



**2016 Chevrolet Camaro SS Non-NPP 6MT  
Blackheart Axle-Back Dual Exhaust System  
70401332-RHKR (w/o Mufflers) & 70401333-RHKR (w/ Mufflers)  
Installation Instructions**



Thank you for making HOOKER HEADERS your choice in a high-performance exhaust system. Extensive dyno/track testing has enabled HOOKER to offer the most advanced design in exhaust systems. The installation, while not complex, will take a certain amount of time. However, the additional horsepower and improved performance will more than justify your efforts. Proper installation and maintenance will ensure long life and maximum performance from your HOOKER HEADER exhaust system.

**BEFORE STARTING:**

Your vehicle must be raised a minimum of 36 inches. A floor hoist is ideal. If no hoist is available, we strongly urge the use of axle stands as a safety measure. Please read these instructions in their entirety before attempting installation.

**CAUTION! WORK ONLY ON A LEVEL SURFACE. USE JACKS /JACK STANDS OF SUFFICIENT CAPACITY TO LIFT AND SUPPORT YOUR VEHICLE. NEVER WORK UNDER A VEHICLE SUPPORTED BY A FLOOR OR BUMPER JACK.**

**INCLUDED HARDWARE:**

P/N	Qty.	Description
556R28	2	Band Clamp, 2.75" x 1.25" Wide, SS Torca
556R23	4	Band Clamp, 3.0" x 1.25" Wide, SS Torca
556R94	2	Decal – Blackheart 4" x 2"

Check the hardware package. If anything is missing, please contact Technical Service at 1-866-464-6553 or 270-781-9741

**INSTALLATION:**

1. Disconnect the negative cable from the vehicle battery.
2. Lift the vehicle and secure on jack stands.
3. From under the vehicle, locate these 2 sections of the OE mid pipe (**Figures 1 & 2**). This section is right before the (x2) front most exhaust hangers after the OE X-pipe.

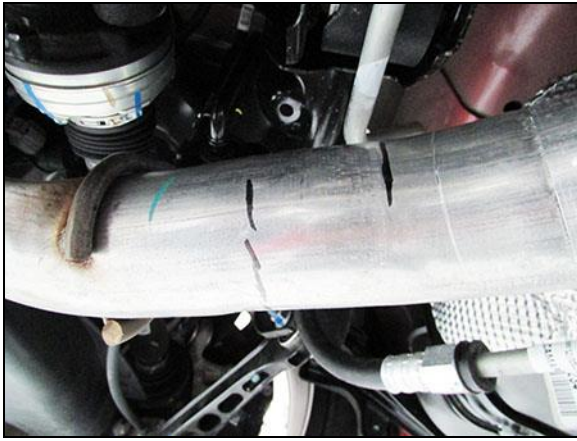


Figure 1 (Left Side)

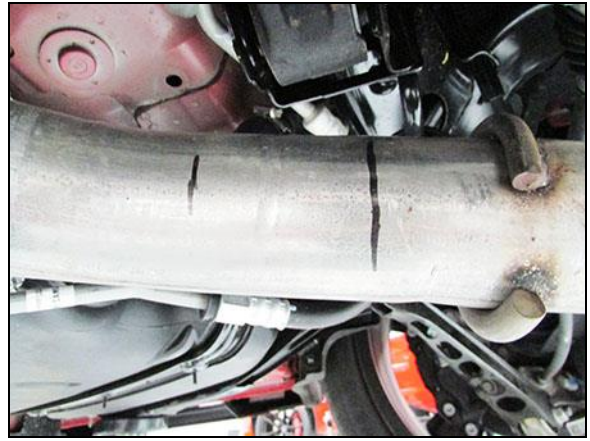


Figure 2 (Right Side)

4. With a permanent marker, locate the tangent line (where the bend ends and the straight section of the pipe begins) of the left side OE mid pipe and mark a straight line. Now mark another straight line exactly 2.0" after your tangent mark (2.0" in the direction of the rear of the vehicle). We suggest using masking tape to wrap around the OE mid pipe to ensure a straight cut. Draw arrows to ensure you cut at the correct side of the marking tape. **DOUBLE CHECK AND MEASURE TWICE BEFORE CUTTING.**

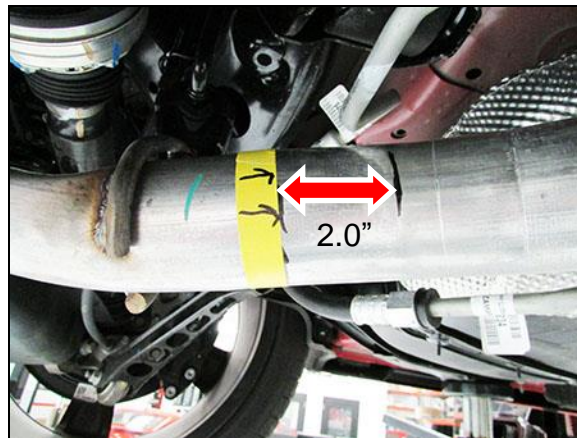


Figure 3

5. With a permanent marker, locate the tangent line (where the bend ends and the straight section of the pipe begins) of the right side OE mid pipe and mark a straight line. Now mark another straight line exactly 2.5" after your tangent mark (2.5" in the direction of the rear of the vehicle). We suggest using masking tape to wrap around the OE mid pipe to ensure a straight cut. Draw arrows to ensure you cut at the correct side of the marking tape. **DOUBLE CHECK AND MEASURE TWICE BEFORE CUTTING.**

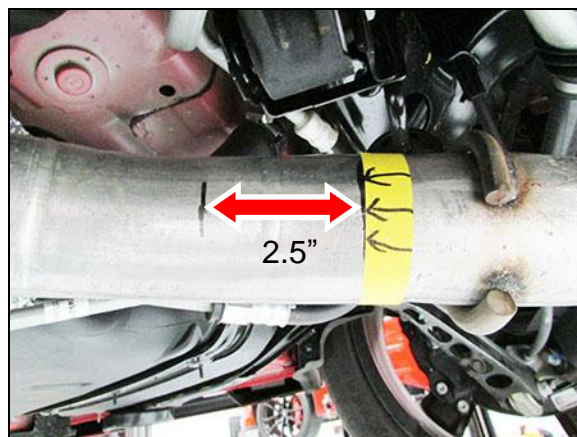


Figure 4

6. When complete, de-burr the inside and outside of the cut tube (BE CAREFUL AS THE CUT ENDS WILL BE VERY SHARP).
7. Remove (x4) 15mm head nuts securing the left and right side rearmost aluminum hanger brackets off the vehicle.
8. Slide the (x4) rubber isolation mounts off the vehicle and then the (x2) aluminum hanger brackets. Remove OE axle-back exhaust.
9. On a workbench, remove the (x4) rubber isolation mounts and then the (x2) aluminum hanger brackets off the OE axle-back exhaust and transfer onto the Blackheart Axle-Back Exhaust System. We recommend transferring the isolation mounts and aluminum brackets one at a time to ensure they go to the appropriate locations.
10. Using (x2) supplied 3.0" band clamps, install the (x2) supplied adapter pipes onto the left and right side Blackheart mid pipes and tighten.
11. Using (x2) 2.75" band clamps, install the left and right side Blackheart mid pipes onto the OE mid pipe and secure the rubber isolation mounts on the vehicle. Do not tighten the band clamps.
12. Using (x1) 3.0" band clamp, install the left side Blackheart muffler or non-muffler section onto the left mid pipe and secure the rubber isolation mounts and aluminum bracket onto the vehicle using (x2) 15mm head nuts removed from step 7. Tighten the (x2) 15mm head nuts. Do not tighten the band clamp
13. Using (x1) 3.0" band clamp, install the right side Blackheart muffler or non-muffler section onto the right mid pipe and secure the rubber isolation mounts and aluminum bracket onto the vehicle using (x2) 15mm head nuts removed from step 7. Tighten the (x2) 15mm head nuts. Do not tighten the band clamp
14. Now align the Blackheart Exhaust System including the left and right side tips to your desired position and tighten the (x6) band clamps from steps, 10, 11, 12 and 13.
15. Connect the battery, start the engine, and check for leaks.
16. Re-check your work.
17. Remove the jack stands and lower the vehicle.
18. After 150 miles, re-check and tighten all bolts and clamps.

**NOTE: It is normal for the Blackheart Exhaust System to emit smoke for the first few minutes during break-in period.**

**LIMITATION OF LIABILITY – DISCLAIMER:**

The regulation of emissions production, noise levels, and safety standards is undertaken by the federal government, each of the fifty state legislatures, and by many local municipalities, towns, and counties.

HOOKER™ makes no warranties of merchantability, of fitness for particular purpose, or that its products are approved for general use, or that its products comply with laws, regulations, or ordinances in the state where they may be sold to the ultimate purchaser, the consumer.

Unless expressly stated to the contrary in the catalog, instruction sheet; or price list, the entire risk as to the conformity of any company product in any such state and as to repair should the product prove to be defective or non-conforming, is on the retail purchaser, the buyer, the ultimate consumer, of such product and it is not upon the seller, distributor, or manufacturer.

In this connection, the retail purchaser, the buyer, the ultimate consumer assumes the burden of the entire cost of any and all necessary service, alterations, or repair.

**THE FOREGOING STATEMENT LIMITS THE LIABILITY OF THE MANUFACTURER.**

California vehicle code, sections 27156 and 38391, prohibits the advertising, offering for sale, or installation of any device, which modifies a vehicle's emission control system, unless exempted, unless otherwise noted. HOOKER™ Headers that have not received an Executive Order (E.O.) exemption from these code sections are not legal for sale or use in California on vehicles originally equipped with catalytic converters, except for racing vehicles, which may never be driven upon a highway. Check with your local authorities to determine if these headers are legal for use in your particular area.

© 2016 Hooker Headers, Inc. All rights reserved.

**199R11024**

**Date: 3-16-16**