



**2016 Chevrolet Camaro SS Non-NPP A8
Blackheart RACE ONLY Complete Exhaust System
705013104RHKR (w/ Mufflers)
Installation Instructions**



Thank you for making HOOKER HEADERS your choice in a high-performance exhaust system. Extensive dyno/track testing has enabled HOOKER to offer the most advanced design in exhaust systems. The installation, while not complex, will take a certain amount of time. However, the additional horsepower and improved performance will more than justify your efforts. Proper installation and maintenance will ensure long life and maximum performance from your HOOKER HEADER exhaust system.

BEFORE STARTING:

IMPORTANT! These kits require the use of an active fuel management disable device to prevent a check engine light!

Your vehicle must be raised a minimum of 36 inches. A floor hoist is ideal. If no hoist is available, we strongly urge the use of axle stands as a safety measure. Please read these instructions in their entirety before attempting installation.

CAUTION! WORK ONLY ON A LEVEL SURFACE. USE JACKS /JACK STANDS OF SUFFICIENT CAPACITY TO LIFT AND SUPPORT YOUR VEHICLE. NEVER WORK UNDER A VEHICLE SUPPORTED BY A FLOOR OR BUMPER JACK.

INCLUDED HARDWARE:

P/N	Qty.	Description
556R22	1	Band Clamp, 2.5" x 1.25" Wide, SS Torca
556R23	6	Band Clamp, 3.0" x 1.25" Wide, SS Torca
217R4	1	Cable Tie, Flame-Retardant 11.5" Long
599R94	2	Decal - Blackheart 4" x 2"

Check the hardware package. If anything is missing, please contact Technical Service at 1-866-464-6553 or 270-781-9741.

INSTALLATION:

1. Disconnect the negative cable from the vehicle battery.
2. Lift the vehicle and secure on jack stands.
3. From under the vehicle, remove (x5) 13mm head bolts securing the center cross brace to the chassis. Set these parts aside as they will be re-used.

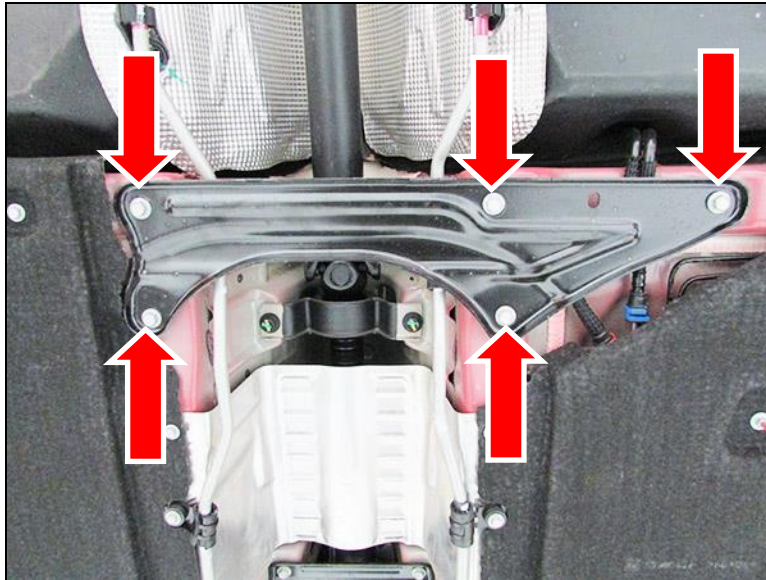


Figure 1

4. Remove the (x6) 8mm head bolts securing the left and right side AFM valve actuators off the OE exhaust.
5. Loosen the left side band clamp securing the OE mid pipe to the left side post catalytic converter. Cut the bracket off the pipe and remove the band clamp and gasket. These parts will not be re-used.

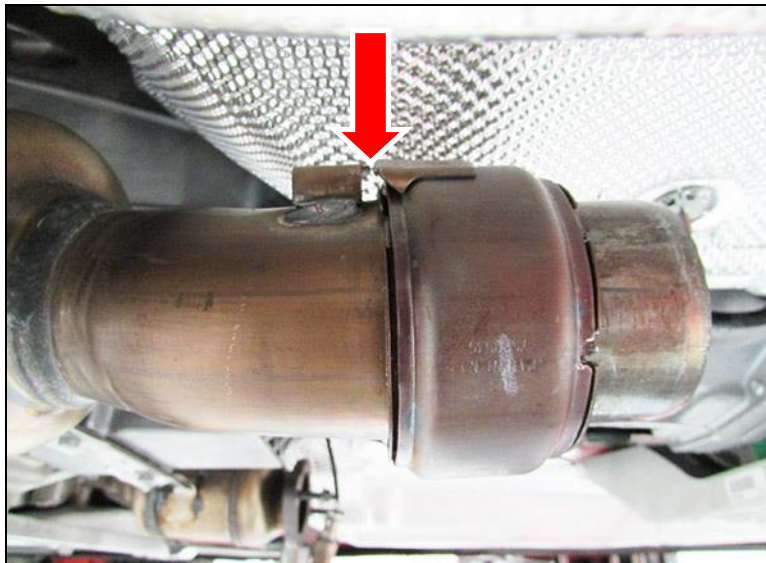


Figure 2

6. Remove the right side post O2 sensor off the OE mid pipe.
7. Remove (x2) 15mm head nuts securing the OE mid pipe to the right side main catalytic converter. Set these nuts and gasket aside as they will be re-used.
8. Remove (x4) 15mm head nuts securing the left and right side rearmost aluminum hanger brackets off the vehicle.
9. Slide the (x4) rubber isolation mounts off the vehicle and then the (x2) aluminum hanger brackets. Remove the OE exhaust.
10. On a workbench, remove the (x4) rubber isolation mounts and then the (x2) aluminum hanger brackets off the OE exhaust and transfer onto the Blackheart Exhaust System. We recommend transferring the isolation mounts and aluminum brackets one at a time to ensure they go to the appropriate locations.
11. Using (x1) supplied 2.5" band clamp, install the Blackheart left side front pipe. Do not tighten the band clamp.

12. Using the original gasket (replace if necessary) and (x2) 15mm head nuts removed from step 7, install the Blackheart right side front pipe. Do not tighten the (x2) nuts.
13. Using (x2) supplied 3.0" band clamps, install the Blackheart X-pipe onto the left and right side Blackheart front pipes. Do not tighten the clamps.
14. Using (x2) 3.0" band clamps, install the left and right side Blackheart axle pipes onto the Blackheart X-pipe and secure the rubber isolation mounts on the vehicle. Do not tighten the band clamps.
15. Using (x1) 3.0" band clamp, install the left side Blackheart tailpipe or muffler section onto the left axle pipe. Secure the rubber isolation mount and aluminum bracket onto the vehicle using (x2) 15mm head nuts removed from step 8. Tighten the (x2) 15mm head nuts but do not tighten the band clamp.
16. Using (x1) 3.0" band clamp, install the right side Blackheart tailpipe or muffler section onto the right axle pipe. Secure the rubber isolation mount and aluminum bracket onto the vehicle using (x2) 15mm head nuts removed from step 8. Tighten the (x2) 15mm head nuts but do not tighten the band clamp.
17. Install the center cross brace removed from step 3 using the original (x5) bolts and tighten.
18. Using the original (x6) bolts removed from step 4, install the left and right side AFM valve actuators onto the valve brackets and tighten.
19. Align the Blackheart Exhaust System including the left and right side tips to your desired position and tighten the (x2) 15mm head nuts from step 12 and then the (x7) band clamps from steps 11, 13, 14, 15, and 16.
20. Using the supplied cable tie, support the left side differential line away from the exhaust tube.

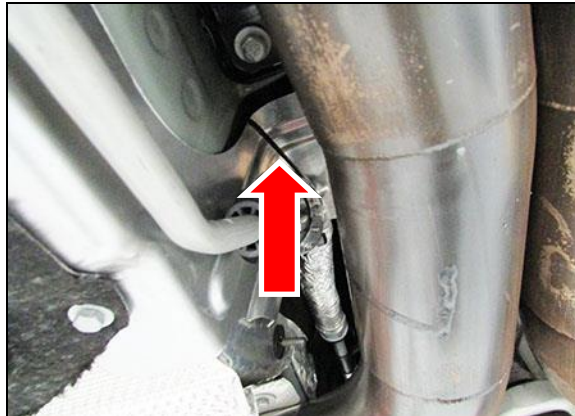


Figure 3

21. Install the right side post O2 sensor and tighten.
22. Connect the battery, start the engine, and check for leaks.
23. Re-check your work.
24. Remove the jack stands and lower the vehicle.
25. After 150 miles, re-check and tighten all bolts and clamps.

NOTE: It is normal for the Blackheart Exhaust System to emit smoke for the first few minutes during break-in period.

LIMITATION OF LIABILITY – DISCLAIMER:

The regulation of emissions production, noise levels, and safety standards is undertaken by the federal government, each of the fifty state legislatures, and by many local municipalities, towns, and counties.

HOKKER™ makes no warranties of merchantability, of fitness for particular purpose, or that its products are approved for general use, or that its products comply with laws, regulations, or ordinances in the state where they may be sold to the ultimate purchaser, the consumer.

Unless expressly stated to the contrary in the catalog, instruction sheet; or price list, the entire risk as to the conformity of any company product in any such state and as to repair should the product prove to be defective or non-conforming, is on the retail purchaser, the buyer, the ultimate consumer, of such product and it is not upon the seller, distributor, or manufacturer.

In this connection, the retail purchaser, the buyer, the ultimate consumer assumes the burden of the entire cost of any and all necessary service, alterations, or repair.

THE FOREGOING STATEMENT LIMITS THE LIABILITY OF THE MANUFACTURER.

California vehicle code, sections 27156 and 38391, prohibits the advertising, offering for sale, or installation of any device, which modifies a vehicle's emission control system, unless exempted, unless otherwise noted. HOKKER™ Headers that have not received an Executive Order (E.O.) exemption from these code sections are not legal for sale or use in California on vehicles originally equipped with catalytic converters, except for racing vehicles, which may never be driven upon a highway. Check with your local authorities to determine if these headers are legal for use in your particular area.

© 2016 Hooker Headers, Inc. All rights reserved.

199R11038

Revision Date: 11-30-17