



**2015-2016 C7 Corvette Z06
Blackheart 3" 304SS Header-Back Exhaust System
70501392-RHKR (w/Dual Mode (NPP) Mufflers, w/o Cats, no/ AFM valves– Race Only**



Installation Instructions

Thank you for making HOOKER HEADERS your choice in a high-performance exhaust system. Extensive dyno/track testing has enabled HOOKER to offer the most advanced design in exhaust systems. The installation, while not complex, will take a certain amount of time. However, the additional horsepower and improved performance will more than justify your efforts. Proper installation and maintenance will ensure long life and maximum performance from your HOOKER BLACKHEART exhaust system.

BEFORE STARTING:

WARNING! This product is not street legal and may only be used on Racing Vehicles. Racing Vehicles must be used exclusively for racing or other forms of competition. Racing vehicles must not be registered and must never be used on the street. It is illegal to install this product on a registered vehicle and use it on the street.

Your vehicle must be raised a minimum of 18 inches. A floor hoist is ideal. If no hoist is available, we strongly urge the use of axle stands as a safety measure. **Please read and understand these instructions and disclaimer in their entirety before attempting installation.**

CAUTION! WORK ONLY ON A LEVEL SURFACE. USE JACKS /JACK STANDS OF SUFFICIENT CAPACITY TO LIFT AND SUPPORT YOUR VEHICLE. NEVER WORK UNDER A VEHICLE SUPPORTED BY A FLOOR OR BUMPER JACK.

INCLUDED HARDWARE:

Accessory Pack Contents:			Parts List:		Tools Needed:
P/N	Qty.	Description	Qty.	Description	
556R23	4	76mm Band Clamps	1	Left Over-Axle Pipe	Spray Lube (WD 40®)
199R11080	1	Instruction Sheet	1	Right Over-Axle Pipe	3/8" Drive Metric Socket Set
505R73	2	1/4-20 x .750 Bolts	1	Left NPP Muffler	12" 3/8 Drive Extension
599R94	2	Blackheart Decals	1	Right NPP Muffler	3/8 Universal
556R27	4	3" Torca Couplers	1	X-Pipe	15mm - 18mm Deep Sockets
			1	Left Link Pipe w/o Cats	1/4" Socket Set w/ 7mm Socket
			1	Right Link Pipe w/o Cats	Small Flat Blade Screwdriver
					6" 3/8 Drive Extension

INSTALLATION:

IMPORTANT: Inspect your accessory pack: BEFORE YOU START!

1. Place the vehicle on flat a surface, set the parking brake, and block the front wheels.
2. Disconnect the battery.
3. Lift the vehicle and support with jack stands.

WARNING! Never support a vehicle with a floor or bumper jack.

REMOVING THE OEM EXHAUST:

NOTE: Removal of the rear bumper fascia is necessary and will require a second person to help with the removal and re-installation.

1. Remove the screws behind the license plate (x2), above the exhaust tips (x2) and bottom of the bumper cover (x5 each side – 10 total).
2. Remove the small plastic mud flap from inside the rear wheel arch.
3. Release the side vents from the bumper cover by pushing the tab locks from inside the wheel well. Be careful not to break the locks.

NOTE: Release the vents from the bumper cover only, the vent insert will stay connected to the fascia.

4. Remove the reflectors by pushing the mounting tabs from the back side of the fascia after the side vents have been released from the bumper cover and all the screws have been removed from the bottom of the fascia and tip box. Be very careful not to break the tabs. Remove the remaining (x2) screws behind the reflectors. See **Figures 1, 2, & 3.**
5. Release the clips on the top edge of fascia from the inside and pull outward and up while holding the tabs on the clips. Be careful not to break the tabs on the clips. Take your time and do one at a time. **NOTE:** Place a small piece of tape on the fascia at the back up camera to prevent the camera from scratching the paint on the fascia as it pulls out.
6. Remove the fascia and place out of the way.



Figure 1

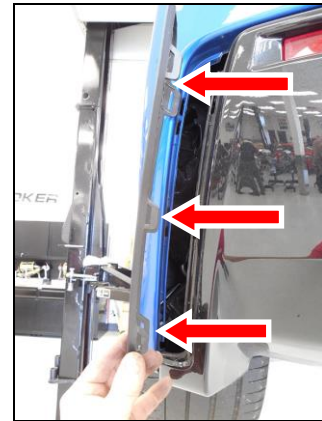


Figure 2

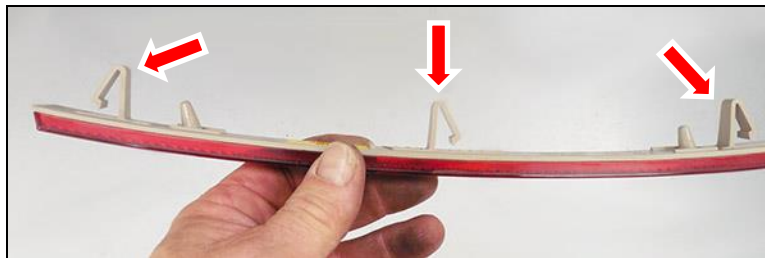


Figure 3

7. Remove the bolts on the lower skid plate and remove.
8. Support the X-pipe and remove the (x4) 15mm nuts at the flanges on the down pipes (**Figure 4**). Loosen the 15mm clamp bolts at the slip joint connecting the X-pipe to the over-axle pipes (**Figure 5**). Remove the (x2) 13mm bolts at the center support hanger on the X-pipe (**Figure 5**). Remove the X-pipe from the over-axle pipes.

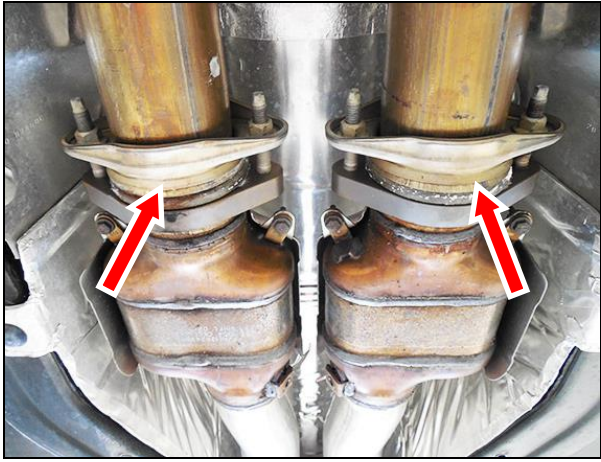


Figure 4

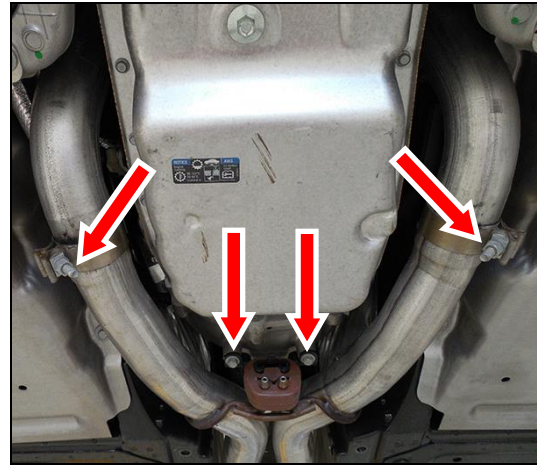


Figure 5

9. Remove the 13mm bolts at each muffler hanger (x2 each). Remove the (x2) 13mm bolts between the mufflers.
10. Unplug the electrical connector at the tips for the exhaust valve actuator.

NOTE: To unlock the connectors, push down on the GREY lock tab and slide the lock backwards away from the valve. Unplug the connector.

NOTE: Automatic transmissions must be placed in neutral for the driver's side over-axle pipe to clear the linkage. Following the procedure to place the vehicle in "service mode" will allow the shifter to be moved from PARK with the engine off. Be sure to shut the ignition off after the shifter is moved from park to prevent the battery from being drained.

11. Remove the left and right muffler assemblies from the vehicle.
12. Remove the exhaust valve actuator from the OEM muffler assemblies by removing the (3) 8mm screws on each valve.

INSTALLATION OF THE BLACKHEART HEADER-BACK EXHAUST:

IMPORTANT: These instructions are for the installation of a HOOKER Blackheart header-back exhaust system that is designed to fit with Hooker Blackheart Headers P/N 70101322-RHKR / 70101324-RHKR. These instructions are for the exhaust system only and assume the headers have already been installed.

NOTE: THE USE OF A TUNER IS REQUIRED TO TURN OFF THE REAR O2 SENSORS WHEN INSTALLING THIS EXHAUST KIT.

1. Install the 76mm band clamps onto each inlet pipe of the Blackheart X-pipe (expanded end with notches). The clamps need to be configured so the threaded stud of the clamp is positioned to align with the cut out in the lower skid plate (**Figure 6**).
2. Install the RIGHT link pipe (long link pipe) into the X-pipe's short expanded end (**Figure 6**). Tighten the clamp to allow for adjustment.
3. Install the LEFT link pipe (short link pipe) into the X-pipe's long expanded end (**Figure 6**). Tighten the clamp to allow for adjustment.
4. Install a 3" coupler onto each header collector (bolts facing the transmission and the nuts facing down).
5. Install the X-pipe into the vehicle and align the link pipe inlet pipes with the header collectors. Slide the coupler from the collector onto the link pipe. Align the coupler for a 50/50 split between the collector and the link pipe. Support the X-pipe by installing the center support bushing on the X-pipe. Install the (x2) 13 mm bolts.
6. Install the 3" TORCA couplers onto the outlet of the X-pipe with the bolts towards the transmission and the nuts facing down (**Figure 6**).

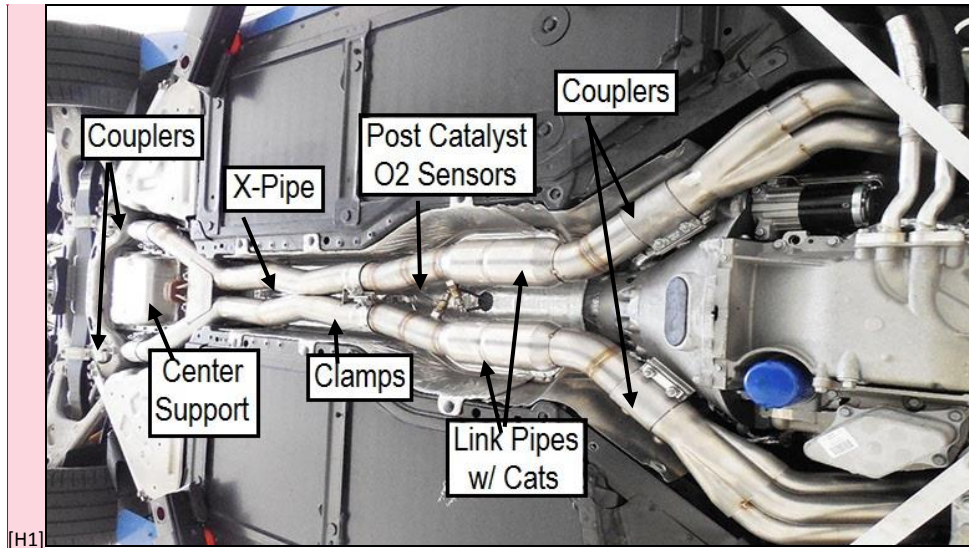


Figure 6

7. Install the left and right over-axle pipes. Install the pipe over the axle and align with the X-pipe. Slide the coupler from the X-pipe onto the over-axle pipe with a 50/50 split on each pipe. Tighten the coupler to allow for adjustment (**Figure 7**).

NOTE: Z06 applications do not use AFM valves (picture is for reference only)!

8. Install the 76mm band clamps onto the inlet pipes of the mufflers. Position the clamp with the bolt on the inside of the pipe and the nut facing down. Tighten the clamps just enough to hold the clamp in place during the installation of the muffler but not compress the slip joint.



Figure 7



Figure 8

9. Remove the muffler hanger isolators from the OEM mufflers and install on to the Blackheart mufflers.
10. Install the exhaust valve actuators onto the Blackheart mufflers. Line up the actuator mounting holes and install the (x3) 8mm screws. Be sure the drive on the actuator is correctly seated into the valve coupler.
11. Install the left (driver's side) muffler first on to the left over-axle pipe. Locate the muffler hangers at the bolt holes and install the (x2) 13mm bolts on the isolator assembly. Plug in and lock the exhaust valve actuator harness connector (**Figure 8**).
12. Install the right (passenger's side) muffler on to the right over-axle pipe. Locate the muffler hangers at the bolt holes and install the (x2) 13mm bolts on the isolator assembly. Plug in and lock the exhaust valve actuator harness connector (**Figure 8**).
13. Adjust the pipes for best clearance and tip alignment with the rear fascia removed. Use a straight edge to align the tips and tighten all hardware starting at the front and working towards the rear. Final tip alignment will be done after the rear fascia is installed.
14. Install the rear fascia in reverse order it was removed.

NOTE: Be sure the two locator tabs on either side of the backup camera go into the slots in the bumper cover and not under them. It will be helpful to lift up on the center of the fascia through the opening in the center of the fascia pushing the tabs up into the slots and under the backup camera. Keep pressure inward as the remainder of the locking tabs are aligned and pressed into place.

15. Install the hardware, reflectors, side vent grates, and license plate.
16. If additional alignment is necessary, loosen the clamps at the X-pipe and the mufflers. Adjust the depth and alignment of the tips by rotating the pipes and moving the mufflers in or out on the tubes as necessary. After the desired alignment is achieved, tighten the logo plate hardware. Tighten the clamps on the X-pipe and muffler.
17. Re-check all hardware, clearances and electrical connections.
18. Install the skid plate. Do not over tighten the bolts. It is easy to damage the threads.
19. Remove the jack stands and lower the car. Connect the battery and remove the wheel blocks.
20. Start the vehicle and check for leaks and loose hardware. Check all hardware again after the first 150 miles of driving.

Enjoy your Blackheart Exhaust!

LIMITATION OF LIABILITY – DISCLAIMER:

The regulation of emissions production, noise levels, and safety standards is undertaken by the federal government, each of the fifty state legislatures, and by many local municipalities, towns, and counties.

HOOKER™ makes no warranties of merchantability, of fitness for particular purpose, or that its products are approved for general use, or that its products comply with laws, regulations, or ordinances in the state where they may be sold to the ultimate purchaser, the consumer.

Unless expressly stated to the contrary in the catalog, instruction sheet; or price list, the entire risk as to the conformity of any company product in any such state and as to repair should the product prove to be defective or non-conforming, is on the retail purchaser, the buyer, the ultimate consumer, of such product and it is not upon the seller, distributor, or manufacturer.

In this connection, the retail purchaser, the buyer, the ultimate consumer assumes the burden of the entire cost of any and all necessary service, alterations, or repair.

THE FOREGOING STATEMENT LIMITS THE LIABILITY OF THE MANUFACTURER.

California vehicle code, sections 27156 and 38391, prohibits the advertising, offering for sale, or installation of any device, which modifies a vehicle's emission control system, unless exempted, unless otherwise noted. HOOKER™ Headers that have not received an Executive Order (E.O.) exemption from these code sections are not legal for sale or use in California on vehicles originally equipped with catalytic converters, except for racing vehicles, which may never be driven upon a highway. Check with your local authorities to determine if these headers are legal for use in your particular area.

Technical Support: 1-866-464-6553

© 2016 Hooker Headers, Inc. All rights reserved.

199R11080

Date: 5-13-16