



1988-1998 GM K1500 (4WD) SCSB TRUCK EXHAUST SYSTEMS

P/N: BH14348

Installation Instructions

Muffler Hangers



Front



Rear

Tailpipe Hangers



Left



Right

Thank you for choosing to install a Hooker Blackheart exhaust system on your 1988-1998 GM 4WD SCSB truck. These systems have been specifically developed for direct compatibility with other Hooker Blackheart LS/LT swap components for this application.

PRE-INSTALLATION CHECK:

Check that the hardware package includes the following:

BH14348 (2.5" dual exit)	
Qty.	Description
1	Front Muffler Hanger Bracket
1	Rear Muffler Hanger Bracket
1	Right Tailpipe Hanger Bracket
1	Left Tailpipe Hanger Bracket
4	Rubber Isolators
12	Isolator Retainers
9	2.5" Band Clamps
4	M10 Bolts
4	M10 Nuts
2	M12 Bolts
2	M12 Nuts
1	5/16" x 1" Sheet Metal Screw

If any listed hardware is missing, please contact Technical Service at: 1-866-464-6553 or 270-781-9741.

IMPORTANT! Position and support your vehicle on a suitable surface. **USE CAUTION AND WORK ONLY ON A LEVEL SURFACE USING JACKS AND JACK STANDS OF SUFFICIENT CAPACITY TO LIFT AND SUPPORT YOUR VEHICLE. NEVER WORK UNDER A VEHICLE SUPPORTED BY A FLOOR OR BUMPER JACK.** Use of a two-post under arm lift or four-post drive-on lift will considerably reduce the time and effort required to complete the installation. **MAKE SURE LIFT LOCKS ARE ENGAGED BEFORE WORKING UNDER THE VEHICLE.**

INSTALLATION:

1. Remove all existing exhaust system components from the vehicle, including any stock or previously added hangers that are attached to the frame of the truck.
2. Using the supplied M12 bolts and nuts, attach the supplied front muffler hanger bracket onto the right side frame rail in place of the factory hanger that was removed from this location. Refer to **Image 1** below for the proper installed orientation of the bracket.



Front muffler bracket attached to right side frame rail.

Image 1

- Using two of the supplied M10 bolts and nuts, attach the supplied rear muffler hanger bracket onto the frame crossmember in place of the factory hanger that was removed from this location. Later model truck frames only use a single threaded attachment hole for this hanger. In such cases, use the supplied the 5/16" sheet metal screw and one of the supplied M10 bolts to attach the bracket. The frame will need to be marked and drilled to accept the 5/16" screw. Refer to **Image 2** below for the proper installed location and orientation of the bracket.

Later model year trucks have a factory hanger that is attached with a single bolt. You will re-use the removed factory bolt in the upper left hole in the bracket and drill/install the supplied 5/16" screw in the lower small hole here

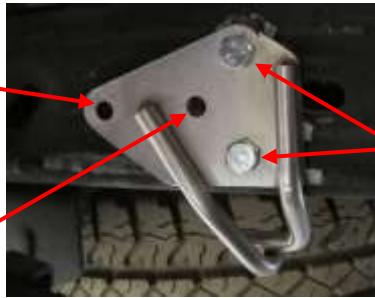


Early-to-mid model year trucks have a factory hanger that is attached to the frame with two bolts. You will re-use the removed factory bolts in both of the upper holes here to attach the supplied bracket. The supplied 5/16" screw will not be used.

Image 2

- Using two of the supplied M10 bolts and nuts, attach the supplied right-side tailpipe hanger bracket onto the right-side frame rail in place of the factory hanger that was removed from this location. The two horizontally aligned holes will be used for this purpose on 1988-93 truck frames and the two vertically aligned holes will be used on 1994-98 truck frames. Refer to **Image 3** below for the proper installed location and orientation of the bracket.

1988-1993 model year trucks will use these two horizontally-aligned holes to attach the right-side tailpipe hanger bracket to the frame rail in place of the removed factory hanger bracket



1994-1998 model year trucks will use these two vertically-aligned holes to attach the supplied right-side tailpipe hanger bracket to the frame rail in place of the removed factory hanger bracket

Image 3

- For installation of dual-exit systems only, use the remaining two M10 bolts and nuts and attach the supplied left side tailpipe hanger bracket onto the left side frame rail in the same manner and location used to attach the right-side tailpipe hanger bracket. Refer to **Image 4** below for the proper installed location and orientation of the bracket.

1994-1998 model year trucks will use these two vertically-aligned holes to attach the supplied right-side tailpipe hanger bracket to the frame rail in place of the removed factory hanger bracket



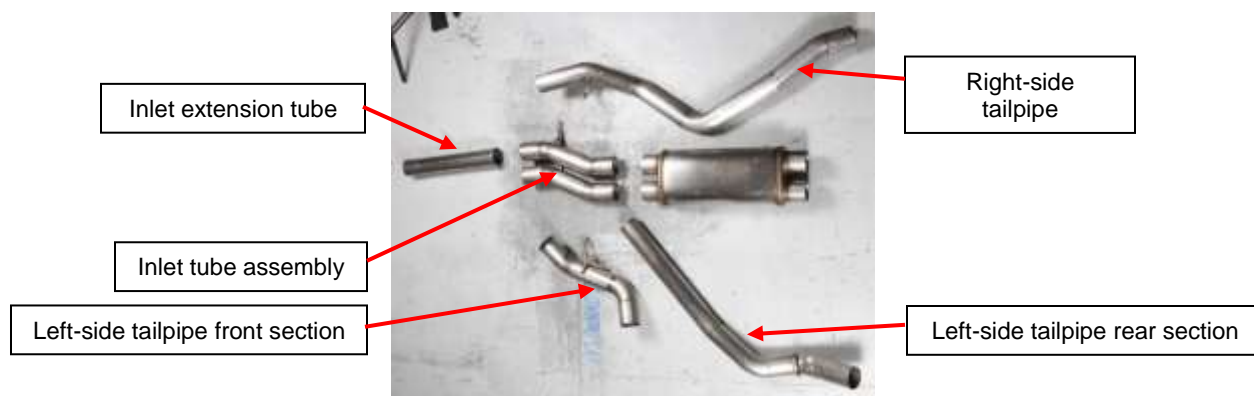
1988-1993 model year trucks will use these two horizontally-aligned holes to attach the right-side tailpipe hanger bracket to the frame rail in place of the removed factory hanger bracket

Image 4

- Install a supplied rubber isolator onto each of the hanger brackets just installed and install a supplied retainer ring 3/8" past their ends.
- Engage the hanger rods on the tailpipe with their corresponding rubber isolators on the truck and install a supplied retaining ring onto each of them.
- Place the remaining supplied 3" clamp over the expanded end of the tip and install the tip onto the tailpipe outlet.
- Adjust all the components to achieve best fitment and tighten all the band clamps just enough to hold the position of all the system components in place.
- Fabricate/install the mid-pipes needed to connect the system to your forward exhaust components and then adjust the system a final time before tightening all the clamps fully.

11. Place a supplied 2.5" over both expanded ends of the inlet tube assembly and insert the two straight inlet tube extensions into them (see system component reference photo below).
12. Place a supplied band clamp over each muffler inlet stub and install the muffler inlet tube assembly with attached extension tubes into the muffler inlets. Feed the inlet tube/muffler assembly over the top of the suspension torsion bar crossmember and insert the hanger rod on the inlet tube assembly into the isolator attached to the forward muffler hanger bracket. Level the muffler and temporarily support it with a stand. Now install a supplied isolator retaining ring onto the inlet tube assembly hanger rod and push it 3/8" past its end.
13. Place a supplied band clamp over the muffler outlet stub closest to the right-side frame rail, then feed the right-side tailpipe (the tube with five bends) over the axle and install the inlet end (the end of the tube with the shorter straight section) into the muffler outlet. Engage the tailpipe hanger rod with its corresponding rubber isolator. Now install a supplied isolator retaining ring onto the hanger rod and push it 3/8" past its end.
14. Place a supplied band clamp over the remaining muffler outlet and install the front section (the remaining tube with two bends) of the left side tailpipe into the muffler outlet. Now insert the hanger rod on the tailpipe into its corresponding rubber isolator and install a supplied isolator retainer onto the hanger rod and push it 3/8" past its end.
15. Place a supplied clamp over the expanded outlet end of the left-side tailpipe front section and install the long straight end of the rear section of the left side tailpipe into it. Now insert the hanger rod on the tailpipe into its corresponding rubber isolator and install a supplied isolator retainer onto the hanger rod and push it 3/8" past its end.
16. Place a supplied clamp over the expanded ends of the tips and install them both onto the tailpipe outlets and adjust all the system components to achieve the best fitment while tightening all the band clamps just enough to hold the position of all the system components in place.
17. Install/fabricate the mid-pipes needed to connect the system to your forward exhaust components and then adjust the system a final time before tightening all the clamps fully.

BH14348 dual-exit systems component reference photo



COMPATIBILITY INFORMATION:

These exhaust systems were designed for direct compatibility with Hooker Blackheart LS/LT swap exhaust manifolds and engine mounting brackets listed for this vehicle application. If needed, additional compatible LS engine swap components, such as EFI fuel control systems, fuel filters, fuel pumps, plumbing hose/fittings, valve covers and accessory drive brackets can be found at www.holley.com.

The bend geometries of these exhaust systems are designed to assist the user in carrying out an emissions-legal LS engine change using an CARB/EPA-allowable engine/transmission from a 1999-2006 Chevy Silverado 1500 donor truck. As part of such installations, the catalytic converters from the donor truck must be installed within the parameters stated within official CARB/EPA documents regarding legal engine changes. With that completed, custom connector tubes can be fabricated to connect the converters, rearward of the final catalyst monitoring device (i.e. the rear O2 sensors), to the Hooker Blackheart exhaust system also installed on the vehicle.

These Hooker exhaust systems are compatible with driveshafts up to 3.5" in diameter, a stock size spare tire mounted in its original location and most aftermarket trailer hitches. Compatibility with many 3"-4" suspension lifts available for these trucks has been accounted for in the tube bend geometry of these exhaust systems; some suspension lifts may require custom modifications be performed to any of the components in this kit

LIMITATION OF LIABILITY – DISCLAIMER:

The regulation of emissions production, noise levels, and safety standards is undertaken by the federal government, each of the fifty state legislatures, and by many local municipalities, towns, and counties.

HOKKER™ makes no warranties of merchantability, of fitness for particular purpose, or that its products are approved for general use, or that its products comply with laws, regulations, or ordinances in the state where they may be sold to the ultimate purchaser, the consumer.

Unless expressly stated to the contrary in the catalog, instruction sheet; or price list, the entire risk as to the conformity of any company product in any such state and as to repair should the product prove to be defective or non-conforming, is on the retail purchaser, the buyer, the ultimate consumer, of such product and it is not upon the seller, distributor, or manufacturer.

In this connection, the retail purchaser, the buyer, the ultimate consumer assumes the burden of the entire cost of any and all necessary service, alterations, or repair.

THE FOREGOING STATEMENT LIMITS THE LIABILITY OF THE MANUFACTURER.

California vehicle code, sections 27156 and 38391, prohibits the advertising, offering for sale, or installation of any device, which modifies a vehicle's emission control system, unless exempted, unless otherwise noted. HOKKER™ Headers that have not received an Executive Order (E.O.) exemption from these code sections are not legal for sale or use in California on vehicles originally equipped with catalytic converters, except for racing vehicles, which may never be driven upon a highway. Check with your local authorities to determine if these headers are legal for use in your particular area.

Technical Service: 1-866-464-6553

Phone: 1-270-781-9741

For online help, please refer to the Tech Service section of our website: www.holley.com

© 2022 Holley Performance Products, Inc. All rights reserved. Tous Droits Réservés.

199R12250

Revision Date: 7-29-23