



## Installation Instructions

# 817739

**2015-22 DODGE CHALLENGER HELLCAT,  
SRT 392, R/T SCAT PACK  
6.2L & 6.4L ENGINE  
2017-22 5.7L ENGINE**

### OVERVIEW:

1. Take a moment to read and understand these instructions before installing your Flowmaster performance system.

**NOTE:** Please inventory all parts now before continuing and if necessary, report any missing items to our tech line. This will avoid potentially stranding your vehicle until any missing replacement parts arrive.

ITM #	PART #	DESCRIPTION	QTY.
1	26522S	Scavenger Pipe Assembly	1
2	26526S	Left Tailpipe	1
3	26527S	Right Tailpipe	1
4	853046-394	Muffler	2
N/A	PK799	Hardware Package includes:	1
5	MC234BS	2¾" Stainless Band Clamp	2
6	MC300BS	3" Stainless Band Clamp	6

ITM #	PART #	DESCRIPTION	QTY.
7	HW502	7/16" Hanger Keeper	2
8	HW512	10-32 x ½" Standoff	6
9	HW514	10-32 x ¾" Standoff	6
10	HW240	#10-32 x ¾" Screw	6
11	HW241	#10-32 x ¾" Screw	6
12	HW315	#10 Flat Washer	18
N/A	PK1051	5.7L Adapter Pack includes:	1
13	TB933S	2½ - 3" Adapter	2
14	MC250BS	2½" Stainless Band Clamp	2

### PREPARE VEHICLE FOR KIT INSTALLATION:

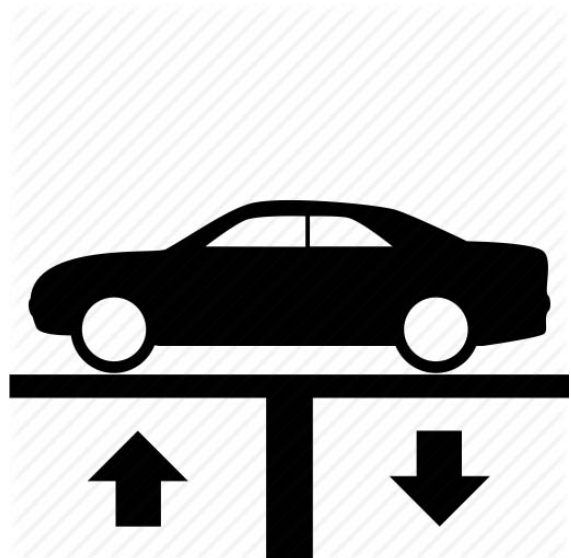
2. Raise vehicle up on a hoist or rack to working height. If you don't have access to a hoist or rack, support vehicle with jack stands.

#### WARNING:

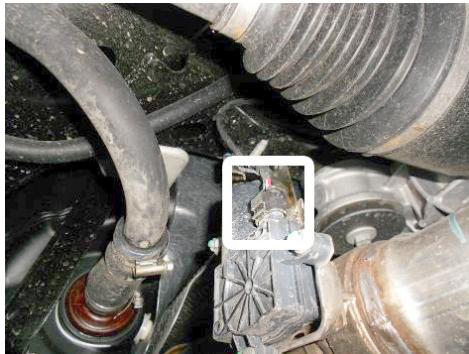
Avoid serious burns! Allow your vehicle time to cool completely before touching any factory engine components.

#### To ease preparation and installation of your new kit:

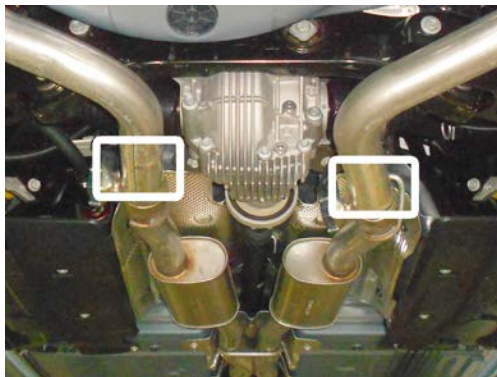
- Apply penetrating lubricant to mounts, bolts and clamps before you remove them.
- Use stands as necessary to support parts as you detach them from your vehicle and again as you install new parts.



3. Unplug wires from both actuators on exhaust system, then unbolt rear wire hanger mounts.



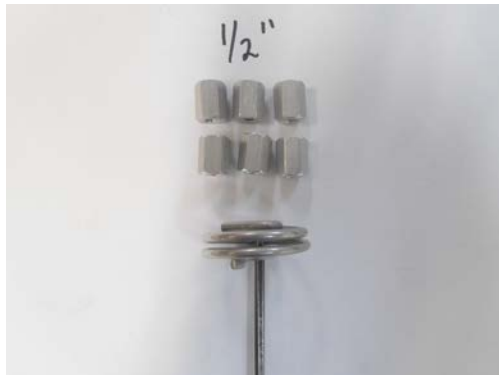
4. Slide front wire hangers out of isolators, loosen clamps behind catalytic converters then carefully remove exhaust system completely from vehicle.



5. Remove (x3 ea.) nuts securing actuators to mounts on tailpipes. Remove actuator and spring from mount on each tailpipe.



6. To install this kit properly, use standoffs sized to your vehicles' actuator valve springs (pictured below).



### INSTALL FLOWMASTER EXHAUST SYSTEM:

7. Remove nuts from stock and Flowmaster clamps, apply anti-seize compound to bolts and re-install nuts. Transfer isolators (removed step 3) from factory exhaust system to tailpipes.

**NOTE:** The image in this step is intended for illustrative purposes only and may or may not accurately reflect components included in your kit.

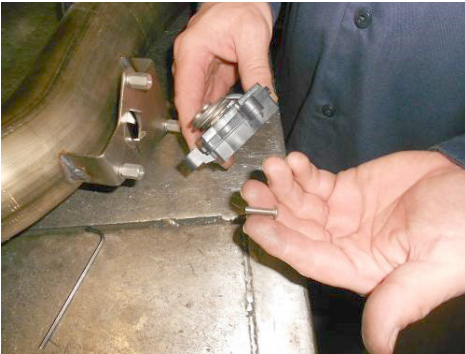


8. Complete step for all bracket holes in both tailpipes: hand-tighten **screw (11)** through tailpipe bracket, (x2) **flat washers (12)** and **standoff (8 or 9)**.





9. Complete step on both actuators and tailpipes: Place actuator on mount, with spring oriented between tabs then loosely attach it using (x3 ea.) **screw (10)** and **flat washer (12)**.



10. Complete step on both actuators and tailpipes: Ensure center arm of actuator spring sets between top and bottom mount tabs, then tighten (x3) screws securely.



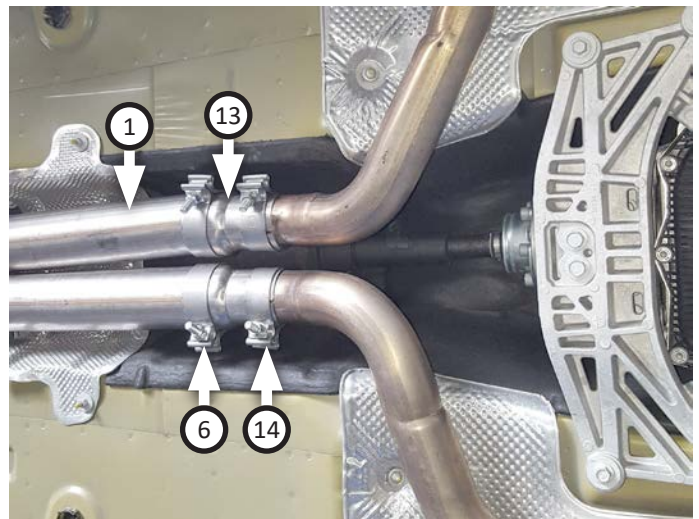
11. Locate (x2) factory exhaust mounts, just forward of rear differential: Remove bolts securing hanger, lift it slightly to clear locating slot and rotate it 180°. Lower hanger back into locating slot and reinstall bolt securely.



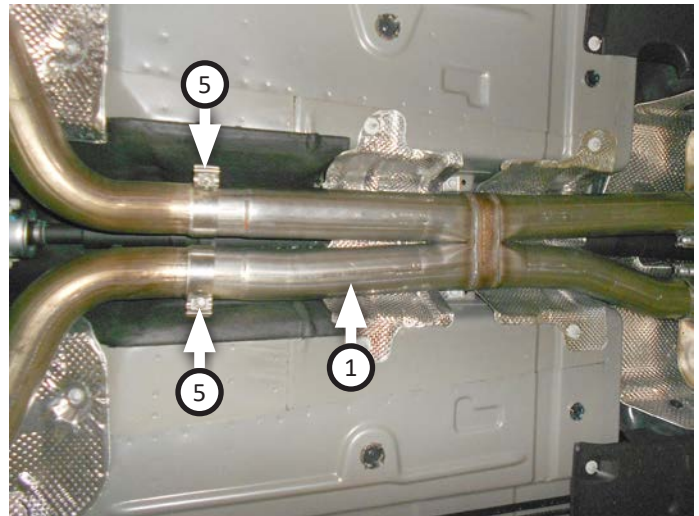
**WARNING:**

Complete this step **ONLY** to adapt kit for 2017-22 model year vehicles with 5.7L engine. Otherwise, skip to step 10.

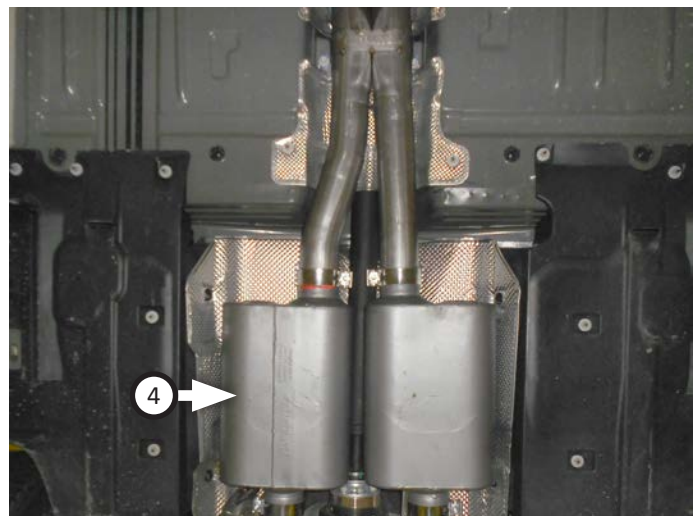
12. Trim off reduction end of **scavenger pipe (1)** then fit both **adapters (13)** onto it with two **clamps (6)**. Fasten assembly onto factory head pipes with two **clamps (14)** (offset outlet pipe oriented to passenger side).



13. Place (x2) **clamps (5)** onto **scavenger pipe (1)** inlets then connect it to head pipes with offset outlet pipe oriented to passenger side). Level and center assembly in drive line tunnel then tighten clamps enough to hold parts.



14. Place (x2 ea.) **clamps (6)** onto **mufflers (4)** then connect them to scavenger pipe. Tighten clamps enough to allow for later adjustment then place (x2) **clamps (4)** onto muffler outlets.

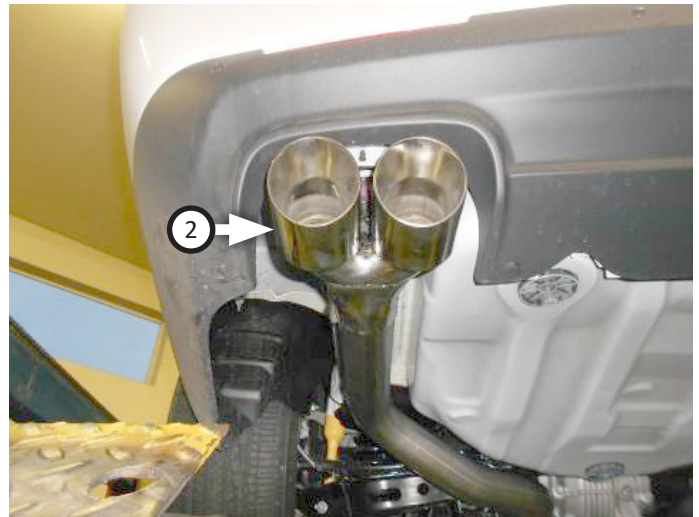




**NOTE:** Complete this step for **right tailpipe (3)** as well.

15. Hang **left tailpipe (2)** wire hangers into rubber isolators then fasten mounts to frame. Connect tailpipe to muffler and adjust until stainless tip is level and centered in bumper cut-out. Tighten clamp just enough to allow for later adjustment.

**NOTE:** The middle hanger on SRT 392 models will not be used and can be removed.



16. Reconnect both actuators (disconnected step 3) on new Flowmaster tailpipes.
17. Adjust exhaust components for fit; maintaining ½" clearance and compensating for suspension, travel and vibration, then tighten all clamps. Reconnect grounding clip to rear hanger on right tailpipe then fit (x2) **hanger keepers (7)** onto each sideways hanger.
18. Recommended: Secure slip-fit connections with a 1-inch tack weld then spray high-temp paint over each weld to prevent rust and premature corrosion.



Congratulations, the installation of your FLOWMASTER performance exhaust system is now complete!





## Installation Diagram

# 817739

2015-22 DODGE CHALLENGER HELLCAT,  
SRT 392, R/T SCAT PACK  
6.2L & 6.4L ENGINE  
2017-22 5.7L ENGINE

