



## QFT™ 400 FUEL PUMP REBUILD KIT P/N 30-7302

1. Remove (5) assembly fasteners, mounting bracket, lower wear plate, rotor, o-ring, eccentric bushing, upper wear plate, and bypass valve assembly.
2. Disassemble the bypass valve and examine for debris and smooth movement of the piston.
3. Replace the internal and external o-rings.
4. Place the new upper wear plate in the pump body positioned around the existing alignment pin.
5. Install the eccentric bushing to position on the same alignment pin and against the upper wear plate.
6. Install the rotor on the shaft with the counter bore facing out.
7. Install the vanes into each slot in the rotor.
8. Install the new o-ring.
9. Position the new lower wear plate and torque the (3) screws to 20 -30 in./lbs.
10. Position the mounting bracket and torque (2) bolts with lockwashers to 90-125 in./lbs.

### 30-7307 (QFT™ 400 Body Kit) INSTALLATION:

1. Remove (2) motor screws and slide motor out. **CAUTION! HOLD MOTOR END CAPS AGAINST MOTOR HOUSING DURING AND AFTER SEPARATION.**
2. Carefully insert motor shaft through new fuel pump body assembly.
3. Torque the (2) screws to 15-20 in./lbs.

ITEM	QTY	PART DESCRIPTION	TORQ. SPECS
1	1	PUMP MOTOR	
2	1	UPPER VALVE BODY	
3*	1	O-RING (2-018)	
4	1	POPPET SPRING	
5	1	POPPET	
6	1	HEX NUT	40-60 IN./LBS.
7	1	LOWER VALVE BODY	40-60 IN./LBS.
8*	1	O-RING (3-908)	
9	1	400 GPH FUEL PUMP BODY	
10	2	1/8 PIPE PLUG W/ SEALANT	20-30 IN./LBS.
11	1	3/32 X 5/8 ROLL PIN (SS)	
12*	1	PUMP HOUSING SHAFT SEAL	
13*	1	UPPER WEAR PLATE	
14*	1	ECCENTRIC BUSHING	
15*	1	O-RING (2-033)	
16*	1	ROTOR	
17*	6	VANE	
18*	1	LOWER WEAR PLATE	
19	3	1/4-20 UNC X .75 HHCS	40-60 IN./LBS.
20	1	PUMP MOUNTING BRACKET	
21	2	5/16-18 X 1.0 HEX HEAD BOLT	40-60 IN./LBS.
22	2	5/16 SPLIT LOCKWASHER (ZINC)	
23	1	1/4" LOCKWASHER (SS)	
24	4	1/8" BALL BEARING	
25	2	-10 RED PLASTIC PLUG	
26	1	-8 RED PLASTIC CAP	

\* COMPONENTS IN THIS KIT

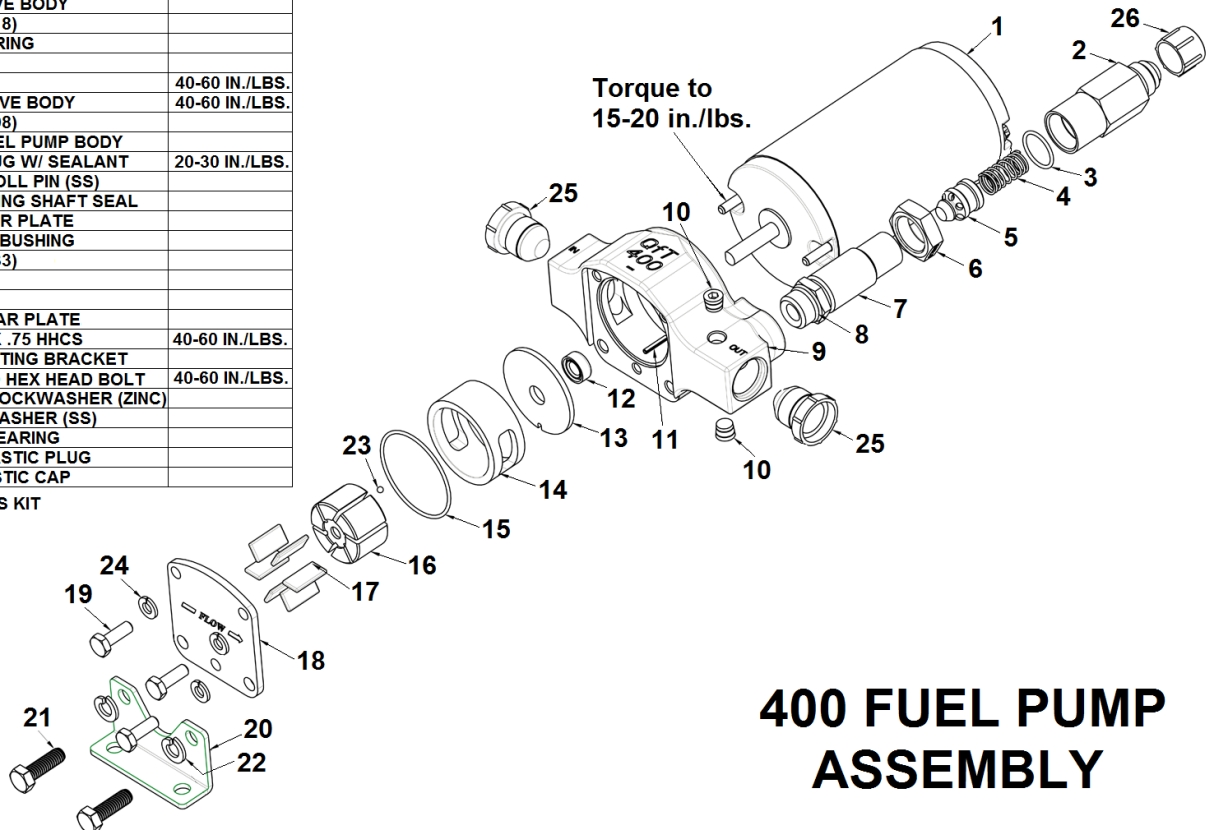


Figure 1

Quick Fuel Technical Support: 1-270-793-0900  
For warranty information, please see our website at [www.quickfueltechnology.com](http://www.quickfueltechnology.com).

99-30-7302

Revision Date: 10-2-13