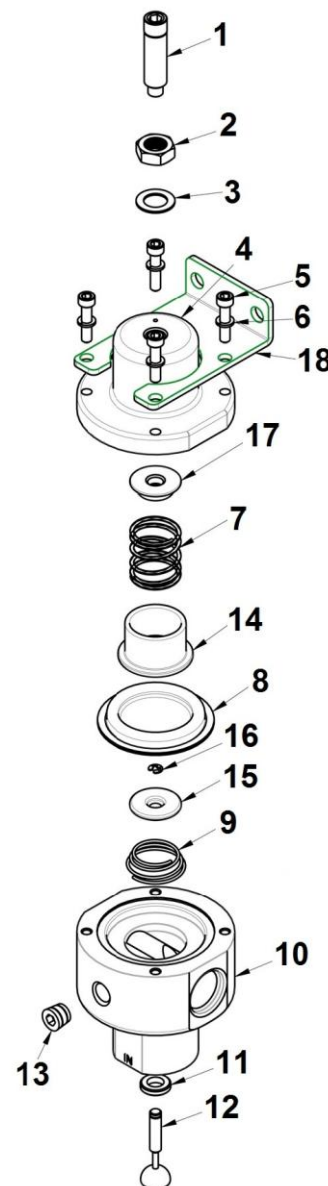




30-7304 – 2-PORT REGULATOR REBUILD KIT

ITEM	QTY	DESCRIPTION	TORQUE SPECS
1	1	REGULATOR ADJUSTING SCREW	
2	1	3/8-24UNF-2B HEX JAM NUT	40-60 IN/LBS
3	1	3/8 FLAT WASHER	
4	1	2 PORT REGULATOR CAP	
5	4	#8-32 UNC-2A X 3/4 SHCS	12-18 IN/LBS
6	4	#8 SPLIT LOCK WASHER	
7	1	REGULATOR SPRING	
8	1	2 PORT DIAPHRAGM	
9	1	LOWER REGULATOR SPRING	
10	1	2 PORT REGULATOR BODY	
11	1	2 PORT REGULATOR SEAT	
12	1	2 PORT REGULATOR VALVE STEM	
13	1	1/8 HEX SOCKET PIPE PLUG	20-30 IN/LBS
14	1	REGULATOR SPRING CUP	
15	1	VALVE STEM HOLDER	
16	1	TRUARC RETAINER	
17	1	SPRING RETAINER	
18	1	REGULATOR BRACKET	

1. Remove 4 assembly screws (5). Set aside for reuse.
2. Remove cap (4), bracket (18) and retainer (17). Set aside for reuse.
3. Remove diaphragm spring (7) and discard.
4. Remove spring cup (14). Set aside for reuse.
5. Depress valve stem retainer (15) to expose retainer (16). Then remove and discard.
6. Remove lower spring (9) and discard.
7. Replace lower spring (9) and install with new retainer (16).
8. Position new diaphragm (8). **Make certain that the molded diaphragm loop is pointing up, towards the cap.**
9. Assemble the new spring (7) and retainer (17).
10. Torque the 4 assembly screws (5) to 12 – 18 in./lbs.
11. Loosen nut (2) and readjust screw (1) as necessary to achieve correct fuel pressure on engine.
12. Then torque nut (2) to 40 - 60 in./lbs.



For warranty information, please see our website at www.quickfueltechnology.com.

For further questions, please contact our technical department at 1-270-793-0900.

99-30-7304

Revision Date: 12-17-13



30-7304 – 4-PORT REGULATOR REBUILD KIT

ITEM	QTY	DESCRIPTION	TORQUE SPECS
1	4	#10-24UNC x 3/4 S/S SHCS	20-30 IN/LBS
2	4	#10 SPLIT LOCKWASHER	
3	1	4 PORT REGULATOR BRACKET	
4	1	REGULATOR ADJUSTING SCREW	
5	1	3/8-24UNF-2B HEX JAM NUT	40-60 IN/LBS
6	1	3/8 FLAT WASHER	
7	1	4 PORT REGULATOR CAP	
8	1	REGULATOR SPRING	
9	1	REGULATOR SPRING CUP	
10	1	4 PORT DIAPHRAGM	
11	1	LOWER REGULATOR SPRING	
12	1	4 PORT REGULATOR SEAT	
13	1	4 PORT REGULATOR VALVE STEM	
14	1	4 PORT REGULATOR BODY	
15	1	VALVE STEM HOLDER	
16	1	TRUARC RETAINER	
17	1	-10 TO -8 FITTING	40-60 IN/LBS
18	1	-8 O-RING	
19	1	4 PORT BALL STUD GUIDE	40-60 IN/LBS
20	1	1/8 HEX SOCKET PIPE PLUG	20-30 IN/LBS
21	1	SPRING RETAINER	
22	1	O-RING	

1. Remove 4 assembly screws (1). Set aside for reuse.
2. Remove cap assembly (7), bracket (3) and retainer (21). Set aside for reuse.
3. Remove diaphragm spring (8), diaphragm (10) and discard.
4. Remove spring cup (9). Set aside for reuse.
5. Position new diaphragm (10). **Make certain that the molded diaphragm loop is pointing up, towards the cap.**
6. Remove o-ring (22) from fitting (17) and replace with o-ring supplied as necessary. Torque to 40 – 60 in./lbs.
7. Remove o-ring (18) from fitting (19) and replace with o-ring supplied as necessary. Torque to 40 – 60 in./lbs.
8. Assemble the new spring (8) and retainer (21).
9. Torque the 4 assembly screws (1) to 20 – 30 in./lbs.
10. Loosen nut (5) and readjust screw (4) as necessary to achieve correct fuel pressure on engine
11. Then torque nut (5) to 40 – 60 in./lbs.

For warranty information, please see our website at www.quickfueltechnology.com.

For further questions, please contact our technical department at 1-270-793-0900.

99-30-7304

Revision Date: 12-17-13

