



1973-87 GM C10 SHORT BED TRUCK EXHAUST SYSTEMS

DUAL SIDE EXIT TAILPIPES BEHIND THE REAR TIRES
304SS – 70501314-RHKR (2.5") & 70501315-RHKR (3.0")
409SS – 70501414-RHKR (2.5") & 70501415-RHKR (3.0")

Installation Instructions

Compatible with standard-duty rear leaf springs only (52" length), cannot be installed on trucks equipped with factory heavy-duty rear leaf spring option (56" length).



Thank you for choosing to install a HOOKER™ exhaust system on your 1973-87 GM short bed truck. Although these systems have been specifically developed for direct fitment with HOOKER™ LS swap components for this application, they will provide equally beneficial fitment, function and service life with other non-Hooker LS swap headers or non-LS engine equipped 73-87 GM short bed trucks through modification of the system inlet tubes, or construction of new ones, by a competent fabricator (use of custom double-hump crossmember may be required). Installation of these systems are 50-state legal only on 1975-prior year model vehicles not factory equipped with catalytic converters.

PRE-INSTALLATION CONSIDERATIONS:

Check that the hardware package includes the following:

70501314-RHKR & 70501414-RHKR (2.5")		70501315-RHKR & 70501415-RHKR (3")	
Qty.	Description	Qty.	Description
2	2.5" Torca couplers	2	3.0" Torca couplers
8	2.5" Torca band clamps	8	3.0" Torca band clamps
1	Left side aft-muffler hanger	1	Left side aft-muffler hanger
1	Right side aft-muffler hanger	1	Right side aft-muffler hanger
1	Left side tailpipe hanger	1	Left side tailpipe hanger
1	Right side tailpipe hanger	1	Right side tailpipe hanger
4	Rubber hanger isolators	4	Rubber hanger isolators
6	3/8 x 1" bolts	6	3/8 x 1" bolts
6	3/8 flanged nuts	6	3/8 flanged nuts
2	1/4" x 3/4" bolts	2	1/4" x 3/4" bolts
2	1/4" nuts	2	1/4" nuts

If any listed hardware is missing, please contact Technical Service at: 1-866-464-6553 or 270-781-9741.

IMPORTANT! Position and support your vehicle on a suitable surface. **USE CAUTION AND WORK ONLY ON A LEVEL SURFACE USING JACKS AND JACKSTANDS OF SUFFICIENT CAPACITY TO LIFT AND SUPPORT YOUR VEHICLE. NEVER WORK UNDER A VEHICLE SUPPORTED BY A FLOOR OR BUMPER JACK.** Use of a two-post under arm lift or four-post drive-on lift will considerably reduce the time and effort required to complete the installation. **MAKE SURE LIFT LOCKS ARE ENGAGED BEFORE WORKING UNDER THE VEHICLE.**

Multiple rear hanger locations/types were used by GM in the construction of these trucks within the same model year range. As such, removal (i.e. grinding and/or cutting) of the stock riveted rear hanger brackets on your truck may be required to permit installation of the rear hangers included with this exhaust system as intended.

INSTALLATION:

NOTE: The following steps assume that you are installing the system using HOOKER™ LS swap mounting components and long-tube headers or mid-length headers already in place on the vehicle. If you are performing an installation of this system without utilizing these products, install all system components from the “X” crossover rearward and align them for best fitment and clearance before fabricating custom system inlet tubes that are compatible with the geometry of your headers and transmission crossmember.

1. Remove all existing exhaust system components from the vehicle, including any stock or previously added hangers along the entire length of the exhaust system.
2. Place the supplied long exhaust coupler clamps over the header collectors.
3. Place a supplied band clamp over each X-pipe inlet and insert the system inlet tubes into the inlets.
4. Position the X-pipe assembly behind the header collectors (X-pipe outlet legs running upward) and position the coupler clamps over the connections before tightening them enough to hold the basic position of the X-pipe. Ensure the gaps between the collectors and X-pipe inlet legs are centered in the middle of the coupler clamps for proper clamp functionality.
5. Place a supplied band clamp over the offset inlet of each muffler and install the mufflers onto the X-pipe outlet legs before tightening the clamps sufficiently enough to hold the basic component positions, but still allow adjustment.
6. Place a supplied band clamp over the muffler outlets.
7. Attach the left and right side aft-muffler hanger brackets to the bottom of the frame crossmember that spans between the front leaf spring perches, as shown in **Figure 1**. Use the included 3/8 x 1” bolts and nuts for this purpose. When correctly installed, the hanger rods will be oriented towards the rear of the vehicle and the barbed ends will point inward towards each other.

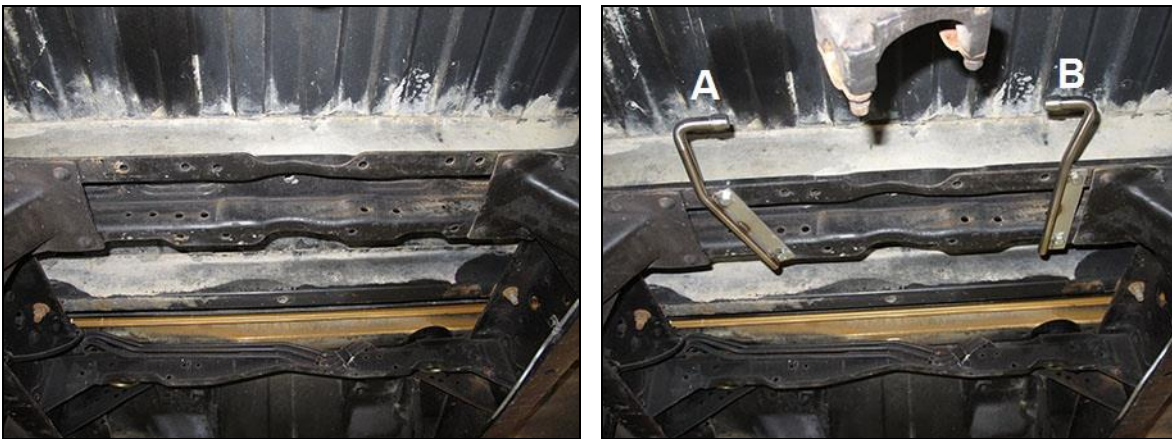


Figure 1
Aft-muffler hanger rod attachment to frame crossmember (driver's side – A & passenger's side – B)

8. Feed the left and right side over-axle tubes over the rear axle and install them into the muffler outlets before tightening the clamps sufficiently enough to hold the basic component positions, but still allow adjustment.
9. Connect the barbed hanger rods on the over-axle tubes to the hanger rods previously attached to the bottom of the truck frame crossmember using two of the supplied rubber hanger isolators; lubricating the hanger rods with any light penetrating oil will greatly ease this task.
10. Attach the left and right side tailpipe hangers to the outside faces of the frame, behind the rear tires, using the supplied 3/8 x 1” nuts and bolts. The 90° bend tabs on the hanger plates must be wrapped under the frame rail. Ensure that these are touching the frame during and after the bolt tightening operation (**Figures 2 & 3**).

NOTE: The intended attachment holes are sometimes occupied by rivets holding a specific stock exhaust hanger to the frame. You must remove the rivets and the stock hanger to enable proper installation of the supplied hangers. A cut-off wheel or grinder can be used to efficiently remove the rivet head prior to driving the rivet out of the hole with a punch and chisel.

11. Using a 1/4" drill bit, drill a hole through both vehicle rails that corresponds with the location of the 1/4" hole in each tailpipe hanger bracket (just installed). Once done, install and tighten the supplied 1/4" x 3/4" nuts and bolts.

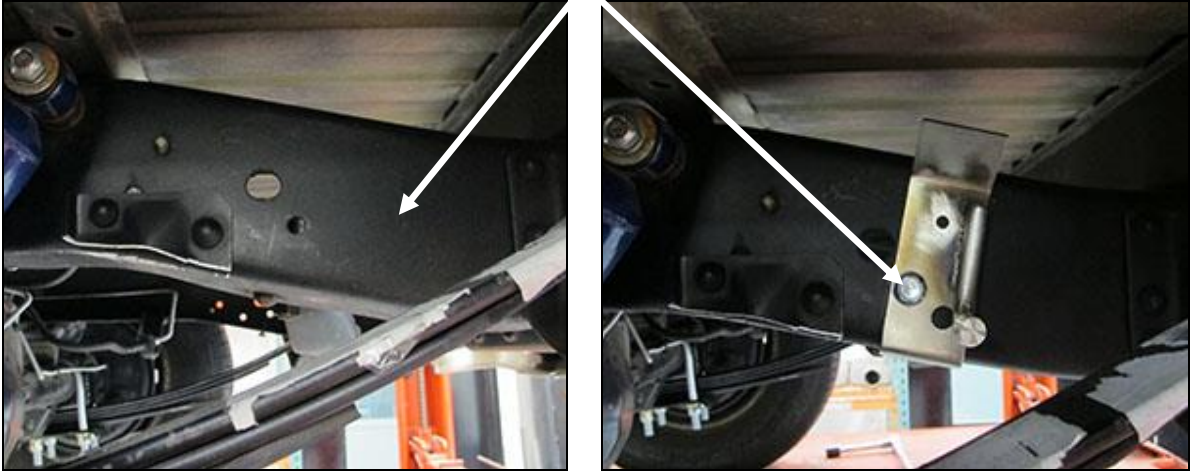


Figure 2
Driver's side tailpipe hanger attachment – use factory hole at arrow point

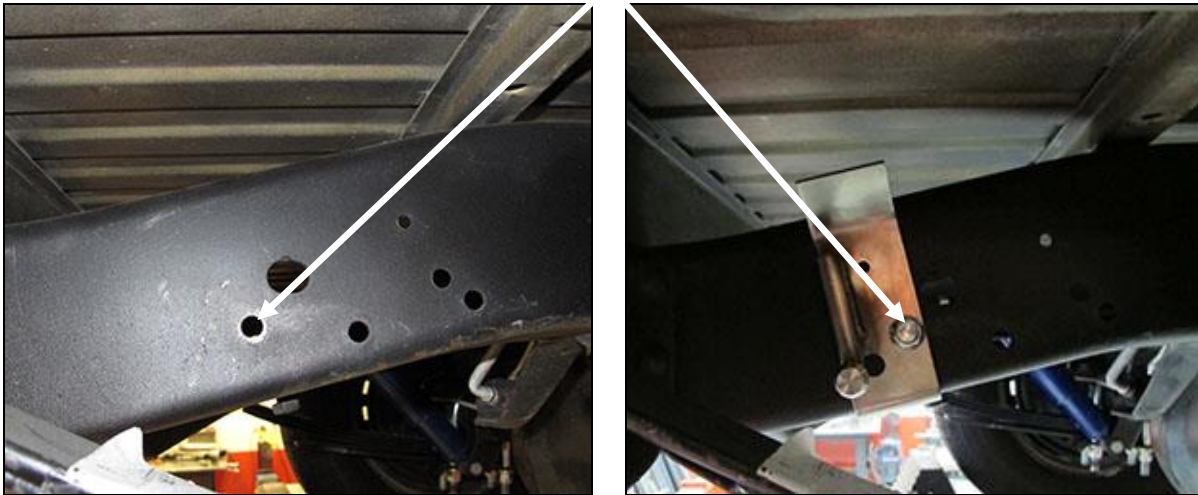


Figure 3
Passenger's side tailpipe hanger attachment – use factory hole at arrow point

12. Place the last two remaining band clamps over the inlets of the left and right side tailpipe assemblies and install them onto the outlets of the over-axle pipes. Tighten the clamps sufficiently to hold the basic component position, but still allow adjustment.
13. Connect the hanger rods on the tailpipes to the hangers bolted to the frame in step 10 with the remaining two supplied rubber hanger isolators. Lubricating the hanger rods with any light penetrating oil will greatly ease this task.
14. Methodically align all system components for best fitment and fully tighten all clamps. It is recommended that the entire system be wiped down with a rag and light penetrating oil to prevent hand prints from becoming permanent stains once they are subjected to heat from the exhaust.

Any questions? Please contact Technical Service: 1-866-464-6553 or 270-781-9741. For online help, please refer to: www.holley.com

COMPATIBILITY INFORMATION:

These exhaust systems were designed for direct installation with compatible HOOKER™ LS swaps headers and engine and transmission mounting components listed for this vehicle application. If needed, additional compatible LS engine swap components, such as EFI fuel control systems, fuel filters, fuel pumps, plumbing hose/fittings, valve covers and accessory drive brackets can be found at www.holley.com.

As shipped, the bend geometry of this system's inlet tubes (forward of the crossover) is only directly compatible with HOOKER™ LS swap headers and transmission crossmembers for this application. As such, interference with factory GM, or aftermarket transmission crossmembers and/or poor line-up characteristics with other brands of headers should be expected. Such issues can be remedied through modification of the supplied HOOKER™ inlet tubes, or the fabrication of new inlet pipes, to provide compatibility with the components installed on your vehicle.

These Hooker exhaust systems are compatible with driveshafts up to 4" in diameter, a stock size spare tire mounted in its original location and most aftermarket trailer hitches.

Compatibility with typical 4"/6" suspension drops for these trucks has been accounted for in the tube bend geometry of these systems; installation/use with drops of 5"/7", or greater, may require modifications to the tailpipes where they cross over the rear axle tubes.

LIMITATION OF LIABILITY – DISCLAIMER:

The regulation of emissions production, noise levels, and safety standards is undertaken by the federal government, each of the fifty state legislatures, and by many local municipalities, towns, and counties.

HOOKER™ makes no warranties of merchantability, of fitness for particular purpose, or that its products are approved for general use, or that its products comply with laws, regulations, or ordinances in the state where they may be sold to the ultimate purchaser, the consumer.

Unless expressly stated to the contrary in the catalog, instruction sheet; or price list, the entire risk as to the conformity of any company product in any such state and as to repair should the product prove to be defective or non-conforming, is on the retail purchaser, the buyer, the ultimate consumer, of such product and it is not upon the seller, distributor, or manufacturer.

In this connection, the retail purchaser, the buyer, the ultimate consumer assumes the burden of the entire cost of any and all necessary service, alterations, or repair.

THE FOREGOING STATEMENT LIMITS THE LIABILITY OF THE MANUFACTURER.

California vehicle code, sections 27156 and 38391, prohibits the advertising, offering for sale, or installation of any device, which modifies a vehicle's emission control system, unless exempted, unless otherwise noted. HOOKER™ Headers that have not received an Executive Order (E.O.) exemption from these code sections are not legal for sale or use in California on vehicles originally equipped with catalytic converters, except for racing vehicles, which may never be driven upon a highway. Check with your local authorities to determine if these headers are legal for use in your particular area.

Technical Service: 1-866-464-6553

Phone: 1-270-781-9741

For online help, please refer to the Tech Service section of our website: www.holley.com

© 2015 Holley Performance Products, Inc. All rights reserved.

199R10757

Revision Date: 2-12-16