



## LED Light Bar 553-107

### Kit Contents:

- LED Light Bar
- Roll Bar Mount
- Flush Mount Adapter
- 9" CAN cable (558-428)

**NOTE:** The Holley 553-107 LED Light Bar is only compatible with Holley EFI V4 Firmware or later. The Holley 553-107 LED Light Bar **MUST** be used with the 553-106 Holley EFI Digital Dash or the 553-109 Holley Stand-Alone Digital Dash.

When using this LED Light Bar with a 553-106 or 553-109 Digital Dash, please refer to either individual manual for detailed programming instructions. The latest versions of these manuals can be found on their product pages at [www.holley.com](http://www.holley.com)

The Light Bar is connected to a 553-106 or 553-109 Dash with the supplied 9" CAN connector cable.

### Service Items:

- 558-430 – CAN Adapter
- 558-424 – 4' CAN Cable
- 558-425 – 8' CAN Cable
- 558-426 – 12' CAN Cable
- 558-428 – 9" CAN Cable

**NOTE:** LED QUICK START GUIDE IS LOCATED ON THE BACK OF THIS SHEET. PLEASE REFER TO IT FOR SETUP INFORMATION.

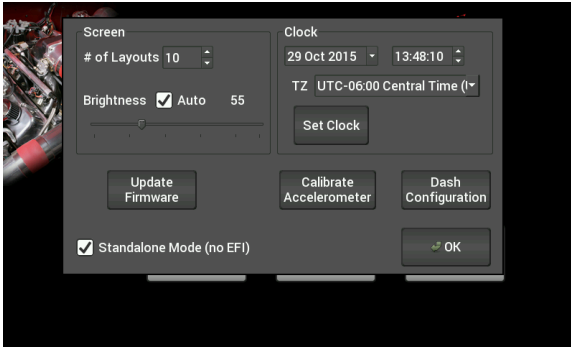
**Technical Support: 1-866-464-6553**

© Holley Performance Products, Inc.

**199R10943**

**Revision Date: 3-1-16**

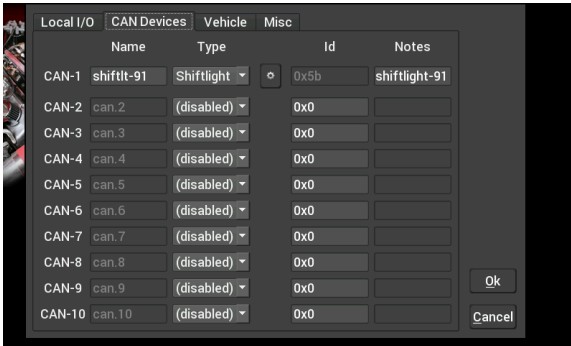
# LED LIGHT BAR QUICK START GUIDE



## STEP 1:

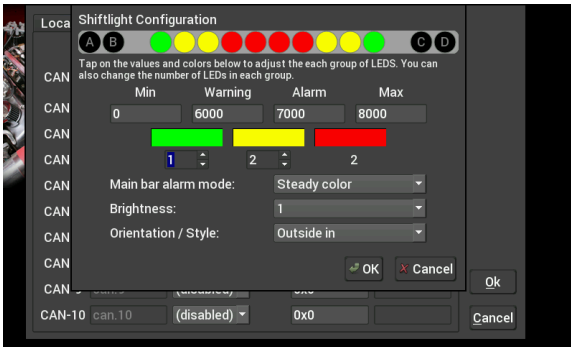
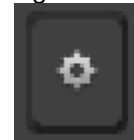
After plugging your LED Light Bar into the Dash, power it up and select "Dash Configuration" from the Configuration Menu

Ensure the dash has 4.0.27 or newer firmware  
Ensure the ECU has 4.0.59 or newer firmware



## STEP 2:

Choose the "CAN Devices" tab and click on the Configuration Icon

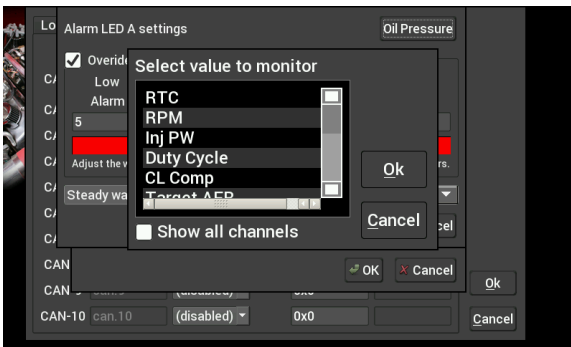


## STEP 3:

Change RPM ranges, LED Brightness, Flash Rate & Orientation from this menu.

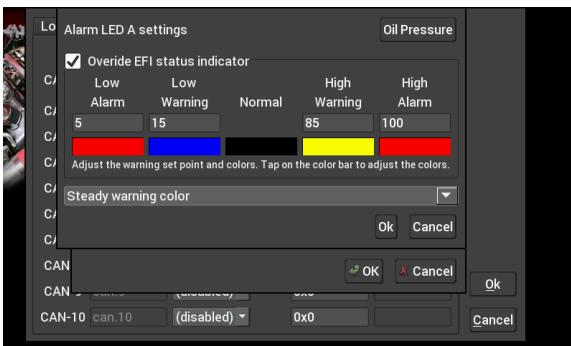
Min = RPM at which the first LEDs will turn on

\*Set all RPM values to the same number if you do not want a progressive light.



## STEP 4:

To configure the outer 4 warning LEDs (A,B,C,D) tap on the LED you wish to configure. To map that LED to a specific channel tap the box in the upper right hand corner. This brings up a table of all available channels.



## STEP 5:

Now you can set up your minimum and maximum values. Oil Pressure is used in this example.