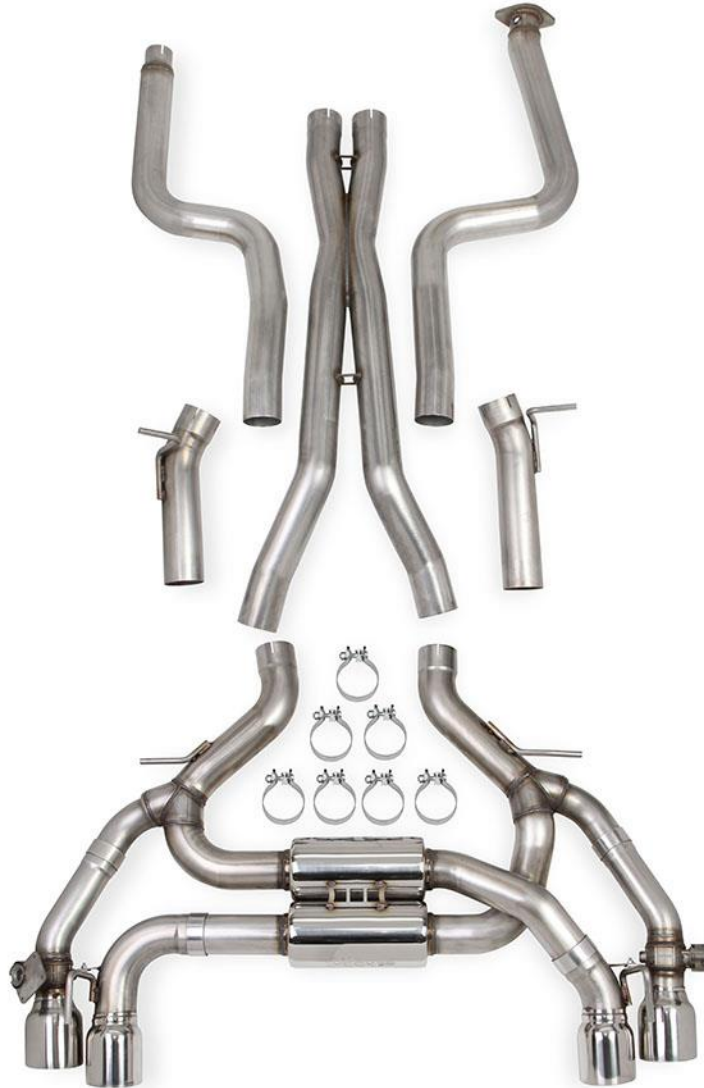




**2016-2018 Chevrolet Camaro SS  
Blackheart RACE ONLY Dual Transverse Mufflers Dual Mode Exhaust System w/ Quad Tips  
70501384-RHKR (Fits Manual Transmission)  
Installation Instructions**



Thank you for making HOOKER HEADERS your choice in a high-performance exhaust system. Extensive dyno/track testing has enabled HOOKER to offer the most advanced design in exhaust systems. The installation, while not complex, will take a certain amount of time. However, the additional horsepower and improved performance will more than justify your efforts. Proper installation and maintenance will ensure long life and maximum performance from your HOOKER HEADER exhaust system.

**BEFORE STARTING:**

Your vehicle must be raised a minimum of 36 inches. A floor hoist is ideal. If no hoist is available, we strongly urge the use of axle stands as a safety measure. Please read these instructions in their entirety before attempting installation.

**CAUTION! WORK ONLY ON A LEVEL SURFACE. USE JACKS /JACK STANDS OF SUFFICIENT CAPACITY TO LIFT AND SUPPORT YOUR VEHICLE. NEVER WORK UNDER A VEHICLE SUPPORTED BY A FLOOR OR BUMPER JACK.**

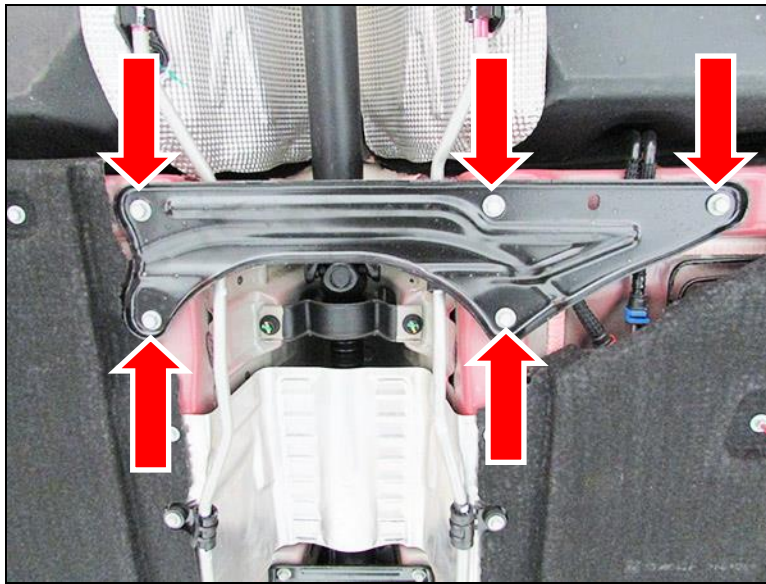
## **INCLUDED HARDWARE:**

<b>P/N</b>	<b>Qty.</b>	<b>Description</b>
556R22	3	Band Clamp, 2.5" x 1.25" Wide, SS Torca
556R23	8	Band Clamp, 3.0" x 1.25" Wide, SS Torca
505R54	2	2 1/4-20 Bolt
539R14	2	2 1/4-20 Lock Nut
599R94	2	Decal – Blackheart 4" x 2"

Check the hardware package. If anything is missing, please contact Technical Service at 1-866-464-6553 or 270-781-9741.

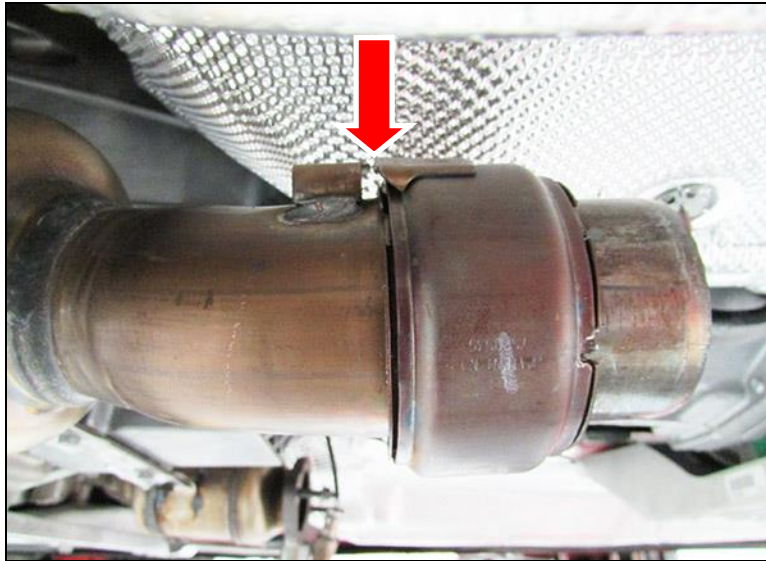
## **INSTALLATION:**

1. Disconnect the negative cable from the vehicle battery.
2. Lift the vehicle and secure on jack stands.
3. From under the vehicle, remove (x5) 15mm head bolts securing the center cross brace to the chassis. Set these parts aside as they will be re-used.



**Figure 1**

4. Disconnect the left and right side dual mode actuators on the wire harness.
5. Remove the right side post O2 sensor off the OE exhaust.
6. Loosen the left side band clamp securing the OE mid pipe to the left side post catalytic converter. Now cut the bracket off the pipe and remove the band clamp and gasket. These parts will not be re-used.



**Figure 2**

7. Remove (x2) 15mm head nuts securing the OE mid pipe to the right side post catalytic converter. Set these nuts and gasket aside as they will be re-used.
8. Remove (x4) 15mm head nuts securing the left and right side rearmost aluminum hanger brackets off the vehicle.
9. Slide the (x4) rubber isolation mounts off the vehicle and then the (x2) aluminum hanger brackets. Remove OE cat-back exhaust.
10. On a workbench, remove the (x4) rubber isolation mounts and then the (x2) aluminum hanger brackets off the OE cat-back exhaust and transfer onto the Blackheart exhaust system. We recommend transferring the isolation mounts and aluminum brackets one a time to ensure they go to the appropriate locations.
11. Using (x1) supplied 2.5" band clamp, install the Blackheart left side front pipe. Do not tighten the band clamp.
12. Using the original gasket (replace if necessary) and (x2) 15mm head nuts removed from step 7, install the Blackheart right side front pipe. Do not tighten the (x2) nuts.
13. Using (x2) supplied 3.0" band clamps, install the Blackheart X-pipe onto the left and right side Blackheart front pipe. Do not tighten the clamps.
14. Using (x2) supplied 3.0" band clamps, install the left and right side Blackheart mid pipes onto the Blackheart X-pipe and secure the rubber isolation mounts on the vehicle. Do not tighten the band clamps.
15. On a workbench, slide the left and right side Blackheart inner tips onto the muffler section using (x2) supplied 3.0" band clamps. Do not tighten the band clamps.
16. Using (x2) supplied 3.0" band clamps, install the Blackheart muffler section onto the left and right mid pipes and secure the rubber isolation mounts and aluminum brackets onto the vehicle using (x4) 15mm head nuts removed from step 8. Tighten the (x4) 15mm head nuts. Do not tighten the band clamps.
17. Using (x2) 2.5" band clamps, slide the left and right side Blackheart outer tips onto the muffler section. Do not tighten the band clamps.
18. Install the center cross brace removed from step 3 using the original (x5) bolts and tighten.
19. Remove the left and right OE dual mode actuators and transfer onto the left and right side Blackheart valve brackets and plug the wire harness back into the actuator.

**NOTE:** It is very important to ensure you look at the OE valves before you remove the actuators. IF they are in the closed position, install the OE dual mode actuators with the Blackheart valves closed or if they are open, install them with the valves open. Furthermore, ensure that the left and right dual mode actuator goes back to the left and right side of the vehicle as removed.

20. Using (x2) supplied 1/4-20 bolts and (x2) 1/4-20 lock nuts, secure the left and right side tip brackets with the outer tip brackets to the rearmost of the vehicle. Tighten the (x2) 1/4-20 bolts and nuts.
21. Align the Blackheart exhaust system including the left and right side tips to your desired position and tighten the (x2) 15mm head nuts from step 11 and then the (x11) band clamps from steps, 11, 13, 14, 15, 16, and 17. Ensure that the complete Blackheart exhaust system including the OE dual mode actuator and the Blackheart valve bracket is free and clear of the vehicle. You may have to rotate the outer tips to clear.
22. Install the right side post O2 sensor onto the Blackheart exhaust.
23. Connect the battery, start the engine, and check for leaks.
24. Re-check your work.
25. Remove the jack stands and lower the vehicle.
26. After 150 miles, re-check and tighten all bolts and clamps.

**NOTE: It is normal for the Blackheart exhaust system to emit smoke for the first few minutes during break-in period.**

#### **LIMITATION OF LIABILITY – DISCLAIMER:**

The regulation of emissions production, noise levels, and safety standards is undertaken by the federal government, each of the fifty state legislatures, and by many local municipalities, towns, and counties.

HOOKER™ makes no warranties of merchantability, of fitness for particular purpose, or that its products are approved for general use, or that its products comply with laws, regulations, or ordinances in the state where they may be sold to the ultimate purchaser, the consumer.

Unless expressly stated to the contrary in the catalog, instruction sheet; or price list, the entire risk as to the conformity of any company product in any such state and as to repair should the product prove to be defective or non-conforming, is on the retail purchaser, the buyer, the ultimate consumer, of such product and it is not upon the seller, distributor, or manufacturer.

In this connection, the retail purchaser, the buyer, the ultimate consumer assumes the burden of the entire cost of any and all necessary service, alterations, or repair.

#### **THE FOREGOING STATEMENT LIMITS THE LIABILITY OF THE MANUFACTURER.**

California vehicle code, sections 27156 and 38391, prohibits the advertising, offering for sale, or installation of any device, which modifies a vehicle's emission control system, unless exempted, unless otherwise noted. HOOKER™ Headers that have not received an Executive Order (E.O.) exemption from these code sections are not legal for sale or use in California on vehicles originally equipped with catalytic converters, except for racing vehicles, which may never be driven upon a highway. Check with your local authorities to determine if these headers are legal for use in your particular area.

© 2016 Hooker Headers, Inc. All rights reserved. Tous Droits Réservés.

**199R10988**

**Revision Date: 8-14-18**