



**2016-2018 Chevrolet Camaro SS NPP A8
Blackheart Axle Back Dual Transverse Muffler Dual Mode Exhaust System w/ Quad Tips
70401337-RHKR
Installation Instructions**



Thank you for making HOOKER HEADERS your choice in a high-performance exhaust system. Extensive dyno/track testing has enabled HOOKER to offer the most advanced design in exhaust systems. The installation, while not complex, will take a certain amount of time. However, the additional horsepower and improved performance will more than justify your efforts. Proper installation and maintenance will ensure long life and maximum performance from your HOOKER HEADER exhaust system.

BEFORE STARTING:

Your vehicle must be raised a minimum of 36 inches. A floor hoist is ideal. If no hoist is available, we strongly urge the use of axle stands as a safety measure. Please read these instructions in their entirety before attempting installation.

CAUTION! WORK ONLY ON A LEVEL SURFACE. USE JACKS /JACK STANDS OF SUFFICIENT CAPACITY TO LIFT AND SUPPORT YOUR VEHICLE. NEVER WORK UNDER A VEHICLE SUPPORTED BY A FLOOR OR BUMPER JACK.

INCLUDED HARDWARE:

P/N	Qty.	Description
556R22	2	Band Clamp, 2.5" x 1.25" Wide, SS Torca
556R28	2	Band Clamp, 2.75" x 1.25" Wide, SS Torca
556R23	4	Band Clamp, 3.0" x 1.25" Wide, SS Torca
505R54	2	1/4-20 Bolt
539R14	2	1/4-20 Lock Nut
556R94	2	Decal – Blackheart 4" x 2"

Check the hardware package. If anything is missing, please contact Technical Service at 1-866-464-6553 or 270-781-9741.

INSTALLATION:

1. Disconnect the negative cable from the vehicle battery.
2. Lift the vehicle and secure on jack stands.
3. Remove (x6) 8mm head bolts securing the left and right side dual mode actuators off the OE exhaust.

- From under the vehicle, use a permanent marker to mark the left and right side OE mid pipe directly under the end of the suspension cross member. This is located after the crushed section of the OE mid pipe. Mark another line towards the rear of the vehicle exactly 2.0" after your initial marks under the suspension cross member.

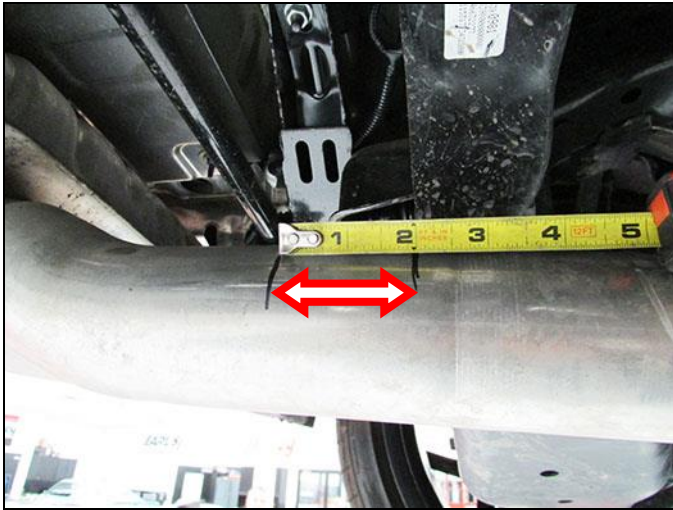


Figure 1 (Left Side)

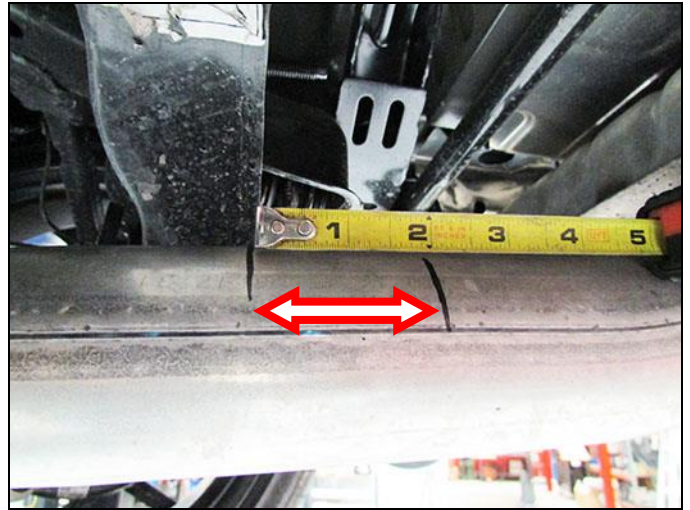


Figure 2 (Right Side)

- Use masking tape to wrap around the OE mid pipe where your rearmost permanent marks are to ensure a straight cut. Draw arrows to ensure you cut at the correct side of the masking tape. **DOUBLE CHECK AND MEASURE TWICE BEFORE CUTTING.**



Figure 3 (Left Side)

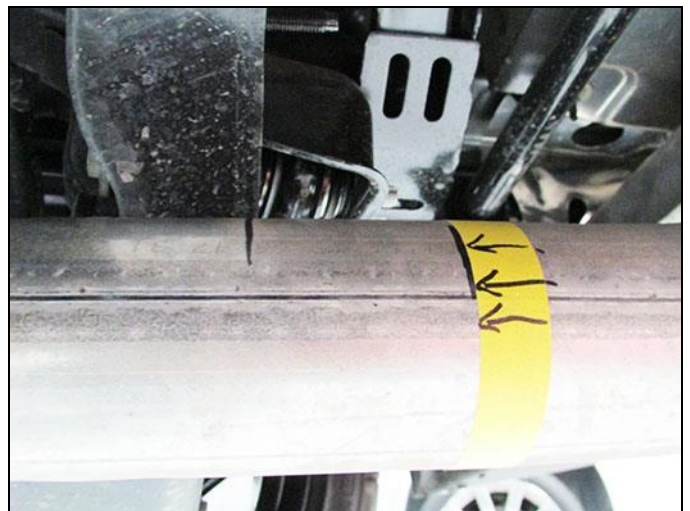


Figure 4 (Right Side)

- When complete, de-burr the inside and outside of the cut tube (BE CAREFUL AS THE CUT ENDS WILL BE VERY SHARP).
- Remove (x4) 15mm head nuts securing the left and right side rear most aluminum hanger brackets off the vehicle.
- Slide the (x2) rubber isolation mounts off the vehicle and then the (x2) aluminum hanger brackets. Remove OE axle back exhaust.
- On a workbench, remove the (x2) rubber isolation mounts and then the (x2) aluminum hanger brackets off the OE axle back exhaust and transfer onto the Blackheart Axle Back Exhaust System. We recommend transferring the isolation mounts and aluminum brackets one a time to ensure they go to the appropriate locations.
- Using (x2) supplied 2.75" band clamps, install the (x2) supplied adapter pipes over the OE mid pipe (The adapters should slide approximately 3.75" over the OE mid pipe). Tighten the (x2) band clamps.
- On a workbench, slide the left and right side Blackheart inner tips onto the muffler section using (x2) supplied 3.0" band clamps. Do not tighten the band clamps.

12. Using (x2) 3.0" band clamps, install the Blackheart muffler section onto the left and right adapter pipes and secure the rubber isolation mounts and aluminum brackets onto the vehicle using (x4) 15mm head nuts removed from step 7. Tighten the (x4) 15mm head nuts. Do not tighten the band clamps.
13. Using (x2) 2.5" band clamps, slide the left and right side Blackheart outer tips onto the muffler section. Do not tighten the band clamps.
14. Using (x2) supplied 1/4-20 bolts and (x2) 1/4-20 lock nuts, secure the left and right side tip brackets with the outer tip brackets to the rearmost of the vehicle. Do not tighten the 1/4-20 bolts and nuts.
15. Using the (x6) bolts removed from step 3, install the dual mode actuators onto the Blackheart valve brackets. You may have to rotate the valve on the Blackheart exhaust to match the OE dual mode actuator. Tighten the (x6) bolts.
16. Align the Blackheart Exhaust System including the left and right side tips to your desired position and tighten the (x6) band clamps from steps, 11, 12, and 13. Tighten the 1/4-20 bolts/nuts from step 14. Ensure that the OE dual mode actuators and the Blackheart valve brackets are free and clear of the vehicle. Connect the battery, start the engine, and check for leaks.
17. Recheck your work.
18. Remove the jack stands and lower the vehicle.
19. After 150 miles, re-check and tighten all bolts and clamps.

NOTE: It is normal for the Blackheart Exhaust System to emit smoke for the first few minutes during break-in period.

LIMITATION OF LIABILITY – DISCLAIMER:

The regulation of emissions production, noise levels, and safety standards is undertaken by the federal government, each of the fifty state legislatures, and by many local municipalities, towns, and counties.

HOOKER™ makes no warranties of merchantability, of fitness for particular purpose, or that its products are approved for general use, or that its products comply with laws, regulations, or ordinances in the state where they may be sold to the ultimate purchaser, the consumer.

Unless expressly stated to the contrary in the catalog, instruction sheet; or price list, the entire risk as to the conformity of any company product in any such state and as to repair should the product prove to be defective or non-conforming, is on the retail purchaser, the buyer, the ultimate consumer, of such product and it is not upon the seller, distributor, or manufacturer.

In this connection, the retail purchaser, the buyer, the ultimate consumer assumes the burden of the entire cost of any and all necessary service, alterations, or repair.

THE FOREGOING STATEMENT LIMITS THE LIABILITY OF THE MANUFACTURER.

California vehicle code, sections 27156 and 38391, prohibits the advertising, offering for sale, or installation of any device, which modifies a vehicle's emission control system, unless exempted, unless otherwise noted. HOOKER™ Headers that have not received an Executive Order (E.O.) exemption from these code sections are not legal for sale or use in California on vehicles originally equipped with catalytic converters, except for racing vehicles, which may never be driven upon a highway. Check with your local authorities to determine if these headers are legal for use in your particular area.

© 2016 Hooker Headers, Inc. All rights reserved. Tous Droits Réservés.

199R11084

Revision Date: 8-14-18