



**2016-2018 Chevrolet Camaro SS NPP A8
Blackheart RACE ONLY Single Transverse Muffler Dual Mode Exhaust System w/ Quad Tips
705013112RHKR (Fits Automatic Transmission)
Installation Instructions**



Thank you for making HOOKER HEADERS your choice in a high-performance exhaust system. Extensive dyno/track testing has enabled HOOKER to offer the most advanced design in exhaust systems. The installation, while not complex, will take a certain amount of time. However, the additional horsepower and improved performance will more than justify your efforts. Proper installation and maintenance will ensure long life and maximum performance from your HOOKER HEADER exhaust system.

BEFORE STARTING:

Your vehicle must be raised a minimum of 36 inches. A floor hoist is ideal. If no hoist is available, we strongly urge the use of axle stands as a safety measure. Please read these instructions in their entirety before attempting installation.

CAUTION! WORK ONLY ON A LEVEL SURFACE. USE JACKS /JACK STANDS OF SUFFICIENT CAPACITY TO LIFT AND SUPPORT YOUR VEHICLE. NEVER WORK UNDER A VEHICLE SUPPORTED BY A FLOOR OR BUMPER JACK.

INCLUDED HARDWARE:

P/N	Qty.	Description
556R22	3	Band Clamp, 2.5" x 1.25" Wide, SS Torca
556R23	8	Band Clamp, 3.0" x 1.25" Wide, SS Torca
505R54	2	2 1/4-20 Bolt
539R14	2	2 1/4-20 Lock Nut
599R94	2	Decal - Blackheart 4" x 2"

Check the hardware package. If anything is missing, please contact Technical Service at 1-866-464-6553 or 270-781-9741.

INSTALLATION:

1. Disconnect the negative cable from the vehicle battery.
2. Lift the vehicle and secure on jack stands.
3. From under the vehicle, remove (x5) 13mm head bolts securing the center cross brace to the chassis. Set these parts aside as they will be re-used.

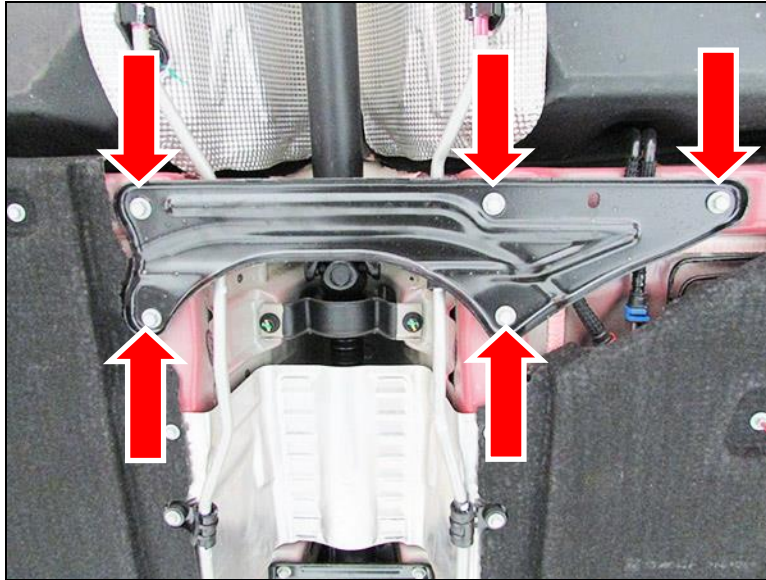


Figure 1

4. Remove (x6) 8mm head bolts securing the left and right side dual mode actuators off the OE exhaust.
5. Remove (x6) 8mm head bolts securing the left and right side AFM valve actuators off the OE exhaust.
6. Loosen the left side band clamp securing the OE mid pipe to the left side post catalytic converter. Cut the bracket off the pipe and remove the band clamp and gasket. **NOTE:** These parts will not be re-used.

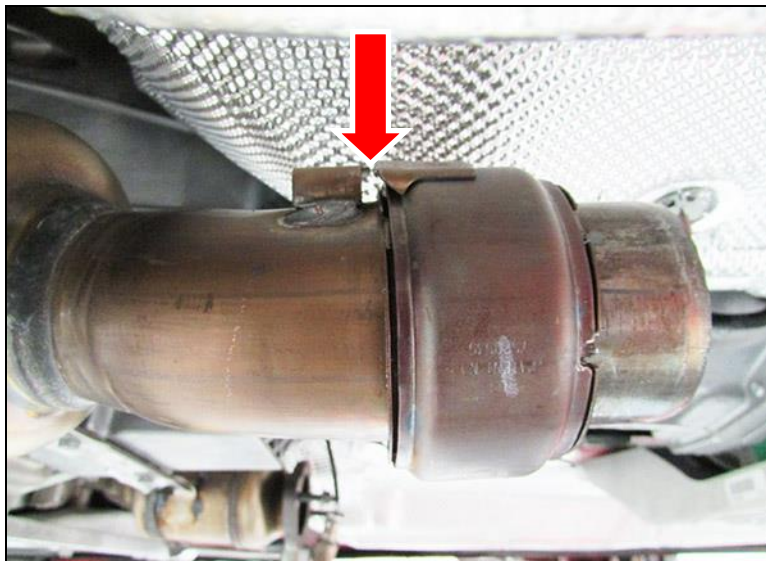


Figure 2

7. Remove the right side post O2 sensor and then (x2) 15mm head nuts securing the OE mid pipe to the right side catalytic converter. Set these nuts and gasket aside as they will be re-used.
8. Remove (x4) 15mm head nuts securing the left and right side rearmost aluminum hanger brackets off the vehicle.

9. Slide the (x4) rubber isolation mounts off the vehicle and then the (x2) aluminum hanger brackets. Remove OE cat-back exhaust.
 10. On a workbench, remove the (x4) rubber isolation mounts and then the (x2) aluminum hanger brackets off the OE cat-back exhaust and transfer onto the Blackheart Exhaust System. We recommend transferring the isolation mounts and aluminum brackets one at a time to ensure they go to the appropriate locations.
 11. Using (x1) supplied 2.5" band clamp, install the Blackheart left side front pipe. Do not tighten the band clamp.
 12. Using the original gasket (replace if necessary) and (x2) 15mm head nuts removed from step 7, install the Blackheart right side front pipe. Do not tighten the (x2) nuts.
 13. Using (x2) supplied 3.0" band clamps, install the Blackheart X-pipe onto the left and right side Blackheart front pipes. Do not tighten the clamps.
 14. Using (x2) 3.0" band clamps, install the left and right side Blackheart axle pipes onto the Blackheart X-pipe and secure the rubber isolation mounts on the vehicle. Do not tighten the band clamps.
 15. On a workbench, slide the left and right side Blackheart inner tips onto the muffler section using (x2) supplied 3.0" band clamps. Do not tighten the band clamps.
 16. Using (x2) 3.0" band clamps, install the Blackheart muffler section onto the left and right axle pipes and secure the rubber isolation mounts and aluminum brackets onto the vehicle using (x4) 15mm head nuts removed from step 8. Tighten the (x4) 15mm head nuts. Do not tighten the band clamps.
 17. Using (x2) 2.5" band clamps, slide the left and right side Blackheart outer tips onto the muffler section. Do not tighten the band clamps.
 18. Install the center cross brace removed from step 3 using the original (x5) bolts and tighten.
 19. Using the (x6) bolts removed from step 4, install the dual mode actuators onto the Blackheart valve brackets. You may have to rotate the valve on the Blackheart exhaust to match the OE dual mode actuator. Tighten the (x6) bolts.
- NOTE:** You may have to un-clip the harness off the chassis to bolt the actuators on the brackets.
20. Using the (x6) bolts removed from step 5, install the AFM valve actuators onto the Blackheart valve brackets. You may have to rotate the valve on the Blackheart exhaust to match the OE AFM valve actuator. Tighten the (x6) bolts.
- NOTE:** You may have to un-clip the harness off the chassis to bolt the actuators on the brackets.
21. Using (x2) supplied 1/4-20 bolts and (x2) 1/4-20 lock nuts, secure the left and right side tip brackets with the outer tip brackets to the rearmost of the vehicle. Do not tighten the (x2) 1/4-20 bolts and nuts.
 22. Align the Blackheart Exhaust System including the left and right side tips to your desired position and tighten the (x2) 15mm head nuts from step 12 and then the (x11) band clamps from steps, 11, 13, 14, 15, 16, and 17. Tighten the 1/4-20 bolts/nuts from step 21.
 23. Connect the battery, start the engine, and check for leaks.
 24. Re-check your work.
 25. Remove the jack stands and lower the vehicle.
 26. After 150 miles, re-check and tighten all bolts and clamps.

NOTE: It is normal for the Blackheart Exhaust System to emit smoke for the first few minutes during break-in period.

LIMITATION OF LIABILITY – DISCLAIMER:

The regulation of emissions production, noise levels, and safety standards is undertaken by the federal government, each of the fifty state legislatures, and by many local municipalities, towns, and counties.

HOKKER™ makes no warranties of merchantability, of fitness for particular purpose, or that its products are approved for general use, or that its products comply with laws, regulations, or ordinances in the state where they may be sold to the ultimate purchaser, the consumer.

Unless expressly stated to the contrary in the catalog, instruction sheet; or price list, the entire risk as to the conformity of any company product in any such state and as to repair should the product prove to be defective or non-conforming, is on the retail purchaser, the buyer, the ultimate consumer, of such product and it is not upon the seller, distributor, or manufacturer.

In this connection, the retail purchaser, the buyer, the ultimate consumer assumes the burden of the entire cost of any and all necessary service, alterations, or repair.

THE FOREGOING STATEMENT LIMITS THE LIABILITY OF THE MANUFACTURER.

California vehicle code, sections 27156 and 38391, prohibits the advertising, offering for sale, or installation of any device, which modifies a vehicle's emission control system, unless exempted, unless otherwise noted. HOKKER™ Headers that have not received an Executive Order (E.O.) exemption from these code sections are not legal for sale or use in California on vehicles originally equipped with catalytic converters, except for racing vehicles, which may never be driven upon a highway. Check with your local authorities to determine if these headers are legal for use in your particular area.

© 2016 Hooker Headers, Inc. All rights reserved. Tous Droits Réservés.

199R11099

Revision Date: 8-14-18