



**2016-2020 Chevrolet Camaro SS 6MT
Blackheart Crush Delete Pipe Exhaust System
705013126RHKR (Fits MANUAL TRANSMISSION ONLY)
Installation Instructions**



Thank you for making HOOKER HEADERS your choice in a high-performance exhaust system. Extensive dyno/track testing has enabled HOOKER to offer the most advanced design in exhaust systems. The installation, while not complex, will take a certain amount of time. However, the additional horsepower and improved performance will more than justify your efforts. Proper installation and maintenance will ensure long life and maximum performance from your HOOKER HEADER exhaust system.

BEFORE STARTING:

Your vehicle must be raised a minimum of 36 inches. A floor hoist is ideal. If no hoist is available, we strongly urge the use of axle stands as a safety measure. Please read these instructions in their entirety before attempting installation.

CAUTION! WORK ONLY ON A LEVEL SURFACE. USE JACKS /JACK STANDS OF SUFFICIENT CAPACITY TO LIFT AND SUPPORT YOUR VEHICLE. NEVER WORK UNDER A VEHICLE SUPPORTED BY A FLOOR OR BUMPER JACK.

INCLUDED HARDWARE:

P/N	Qty.	Description
556R28	4	Band Clamp, 2.75" x 1.25" Wide, SS Torca
556R94	2	Decal – Blackheart 4" x 2"

Check the hardware package. If anything is missing, please contact Technical Service at 1-866-464-6553 or 270-781-9741.

INSTALLATION:

1. Disconnect the negative cable from the vehicle battery.
2. Lift the vehicle and secure on jack stands.
3. Disconnect the left and right side dual mode actuators off the wire harness.
4. From under the vehicle, locate these 2 sections of the OE mid pipe. This section is right before the (x2) frontmost exhaust hangers after the OE X-pipe.

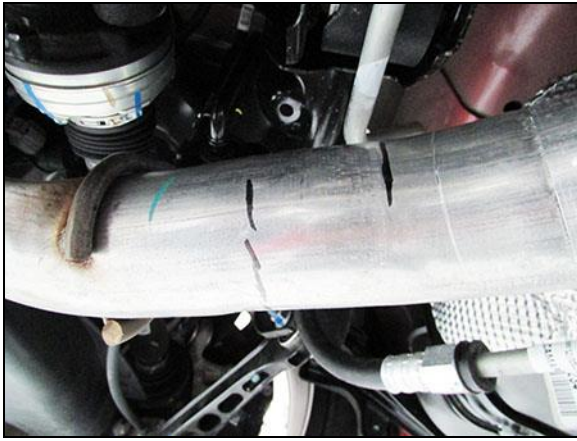


Figure 1 (Left Side)

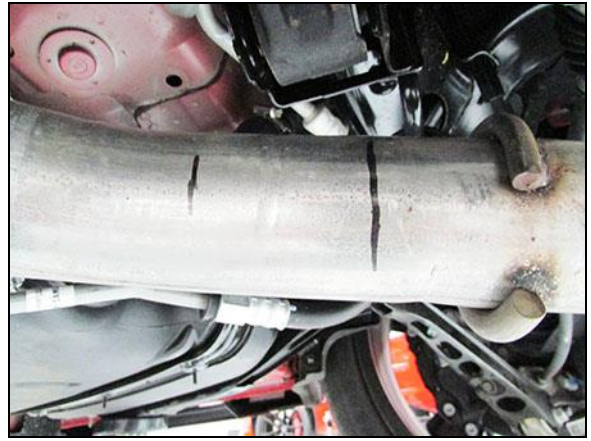


Figure 2 (Right Side)

5. With a permanent marker, locate the tangent line (where the bend ends and the straight section of the pipe begins) of the left side OE mid pipe and mark a straight line. Mark another straight line exactly 2.0" after your tangent mark (2.0" in the direction of the rear of the vehicle). We suggest using masking tape to wrap around the OE mid pipe to ensure a straight cut. Draw arrows to ensure you cut at the correct side of the masking tape. **DOUBLE CHECK AND MEASURE TWICE BEFORE CUTTING.**

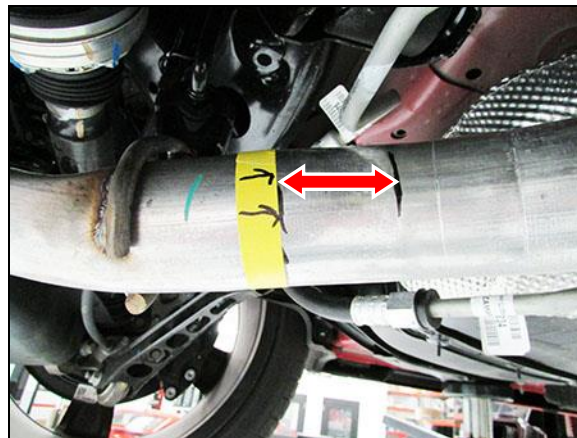


Figure 3

6. With a permanent marker, locate the tangent line (where the bend ends and the straight section of the pipe begins) of the right side OE mid pipe and mark a straight line. Mark another straight line exactly 2.5" after your tangent mark (2.5" in the direction of the rear of the vehicle). We suggest using masking tape to wrap around the OE mid pipe to ensure a straight cut. Draw arrows to ensure you cut at the correct side of the masking tape. **DOUBLE CHECK AND MEASURE TWICE BEFORE CUTTING.**

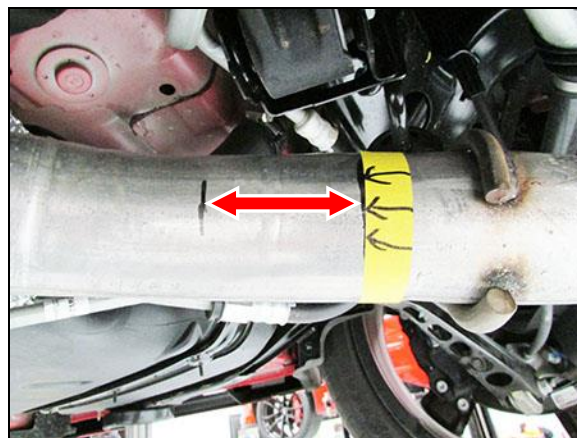


Figure 4

7. With a permanent marker, draw a line at the end of the left side OE mid pipe clamp mark (approximately 7.25" from the muffler to the clamp mark).

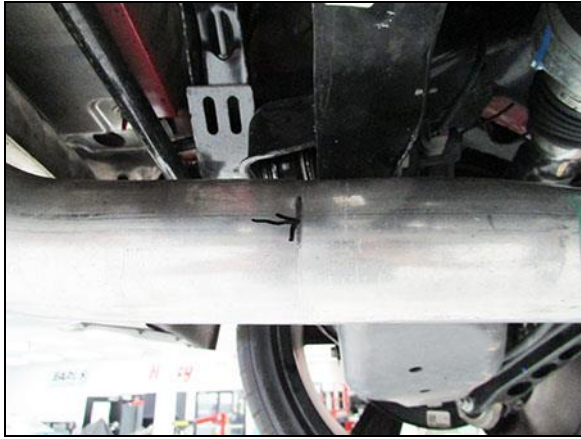


Figure 5

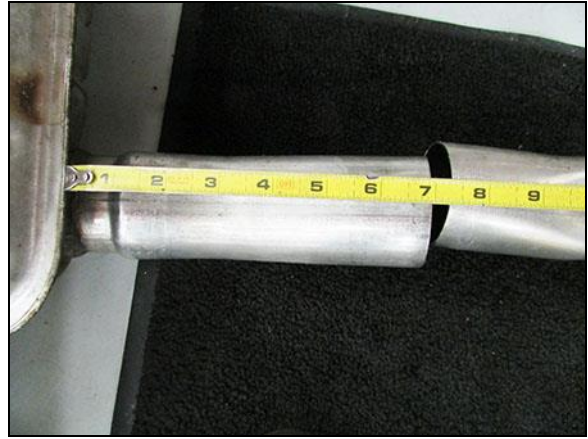


Figure 6

8. With a permanent marker, draw a line at the beginning of the right side OE mid pipe clamp mark (This is approximately 6 3/8" from the muffler to the clamp mark).

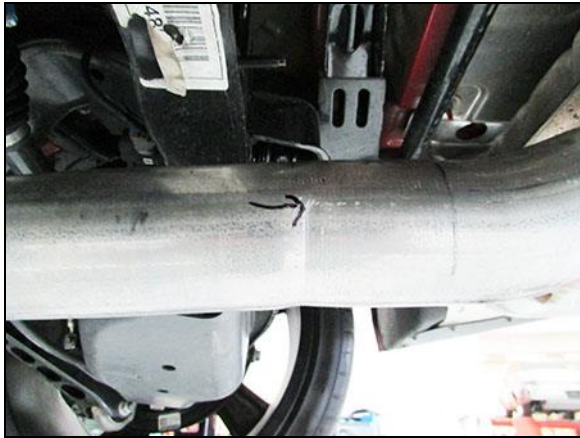


Figure 7



Figure 8

9. We suggest using masking tape to wrap around the OE mid pipe to ensure a straight cut. Draw arrows to ensure you cut at the correct side of the masking tape. **DOUBLE CHECK AND MEASURE TWICE BEFORE CUTTING.**



Figure 9



Figure 10

10. Slide the left and right side OE crushed sections off the isolation mounts and remove.
11. When complete, de-burr the inside and outside of the cut tube. **BE CAREFUL AS THE CUT ENDS WILL BE VERY SHARP.**

12. Remove (x4) 15mm head nuts securing the left and right side rearmost aluminum hanger brackets off the vehicle.
13. While sliding the muffler section towards the rear of the vehicle, install the left and right side Blackheart Crush Delete Pipes using (x4) 2.75" band clamps and secure onto the isolation mounts.
14. Slide the muffler section forward and install the (x4) 15mm head nuts securing the left and right side rearmost aluminum hanger brackets back onto the chassis. Tighten the (x4) 15mm head nuts.
15. Align the Blackheart Crush Delete Pipes and the OE exhaust system and tighten the (x4) band clamps.
16. Connect the battery, start the engine, and check for leaks.
17. Re-check your work.
18. Remove the jack stands and lower the vehicle.
19. After 150 miles, re-check and tighten all bolts and clamps.

NOTE: It is normal for the Blackheart Exhaust System to emit smoke for the first few minutes during break-in period.

LIMITATION OF LIABILITY – DISCLAIMER:

The regulation of emissions production, noise levels, and safety standards is undertaken by the federal government, each of the fifty state legislatures, and by many local municipalities, towns, and counties.

HOOKER™ makes no warranties of merchantability, of fitness for particular purpose, or that its products are approved for general use, or that its products comply with laws, regulations, or ordinances in the state where they may be sold to the ultimate purchaser, the consumer.

Unless expressly stated to the contrary in the catalog, instruction sheet; or price list, the entire risk as to the conformity of any company product in any such state and as to repair should the product prove to be defective or non-conforming, is on the retail purchaser, the buyer, the ultimate consumer, of such product and it is not upon the seller, distributor, or manufacturer.

In this connection, the retail purchaser, the buyer, the ultimate consumer assumes the burden of the entire cost of any and all necessary service, alterations, or repair.

THE FOREGOING STATEMENT LIMITS THE LIABILITY OF THE MANUFACTURER.

California vehicle code, sections 27156 and 38391, prohibits the advertising, offering for sale, or installation of any device, which modifies a vehicle's emission control system, unless exempted, unless otherwise noted. HOOKER™ Headers that have not received an Executive Order (E.O.) exemption from these code sections are not legal for sale or use in California on vehicles originally equipped with catalytic converters, except for racing vehicles, which may never be driven upon a highway. Check with your local authorities to determine if these headers are legal for use in your particular area.

© 2016 Hooker Headers, Inc. All rights reserved. Tous Droits Réservés.

199R11143

Revision Date: 4-21-20