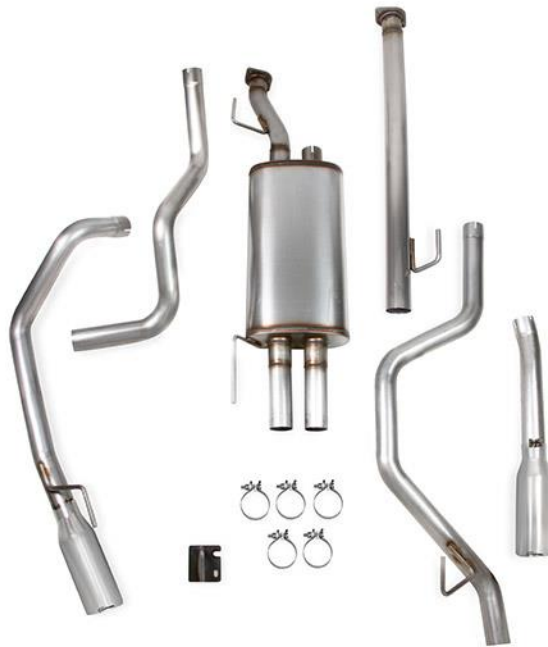




**2010-17 Toyota Tundra V8, 4.6/5.7L
BlackHeart Cat-Back Exhaust System, 409SS
70504407-RHKR
Installation Instructions**

- *2010-17 FITS CREW CAB w/ 5.6 FT. BED (145.7 WB)**
- *2010-17 FITS DOUBLE CAB w/ 6.6 FT. BED (145.7 WB)**
- *2010-17 FITS REGULAR CAB w/ 8 FT. BED (145.7 WB)**

THIS KIT IS DESIGNED TO FIT WITH THE OE HIDDEN HITCH. IT MAY NOT FIT AFTERMARKET HITCHES!!!!



Thank you for making HOOKER HEADERS your choice in a high-performance exhaust system. Extensive dyno/track testing has enabled HOOKER to offer the most advanced design in exhaust systems. The installation, while not complex, will take a certain amount of time. However, the additional horsepower and improved performance will more than justify your efforts. Proper installation and maintenance will ensure long life and maximum performance from your HOOKER HEADER exhaust system.

BEFORE STARTING:

Your vehicle must be raised a minimum of 36 inches. A floor hoist is ideal. If no hoist is available, we strongly urge the use of axle stands as a safety measure. Please read these instructions in their entirety before attempting installation.

CAUTION! WORK ONLY ON A LEVEL SURFACE. USE JACKS /JACK STANDS OF SUFFICIENT CAPACITY TO LIFT AND SUPPORT YOUR VEHICLE. NEVER WORK UNDER A VEHICLE SUPPORTED BY A FLOOR OR BUMPER JACK.

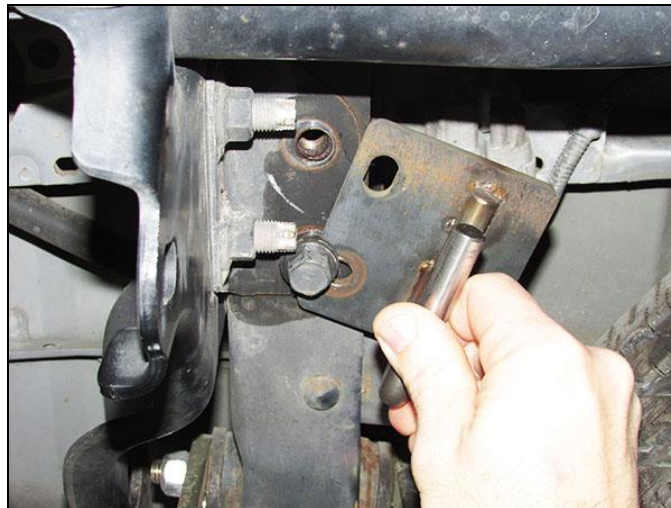
INCLUDED HARDWARE:

P/N	Qty.	Description
517R96W	1	Bracket, Toyota Assembly
516R77	1	1/2" 2-Hole Rubber Isolator
556R22	5	Band Clamp, 2.5" x 1.25" Wide, 4.0 SS Torca
599R94	2	Decal - Blackheart 4" x 2"

Check the hardware package. If anything is missing, please contact Technical Service at 1-866-464-6553 or 270-781-9741.

INSTALLATION:

1. Disconnect the negative cable from the vehicle battery.
2. If necessary, lift the vehicle and secure on jack stands.
3. Remove (x4) 14mm head bolts securing the OE exhaust system to the catalytic converters.
4. Remove the (x4) rubber isolation mounts off the vehicle and remove the OE exhaust system.
5. On a workbench, transfer the rubber isolation mounts off the OE exhaust and onto the BlackHeart Cat-Back Exhaust System. We recommend transferring the isolation mounts one at a time to ensure they go back to their original positions.
6. Using the original crush gasket (replace if necessary), install the right side BlackHeart Front Pipe onto the right side catalytic converter using the (x2) original bolts removed from step 3 and install the rubber isolation mount back onto the chassis. Do not tighten the bolts.
7. Using (x1) supplied 2.5" band clamp, install the BlackHeart Muffler section over the BlackHeart Front Pipe and secure the rubber isolation mounts back onto the chassis. Do not tighten the band clamp. Using the original crush gasket (replace if necessary) and (x2) original bolts removed from step 3, secure the BlackHeart Muffler section. Do not tighten.
8. Align the muffler so it is level and tighten the (x4) bolts from steps 6 and 7 and then the band clamp from step 7.
9. Using (x1) supplied 2.5" band clamp, install the right side BlackHeart Over-Axle Pipe over the right side muffler outlet tube and secure the rubber isolation mount onto the chassis. Do not tighten the band clamp.
10. Using (x1) supplied 2.5" band clamp, install the right side BlackHeart Tailpipe over the over-axle pipe. Do not tighten the band clamp.
11. Unbolt the rearmost 17mm head bolt securing the OE hitch to the frame and then loosen the front 17mm head bolt until the bolt head has approximately 1/4" gap from the hitch bracket. Install the supplied BlackHeart Hanger Bracket using the original hardware by sliding the notched section between the hitch bracket and the front bolt and secure the rear bolt and tighten.



12. Using (x1) supplied 2.5" band clamp, secure the left side BlackHeart Over-Axle Pipe over the left side muffler outlet. Do not tighten the band clamp.
13. Using (x1) supplied 2.5" band clamp, secure the left side BlackHeart Tailpipe over the over-axle pipe. Do not tighten the band clamp.
14. Using (x1) supplied rubber isolator, secure the left side BlackHeart Tailpipe onto the BlackHeart Hanger Bracket.
15. Align the BlackHeart Exhaust System ensuring there is enough distance between the spare tire and the exhaust pipe (about 0.75" – 1.0") and tighten all band clamps.
16. Connect the battery, start the engine, and check for leaks.

17. Re-check your work.
18. Remove the jack stands and lower the vehicle.
19. After 150 miles, re-check and tighten all bolts.

NOTE: It is normal for the Blackheart System to emit smoke for the first few minutes during break-in period.

LIMITATION OF LIABILITY – DISCLAIMER:

The regulation of emissions production, noise levels, and safety standards is undertaken by the federal government, each of the fifty state legislatures, and by many local municipalities, towns, and counties.

HOOKER™ makes no warranties of merchantability, of fitness for particular purpose, or that its products are approved for general use, or that its products comply with laws, regulations, or ordinances in the state where they may be sold to the ultimate purchaser, the consumer.

Unless expressly stated to the contrary in the catalog, instruction sheet; or price list, the entire risk as to the conformity of any company product in any such state and as to repair should the product prove to be defective or non-conforming, is on the retail purchaser, the buyer, the ultimate consumer, of such product and it is not upon the seller, distributor, or manufacturer.

In this connection, the retail purchaser, the buyer, the ultimate consumer assumes the burden of the entire cost of any and all necessary service, alterations, or repair.

THE FOREGOING STATEMENT LIMITS THE LIABILITY OF THE MANUFACTURER.

California vehicle code, sections 27156 and 38391, prohibits the advertising, offering for sale, or installation of any device, which modifies a vehicle's emission control system, unless exempted, unless otherwise noted. HOOKER™ Headers that have not received an Executive Order (E.O.) exemption from these code sections are not legal for sale or use in California on vehicles originally equipped with catalytic converters, except for racing vehicles, which may never be driven upon a highway. Check with your local authorities to determine if these headers are legal for use in your particular area.

© 2017 Hooker Headers, Inc. All rights reserved.

199R 11272
Date: 3-1-17