



SEAL REPLACEMENT KIT P/N 30-7303QFT

SEAL REPLACEMENT PROCEDURE:

1. Remove (x2) motor bolts (**Figure 1**).
2. Carefully remove pump base making sure the motor stays intact (**Figure 2**). Note the wire location before removal.

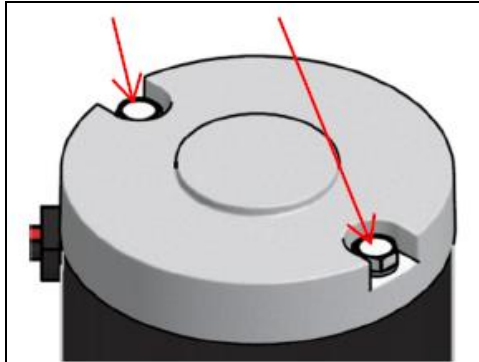


Figure 1

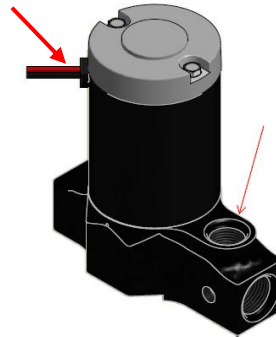


Figure 2

3. Remove the seal from pump base. **Caution:** Do not damage or deform the inside bore diameter.
4. Install the Bullet Assembly Tool (**Figure 4**) over armature shaft.
5. Install the new seal. An arbor press or bench vise is preferred for pressing the seal squarely into bore. Ensure that the seal (**Figure 3**) bottoms out on the pump housing. Lubricate the seal lip with grease or oil to reduce friction on the motor shaft contact surfaces.

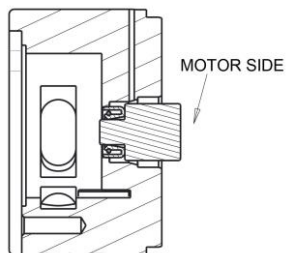


Figure 3

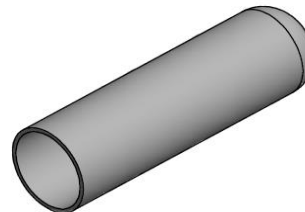


Figure 4

6. Carefully slide pump body over the bullet tool. Remove bullet assembly tool then align pump housing bolts onto motor assembly.
7. Apply a light bead of Loctite® 243 on both motor threads before reassembling.
8. Reassemble rotor, vanes, wear plate, and select matching O-ring seal.
9. Reinstall motor bolts and torque to 25-30 IN-LBS.

Tools Provided in Kit: Bullet Assembly Tool (qty. 1) & Insertion Tool (qty. 1)

199R11328

Revision Date: 2-25-19