



## HOLLEY TALL LS VALVE COVER HARDWARE – SERVICE PARTS

P/N 561-133, Single Pack

P/N 561-134, 8 Pack

### INSTRUCTION SHEET P/N 199R11614

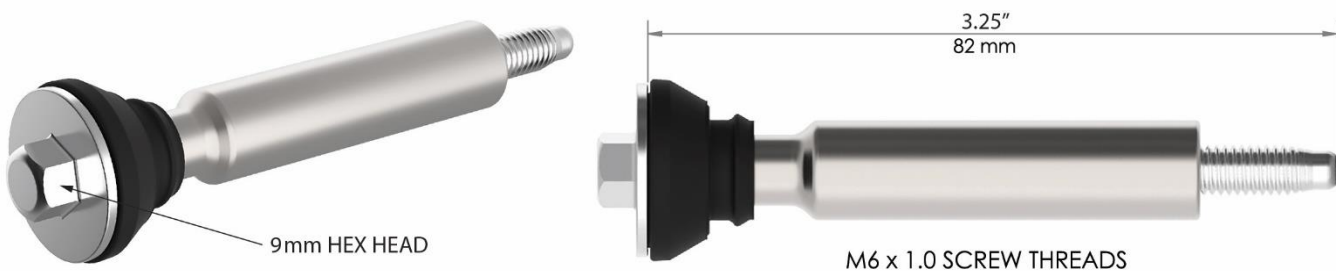
#### APPLICATIONS:

These service parts are a replacement for Holley Tall LS Valve Cover extended length hardware assemblies only. Each hardware assembly consists of an extended length tall LS valve cover bolt, an extended length spacer, and an OEM style LS valve cover grommet. M6 x 1.0 threads - fits all LS1, LS2, LS3, LS6, and LS7 engines.

#### INSTALLATION:

**NOTE:** It is advised to disconnect the battery before doing any work on your vehicle.

1. If using with Holley Tall LS valve covers with integrated coil mounts, it will be necessary to unbolt and remove the existing coils to access the valve cover mounting bolts – this includes disconnecting the spark plug wires and coil harness plugs. If using with Holley Tall LS valve covers without coil mounting provisions, you should be able to access the bolts without any removal processes.
2. Carefully work each hardware assembly (bolt, spacer, and grommet) into the holes on top of your Holley Tall LS valve covers until the rubber grommet is fully seated against the surface of each hole. It may be necessary to remove the valve cover from the cylinder head in order to fully seat each hardware assembly into place.
3. Once the valve cover is back in proper position on the cylinder head, begin to tighten the bolt(s) in an alternating pattern, making sure the valve cover gasket remains seated in the valve cover groove and the bolts are making contact with the threads inside the cylinder head. Evenly torque each valve cover retention bolt to **106 in/lb (9 ft/lb)**.
4. Reinstall any components that were removed or altered during installation. Make sure all electrical connections are secure, and reconnect the battery.
5. Start the vehicle and verify that there are no oil leaks.



**Holley Technical Support**  
1801 Russellville Road  
Bowling Green, KY 42101  
270-781-9741 or 1-866-464-6553  
[www.holley.com](http://www.holley.com)

© 2018 Holley Performance Products. All Rights Reserved. Tous Droits Réservés.

**199R11614**

**Date: 6-18-18**