



**Oil Filter Relocation Adapter for  
1968-2000 Small Block & 1968-1990 Big Block  
Chevrolet Engines**

**P/N 1579ERL**

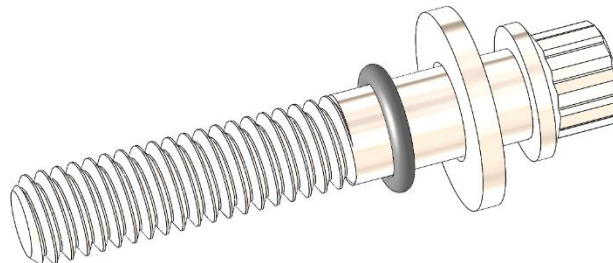


**Packaging Contents**

| <b>Part Number</b> | <b>Description</b>                   | <b>Quantity</b> |
|--------------------|--------------------------------------|-----------------|
| <b>D1579ERL</b>    | SBC REMOTE OIL FILTER ADAPTER        | 1               |
| <b>5R2615</b>      | 12-POINT 5/16-18 X 1-3/4 HARDWARE    | 2               |
| <b>46R1526</b>     | 5/16 WASHER, SMALL OD, CHROME PLATED | 2               |
| <b>527R12</b>      | 2-340 O-RING                         | 1               |
| <b>527R11</b>      | 2-132 O-RING                         | 1               |
| <b>27R913</b>      | 2-011 O-RING                         | 2               |
| <b>199R11759</b>   | INST, OIL FILTER ADAPTERS            | 1               |

**Adapter Assembly:**

1. Place Washer and O-Ring over bolt as shown below.



2. Install the large and small O-rings into their respectable locations on the adapter.



3. Place bolts through holes and prepare the assembled adapter for engine installation.

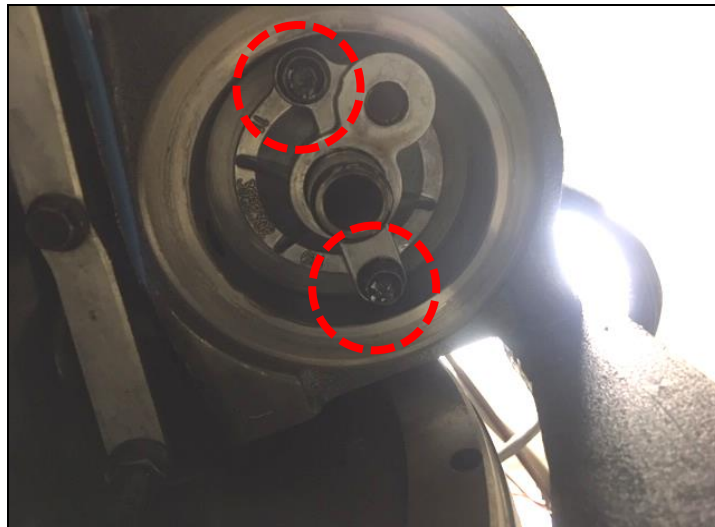


**Adapter Installation:**

1. Ensure engine is cold and safe to work on.
2. Begin by removing the oil filter.



3. Remove the factory oil filter adapter by unscrewing the two highlighted bolts in the below image.



4. Thoroughly clean the area and ensure that it is free of contaminants.



5. Lubricate the O-rings of the Earl's adapter with engine oil and install the adapter to the block.
6. Torque the 12-point bolts to 15.0 FT-LBS in even increments to ensure the adapter is evenly seated to the block surface.

**199R11759**  
**Date: 1-21-19**