



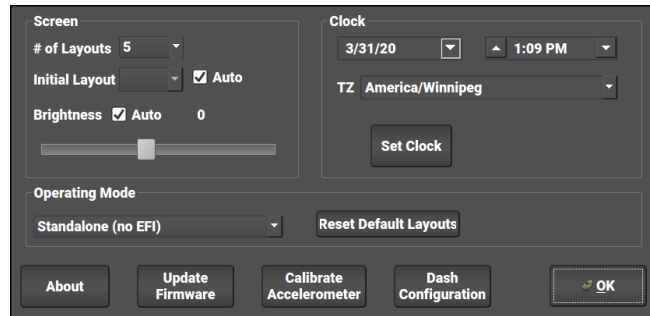
Pro Dash Instructions and Use

Thank you for your purchase. Instructions for Holley Pro Dashes can be downloaded from www.holley.com. These instructions can be downloaded off the main product page for each product, or downloaded at https://www.holley.com/support/resources/#Fuel_Injection. Under the “Holley EFI Digital Dashes”, download the “Pro Dash Complete Manual Set” file. It will contain the following files:

- 12.3” Pro Dash User Manual (199R11581) – For products 553-111 and 553-116
- 12.3” Pro Dash Quick Start Guide (199R11582) – For product 553-111
- 6.86” Pro Dash User Manual (199R11729) – For products 553-112 and 553-117
- 6.86” Pro Dash Quick Start Guide (199R11730) – For product 553-112
- 6.86” and 12.3” Standalone Pro Dash Quick Start Guide (199R12074) – For products 553-116 and 553-117
- Pro Dash Wiring and Sensor Setup (199R12075) – For product 558-456 and all Pro Dash Products

Dash Operating Mode

Although this is covered in the main manuals, make sure that you configure your dash for the application you are using. Press anywhere on the background to call up the side menu, then press Main Menu. Now, press “Configuration” to get the dash configuration screen. Select “Standalone” if using without an ECU. Select the proper ECU if connected to a Holley EFI.



After selecting the application, press “Reset Default Layouts” to install the default screens. This will ensure that the pre-configured screens are loaded.



199R12079

Revision Date: 7-15-20