

## WARNING!

If any part of this installation seems beyond your level of installation experience, please seek the help of a certified professional.

## PART NUMBERS COVERED IN INSTALLATION:

2015-2022 Charger/Challenger Steering Wheel Installation	
CH950-17	Carbon Fiber Steering Wheel
CH950-18	Alcantara Steering Wheel
CH950-19	Carbon Fiber Heated Steering Wheel
CH950-20	Alcantara Heated Steering Wheel

## ITEMS INCLUDED:

- 1 Steering Wheel Core

## TOOLS NEEDED:

- 4mm Allen Key, Small Bladed Screwdriver, or Small Push Pin
- ½" Ratchet
- 10mm Hex Driver
- T20 Torx Bit
- Phillips Head Screwdriver
- Plastic Pry Tool
- Blue Loctite® or Similar Threadlocker

## BEFORE INSTALLING

Park the vehicle with the wheels in the straight forward position and the steering wheel in the 12 o'clock position.

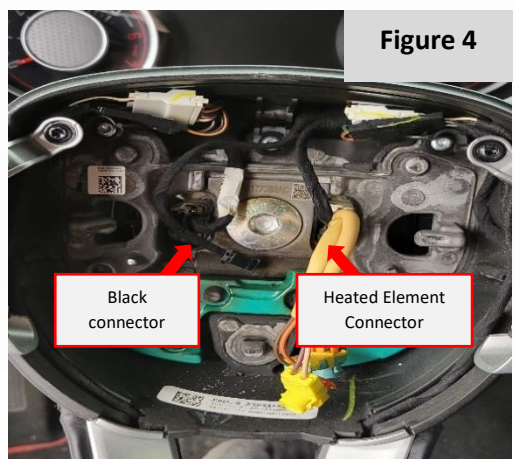
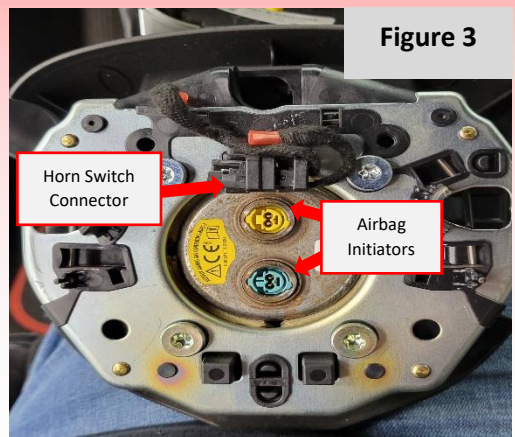
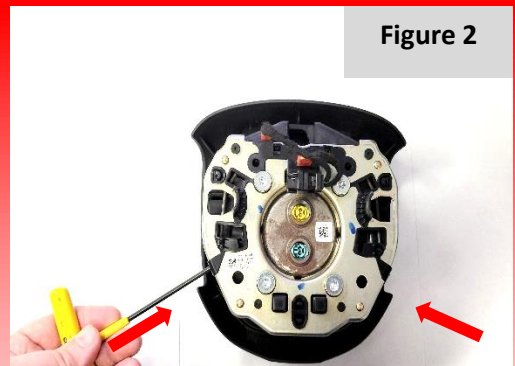
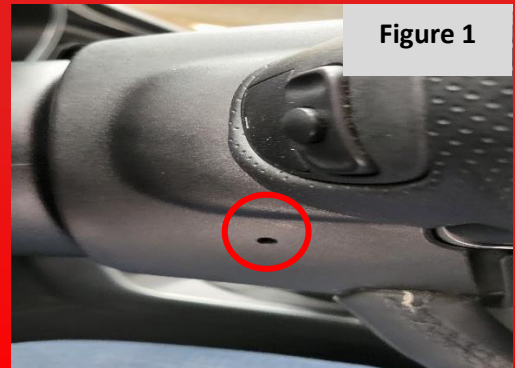
**Disconnect the negative terminal on the battery and wait 20 minutes prior to working on vehicle to prevent any safety concerns regarding the airbag during the installation process.**



## REMOVING THE OEM STEERING WHEEL

1. Insert a small flat screwdriver or a pin punch into the small hole on the Driver's side of the steering wheel referenced in **Figure 1**. Apply pressure inboard and that side of the airbag module will come free. The inboard pressure is pushing a formed wire inside the airbag module to free itself from the steering wheel core. The direction and location of pressure on the airbag module is shown on **Figure 2**.
  2. Repeat this process on the passenger's side hole and press to release the other side of the airbag module on the steering wheel.
  3. Release the (x2) yellow electrical connectors (airbag initiators in **Figure 3**) on the airbag module by pulling up on the orange tabs to free them. Note that the engaging surfaces of these connectors are color coded to prevent error when reinstalling. Then, release the large black connector (horn switch) on the upper side of the airbag module as shown in **Figure 3**. The airbag module can be set aside for later use during the reinstallation.
  4. On the left-hand side of the large 10mm hex bolt, use a small bladed screwdriver to assist in releasing the large black pinned connector (**Figure 4**) that connects the steering wheel core to the steering column.
- NOTE:** For heated steering wheel variants: On the right-hand side of the large 10mm hex bolt in the steering wheel core, use a small bladed screwdriver to release the white connector (**Figure 4**) seated in a clear plastic housing.
5. Using a 10mm hex driver, start removing the large bolt in the center of the steering wheel (**Figure 5**). Stop several threads before completely removing the bolt. Make sure the steering wheel is in the 12 o'clock position, and pull the steering wheel towards you, until the wheel stops on the hex bolt.

Remove the bolt, the large steering wheel dampener, and the steering wheel core along with it. You will need to



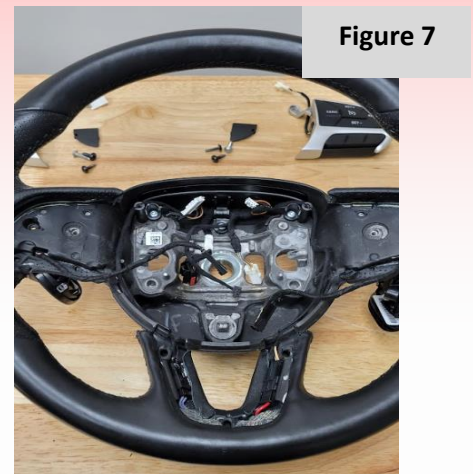
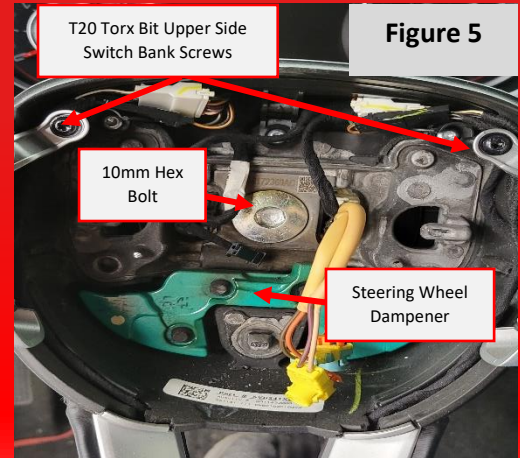
feed the harness with the green and yellow connectors through the core to complete the process.

## DISASSEMBLING THE OEM STEERING WHEEL

6. Set the steering wheel core face up on a soft or protected surface to prevent any damage to the OEM steering wheel core during disassembly.
7. Using a T20 Torx bit, remove the upper T20 Torx bit screw on the right side (**Figure 5**) to start removing the right-hand side switch bank from the steering wheel core.
8. Flip steering wheel core over, and using a thin bladed screwdriver, remove the left-hand side plastic trim cover (**Figure 6**), and the T20 Torx bit screw releasing the switch on the rear of the steering wheel core. There will be another T20 Torx bit screw below the rear switch bank releasing the front switch bank from the core.
9. Flip the steering wheel back over, make note of how the harness is routed within the steering wheel core for reassembly and which connectors belong to their perspective pigtailed on the harness. Begin disconnecting the pigtailed connecting the front and rear switch banks to the steering wheel core.

Move the front switch bank out of the way and feed the pigtail for the rear switch through the corresponding hole to remove it from the assembly. Set aside for reinstallation into the new wheel.

10. Using the same process used in *Step 7-9*, release the front and rear controls/switches on the opposite side of the core. Reference **Figure 7** for how the layout of the wiring within the wheel should look at this point (Heated Variant shown).



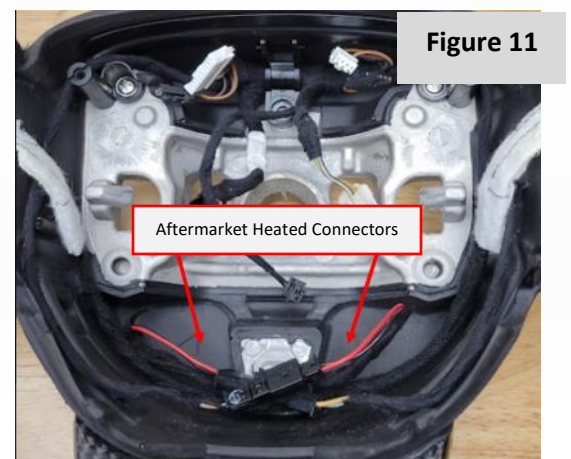
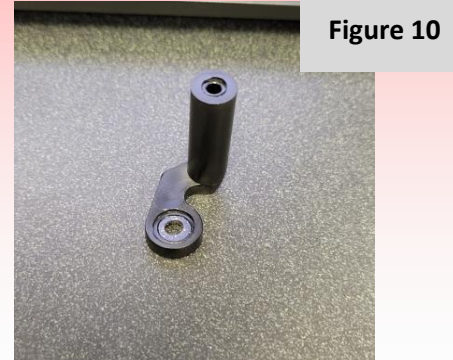
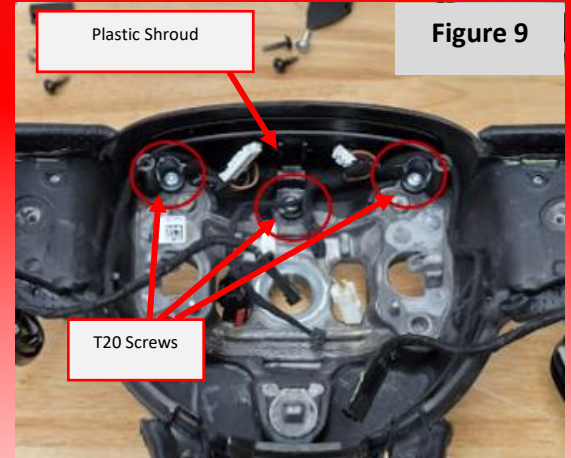
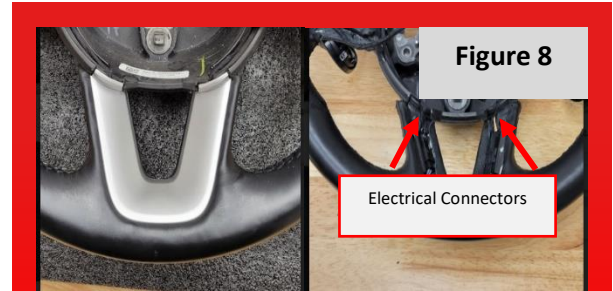
11. **FOR HEATED STEERING WHEEL VARIANTS:** Remove the lower “V” shaped bezel with a plastic pry tool or screwdriver, prying at the top portions of the “V” freeing the pins holding the piece onto the steering wheel core. ***(Figure 8)***.

Unplug both electrical connectors on the left and right-hand side by depressing the tabs. Lightly pull the wires free from the trough they sit in ***(Figure 8)***. The “V” Shaped bezel will not be reused in the aftermarket core.

12. Remove the (x3) T20 Torx bit screws on the upper part of the steering wheel core ***(Figure 9)*** and pull the plastic shroud piece shown below free with the harness along with it. Note how the harness routes around the top of the studs that the front switch bank mounts to.

#### REASSEMBLING THE AFTERMARKET STEERING WHEEL

13. Place aftermarket steering wheel core on soft surface as to not mar carbon/leather surfaces.
14. With the steering wheel face up and using a Philips head screwdriver, remove the two studs on the upper sides of the aftermarket steering wheel. **NOTE:** SRT Models will use (x2) standoff studs ***(Figure 10)*** preinstalled on the aftermarket core instead of the long shroud referenced above in ***Figure 9***.
15. Insert the large green steering wheel dampener ***(Figure 5)***, and then insert the harness/upper shroud in the upper portion as it was on the OEM steering wheel core ***(Figure 7)*** with (x3) T20 Torx head screws. Torque to 44in-lb (5Nm).
16. **FOR HEATED STEERING WHEEL VARIANTS:** If the heated option is applicable on your steering wheel, there will be extra harness to route coming off of the left and right-hand side of the aftermarket steering wheel core ***(Figure 11)***. Reconnect the harness to the existing connectors on the steering wheel and secure the harness in the troughs along the edge of the rubber portion of the core where applicable.
17. Replace both the front switch banks on the new steering wheel core, fastening them with their respective T20 Torx bit screws ***(Figure 5)***. Torque to 44in-lb (5Nm). Reroute the harness and attach to their connectors on the small harness within the steering wheel core.



18. Flip steering wheel so the back is facing up. Take the Rear switch banks and feed in their corresponding wires into the new steering wheel and connect them to the upper harness within the core (**Figure 7**).
19. Fasten the (x1 per side) T20 Torx bit screw connecting the front switch banks to the arms of the core (**Figure 6**), followed by the (x1 per side) T20 Torx bit screws connecting the rear switch banks to the steering wheel core. Torque T20 screws to 44in-lb (5Nm). This completes the assembly of the aftermarket steering wheel core.

#### INSTALLING THE AFTERMARKET STEERING WHEEL

20. Bring steering wheel back into vehicle, feed the clockspring wires into the steering wheel core. Reconnect connectors into clockspring for switches (*including right side connector for heated variants*) (**Figure 4**).
21. Confirm steering wheel is at 12 o'clock position and reinsert wheel onto the steering column. Note the position of the splines on the steering column and the steering wheel core. There are detentions/keyways in them to confirm correct placement.
22. Reinsert the large 10mm hex bolt back into the steering column and torque to 63ft-lbs (85 Nm). Blue Loctite® or similar thread locking compound is suggested when reinstalling this particular bolt.
23. Take the airbag module and reconnect the yellow and green connectors (**Figure3**), making sure to secure the orange safety tabs. Then, reclip in the black connector on the upper portion of the airbag module.
24. Square up the airbag module to the steering wheel and slide it on until both sides click. Note that this will take some force. Feel around the wheel and make sure the gaps around the airbag module are even. If they are not, the horn may not be seated correctly. Refer to *Step 1/2* to remove the airbag again and reseal.
25. Reconnect the battery and confirm operation of horn, switches, *and heated wheel if applicable*.

**Technical Support**

**Toll-Free Phone: 1-866-464-6553**

**Phone: 1-270-781-9741**

**For online help, please refer to the Tech Service section of our website: [www.holley.com](http://www.holley.com)**

© 2022 Holley Performance Products, Inc. All rights reserved. Tous Droits Réservés.

**199R12339**

**Revision Date: 9-7-22**