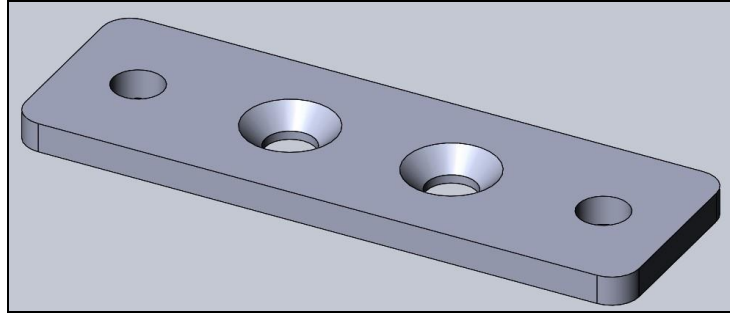




## BHS5181 10L80/90 Car Transmission Mount Adapter Installation Instructions



Thank you for choosing to use HOLLEY™ swap products as part of your LS/LT Swap project. This transmission adapter is part of the most comprehensively engineered system of mounting components, headers, and exhaust systems available for this application. Please read these instructions thoroughly before attempting installation.

### **PRE-INSTALLATION CONSIDERATIONS:**

- Requires the use of a urethane or rubber mount – HOOKER 71223029HKR (black) 71223030HKR (red) or equivalent required

More LS/LT engine performance components, such as EFI fuel control systems, fuel filters, fuel pumps, plumbing hose/fittings, intakes, and valve covers can be found at [www.holley.com](http://www.holley.com).

### **BEFORE BEGINNING:**

Check that the hardware package includes the following:

Qty.	Description
2	M10 x 25mm Bolts
2	M10 Flange Nuts
2	M10 x 25mm FHCS

If you are missing any hardware, please contact Technical Service at 1-866-464-6553 or 270-781-9741.

### **INSTALLATION:**

1. Using a 10L80/90 car transmission and the M10 FHCS, first install the adapter to the tail housing of the transmission through the inward countersunk holes.
2. Install rubber transmission mount with supplied hardware in the outer holes and tighten.
3. Install your crossmember and tighten.
4. Your trans adapter install has now been completed.

### **LIMITATION OF LIABILITY – DISCLAIMER:**

HOLLEY™ makes no warranties of merchantability, of fitness for particular purpose, or that its products are approved for general use, or that its products comply with laws, regulations, or ordinances in the state where they may be sold to the ultimate purchaser, the consumer.

Unless expressly stated to the contrary in the catalog, instruction sheet; or price list, the entire risk as to the conformity of any company product in any such state and as to repair should the product prove to be defective or non-conforming, is on the retail purchaser, the buyer, the ultimate consumer, of such product and it is not upon the seller, distributor, or manufacturer.

In this connection, the retail purchaser, the buyer, the ultimate consumer assumes the burden of the entire cost of any and all necessary service, alterations, or repair.

© 2022 HOLLEY, Inc. All rights reserved. Tous Droits Réservés.

**199R12410**

**Date: 7-14-22**