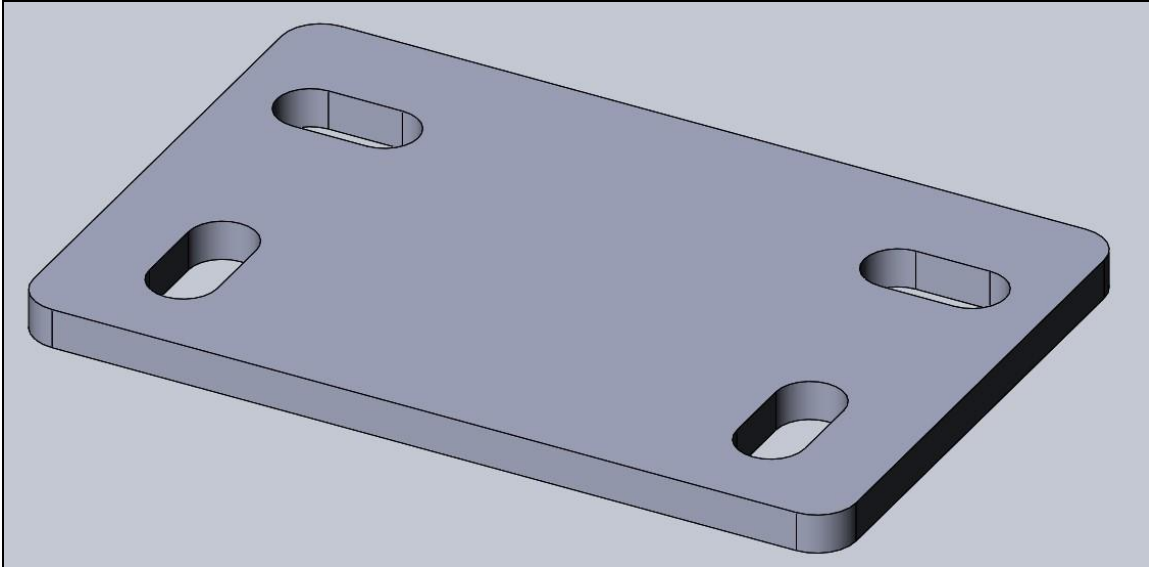




**1978-88 GM A/G Body  
BHS5182 6L80 8L90 10L80/90 Transmission Mount Adapter  
Installation Instructions**



Thank you for choosing to use HOLLEY™ swap products as part of your LS/LT Swap project. This transmission adapter is part of the most comprehensively engineered system of mounting components, headers, and exhaust systems available for this application. Please read these instructions thoroughly before attempting installation.

**PRE-INSTALLATION CONSIDERATIONS:**

- Requires the use of a urethane or rubber mount – Hooker 71223029HKR (black) 71223030HKR (red) or equivalent required
- Designed to be used with Hooker 12644HKR-1 swap crossmember and Holley BHS5180, BHS5179 engine mounts
- If a 10L80/90 car transmission is being used, mount adapter BHS5181 will also be needed along with the ¼” spacer included with the crossmember to correct mounting pad height and bolt pattern.

More LS/LT engine performance components, such as EFI fuel control systems, fuel filters, fuel pumps, plumbing hose/fittings, intakes, and valve covers can be found at [www.holley.com](http://www.holley.com).

**BEFORE BEGINNING:**

Check that the hardware package includes the following:

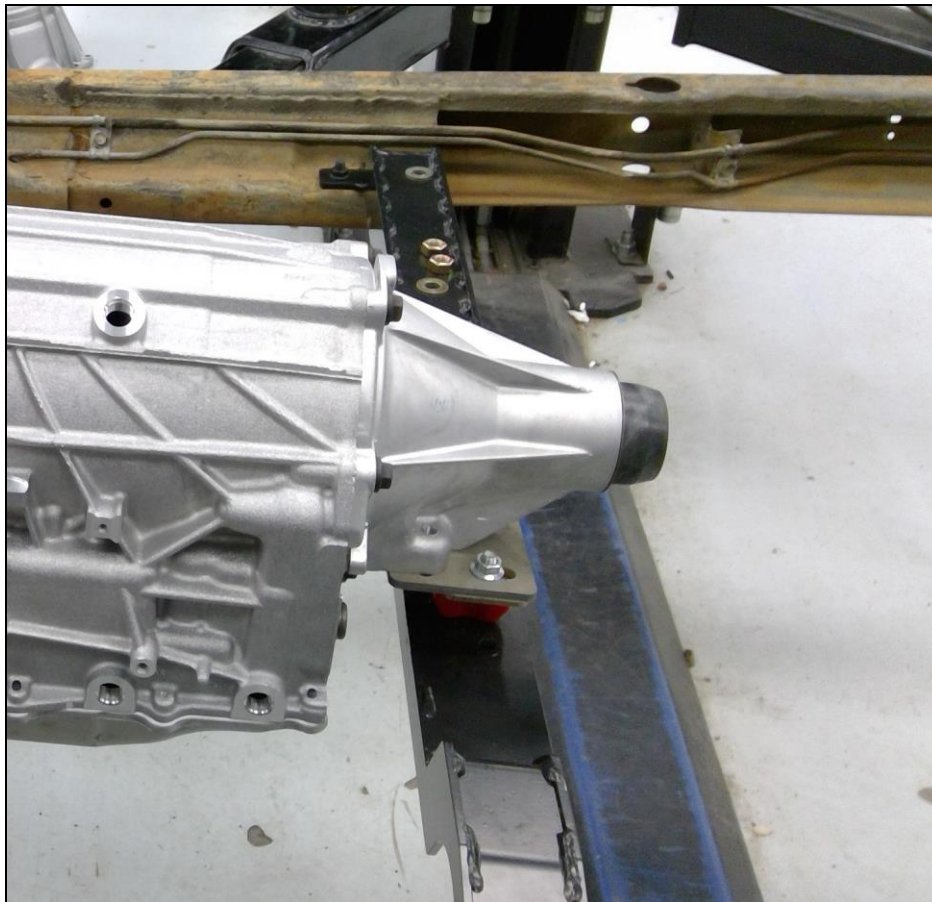
Qty.	Description
4	M10 x 25mm Bolts
2	M10 Flange Nuts

If you are missing any hardware, please contact Technical Service at 1-866-464-6553 or 270-781-9741.

**INSTALLATION:**

1. Using a 6L80 8L90 10L80/90 transmission, install the adapter bracket using the supplied hardware in place of the original transmission mount and tighten. The adapter will be installed with the front to rear slots facing the rear of the vehicle. If a 10L80/90 car transmission is being used, mount adapter BHS5181 will also be needed along with the ¼” spacer included with the crossmember to correct mounting pad height and bolt pattern. 6L80 will need 11/16” spacer PN:71223015HKR (**Figure 1**).
2. Install rubber transmission mount as seen in **Figure 1** with supplied hardware and tighten.
3. Install your crossmember and tighten.

4. Your trans adapter install has now been completed and ready to be outfitted with Hooker Blackheart exhaust system that is specifically designed for use with this crossmember.



**Figure 1**

**LIMITATION OF LIABILITY – DISCLAIMER:**

HOLLEY™ makes no warranties of merchantability, of fitness for particular purpose, or that its products are approved for general use, or that its products comply with laws, regulations, or ordinances in the state where they may be sold to the ultimate purchaser, the consumer.

Unless expressly stated to the contrary in the catalog, instruction sheet; or price list, the entire risk as to the conformity of any company product in any such state and as to repair should the product prove to be defective or non-conforming, is on the retail purchaser, the buyer, the ultimate consumer, of such product and it is not upon the seller, distributor, or manufacturer.

In this connection, the retail purchaser, the buyer, the ultimate consumer assumes the burden of the entire cost of any and all necessary service, alterations, or repair.

© 2022 Holley, Inc. All rights reserved. Tous Droits Réservés.

**199R12411**

**Revision Date: 12-14-23**