

10 AN ORB ROLLOVER VALVE

Part Number: 26-509



Installation Instructions:

WARNING! This instruction manual must be read and fully understood before beginning installation. If the instructions are not fully understood, installation should not be attempted. Failure to follow the instructions may result in subsequent system failure and could result in serious personal injury and/or property damage.

For the safety and protection of you and others as well as your vehicle, only a trained mechanic having adequate fuel system experience should perform the installation, adjustment, and repair.

Holley's 10 AN ORB Rollover Valve mounts in the fuel cell and helps minimize and/or prevent fuel from coming out the vent port when a vehicle rolls over and is flipped upside down in case of an accident. During normal operating conditions, the valve allows the fuel cell to breathe out the vent port.

Features:

- Low-profile design
- Main body made of 6061-T6 Aluminum
- Anodized Type II - Brite Dip Black
- Stainless Steel sphere ball and snap-ring
- Comes apart easily to be cleaned/serviced
- Suitable for pump gas, E85, and methanol

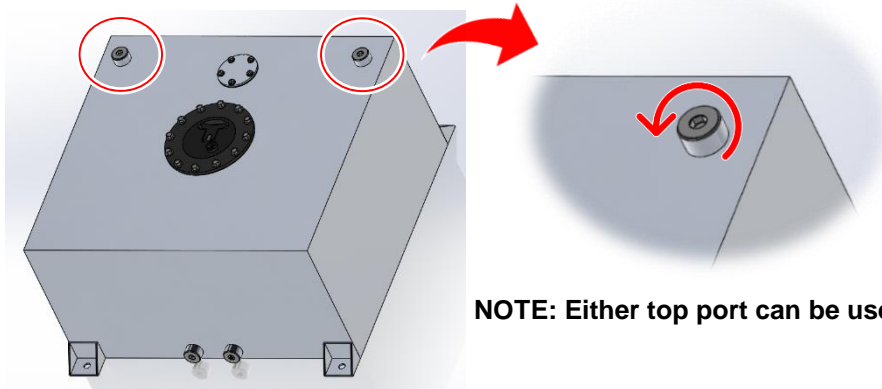
Tools Required:

- 3/8" Hex key
- AN wrench (P/N: 230400ERL)
- Earl's Assembly Lube (P/N: 184004ERL)



1. Removing -10AN Plug

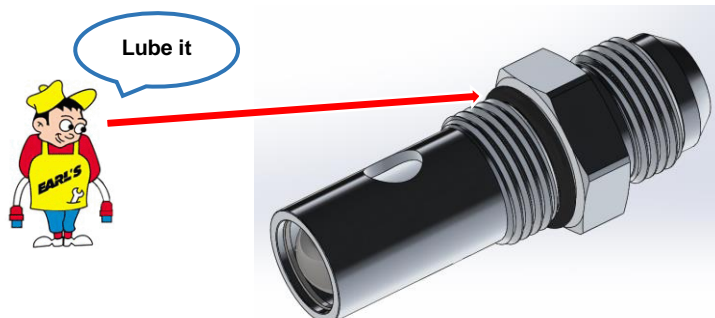
- Remove one -10AN ORB Plug with **3/8" Hex key** - turn counter-clockwise to loosen.



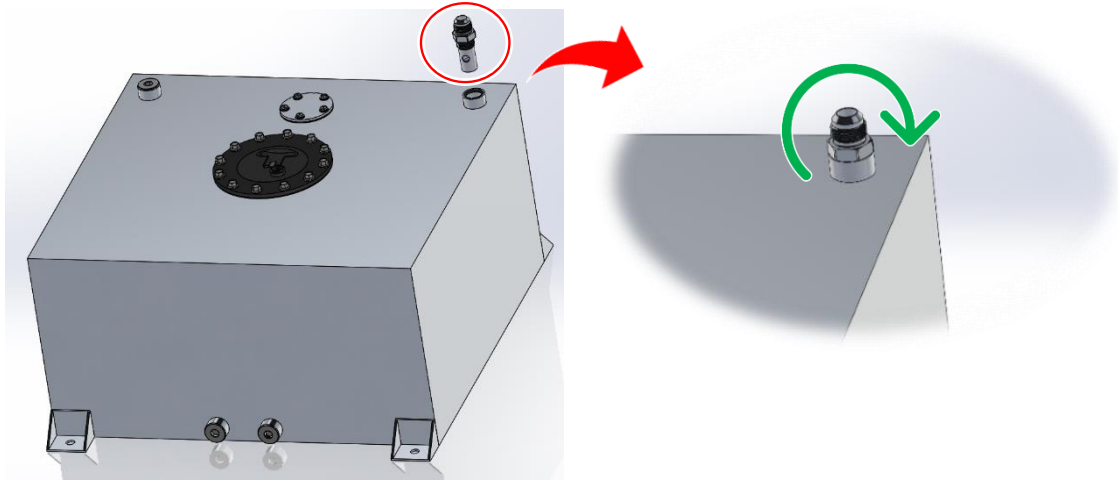
NOTE: Either top port can be used for vent.

2. Installing Rollover Valve

- Lubricate Rollover Valve's O-ring with **Earl's Assembly Lube** or equivalent.



b. Install Rollover Valve as shown by hand first, then use **AN wrench** - turn clockwise to tighten.



WARNING! While undertaking any work involving the fuel system, it is particularly important to remember one of the very basic principles of safety: fuel vapors are heavier than air and tend to collect in low places where an explosive fuel/air mixture may be ignited by any spark or flame resulting in property damage, personal injury, and/or death. Extreme caution must be exercised to prevent spillage and thus eliminate the formation of such fuel vapors. All work involving this product and the fuel system generally **MUST** be performed in a well-ventilated area. Do **NOT** smoke or have an open flame present near gasoline vapors or an explosion may result.

Holley® Performance Products, Inc.
1801 Russellville Road
Bowling Green, KY 42101

Technical Support: 1-866-464-6553
Phone: 1-270-781-9741
www.holley.com

© 2022 Holley Performance Products, Inc. All rights reserved. Tous Droits Réservés.

199R12462
Date: 11-7-22