

V-Net Four Channel Event Module

Part Number: 230-VM-4DIGIN

Module Configuration Setup:

Module Type: IO_DIGIN

Serial Number:

Input #1: _____ **V-Net ID:** _____ **Trigger Level:** GROUND

Logger Sample Rate: 50/second **V_Net Update Rate:** 50/second

Input #2: _____ **V-Net ID:** _____ **Trigger Level:** GROUND

Logger Sample Rate: 50/second **V_Net Update Rate:** 50/second

Input #3: _____ **V-Net ID:** _____ **Trigger Level:** POWER

Logger Sample Rate: 50/second **V_Net Update Rate:** 50/second

Input #4: _____ **V-Net ID:** _____ **Trigger Level:** POWER

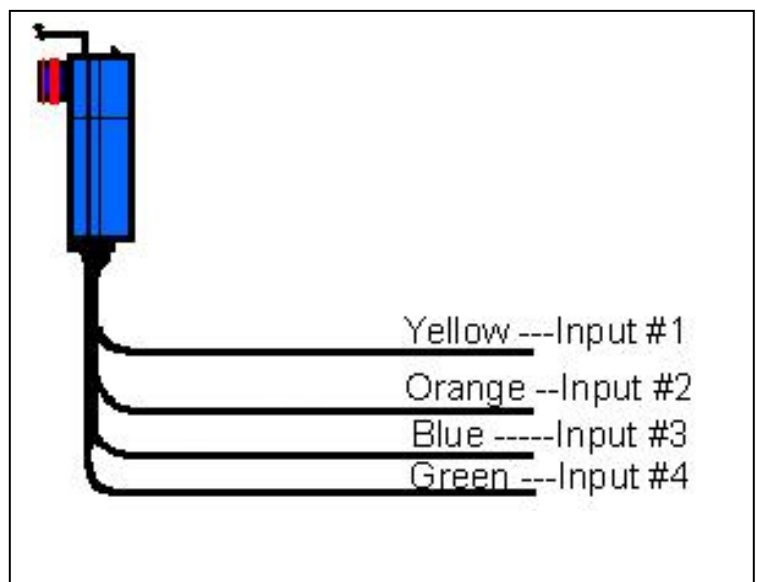
Logger Sample Rate: 50/second **V_Net Update Rate:** 50/second

Module Description:

The 4 channel digital input module contains four channels intended to record event information. An event can be anything you wish to record that has two states, ON or OFF. Inputs 1 and 2 are configured to trigger when the wire is shorted to ground. Inputs 3 and 4 are configured to trigger when the wire is connected to power. **DO NOT CONNECT INPUT WIRES 1 OR 2 TO POWER. DOING SO WILL DAMAGE THE MODULE.**

Module Installation:

The V_Net Four Channel Event Module can be inserted at any location in the V_Net data bus cable in your vehicle. Select a location where the connector module can be mounted safely. Avoid mounting near heat sources and high voltage ignition wires. The connector module must be mounted in a location the temperature does not exceed 185 degrees or the module will be damaged. After you have connected the module into the V_Net cable and have mounted the module, connect the individual wires from the module to the event inputs as shown in the diagram to the right. Inputs 1 and 2 are configured to trigger when the input wire is shorted to ground. Inputs 3 and 4 are configured to trigger when the input wire is connected to power. If you are using a Racepak shift light module you may connect input #3 or #4 directly to the blue wire from the shift light module to record the shift light operation.



Software Setup and Module Configuration

The module has been factory configured as described in the setup box located at the top of this page. If you want to adjust any of the setting you will need to perform the following steps. Connect the data logger to your PC using the units serial interface cable (See your units instruction manual for details). Next start the RacePak DataLink program. If you selected your car configuration file as the default configuration file, the file will be opened and the file tab for the car configuration file will be selected automatically. If it is not, open your car configuration file by selecting the **Open Car Configuration** menu item located in the **Files** main menu selection.

Next apply power to your onboard system, wait 10 seconds and select the **Read VNET Config** menu item located in the **Edit** main menu selection. The DataLink program will read in the configuration of your system. If everything works properly, four channel buttons will appear in the configuration file representing the four channels in the module. The buttons will be captioned as listed in the configuration box as the start of this sheet.

To edit the setup parameters on this sensor module, position the mouse cursor over the channel button and click the right mouse button. The VNET Input Channel Parameters dialog box will be displayed.

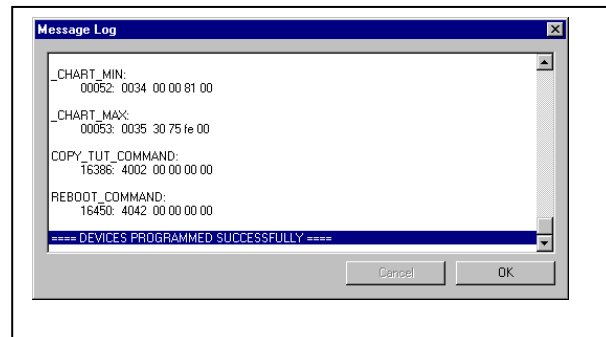
Locate the text box labeled **Four Channel Digital Input Setup Instructions**. This text box provides online instructions for modifying the setup of this module. Read the instructions and modify the setup as desired. (Please note the scroll bars located on the left- hand portion of the text box are used to scroll through the instructions).

Sending the Configuration to the Module:

When you have finished editing the configuration on your PC, you will need to send the information to the module. Be sure the serial interface cable is connected to your data logger and power is applied to the system. To send the information position the mouse cursor over the **Send Configuration** button and click the left mouse button. The progress box as shown below will be displayed.



When finished sending the message “**Device Programmed Successfully**” should be displayed at the bottom of the progress box. If you receive an error message, turn power to the system off and then back on and repeat the send configuration process. If problems persist, check the troubleshooting section in your manual and then contact RacePak.



Save your configuration file and update the Module Configuration Setup Box on the front of this worksheet with the new setup configuration.

IMPORTANT:

Save this Installation Worksheet in your System Manual in Appendix V. This worksheet is part of your system documentation. You may need this worksheet when modifying or trouble shooting your system.