




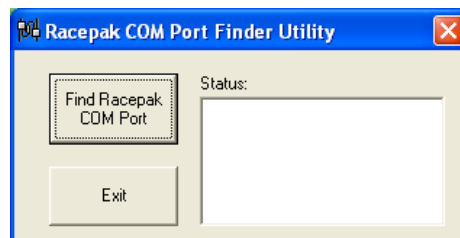
## !! IMPORTANT INFORMATION - PLEASE READ !!



### IF YOU ARE USING A USB TO SERIAL PORT ADAPTOR PLEASE FOLLOW THE SETUP PROCEDURE OUTLINED BELOW.

Many newer PC do not have a built-in RS-232 serial port. An RS-232 port can be identified as having a 9 pin male connector. The absence of a built-in RS-232 serial port will require the use of a USB to serial port adaptor in order to configure and/or upload data from the logger. These adaptors require you to configure them before they will properly communicate with your Racepak data logger. Also, you must install the DataLink software before performing the following configuration procedure and be using Windows XP or 2000 operating system.

- 1) The first and most important step is to follow the manufactures instructions on properly installing the adaptor. Pay particular attention to any Windows device drivers that may be required. These drivers are typically provided on a floppy disk or CD included in the package with the serial port adaptor.
- 2) After you have properly installed the serial port adaptor the next step is to find which COM port number windows has assigned to the adaptor. Connect the Racepak serial cable between the adaptor and your data logger then turn the power on to the data logger.
- 3) Click on the  button in lower left hand corner of your screen.
- 4) Click on  then select  Racepak COM Port Finder Utility
- 5) This will start a program that will automatically determine and configure the proper DataLink COM port number. Click on the "Find Racepak COM Port" button and follow the on screen instructions.





**The serial cable must be removed from the data recorder before attempting to take a recording. The logger will not record data if you leave the serial cable connected while making a run.**

The serial cable is used only when reconfiguring the data logger, uploading recorded data to your computer or monitoring in real time (Telemetry).