



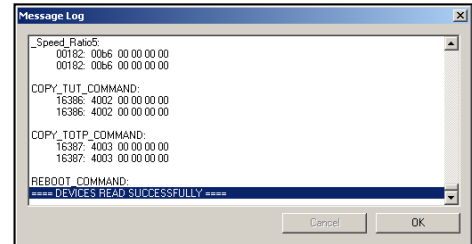
## 280-KT-USMRZR

### Instruction sheet addendum

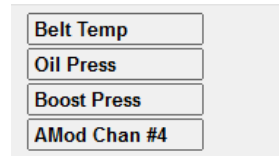
Please note that the 280-KT-USMRZR kit utilizes the standard Racepak USM (P/N 230-VM-USM). For complete instructions on specifications and programming for the USM module, refer to the instruction guide accompanying this kit.

### Adding USM Sensor Channels to DatalinkII Software

1. Connect the Racepak serial communication cable between your PC and the data logger
2. Power up the data logger
3. Open the DatalinkII software and the Configuration file using the command File / Open Car Configuration from the main menu
4. Select Edit, then Read Vnet Config located in the main menu selection
5. When selected a Message Log dialog box will be displayed and the read Configuration process will be started. When completed the following Message Log dialog box will be appear as shown
6. The message Devices Read Successfully should appear at the bottom of the dialog box indicating the read was successful.
7. Select OK
8. Select Save in the DatalinkII Main Menu



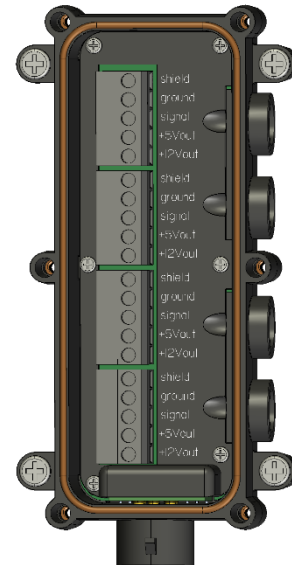
This action will automatically add the four sensor channels from the USM, to the Configuration file, as shown. When using the USMRZR, the channels are programmed by default Belt Temp, Oil Pressure, Boost Pressure and AMod Chan #4, which can be programmed for any traditional USM input.



### Connecting Sensor Cable to USM Terminal Strip

After connecting the sensor cables to the sensors, we can now terminate the sensor cables at the USM terminal strip. Remove the 6 screws from the lid of the USM. Inside are four terminal strips, corresponding to 1-4 on the numbered housing lid and channels 1-4 in the setup software. Strip approximately .250" / .635cm of jacket from each sensor wire.

1. Determine the power requirements of the sensor (none, 5V or 12V)
2. Insure the strain relief is slid over the sensor cable, then loosen the appropriate screws on each terminal strip
3. Connect the appropriate sensor wires and tighten each terminal strip wire screws.
4. Install the strain relief cable nut and bushing
5. Reinstall the housing lid and screws.



**Signal**  
Signal from sensor to data logger

**+5V or +12V**  
Power for sensor

**Ground**  
Sensor ground / earth

**Shield**  
Sensor cable shield wire (if cable is so equipped)

Channel	1	2	3	4
<b>Name</b>	Belt Temperature	Oil Press	Boost Press	
<b>V-Net ID</b>	Clutch Temp x383	Oil Pressure x204	Boost Pressure x202	
<b>Sensor</b>	810-TR-BELT	810-PT-0150GVT	810-PT-0075GVT	
<b>Power</b>	Not required	+5V Power (red)	+5V Power (red)	
	Signal (clear)	Signal (clear)	Signal (clear)	
	Ground (black)	Ground (black)	Ground (black)	