



INSTALLATION INSTRUCTIONS

MSD Powersports Launch Master 4-Cylinder, Two Coil, Wasted Spark PN 4351

Parts Included:

1 - Launch Master, PN 4351

1 - Harness

1 - Velcro strip

1 - Parts bag

Note: The Launch Master is a launch rpm limiter that will not provide nor modify any over-rev protection. The stock high rpm rev-limiter will still be active.

The MSD Powersports Launch Master is a universal launch rpm limiter. The Launch Master will provide consistent launches and quicker 60-foot times. RPM adjustments are made via two rotary switches located on the harness side of the unit. The adjustment range is from 1,800 to 9,900 rpm, in 100 and 1000 rpm increments. An LED will illuminate when the launch rev limit is active.

Note: It is recommended to have the service manual for your motorcycle.

MOUNTING

The Launch Master can be mounted in any position but keep in mind to mount it so the rotary dials are accessible for adjustments. A section of Velcro is supplied for mounting. Double sided tape or tie wraps are also recommended depending on the final mounting area. Before mounting the unit, confirm that the wiring harnesses reach their connections.

WIRING	
4-WIRE CONNECTOR	
TAN (2)	Signal Connections (Negative side of coils).
RED	12-Volt Connection through this single Red wire (Positive side of coils).
BLACK	Connects to a good engine ground or the negative battery terminal.
2-WIRE CONNECTOR	
BLUE	Activation Wire. When grounded, the launch feature will be active. The harness is supplied from MSD for a ground activation.
WHITE/BLUE	Activation Wire. When switched to 12 volts, the launch feature will be active. (The position of the blue wire on the connecting 3-pin harness must be moved.) Note: Never connect both the Blue and White/Blue wires at the same time. Note: The stock clutch lever or aftermarket clutch lever with momentary switch can be used to activate the Launch Master.

LED

The built-in LED will illuminate when the Launch Master is activated.

Note: Refer to your service manual for coil accessibility.

1. Locate stock coils.
2. The two tan wires connect to the negative side of the stock coils via butt connectors or ring lugs supplied with PN 4351.
3. The red wire connects to one of the positive leads for the stock coil.
4. Turn the power on at this point to test to see if the wiring is correct. Ground the Blue launch wire. If the LED turns on with the Blue wire grounded, the correct connections were made. If the LED does not turn on, check the connection to the stock coils.

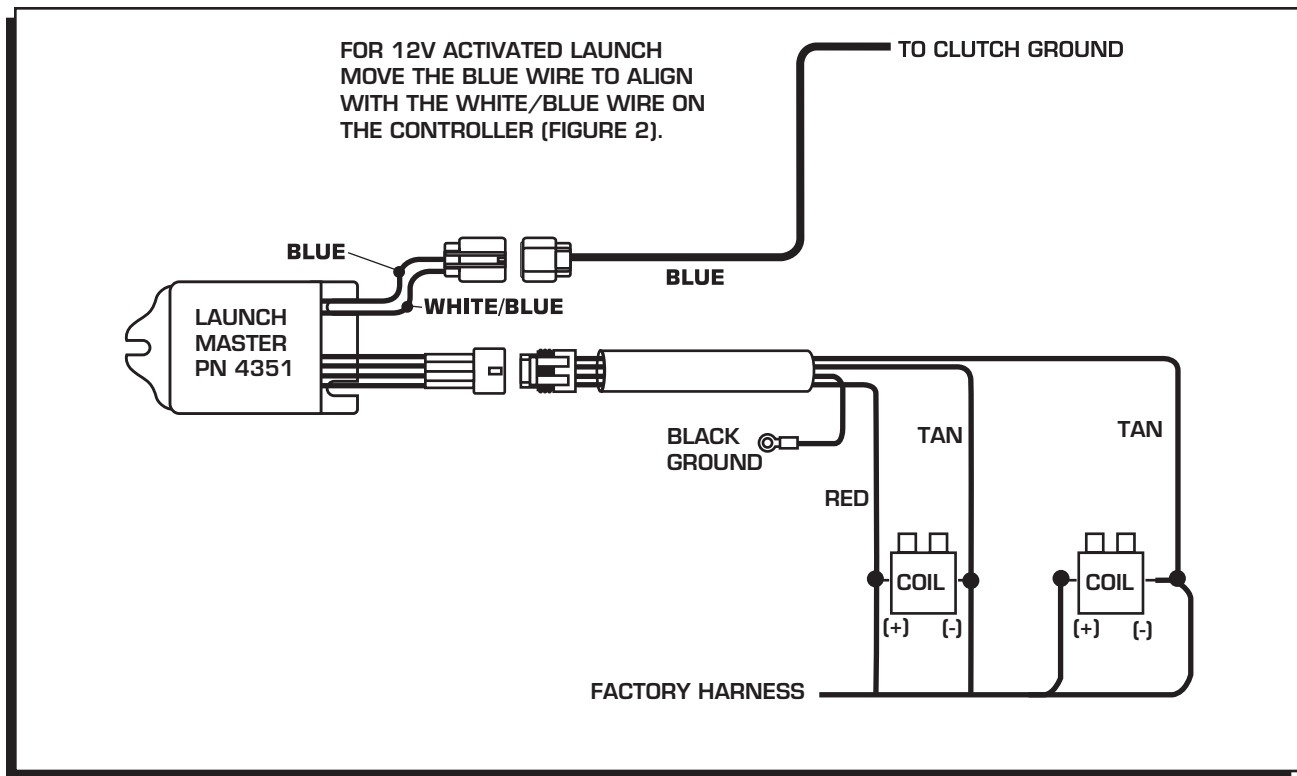


Figure 1 Wiring the Launch Master.

CONNECTING THE LAUNCH WIRE

Most motorcycles have a clutch switch that provides a ground when the clutch is engaged. This is the default wiring of the Launch Master. If you prefer to activate the launch limit with 12 volts, disassemble the 2-pin connector and move the Blue wire to align and connect with the White/Blue wire (Figure 2).

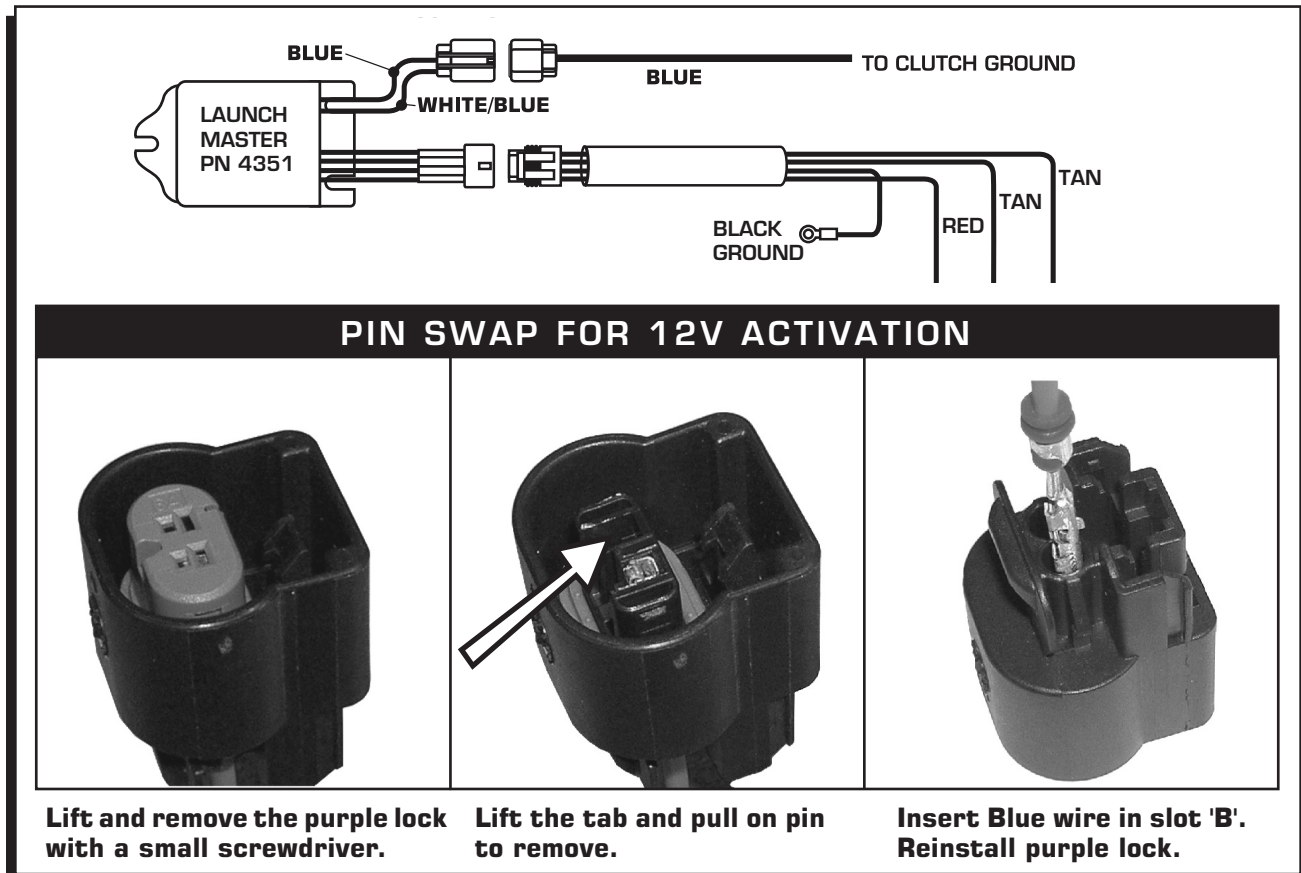


Figure 2 Wiring the Launch Activation Wire.

CONFIRM INSTALLATION

With the power ON, activate the clutch switch. When everything is correct, the LED will illuminate. To verify the rpm, set the limit at a lower rpm, such as 3,000, and test the system.

If the engine has trouble starting or running, check the following:

- Ground connection
- Coil connections

Note: Due to safety controls on some applications, the launch rpm limit may be activated when the bike is in neutral or when the kickstand is down.

