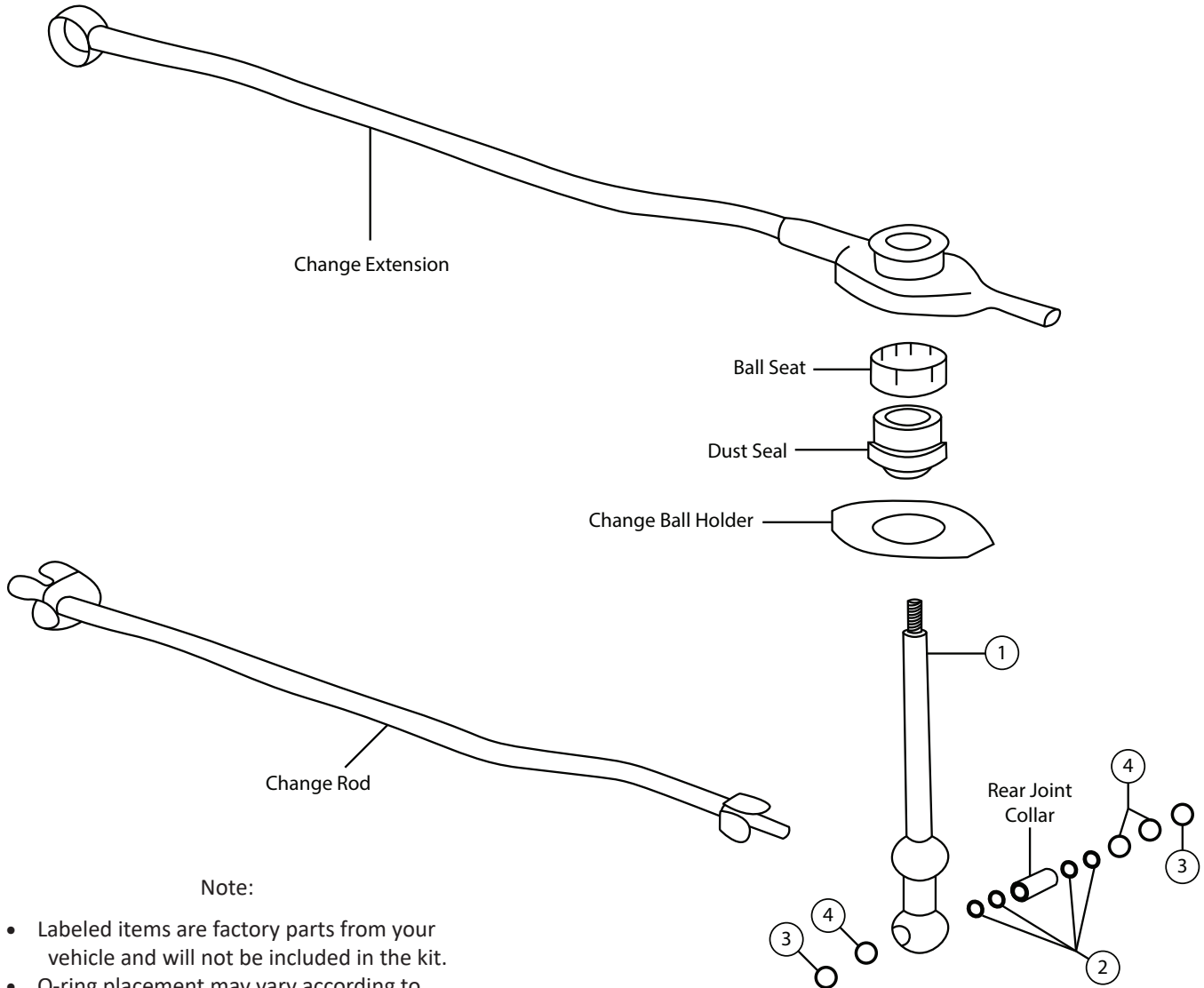




Installation Instructions
45047 (CURVED)
45075 (STRAIGHT)
 1990-01 ACURA INTEGRA, 1988-00
 HONDA CIVIC, 1988-91 HONDA CRX,
 1993-97 HONDA DEL SOL
 See "Applications" tab on this products web page for
 complete vehicle & model year fitment.



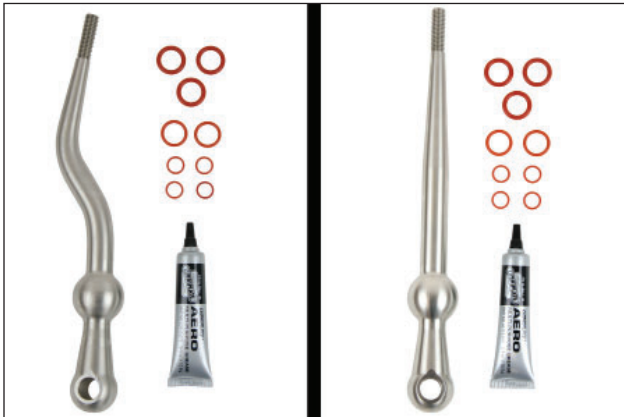
Note:

- Labeled items are factory parts from your vehicle and will not be included in the kit.
- O-ring placement may vary according to vehicle. Check step 22 for o-ring install on your application.

ITEM #	PART #	DESCRIPTION	QTY.
1- (Straight) (Curved)	4100434-00 4100860-12	Stick, Honda Shifter	1
2	8901149-00	-012 S-70 (3/8" x 1/2") O-Ring	4
3	8901150-00	#-113-S-70 (5/16" x 3/4") O-Ring	2
4	8901151-00	#-207-S-70 (5/16" x 13/16") O-Ring	3
5	4100448-00	Grease Packet	1

OVERVIEW:

This B&M Short Throw Shifter has been designed to work on most Acura and Honda models listed that are equipped with manual transmissions; it is engineered to greatly reduce shift throw and improve shifter feel.



1. Please take a moment to read and understand these instructions before installing your purchased performance kit. This kit contains all parts necessary to install shifter in applicable vehicles listed. Depending on your application, you may end up with two extra o-rings.

NOTE: Please inventory all parts before starting the installation process and call our tech line to report any missing parts. This will help avoid potentially stranding your vehicle until any missing replacement parts arrive.

WARNING:

Avoid serious burns! Allow vehicle time to cool completely before handling any engine components.

DISASSEMBLE STOCK COMPONENTS:



2. Unscrew stock shift knob.
3. Raise vehicle up on a hoist or rack to working height. If you don't have access to a hoist or rack, support vehicle with jack stands.



4. If you can't easily access your change rod, unhook rubber exhaust hangers near catalytic converter and carefully lower exhaust pipe.



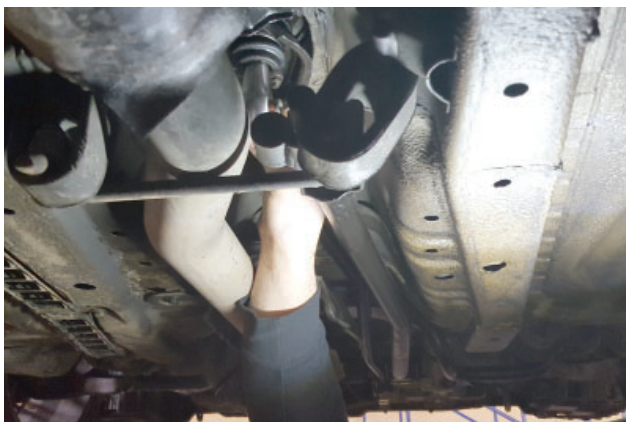
5. Remove nut and bolt attaching shift lever to change rod. Carefully lower change rod and allow it to hang out of the way.



6. Remove (x2) bolts from rear extension mount. Allow change extension to drop slightly (but still be attached to shift lever).



7. Remove bolt holding front of change extension to transmission.



8. Carefully pull change extension and shift lever from vehicle.



9. Place change extension assembly on a clean, flat surface then clean excess grease off of parts.



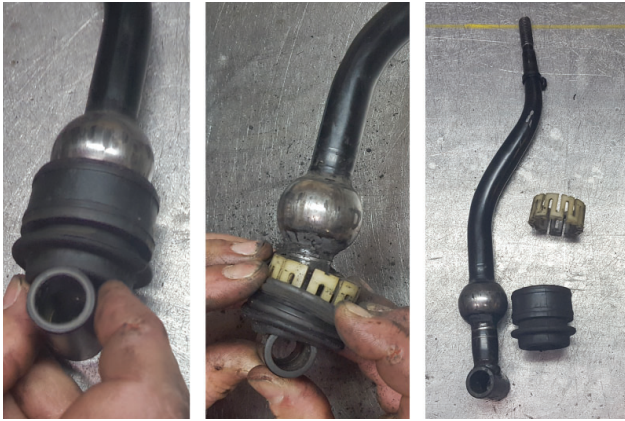
10. Remove (x2) change ball fasteners and holder from shift lever. Retain them for later use. Pull rubber rings from joint collar.



11. Index orientation of shift lever then separate it from change extension. Then remove rear joint collar as shown.



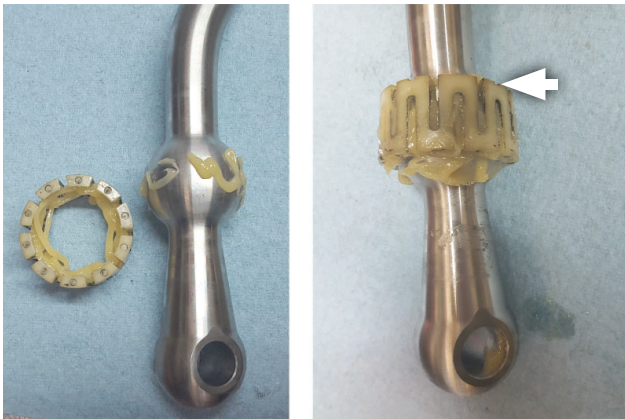
12. Remove (x4) o-rings from rear joint collar then wipe away any excess grease.



13. Remove, retain dust seal and plastic ball seat from shift lever being very careful not to damage parts:

Move assembly down below ball, separate them then slide plastic ball seat up and off of shift lever and finally, work dust seal down and off lever.

SHIFTER INSTALLATION:



14. After thoroughly cleaning ball seat, lubricate with **grease (5)** and fit it onto **short throw shifter (1)** (notches facing up) as shown.



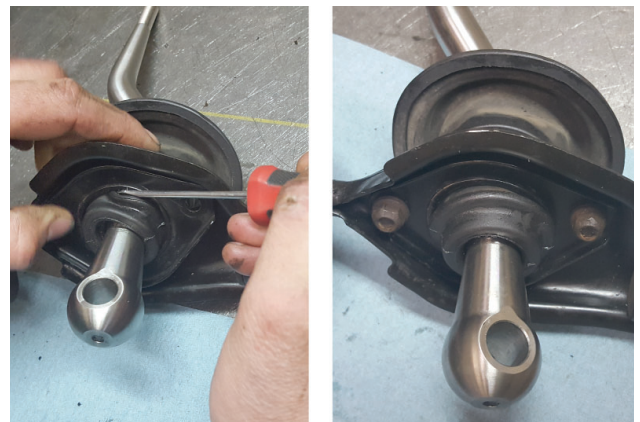
NOTE: Apply lubricant to parts to help with assembly.

15. Carefully pull dust seal onto shifter, assemble it with ball seat and fit them over ball as shown.

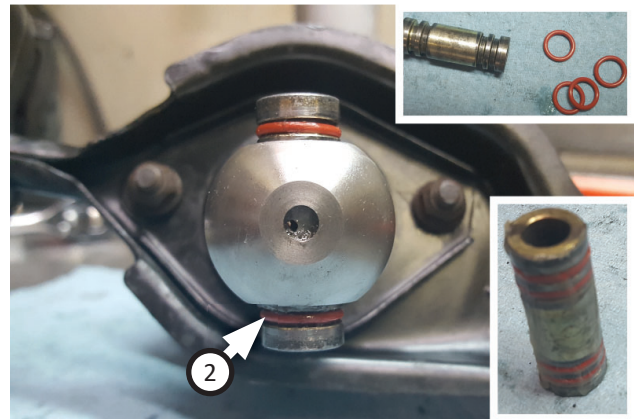


NOTE: If installing a curved stick, orient it exactly as the original shifter was.

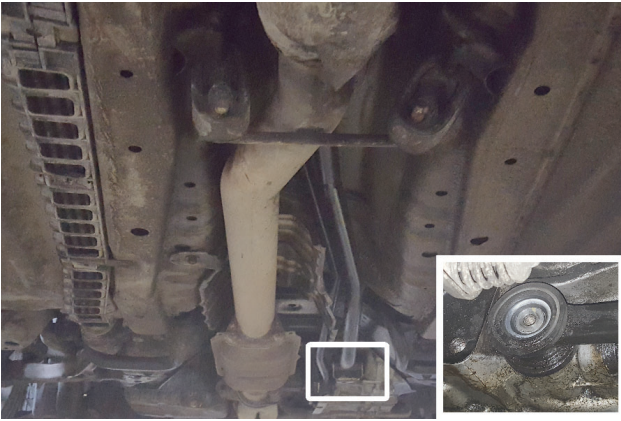
16. Insert shifter assembly back into change extension.



17. Replace change ball holder carefully working dust seal lip back into opening. Fasten holder with fasteners, (removed step 10) making sure square portion of bolt is fully seated. Tighten to 7 ft-lbs.



18. Thoroughly clean rear joint collar and assemble (x4) **o-rings (2)** into grooves. Again, lubricate joint collar, bushings and hole in bottom end of shifter. Install joint collar into hole in shifter.



NOTE: Shifter must be carefully guided into mount to keep it from ripping dust seal – take your time.

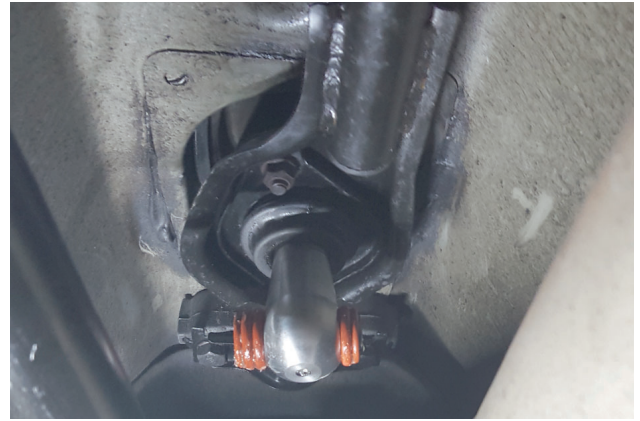
19. Reinstall change extension and shifter back into vehicle, fitting shifter back up through mount.



20. Remount front of change extension to transmission and tighten bolt (removed step 7) to 16 ft-lbs.



21. Remount rear of change extension into rear extension mount, then replace (x2) bolts (removed step 6) and tighten to 16 ft-lbs.



22. Install remaining o-rings following directions based on the vehicle make/model indicated below.

Honda Civic/CRX, 1990-93 Integra:

Lubricate and place (x2) **o-rings (3)** onto rear joint collar, on either side of shifter. Swing change rod up and align shifter so they slide together, being careful not to damage o-rings. Insert bolt and tighten nut to 16 ft-lbs.

1994+ Integra:

Lubricate and place (x2) **o-rings (4)** on rear joint collar, both on the passenger side of shifter. Place remaining **o-ring (4)** on driver side of shifter.

NOTE: To bias shifter toward a more racing oriented shift pattern, reverse above placement (two on drivers side and one on passengers).

Lubricate and place (x2) **o-rings (3)** on rear joint collar, on each side of shifter. Swing change rod up and align shifter so they slide together, being careful not to damage o-rings.



23. Insert bolt and tighten nut to 16 ft-lbs.



24. Reconnect both rubber exhaust hangers.

25. Carefully lower vehicle and install shift knob. Move shifter through each gear, checking for binding or rough engagement. If shifter does not move smoothly, raise and support vehicle and check that o-rings are properly seated and that linkage does not bind.

Congratulations, the installation of your **B&M Short Throw Shifter** is now complete!

