



INSTALLATION INSTRUCTIONS  
Part No. 45202  
**PRECISION MANUAL SPORTSHIFTER™**  
for 1995-2004 Toyota Tacoma 4WD  
and 1996-2001 Toyota 4Runner  
with 3.4L engine and 5-speed transmission (R150F)



**BEFORE STARTING**

Take a moment to read and understand these instructions.

We recommend that you retain all factory parts.

**WORK SAFELY!** Park the vehicle on a clean, level surface. Turn the ignition switch OFF. Chock the wheels, and set the parking brake before starting.

**NOTES**

Installation requires moderate mechanical skill. If this job is beyond your abilities, seek the services of a qualified technician.

The shifter mechanism is precision-assembled at our factory. **Any modification or disassembly of the shifter will void its warranty, and may cause it to malfunction.** Disassemble items **only** where specified in the instructions.

If you do not understand any part of these instructions, please call **B&M Technical Support** at (866) 464-6553 for assistance.

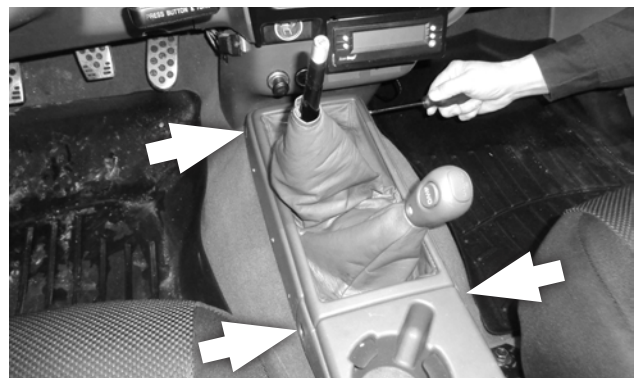
**REMOVE THE STOCK SHIFTER**



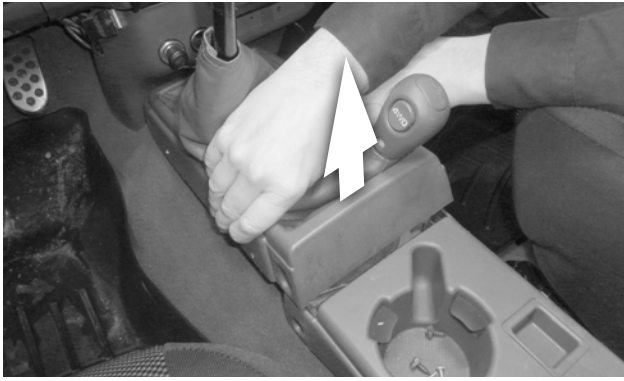
1. Remove the shift knob by unscrewing it from the shift lever.



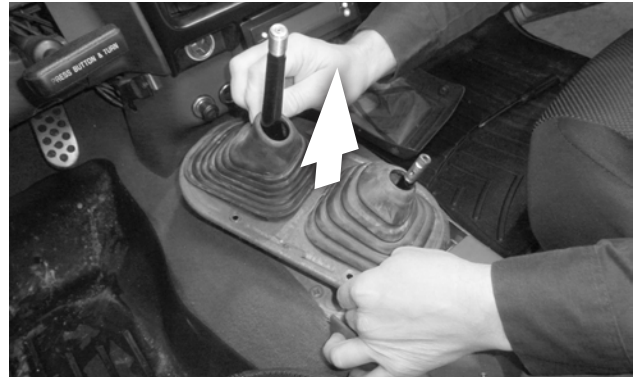
2. Remove the screw from the side of the transfer case shift knob.



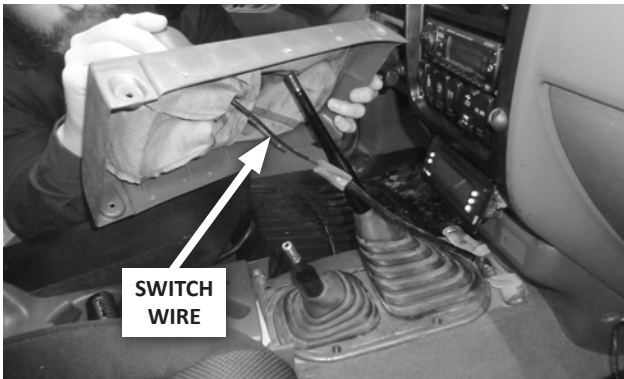
3. Remove the 2 screws from each side of the front console (4 screws total).



4. Lift the rear of the front console, carefully separating it from the center console.

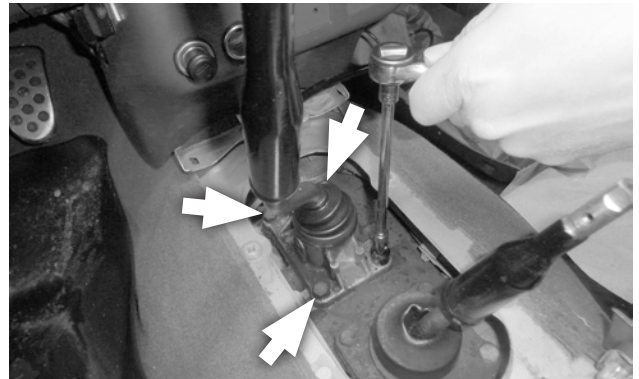


7. Work the rubber boots up their shift levers, lift the cover plate assembly over the levers, and set it aside.

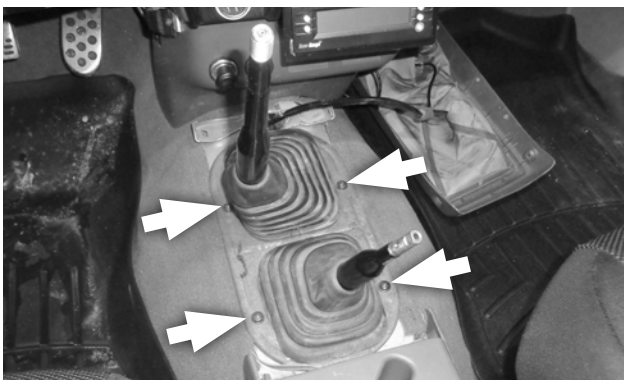


5. Carefully lift the front console assembly (including the leather boots and the transfer case shift knob) over the transmission and transfer case shift levers, and set it aside.

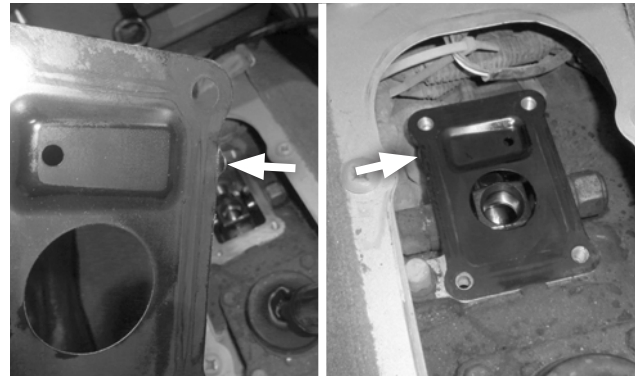
**CAUTION:** The 4WD switch wire is attached to the underside of the knob.



8. Put the shifter in NEUTRAL. Remove the 4 mount screws, then remove the stock shifter.

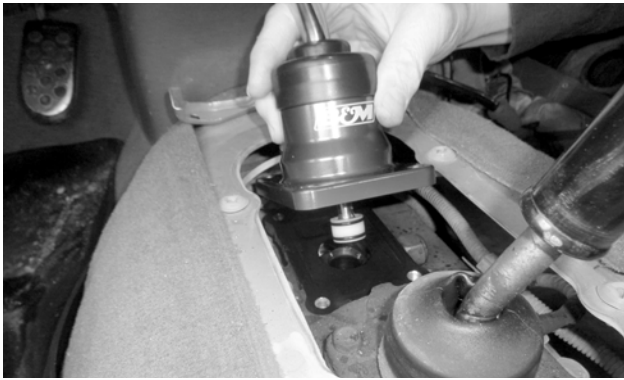


6. Remove the 4 cover plate screws.



9. If the sheet metal splash plate comes off with the shifter, wipe the shifter mount pad clean, wipe both sides of the splash plate flange, and reinstall the plate back on the mount pad with the tab on the left side pointed down.

## INSTALL THE B&M PRECISION SPORTSHIFTER



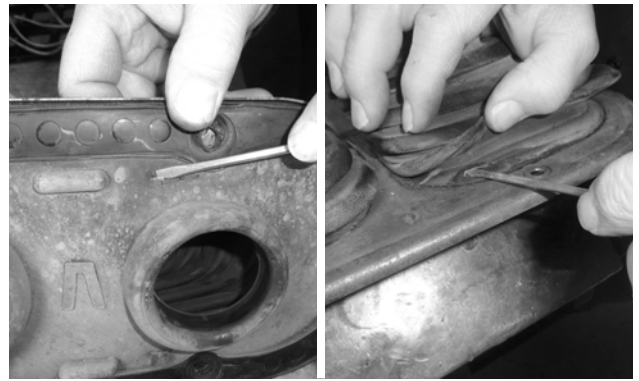
10. On the B&M shifter, lubricate the pivot bushing o-rings. Then install the shifter on the mount pad, inserting the pivot bushing into the shift linkage.



11. Re-install the stock shifter screws, and tighten to 13 ft-lbs.



12. Remove the knob from the shifter and set it aside.



13. On the cover plate assembly, remove the four staples that hold the upper and lower dust boots together.



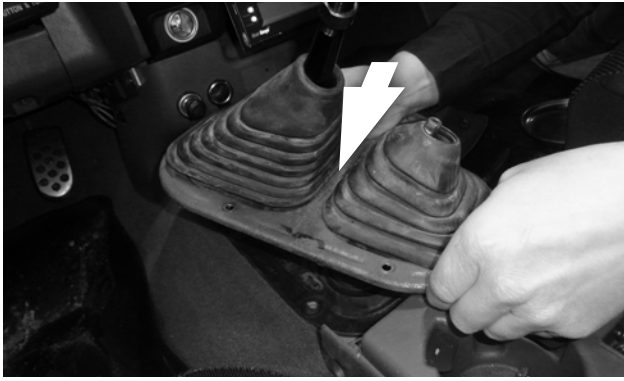
14. Carefully peel the lower dust boot off of the cover plate assembly.



15. Install the lower dust boot over the shift levers, and work its front opening down over the rubber boot on the shifter.

**NOTES:** Do not dislodge the shifter boot from its groove on the shifter. Soapy water will help ease installation.

The lower dust boot should overlap the shifter boot. Do not push it down below the bottom edge of the shifter boot.



16. Lower the rest of the cover plate assembly over the shift levers.



19. Lower the front console assembly over the shift levers.



17. Work both boots down the their shift levers. Carefully work the front boot opening past the 2 screw heads, then push it down the lever until it touches the raised lip.



20. Reinstall the 4 console assembly screws, ensuring that the 4WD wire is tucked fully under the console (not caught under the side).



18. Re-install the 4 cover plate screws.



21. Reattach the knob to the transfer case shift lever.



**22. Run the jam nut all the way down the threads, then install the shift knob.**



**23. Thread the knob all the way down, back it off just enough to align it as desired, and tighten the jam nut against it.**



**Congratulations, your B&M Precision SportShifter™ is now installed and ready to enjoy!**

---

#### **KEEP THESE INSTRUCTIONS FOR FUTURE REFERENCE**

B&M Performance maintains a highly-trained technical service department to answer your technical questions, provide additional product information and offer various recommendations.

**B&M TECHNICAL SUPPORT: (866) 464-6553**

