



INSTALLATION INSTRUCTIONS  
Part No. 45203  
**PRECISION MANUAL SPORTSHIFTER™**  
for 2005-2015 Toyota Tacoma 4WD and  
PreRunner, with 4.0L engine and 6-speed  
transmission (RA60F or RA60)



REMOVE THE STOCK SHIFTER



1. Remove the shift knob by unscrewing it from the shift lever.

BEFORE STARTING

Take a moment to read and understand these instructions.

We recommend that you retain all factory parts.

**WORK SAFELY!** Park the vehicle on a clean, level surface. Turn the ignition switch OFF. Chock the wheels, and set the parking brake before starting.

NOTES

Installation requires moderate mechanical skill. If this job is beyond your abilities, seek the services of a qualified technician.

The shifter mechanism is precision-assembled at our factory. **Any modification or disassembly of the shifter will void its warranty, and may cause it to malfunction.** Disassemble items **only** where specified in the instructions.

If you do not understand any part of these instructions, please call **B&M Technical Support** at (866) 464-6553 for assistance.

REQUIRED SUPPLIES

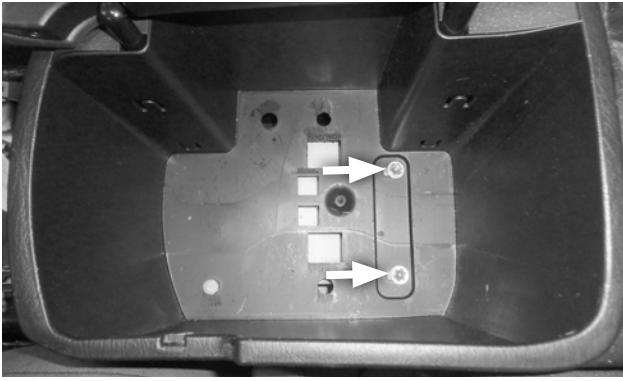
- Oil resistant RTV silicone gasket maker (Permatex Ultra Black® or equivalent)



2. Use a plastic trim removal tool to separate and remove the cup holder from the console.



3. Remove the 4 screws shown.



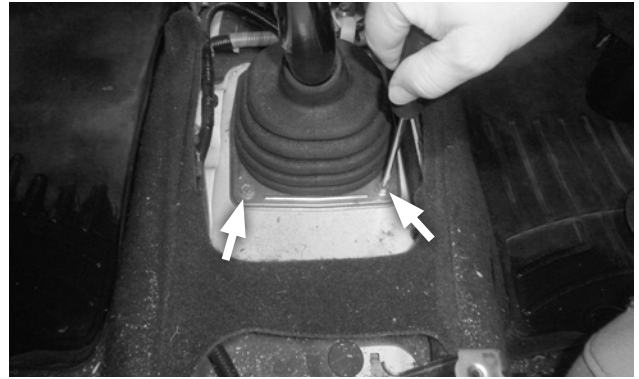
4. **Open the console storage door**, remove the felt liner, and remove the 2 screws.



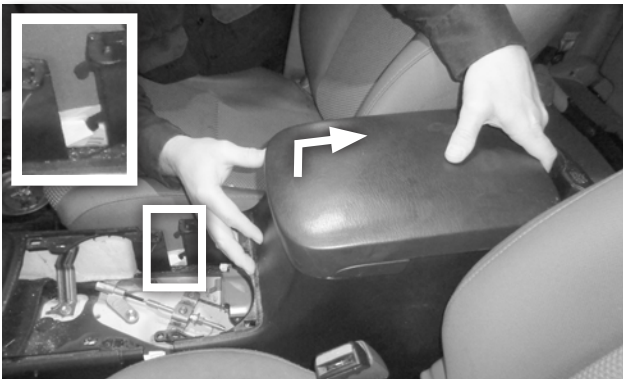
7. **Remove the front console by first lifting its rear end**, then moving the whole console rearward.



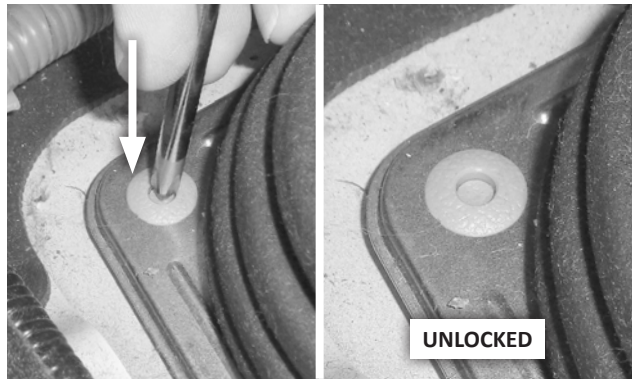
5. **With a small flat-tip screwdriver**, separate the 2 tabs from their pins at the joint between the front and rear consoles (1 tab on each side).



8. **Remove the 2 screws** at the rear of the cover plate assembly.



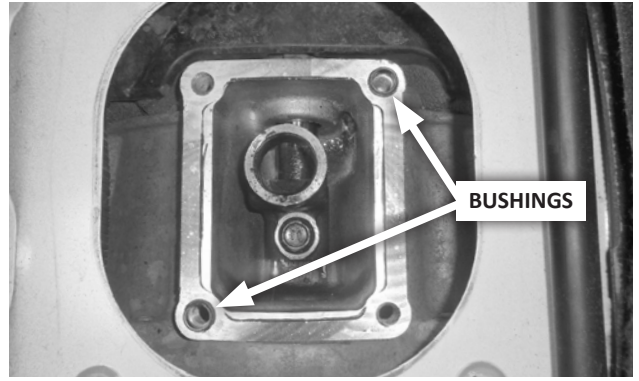
6. **Lift the rear console slightly** and move it slightly rearward to separate it from the front console. (Note the two locking tabs on each side.)



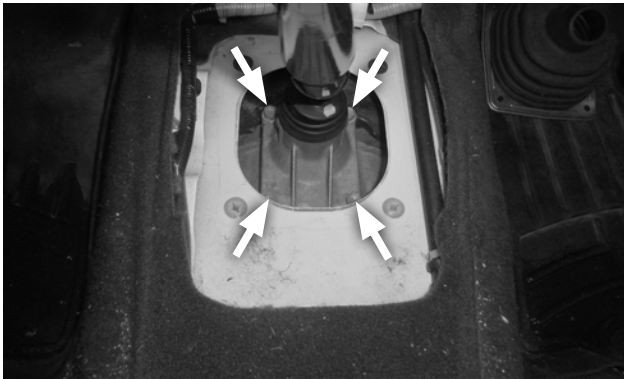
9. **Unlock the 2 plastic push rivets** at the front of the cover plate by depressing their center plungers slightly (about 1/16") with a punch or small Phillips head screwdriver.



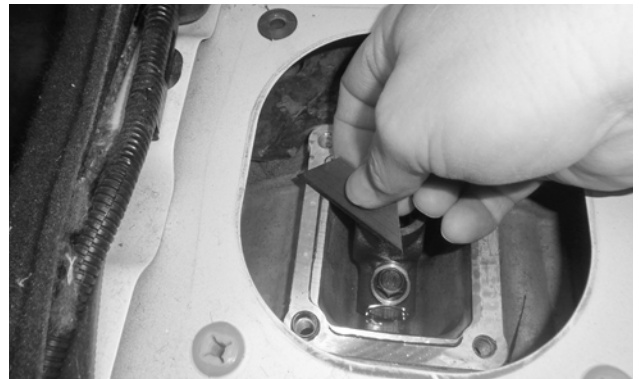
10. Remove the cover plate, working the rubber boot up over the shift lever.



13. If either of the 2 alignment bushings remains with the shifter, return them to their locations on the shifter mount pad.



11. Put the shifter in NEUTRAL, then remove the 4 mount screws.



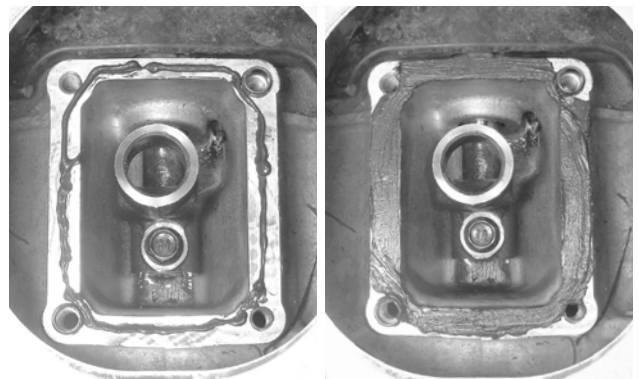
14. Clean all RTV sealant off the mount pad.



12. Remove the shifter from the transmission as follows: Grasp the shifter housing and lever together, as a unit, and carefully tilt them off the mount pad, so as to break the adhesion of the RTV sealant between the shifter and transmission.

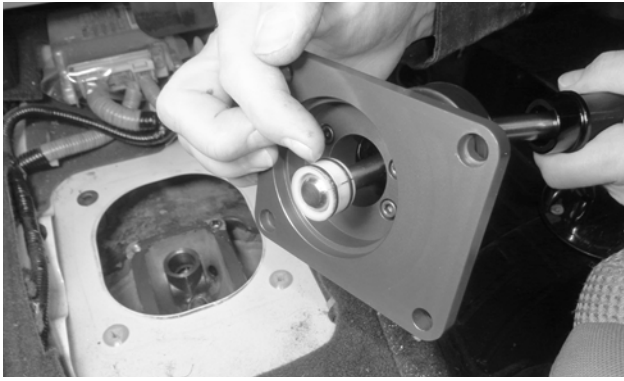
**CAUTION:** When removing the shifter from the transmission, do not shift the transmission out of NEUTRAL.

#### INSTALL THE B&M PRECISION SPORTSHIFTER



15. Apply a thin bead of oil resistant RTV silicone gasket maker to the shifter mount pad, then spread it over the mating surface.





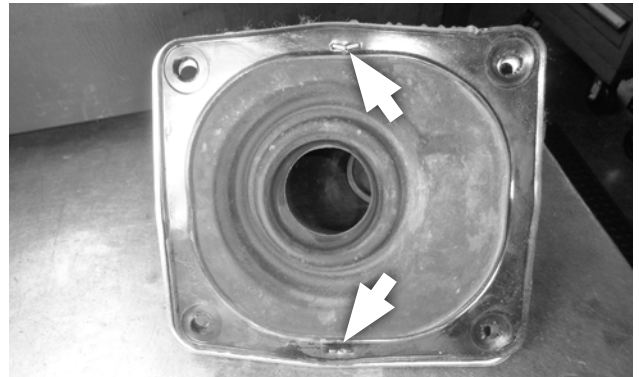
16. On the B&M shifter, lubricate the pivot bushing o-rings, and align the bushing with the lever centerline (make sure it's not cocked).



19. Remove the knob from the shifter and set it aside.



17. Install the shifter on the mount pad. First insert the pivot bushing into the shift linkage. Then align the 2 mount pad bushings.



20. On the cover plate assembly, remove the 2 staples that hold the upper and lower dust boots together.



18. Re-install the 4 stock shifter screws, and tighten to 15 ft-lbs torque.



21. Carefully peel the lower dust boot off of the cover plate assembly.



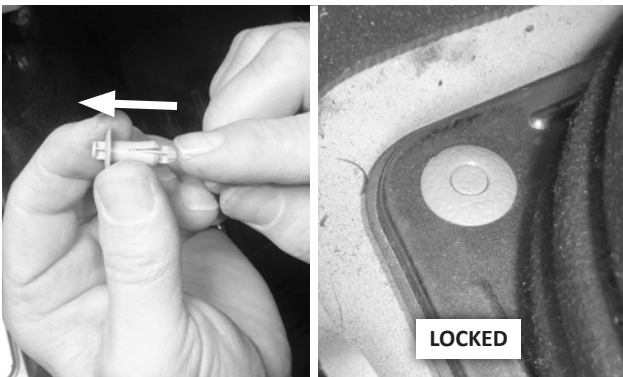
22. Install the lower dust boot over the shift lever, and work it down over the rubber boot on the shifter.

**NOTES:**

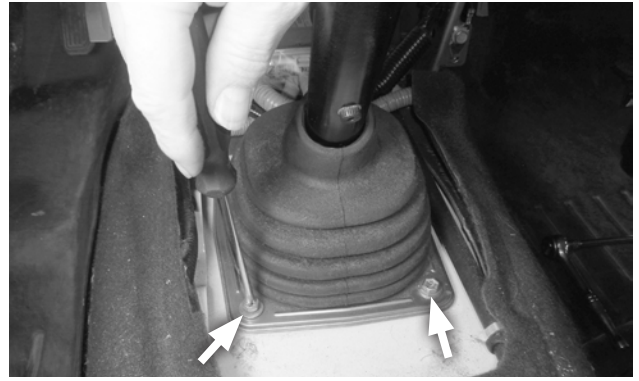
- Do not dislodge the boot on the shifter from its groove. Soapy water will help ease installation.
- The lower dust boot should overlap the shifter boot. Do not push it down below the bottom edge of the shifter boot.



23. Lower the rest of the cover plate assembly over the shift lever, carefully working the boot's opening around the screw heads on the lever.



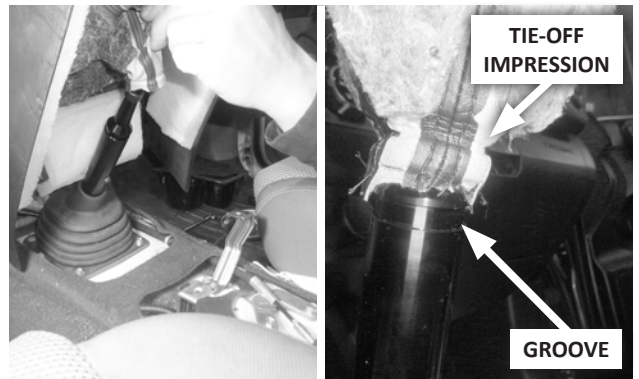
24. Re-set the plungers on the 2 push rivets by pushing them up from the bottom end. Then insert the fasteners in their holes and lock them by pushing the plungers down flush.



25. Re-install the 2 cover plate screws.



26. On the upper console panel, turn the leather boot inside-out, carefully cut and remove the tie-off string, and remove the chrome trim ring.

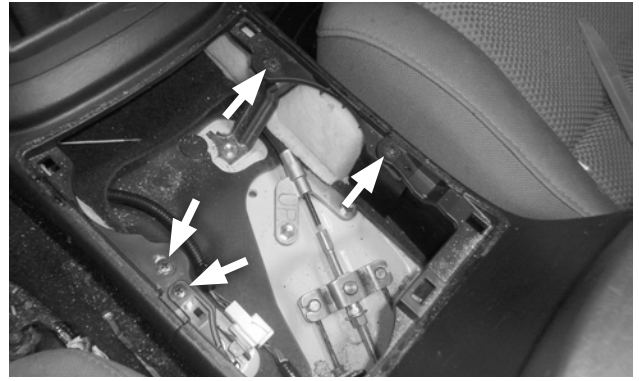


27. Move the shift lever into 4th gear. With the leather boot still turned inside-out, work its opening down over the shift lever until the impression from the tie-off string is located over the groove on the lever.





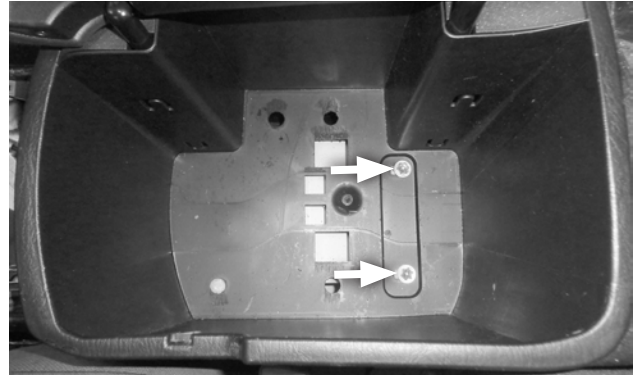
**28. Secure the boot to the lever with the new cable tie, locating the buckle at the flat at the rear of the groove. Tighten the cable tie, and cut off the tail.**



**31. Reinstall the 4 forward screws.**



**29. Reinstall the front console.**



**32. Reinstall the 2 storage compartment screws and reinstall the felt liner.**



**30. Slide the rear console forward, engaging both the 2 top tabs, and the 4 locking tabs (2 on each side), with the front console.**



**33. Reinstall the cup holder in the console base.**



**34. Run the jam nut all the way down the threads, then install the shift knob.**



**Congratulations, your B&M Precision SportShifter™ is now installed and ready to enjoy!**



**35. Turn the knob all the way down until it touches the nut. Then back it off to align it as desired, and tighten the jam nut.**

#### **KEEP THESE INSTRUCTIONS FOR FUTURE REFERENCE**

B&M Performance maintains a highly-trained technical service department to answer your technical questions, provide additional product information and offer various recommendations.

