



HURST PADDLE SHIFT KIT

2010 and 2011 Camaro (V6 & V8 automatic)

Catalog #538 5430 & 538 5432

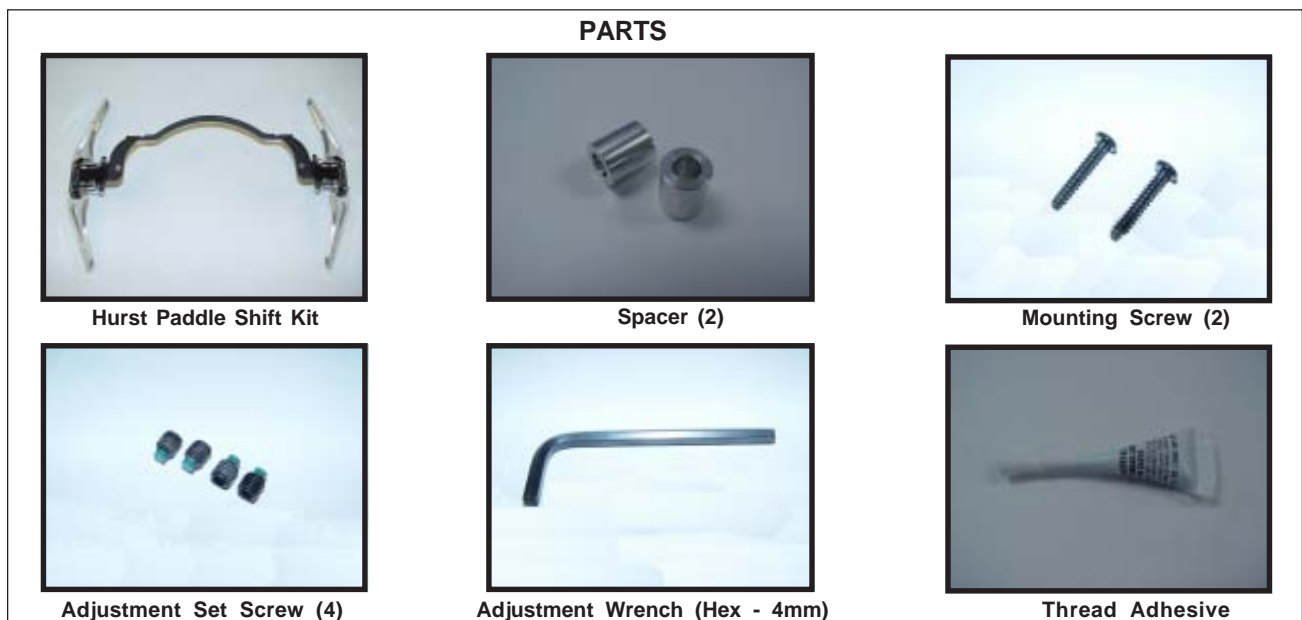
©2011 by Hurst Performance

Thank you for purchasing the Hurst Paddle Shift Kit. Please note that this product does NOT fit the 2012 and later model Camaro. This shift kit is constructed of the highest quality of stainless steel, aluminum, and Delrin base materials. With proper installation and adjustment, you can expect smooth and seamless operation and function of the factory Tap Shift system all while adding a modern supercar look to your vehicle's interior. Furthermore, this kit has been designed with easily removable paddles that can be changed with differently styled and constructed units (see back page of these instructions).

IMPORTANT! Installing the Hurst Paddle Shift Kit requires moderate mechanical ability. Read this instruction sheet completely first, so that you thoroughly understand it and can become familiar with the procedure before attempting installation. Furthermore, this shift kit has been primarily designed as a "competition" and/or "race" product. As such, some functions of the vehicle (specifically high beam "flash" function and windshield "mist" function) may be limited depending on installation preferences and at certain steering wheel positions. If these functions are imperative to the safety of your regular daily vehicle operation, **DO NOT** install this product on your vehicle.

WORK SAFELY! Perform this installation on a good clean level surface for maximum safety and with the engine turned "off". Ensure that the parking brake is set and that the vehicle will not move if accidentally started.

INSPECT! Using the parts list below, ensure that all parts are present and free from objectionable defects and/or blemishes prior to beginning installation. Every effort has been made to ensure that these parts arrive to you in perfect and non-damaged order. However, Hurst Performance will not accept returned parts due to cosmetic defect after they have been installed in a vehicle.



PARTS(continued)



Adhesive Washer Pad (4)

TOOLS



Ratchet



T-20 Torx Bit



Short Phillips (#2) Screwdriver

Disassembly

STEP 1. Ensure that the gear shift is in the park position and the emergency brake has been applied.



STEP 2. Unlock the steering column adjustment by pushing the adjustment lock downward. Then adjust the steering wheel all the way down and outward towards the driver's seat. Re-lock the steering wheel into this new position by pushing the lever upward.

NOTE: This step helps provide the maximum amount of space for installation.



STEP 3. Insert the key into the ignition and turn the key to the first position to unlock the steering wheel.

NOTE: In some instances it may be necessary to start the vehicle to complete the next several steps associated with turning the steering wheel.



STEP 4. Turn the steering wheel 90 degrees so that the Tap Shift buttons are pointing straight up and down respectively.



STEP 5. On the back of the steering wheel, remove the screw closest to the Tap Shift button.

NOTE: The screw head is difficult to see and may require looking through the windshield to properly view. Avoid stripping the screw head.

TOOLS: Ratchet & T-20 Torx Bit



STEP 6. Turn the steering wheel 180 degrees to access the opposite screw.



STEP 7. On the back of the steering wheel, remove the screw closest to the other Tap Shift button.

NOTE: Again, this screw head is difficult to see and may require looking through the windshield to properly view. Avoid stripping the screw head.

TOOLS: Ratchet & T-20 Torx Bit



Assembly

STEP 8. Insert a provided Spacer into the recess of the recently removed screw.



STEP 9. Position the Hurst Paddle Shift unit behind the steering wheel but in front of the turn signal and windshield wiper stalks. Align the mounting hole with the previously installed Spacer.

NOTE: The curvature in the Hurst Paddle Shift unit bracket should follow the top curvature of the steering wheel if aligned correctly.



STEP 10. From behind the steering wheel, screw a supplied Mounting Screw through the mounting hole in the Hurst Paddle Shift bracket, then through the Spacer and directly into the steering wheel. DO NOT fully tighten the screw at this time.

TOOL: Short Phillips Screwdriver

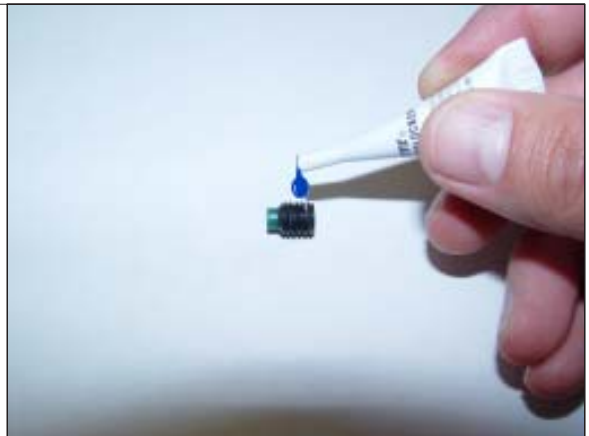


STEP 11. While holding the Hurst Paddle Shift unit in place, turn the steering wheel 180 degrees and repeat steps 8-10 on the opposite side. When the Hurst Paddle Shift bracket is properly aligned to the top of the steering wheel, fully tighten both mounting screws.

TOOL: Short Phillips Screwdriver



STEP 12. Place a drop of thread adhesive on each of the four (4) Adjustment Set Screws.



STEP 13. Tighten each Adjustment Set Screw into the Hurst Paddle Shift bracket threaded holes.

TOOL : Adjustment Wrench (4mm Hex)



STEP 14. OPTIONAL: Install the four (4) Adhesive Washer Pads directly onto the back of the steering wheel where each Adjustment Set Screw tip contacts the plastic steering wheel back plate.

NOTE: In high heat and extreme use (racing) operating conditions, these Adhesive Washer Pads will help maintain proper adjustment settings and help prevent damage to the softened plastic steering wheel back plates.



Adjustment & Operation

STEP 15. Tighten the four (4) Adjustment Set Screws into the Hurst Paddle Shift bracket. This will cause the screws to push against the back of the steering wheel providing support for the paddles and a proper gap (.02"(0.5mm) - .10" (2.5mm)) between the paddle and the original Tap Shift button. A proper gap is required to compensate for changes in adjustment due to temperature, stress, and vibration (see next step).

TOOL: Adjustment Wrench (4mm Hex)



STEP 16. The internal frame work of the steering wheel is constructed of cast aluminum. As such, the steering wheel tends to expand and contract with changes in temperature. Thus, it is suggested to adjust the Adjustment Set Screws to the optimal gap settings when the vehicle interior is at its warmest normal operating conditions.

WARNING! Failure to properly adjust the above explained gap could prevent the vehicle from shifting or cause the vehicle to improperly shift within the "M" mode. If this occurs, immediately shift (via the console shifter) the vehicle to "D" (drive) and discontinue the use of the Hurst Paddle Shift Kit until it can be properly re-adjusted.



STEP 17. Even with proper initial adjustment, over time due to factors such as vibration, heat cycles, stress and many other factors; periodic readjustment will be required. A 4mm adjustment wrench is included in this kit and is intended to be left in the vehicle for easy and convenient periodic adjustment.



STEP 18. Paddle Adjustment: The shift paddles are attached with two (2) mounting screws set in two (2) mounting slots and can be adjusted radially inward or outward depending on the driver's finger size and personal preference. Additionally the paddles can be replaced by removing and re-installing these same screws. Thoroughly test the action of the paddles and movement of the wheel prior to operating the vehicle.

TOOL: Adjustment Wrench (4mm Hex)



STEP 19. Flex: The Hurst Paddle Shift bracket has been constructed from high quality stainless steel and then powdercoated to match the vehicle's interior. This material was specifically selected to have an intended amount of flexibility to better conform to variations in the steering wheel and in the event of a collision and/or unintended interference, be able to flex and deform without injuring the driver. **CAUTION:** certain seating positions and hand positions may cause unintended interference with the paddles and could cause injury. Be sure to test your seating and hand position on the wheel prior to operating your vehicle. **DO NOT** use this product if unintended interference disrupts your normal driving motions.



STEP 20. Limited Clearance (A): The Hurst Paddle Shift Kit has been designed to operate in an area that has little room for additional clearance. Adjustment may be required to use certain functions such as: high beam flash and/or windshield mist. In some vehicles any amount of adjustment may still block these functions at certain steering wheel positions. If these functions are necessary for the safety of vehicle operation in your particular driving environment then **DO NOT** continue use of this product.



STEP 21. Limited Clearance (B): The Hurst Paddle Shift Kit has been designed to operate in an area that has little room for additional clearance. Large key rings and other objects attached to the ignition key may interfere with the proper operation of the paddles and could limit steering wheel motion. **DO NOT** attach any object that could potentially contact the paddles or other mechanisms of this kit directly to the ignition key while using this product.



STEP 22. Enjoy!



Check the Hurst website at www.hurst-shifters.com and B&M website at www.bmracing.com for various options for your Hurst Paddle Shift Kit and that directly fit your 5th generation Camaro with automatic transmission:



#5385431
Hurst "Jagan" style
aluminum paddles



#5385433
Hurst Standard style
Delrin paddles



#567 1518
Hurst Roll/Control
complete installation kit
(direct fit for 2010+
Camaro)



#538 0432
Hurst Comp Stick and
Plate Kit (titanium
anodized handle)



#538 0434
Hurst Comp Stick and
Plate Kit (black Delrin
handle)



#538 0430
Hurst Comp Plate Kit



#5380431
Hurst Comp Stick Kit
(titanium anodized
handle)



#538 0433
Hurst Comp Stick Kit
(black Delrin handle)



#20340
B&M SFI approved
flexplate (direct
fit for 2010+
Camaro)

Technical Service

A highly trained technical service department is maintained by Hurst Performance to answer your technical questions, provide additional product information and offer various recommendations. Hurst offers a wide variety of custom T-Handles and knobs that can be used with this shifter to allow the driver to tailor the vehicle to his/hers personal liking. See your local retailer of Hurst products for specific prices.

Technical service calls, correspondence, and warranty questions should be directed to the following address:

Hurst
9142 Independence Ave.
Chatsworth, CA 91311
Phone (818) 483-1366
Monday-Friday 7AM to 4PM PST