



Installation Instructions

Product: EradiSpeed1 Front

Instruction Part Number: 6000288

Vehicle

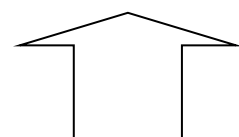
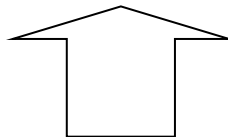
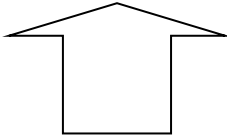
Rev Date: 09 June 2017

Make: GM

Model: Pickup / SUV

Year(s): 2005> Truck/ 2007> SUV

ATTENTION: Read this before going any farther! Returns will not be accepted for ANY installed PART or ASSEMBLY. Use great care to prevent cosmetic damage when performing wheel fit check. In the event that a product must be returned, please contact Baer Customer Service for a RMA Number.



Notices – Read and Follow BEFORE ATTEMPTING INSTALLATION

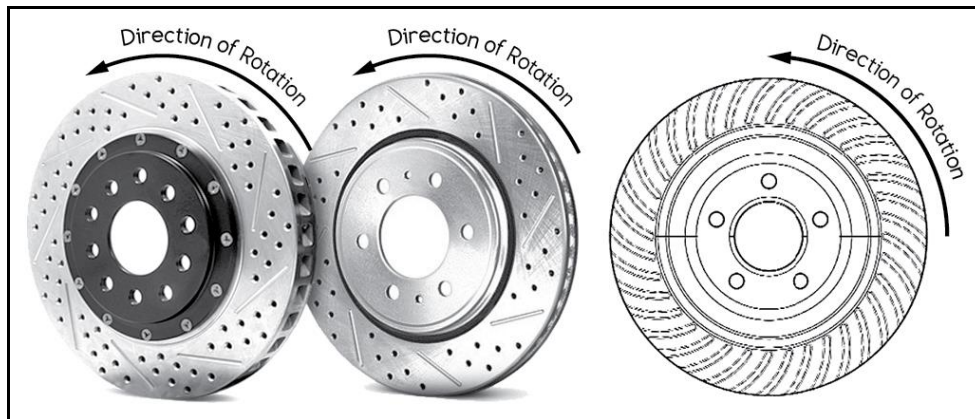
- All installations require proper safety procedures and protective eyewear.
- All installations assume basic mechanical skill and a factory service manual for the vehicle on which the installation is to be performed.
- All references to the “left” side of the vehicle correlate to the driver’s side of the vehicle.
- Any installation requiring you to remove a wheel or gain access under the vehicle requires use of jack stands appropriate to the weight of the vehicle. In all cases, jack stands rated for a minimum of 2-tons is recommended.
- A selection of hand tools sufficient to engage in the installation of these products is assumed, and is the responsibility of the installer to have in his/her possession prior to beginning this installation. All installations, which require removal of hydraulic hoses and/or bleeding of the brakes, require appropriate fitting/line wrenches, safety catch can, and protective eyewear. Other than these items, if unique or special tools are required they will be stated appropriately in the installation step.
- ALWAYS CONFIRM WHEEL FIT PRIOR TO BEGINNING INSTALLATION OF ANY BRAKE SYSTEM OR “UPSIZED” ROTOR UPGRADE! In addition to checking wheel fitment (available online at www.baer.com), always place the actual corner assembly or a combination of the caliper assembly onto the rotor, and into the actual wheel. This procedure will reconfirm proper clearance between the caliper and the wheel before proceeding with the actual installation.

BAER Your Complete Performance Brake Supplier!

- Returns will **not** be accepted for systems that have been partially or completely installed. Use extreme care when checking wheel fitment to prevent any cosmetic damage.



- When installing new Baer rotors, be sure to follow the direction of rotation indicated on the rotor hat area with either an arrow, or an "L" for left, or an "R" for right, or both. "L" or left always indicates the driver's side of US spec vehicles. Images shown are "L" left rotors:



- A proper professional wheel alignment is required for any system requiring replacement of the front spindles, or tie rod ends. Follow factory prescribed procedures and specifications unless otherwise indicated.
- At any point, stop the installation if anything is unclear, or the parts require force to install. Consult directly with Baer Technical Staff in such instances to confirm details. Please have these instructions, as well as the part number of the component (part numbers are machined into the brackets) that is proving difficult to install, as well as the make, model, and year (date of vehicle production is preferred) of your vehicle available when you call. Baer's Technical Staff is available from 8:30a.m. - 5:00p.m. Mountain Standard Time (Arizona does not observe Daylight Savings Time) by phone: (602)-233-1411 Monday through Friday.

INSTALLATION:

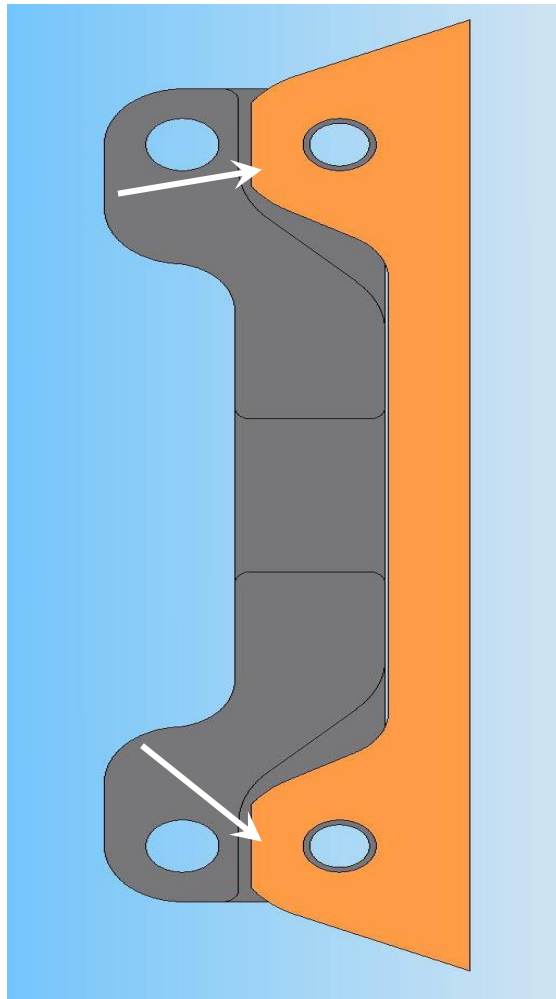
These systems are designed around the Original Equipment spindles with all hardware in place, including the **debris shield**. If aftermarket spindles are used it is **imperative** to keep the debris shield in place between the spindle and hub as this affects the caliper centering over the rotor. Modifications may be needed to the aftermarket spindles and or alternate hardware for installation of Baer Brake System. Call Baer for assistance.

Remove the bolts securing the caliper to the spindle and slide the caliper off of the rotor.

Suspend the caliper in the wheel well but **do not** let it hang from the brake hose.

Remove the original rotor and clean the hub surface for proper rotor seating. Clean both sides of the anchor mounting tabs, paying attention to the inboard side where the Baer intermediate bracket will attach.

The spindle may need a small amount of material removed for bracket clearance. The arrows on the drawing below show where the material needs to be ground off. A small hand held grinder will easily remove the material to allow the bracket to bolt to the spindle. The bracket bolts should thread into the bracket easily with the bracket flat against the spindle. Install the Baer intermediate bracket to the inboard side of the spindle using the supplied 14mm bolts and **NO WASHERS**. Torque to 110 ft-lbs.



BAER Your Complete Performance Brake Supplier!

You may need to remove material indicated by arrows for bracket clearance.

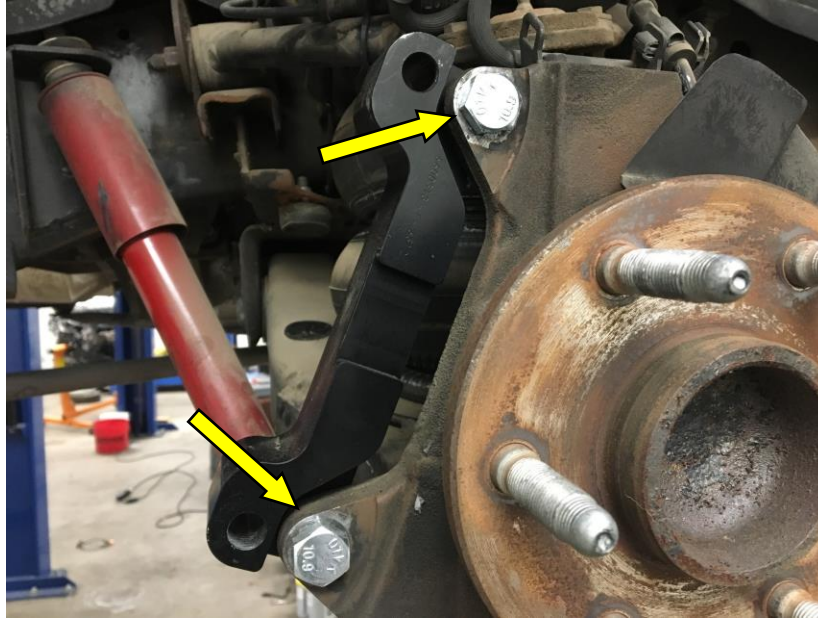


Figure 1

Shows the intermediate bracket properly installed with NO WASHERS. Torque to 110 ft-lbs.

Clean all surfaces of the hub face including the snout, rotor register and flange. Install correct side rotor and secure with 3 lug nuts and washers to make sure the rotor is sitting flat against the hub. caliper installation easier.

This is a good time to check pad wear and replace if necessary.

Install the caliper. Secure with the supplied 14mm x 60mm bolts. Torque to 110 ft-lbs.

You may notice upon install, that a small amount of brake pad extends beyond the outer diameter of the rotor. This is a necessary design feature, due to the increased height needed for the curvature (radius) of the factory caliper. This slight extension allows the caliper to clear the larger rotor diameter and has no adverse effect on the performance.

Repeat these steps for the other side and recheck all attachment points and fittings.

Refer to Rotor Seasoning procedures contained on a separate sheet, or on www.baer.com

For service components and replacement parts contact your Baer Brake Systems Tech Representative.