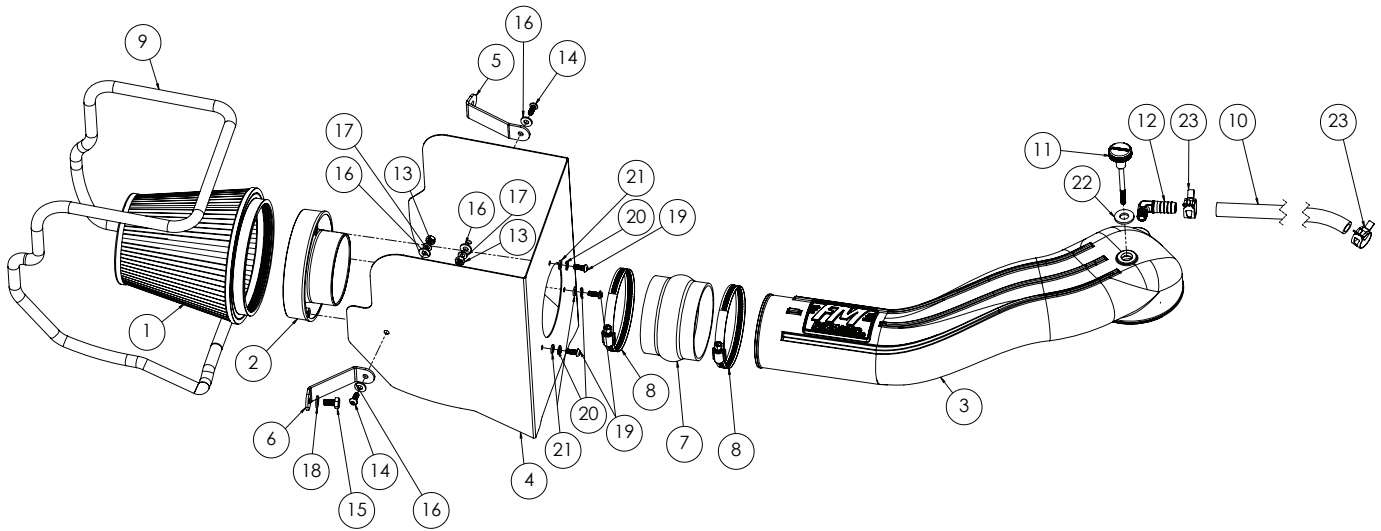




Installation Instructions  
**615109**  
 1994-02 DODGE RAM TRUCKS  
 5.2L & 5.9L GAS ENGINE



ITM #	PART #	DESCRIPTION	QTY.
1	AF1002	6" x 7.5" Air Filter	1
2	AF6002	4"-6" Air Filter Adapter	1
3	AF2080	Molded Intake Tube	1
4	AF3080	Airbox	1
5	AF5093	Bracket 1	1
6	AF5096	Bracket 2	1
7	AF4005	4"ID x 3"L Hump Rubber Coupler	1
8	MC400H	3 <sup>3</sup> / <sub>16</sub> " - 4 <sup>1</sup> / <sub>2</sub> " #64 Hose Clamp	2
9	49000061-78	78" Air Box Trim Seal	1
10	49000064-24	½" Fuel Hose - 24" Long	1
N/A	PK1035	Hardware Package includes:	1
11	AF8005	Intake Hold Down Knob	1

ITM #	PART #	DESCRIPTION	QTY.
12	AF4038	90° 5/8" Hose Barb - ¼" NPT Male	1
13	HW115	¼"-20 Nut	2
14	HW245	¼"-20 x 5/8" Screw	2
15	HW249	M8 x 1.25 x 16MM Screw	1
16	HW320	¼" Flat Washer	4
17	HW322	¼" Split Lock Washer	2
18	HW324	M8 Flat Washer	1
19	HW244	M6 x 1.0 x 16MM Screw	3
20	HW318	M6 Split Lock Washer	3
21	HW319	M6 Flat Washer	3
22	HW335	1.062" OD .49" ID Rubber Washer	1
23	MC004P	5/8" Hose Pinch Clamp	2

## OVERVIEW:



**NOTE:** Please inventory all parts before starting the installation process and call our tech line to report any missing parts. This will help avoid potentially stranding your vehicle until any missing replacement parts arrive.

1. Please take a moment to read and understand these instructions before installing your Flowmaster performance system.

### WARNING:

Avoid serious burns! Allow vehicle time to cool completely before handling any engine components.

### CAUTION:

Chock wheels and do not attempt installation until you are confident your vehicle will not move.

## REMOVE STOCK COMPONENTS:



2. Open hood then disconnect intake tube and remove it from engine compartment.



3. Disconnect PCV hose from airbox.

**NOTE:** Depending on your vehicle year and engine size, this hose could be on the driver or passenger side of engine bay.

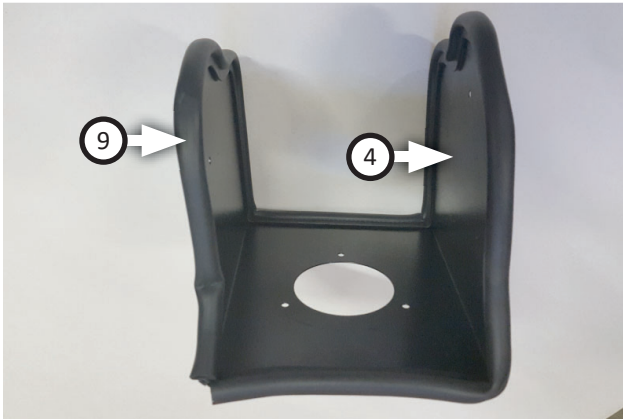


4. Disconnect worm clamp that secures air box to throttle body.



5. Lift to release and remove airbox from vehicle. Remove and retain bolt indicated from engine compartment.

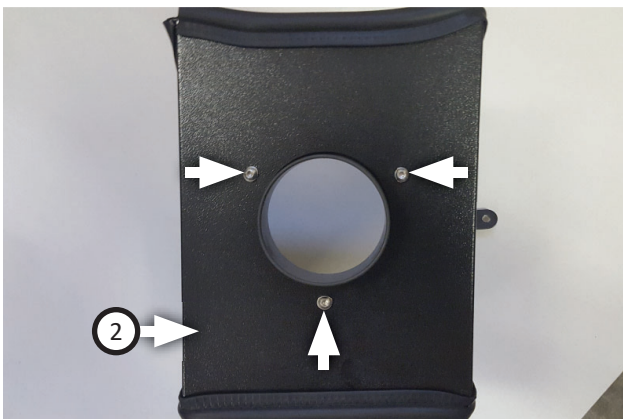
## ASSEMBLE COMPONENTS FOR INSTALL:



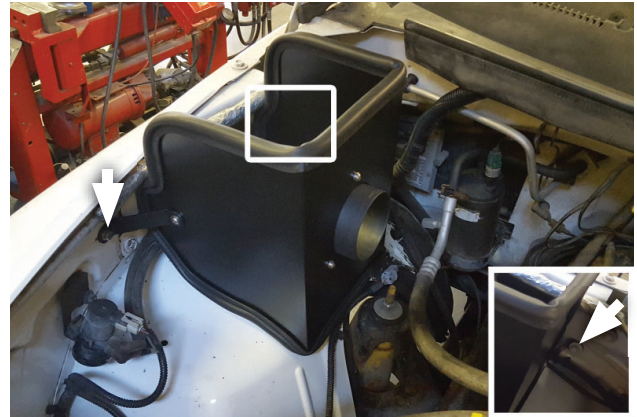
6. Apply **trim seal (9)** to **airbox (4)** then trim excess so it fits precisely as shown.



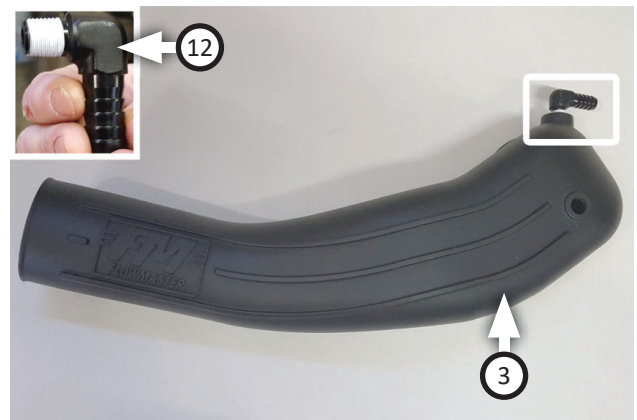
7. Install **bracket 1 (5)** and **bracket 2 (6)** to airbox each with **screw (14)** and **flat washer (16)** through **flat washer (16)**, **split lock washer (17)** and **nut (13)**, referring to diagram as necessary.



8. Install **air filter adapter (2)** into airbox using (x3 ea.) **screws (19)**, **split lock washers (20)** and **flat washers (21)**.



9. Install airbox into engine compartment with bolt (removed step 5), **screw (15)** and **flat washer (18)**.

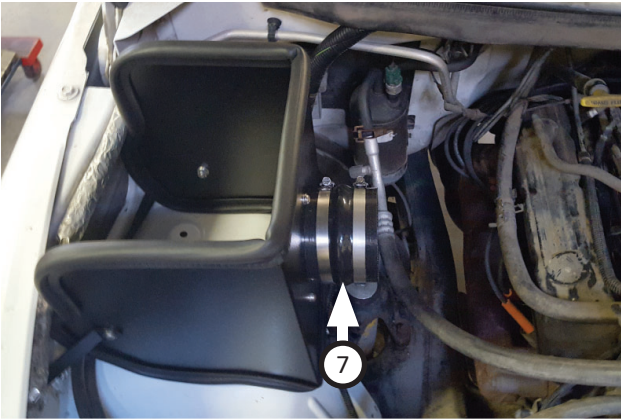


10. Apply thread tape to **hose barb (12)** then install it into **intake tube (3)**.

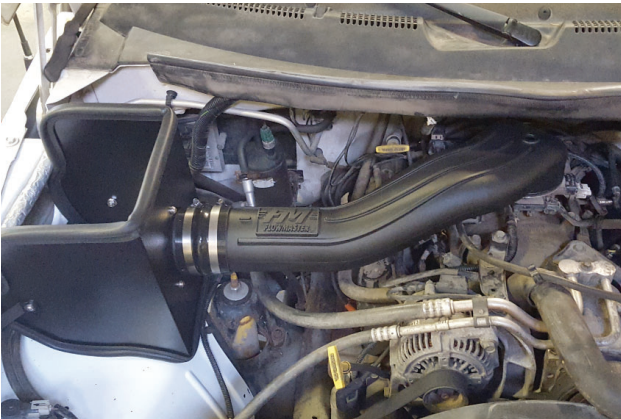
**NOTE:** Adjust the direction of your hose barb according to what side of the engine your PCV valve is.



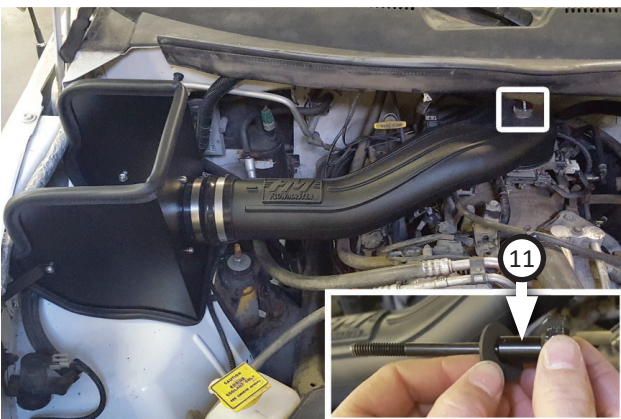
11. Remove gasket from throttle body and inspect it for damage or wear and tear. If it is still functional re-install it, otherwise, purchase a new one to use before continuing installation process.



12. Place (x2) hose clamps (8) onto both sides of hump coupler (7) then fit it onto airbox.



13. Fit intake tube into compartment, connecting it to hump coupler and throttle body, then press it down into place.



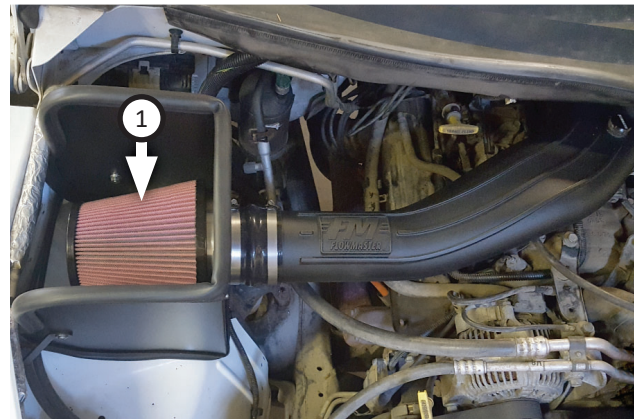
14. Place rubber washer (22) onto intake knob (11) then thread assembly into intake tube. Fit bottom of intake knob into threaded hole in throttle body.



15. Carefully tighten intake knob into tube and throttle body until gasket is slightly compressed.



16. Connect breather hose (disconnected step 3) to hose barb on intake tube. If your hose is too short, replace it with fuel hose (10), trimmed to fit. Secure ends using (x2) hose pinch clamps (23).



17. Install air filter (1) into adapter, adjust components to fit then tighten all clamps to secure system.

Congratulations, the installation of your Flowmaster Delta Force Performance Intake system is complete!

