



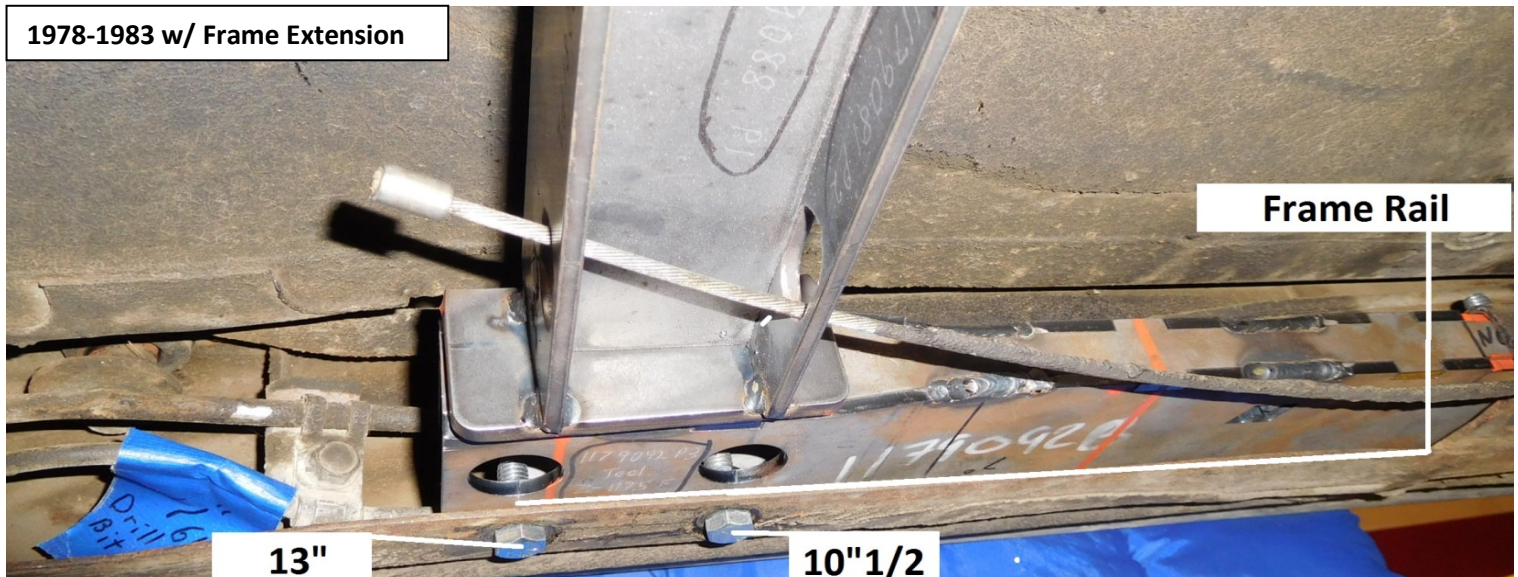
Installation Instructions
G-Body Crossmember
Fits: 1978-1988 GM G-Body
Use with Tremec T-56
Catalog # 67510018
Catalog# 67510019 – Frame Extension

NOTE: 1978- 1983 GM G-Body cars need a frame extension #67510019 which can be purchased separately. This is used to replicate the longer driver side frame rail as developed by gm beginning in 1984.

(some 1983 Hurst Olds originally equipped with the 2004R transmission will not need the frame extension.)

1. 1978- 1983 GM G-Body cars need to measure at the end of the factory driver side frame rail back 10" $\frac{3}{4}$ and 13". Next drill two 25/64 holes to allow the frame extension at the rear to be bolted in and then bolt the front holes in the factory location at the end of the factory frame. 1984-88 no extension needed and just bolt crossmember in factory location.

1978-1983 w/ Frame Extension

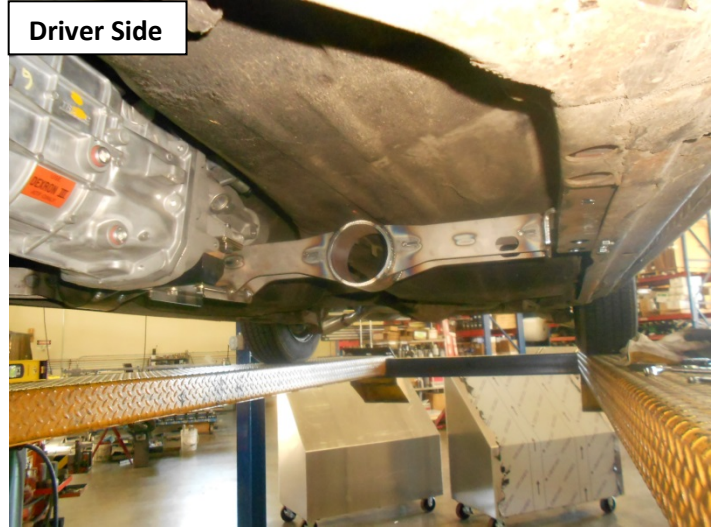


- Carefully raise up the rear tail shaft of the transmission to slide in the cross-member and secure to the frame rail or the frame extensions if used. Once bolted in, install the supplied transmission mount to cross-member and the transmission.

Pass Side



Driver Side



- Route the emergency brake cable through the cross-member and re-connect.



Parts List – 67510018

Cross-member – 1
3/8" x 1" Bolt – 4
3/8" Nylon Nut – 4
3/8" Flat Washer – 4
GM Body Spacer - 4

Parts List – 67510019

Cross-Member Adapter – 1
3/8" x 1" Bolt – 4
3/8" Nylon Nut – 4
3/8" Washer - 4

Technical service calls, correspondence and warranty questions should be directed to:



(707)-544-4761

www.hurst-drivelines.com