



Installation Instructions
717995
 2006-08 DODGE RAM 1500
 5.7L ENGINE

OVERVIEW:

1. Take a moment to read and understand these instructions before installing your Flowmaster performance system.

NOTE: Please inventory all parts now before continuing and if necessary, report any missing items to our tech line. This will avoid potentially stranding your vehicle until any missing replacement parts arrive.

ITM #	PART #	DESCRIPTION	QTY.
N/A	PK521	Hardware Package includes:	1
8	390HA	Clamp Hanger	1
9	226HA	Frame Hanger	1
10	HA168	Rubber Hanger	1
11	HA566	Backing Plate	2
12	HW220	3/8"-16 x 4" Bolt	1
13	HW303	3/8" Flat Washer	2
14	HW309	3/8" Lock Washer	1
15	HW103	3/8" Nut	1
16	MC250BS	2 1/2" Stainless Band Clamp	5
17	MC300BS	3" Stainless Band Clamp	1
18	HW502	7/8" Hanger Keeper	2

ITM #	PART #	DESCRIPTION	QTY.
1	TB467M	Inlet Pipe	1
2	72288-Z	FFX Muffler	1
3	16517M	Right Tailpipe	1
4	16518M	Left Front Tailpipe	1
5	16520M	Left Rear Tailpipe	1
6	16317M	Side Exit Pipe	2
7	ST507B	Tips	2

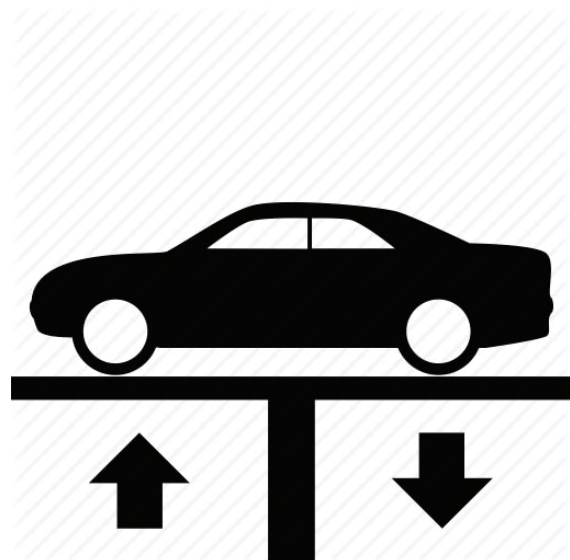
REMOVE STOCK EXHAUST SYSTEM:

2. Raise vehicle up on a hoist or rack to working height. If you don't have access to a hoist or rack, support vehicle with jack stands.

WARNING:
 Avoid serious burns! Allow your vehicle time to cool completely before touching any factory engine components.

To ease preparation and installation of your new kit:

- Apply penetrating lubricant to mounts, bolts and clamps before you remove them.
- Use stands as necessary to support parts as you detach them from your vehicle and again as you install new parts.

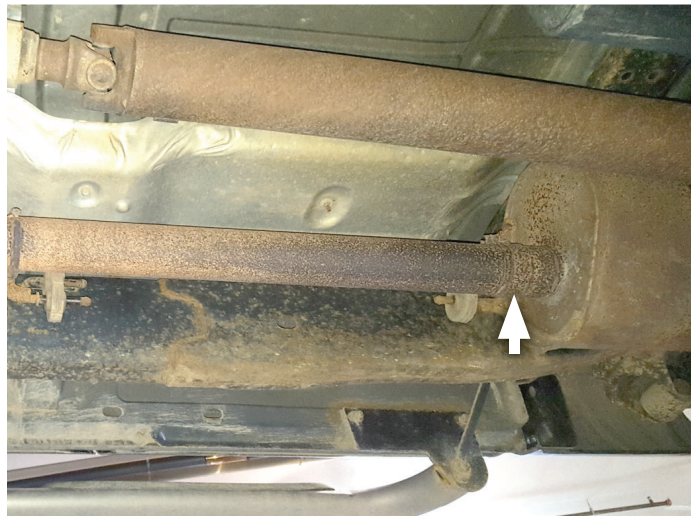


- Cut tailpipe at muffler exit. Disassemble hanger wire from isolator and remove tailpipe section from vehicle.



- Support muffler and disassemble wire hangers from isolators. Loosen ring clamp, disconnect inlet pipe then remove exhaust system.

NOTE: Clamp connection may need be heated or cut to be separated.



INSTALL FLOWMASTER EXHAUST SYSTEM:

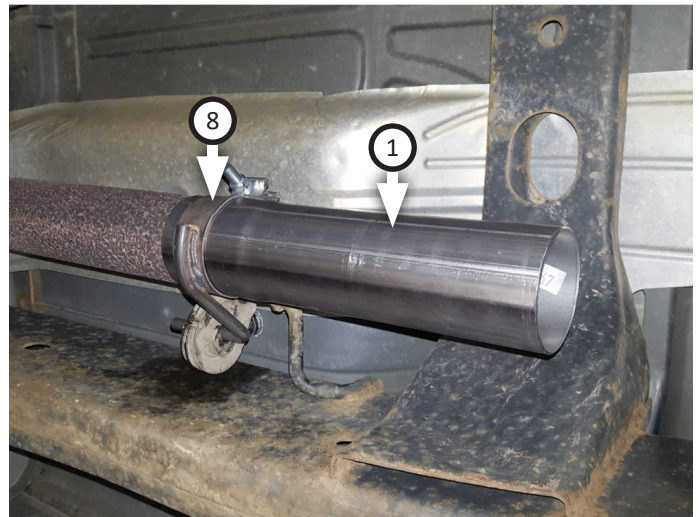
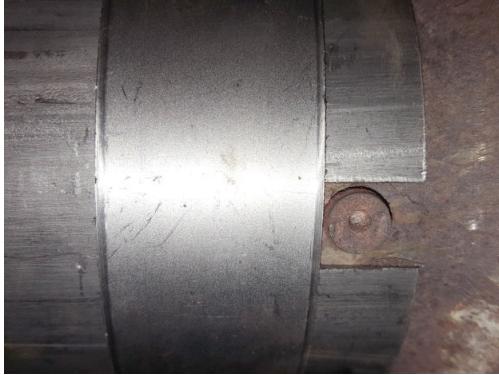
- Remove nuts from stock and Flowmaster clamps, apply anti-seize compound to bolts and re-install nuts.

NOTE: The image in this step is intended for illustrative purposes only and may or may not accurately reflect components included in your kit.

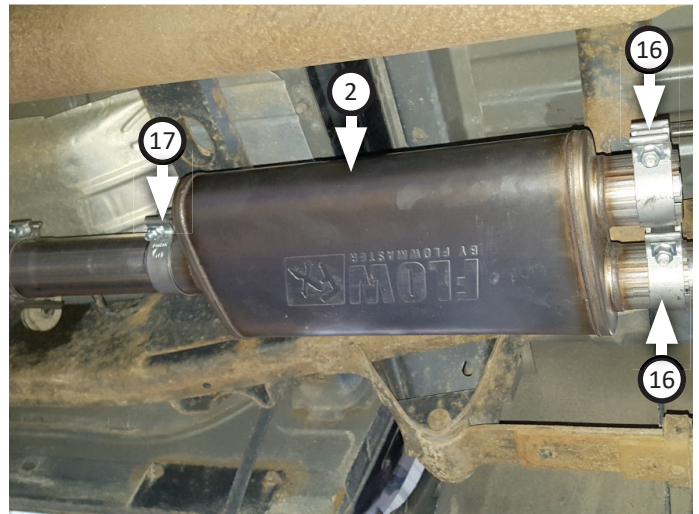
- Every slip fit connection in this kit must seat 3" deep except for front muffler connection which must seat 2" deep and rear muffler connections which must seat 1¾" deep. Find all slip fit components in your kit and mark them accordingly so your Flowmaster exhaust system fits properly onto your vehicle.



7. Place **clamp hanger (8)** to **inlet pipe (1)** then connect it to front pipe; lining inlet pipe notch up to front pipe tab. Insert wire hanger in isolator and tighten clamp enough to allow for adjustment.



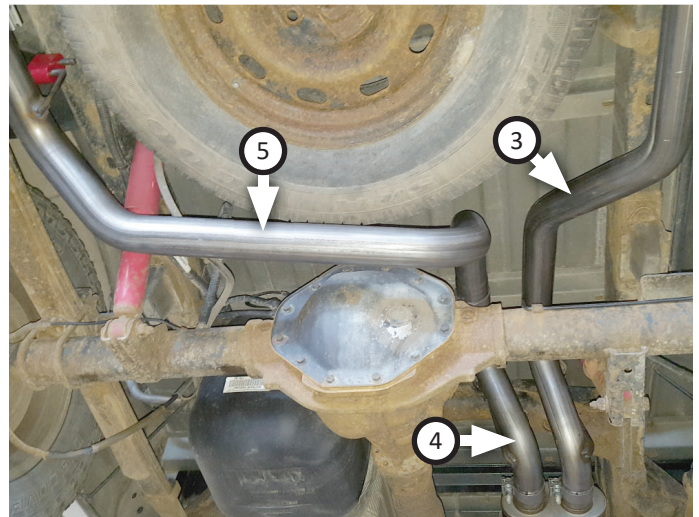
8. Place **clamp (17)** onto **muffler (2)** then connect it to inlet pipe. Tighten clamp just enough to allow for adjustment then place (x2) **clamps (16)** onto muffler outlets.



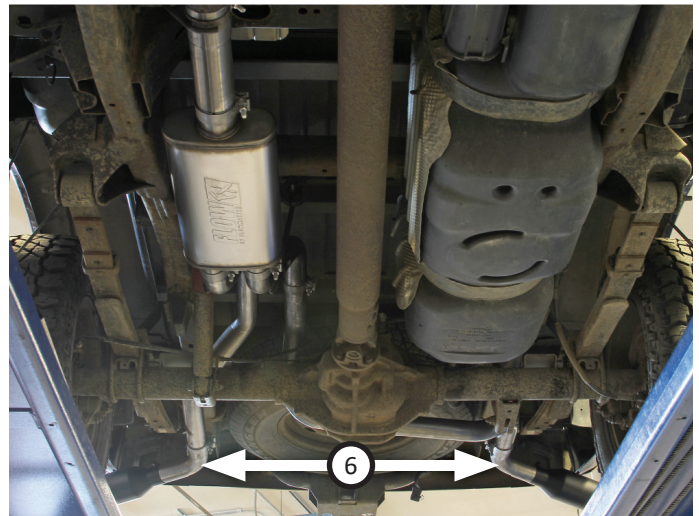
9. Fasten **frame hanger (9)** to driver side vehicle frame next to spare tire with **bolt (12)**, (x2) **backing plates (11)**, (x2) **flat washers (13)**, **lock washer (14)** and **nut (15)**. Then hang **rubber hanger (10)** on frame hanger.



10. Route **left front (4)** and **right tailpipes (3)** over axle then connect them to muffler. Insert wire hangers into isolators then tighten clamps just enough to hold parts.
11. Place **clamp (16)** onto **left rear tailpipe (5)** then connect it to left front tailpipe. Insert wire hanger into rubber hanger then tighten clamp enough to hold parts.



12. Place (x2 ea.) **clamps (16)** onto **side exit pipe (6)** and connect them to tailpipes; tighten clamps to hold parts.
13. Place (x2) **tips (7)** onto side exit pipes and tighten inlets. Rotate exit pipes and tips to desired distance from body or bumper, so angle cut on tips are properly positioned.
14. Adjust exhaust components for fit; maintaining $\frac{1}{2}$ " clearance and compensating for suspension, travel and vibration then tighten all clamps. Finally, fit (x2) **hanger keepers (18)** onto each sideways hanger.
15. Recommended: Secure slip-fit connections with a 1-inch tack weld then spray high-temp paint over each weld to prevent rust and premature corrosion.



Congratulations, the installation of your FLOWMASTER performance exhaust system is now complete!





Installation Diagram
717995
2006-08 DODGE RAM 1500
5.7L ENGINE

