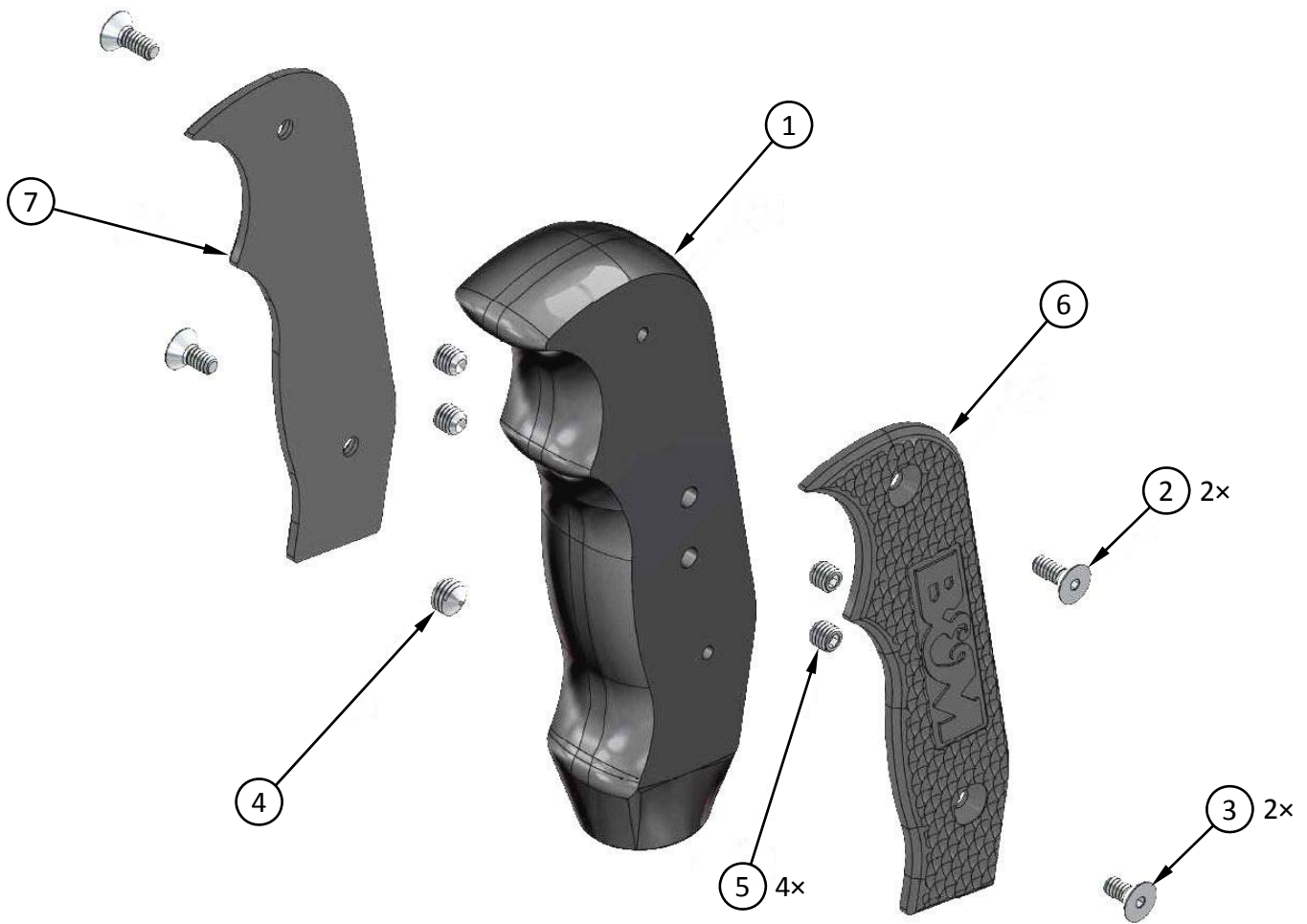




Installation Instructions for  
**MAGNUM GRIP SHIFTER HANDLE**  
for 2016-2017 YAMAHA YXZ1000R  
Catalog No. (Grip Color): 81097 (Black);  
81128 (Blue); 81129 (Green); 81130 (Orange);  
81131 (Red); 81132 (White); 81133 (Yellow)



REFER TO PARTS LIST ON NEXT PAGE



**Installation Instructions for**  
**MAGNUM GRIP SHIFTER HANDLE**  
**for 2016-2017 YAMAHA YXZ1000R**  
**Catalog No. (Grip Color): 81097 (Black);**  
**81128 (Blue); 81129 (Green); 81130 (Orange);**  
**81131 (Red); 81132 (White); 81133 (Yellow)**

**PARTS LIST**

ITEM NO.	PART NO.	DESCRIPTION	QTY.
1	4001722-88	MAGNUM GRIP SHIFTER HANDLE BODY, 2016-2017 YAMAHA YXZ1000	1
2	3401294-00	SCREW, SOCKET, FLAT HEAD, 6-32 × 3/8", STAINLESS	2
3	3401537-00	SCREW, SOCKET, FLAT HEAD, 6-32 × 5/16", STAINLESS	2
4	3401544-00	SET SCREW, CONE POINT, 1/4-28 × 3/16", 18-8 SS	1
5	3401545-00	SET SCREW, CUP POINT, 10-32 × 3/16", 18-8 SS	4
6	4001492-88	MAGNUM GRIP SHIFTER PLATE, LEFT, DIAMOND KNURL – BLACK	1
	4001724-88	" " " " " " " " – BLUE	
	4001732-88	" " " " " " " " – GREEN	
	4001730-88	" " " " " " " " – ORANGE	
	4001726-88	" " " " " " " " – RED	
	4001734-88	" " " " " " " " – WHITE	
	4001728-88	" " " " " " " " – YELLOW	
7	4001495-88	MAGNUM GRIP SHIFTER PLATE, RIGHT, DIAMOND KNURL – BLACK	1
	4001725-88	" " " " " " " " – BLUE	
	4001733-88	" " " " " " " " – GREEN	
	4001731-88	" " " " " " " " – ORANGE	
	4001727-88	" " " " " " " " – RED	
	4001735-88	" " " " " " " " – WHITE	
	4001729-88	" " " " " " " " – YELLOW	

**Before starting**, take a moment to read and understand these instructions for your B&M Magnum Grip Shifter Handle. Use the parts drawing and list to verify your kit's contents. In the unlikely event of missing parts, please contact B&M Technical Support for replacements.

**We highly recommend that you retain all factory parts.**



1. **Turn off your vehicle's ignition and set the parking brake.** Remove the fastener from the right side of the shifter handle.



2. Pull the shifter handle off the shifter lever.



3. Thread the 4 small set screws (Item 5) about halfway into the shifter handle body (1) (two screws each side). Thread the large set screw (4) about halfway into the right side of the shifter handle body.



4. Slide the shifter handle body all the way onto the shifter lever.



5. Tighten all 5 set screws to secure the shifter handle to the shifter lever.



6. Install the left and right side plates (6) and (7) with the 2 long flathead screws (2) in the top holes, and the 2 short flathead screws (3) in the bottom holes.

**Congratulations, the installation of your B&M Magnum Grip Shifter Handle is now complete!**