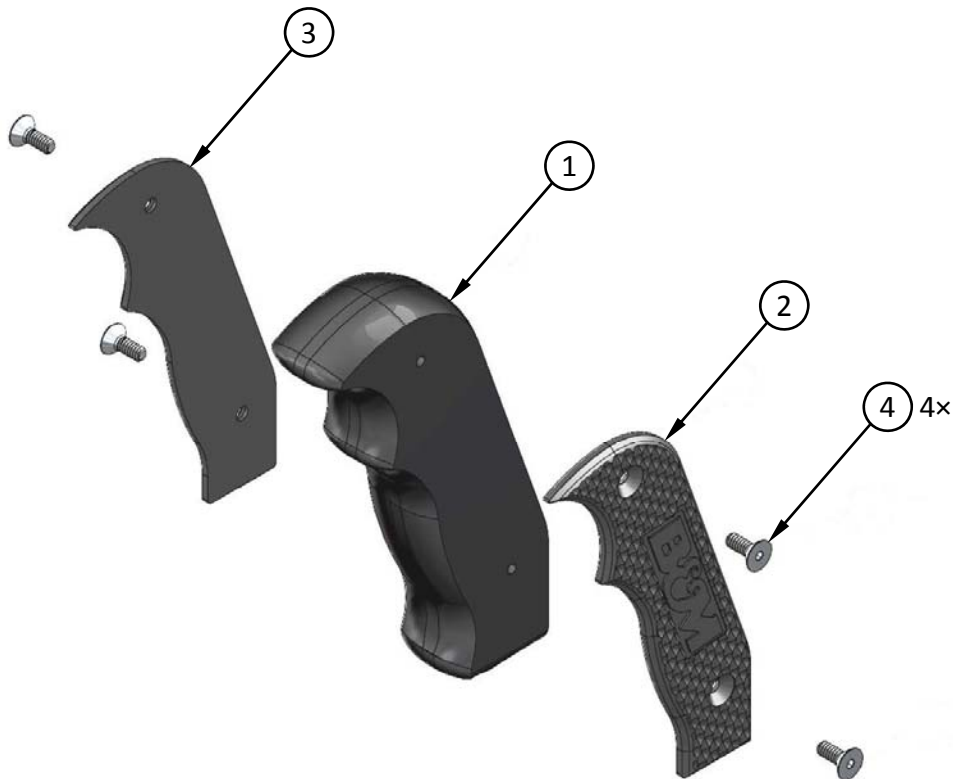




Installation Instructions for
**B&M MAGNUM GRIP
SHIFTER HANDLE**
for 2013-2018 CAN-AM MAVERICK
(NOT FOR X3 MAVERICKS)

Catalog No. (Grip Color): 81216 (Black);
81217 (Blue); 81218 (Green); 81219 (Orange);
81220 (Red); 81221 (White); 81222 (Yellow)



REFER TO PARTS LIST ON NEXT PAGE



**Installation Instructions for
B&M MAGNUM GRIP
SHIFTER HANDLE
for 2013-2018 CAN-AM MAVERICK
(NOT FOR X3 MAVERICKS)**

Catalog No. (Grip Color): 81216 (Black);
81217 (Blue); 81218 (Green); 81219 (Orange);
81220 (Red); 81221 (White); 81222 (Yellow)

PARTS LIST

ITEM NO.	PART NO.	DESCRIPTION	QTY.
1	4001721	MAGNUM GRIP SHIFT HANDLE BODY, CAN-AM MAVERICK	1
2	4001492	MAGNUM GRIP SHIFTER PLATE, LEFT, DIAMOND KNURL – BLACK	1
	4001724	" " " " " " " " – BLUE	
	4001732	" " " " " " " " – GREEN	
	4001730	" " " " " " " " – ORANGE	
	4001726	" " " " " " " " – RED	
	4001734	" " " " " " " " – WHITE	
	4001728	" " " " " " " " – YELLOW	
3	4001495	MAGNUM GRIP SHIFTER PLATE, RIGHT, DIAMOND KNURL – BLACK	1
	4001725	" " " " " " " " – BLUE	
	4001733	" " " " " " " " – GREEN	
	4001731	" " " " " " " " – ORANGE	
	4001727	" " " " " " " " – RED	
	4001735	" " " " " " " " – WHITE	
	4001729	" " " " " " " " – YELLOW	
4	3401537	SCREW, SOCKET, FLAT HEAD, 6-32 × 5/16", STAINLESS	4

Before starting, take a moment to read and understand these instructions for your B&M Magnum Grip Shifter Handle. Use the parts drawing and list to verify your kit's contents. In the unlikely event of missing parts, please contact B&M Racing Technical Support for replacements. Direct all correspondence and warranty questions to:

B&M Racing
100 Stony Point Rd., Suite 125
Santa Rosa, CA 95401

We highly recommend that you retain all factory parts.

1. Turn off your vehicle's ignition and set the parking brake.



2. Loosen the jam nut under the stock shifter handle.



3. Unscrew the stock shifter handle from the shifter lever.



4. Screw the Magnum Grip Shifter Handle onto the shifter lever. (Avoid cross-threading.)



5. Hold the Magnum Grip Shifter Handle in the desired position and tighten the jam nut.



Congratulations, the installation of your new B&M Magnum Grip Shifter Handle is now complete!



- Customize your new Shifter Handle with B&M Magnum Grip Accessory Side Plates!
- Available in rosewood; billet aluminum (black or natural); and diamond knurl polycarbonate (seven colors).