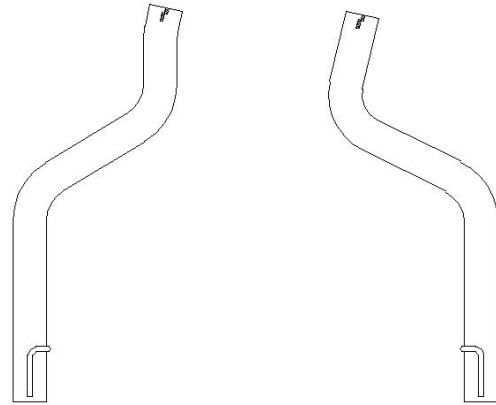




409S[®] Stainless Steel

**Installation Instructions for:
SYSTEM #817780
2017-2019 DODGE CHARGER R/T
5.7L · V8 HEMI ENGINE**

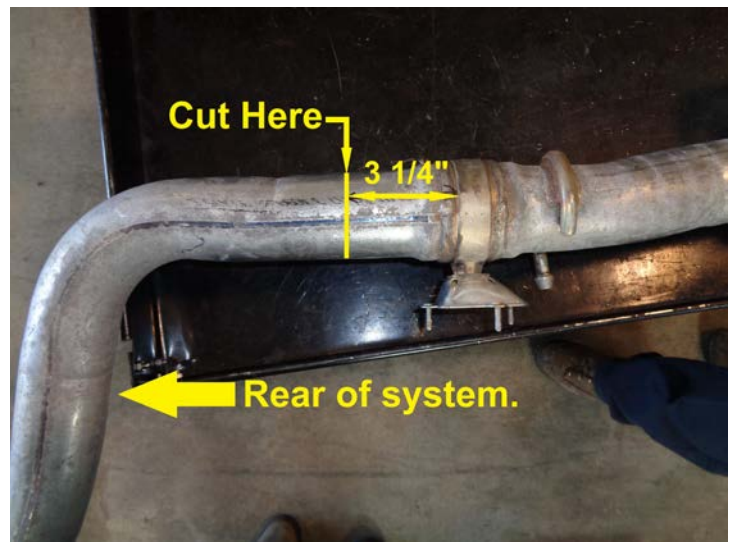
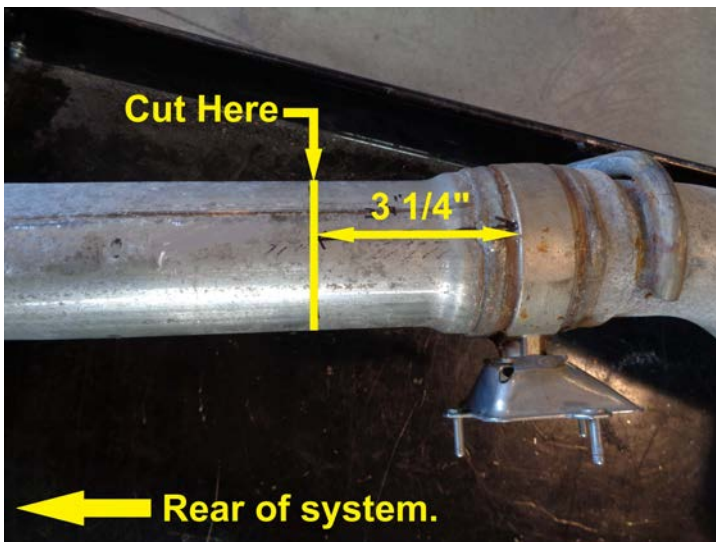
This kit only fits vehicles with integrated rear exhaust bezels; it does not fit vehicles with traditional bumper/tip cutouts



02/11/19

Removal:

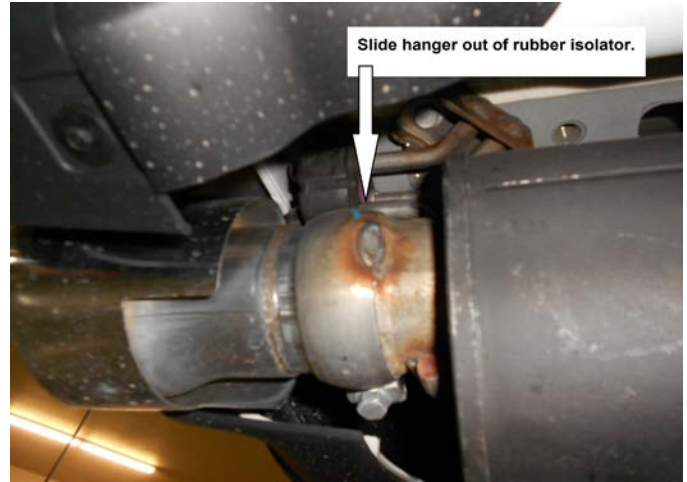
- 1) Raise the vehicle and support securely with stands. To ease the removal of the stock system, spray a penetrating lubricant onto the rubber hangers at the rear of the exhaust system.
- 2) Using the measurements and instructions on the diagrams below, carefully mark the factory tailpipes and then place a stand behind the area marked to support the front of the tailpipes once cut.
Note: The two illustrations below show the factory exhaust system out of the vehicle and turned over with the hangers down, however, the instructions that follow are designed to show the steps required to install your new Flowmaster tailpipes without removing the exhaust system from the vehicle.



On the passenger side of the system, Measure back 3 1/4" from the cast body of the exhaust valve and make a mark. Using a hacksaw or sawsall, cut the pipe through on this mark. After cutting, remove any burrs from the end of the pipe using a file or die grinder.

On the driver's side of the system, measure back 3 1/4" from the cast body of the exhaust valve and make a mark. Using a hacksaw or sawsall, cut the pipe through on this mark. After cutting, remove any burrs from the end of the pipe using a file or die grinder.

3) Unclip the grounding strap from the rear hanger on the right side of the vehicle then, lower the stands behind the cut area of each tailpipe. Slide the rear hanger on each tailpipe out of the rubber mount on the vehicle and lower the tailpipe from the vehicle.



Installation:

1) Place a 2 3/4" clamp onto the front of left tailpipe # **26662S**, then slide onto the back of the exhaust valve. Connect the hanger at the rear of the tailpipe to the rubber mount on the vehicle. Adjust the tailpipe to the desired position in the bumper exhaust bezel. Tighten the clamp enough to hold but still allow for adjustment.

2) Place a 2 3/4" clamp onto the front of right tailpipe # **26663S**, then slide onto the back of the exhaust valve. Connect the hanger at the rear of the tailpipe to the rubber mount on the vehicle. Adjust the tailpipe to the desired position in the bumper exhaust bezel. Tighten the clamp enough to hold but still allow for adjustment.





- 3) Adjust the position of the tailpipes to provide a satisfactory fit. A minimum of 1/2" clearance around all parts of the system must be maintained; while keeping suspension travel and vibration in mind. After adjustments have been made, you may now securely tighten all clamps. Also reconnect the grounding clip to the rear hanger on the right side tailpipe.
- 4) For a more secure installation, we recommend welding all slip-fit connections.

PACKING LIST

<u>Qty</u>	<u>Description</u>	<u>Part#</u>
1	Left Tailpipe Assembly	26662S
1	Right Tailpipe Assembly	26663S
1	Hardware Kit	PK891
2	2-3/4" Clamp	MC234BS