



OUTLAW S E R I E S

Installation Instructions

817916

2014-19* GM SILVERADO/SIERRA 1500
4.3L & 5.3L ENGINE

2/4 Wheel Drive, 143.5" & 153" Wheelbases

*Classic body only, does NOT fit 2019 new body trucks.

OVERVIEW:

1. Take a moment to read and understand these instructions before installing your Flowmaster performance system.

NOTE: Please inventory all parts now before continuing and if necessary, report any missing items to our tech line. This will avoid potentially stranding your vehicle until any missing replacement parts arrive.

ITM #	PART #	DESCRIPTION	QTY.
1	815430-542	Outlaw Muffler	1
N/A	PK817	Hardware Package includes:	1
2	MC234BS	2¾" Stainless Band Clamp	1
3	HW502	¾" Hanger Keeper	2

REMOVE STOCK EXHAUST SYSTEM:

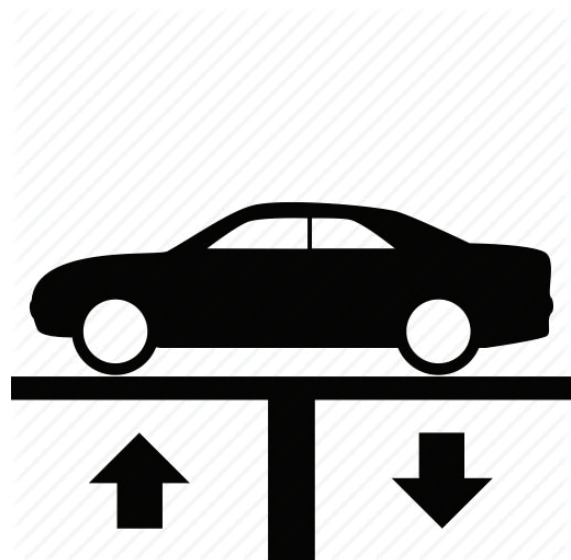
2. Raise vehicle up on a hoist or rack to working height. If you don't have access to a hoist or rack, support vehicle with jack stands.

WARNING:

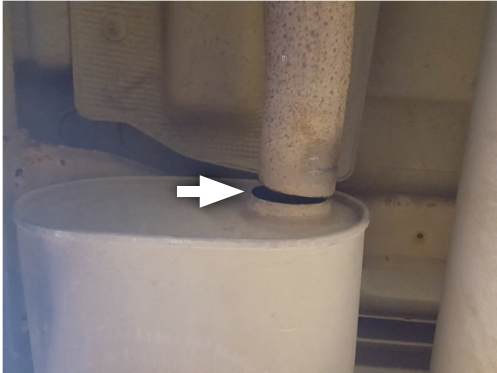
Avoid serious burns! Allow your vehicle time to cool completely before touching any factory engine components.

To ease preparation and installation of your new kit:

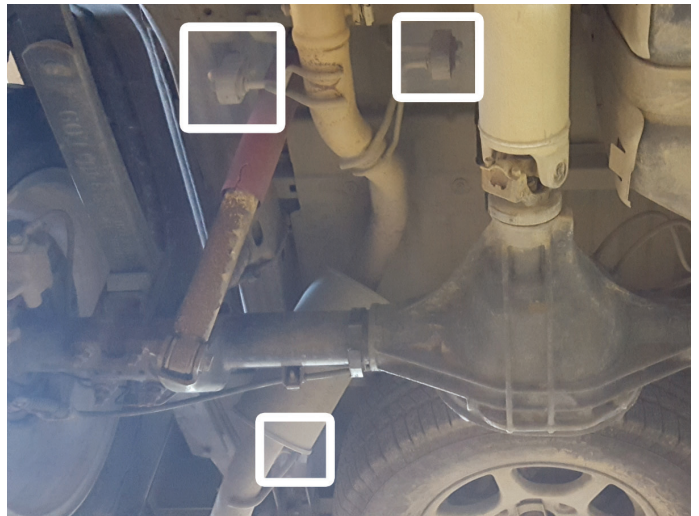
- Apply penetrating lubricant to mounts, bolts and clamps before you remove them.
- Use stands as necessary to support parts as you detach them from your vehicle and again as you install new parts.



- Cut inlet pipe at muffler inlet as shown for proper fitment of exhaust system. Then cut exhaust pipe at muffler exit and remove muffler from vehicle.



- Dismount wire hangers (x3) from isolators and remove remaining tailpipe from vehicle.



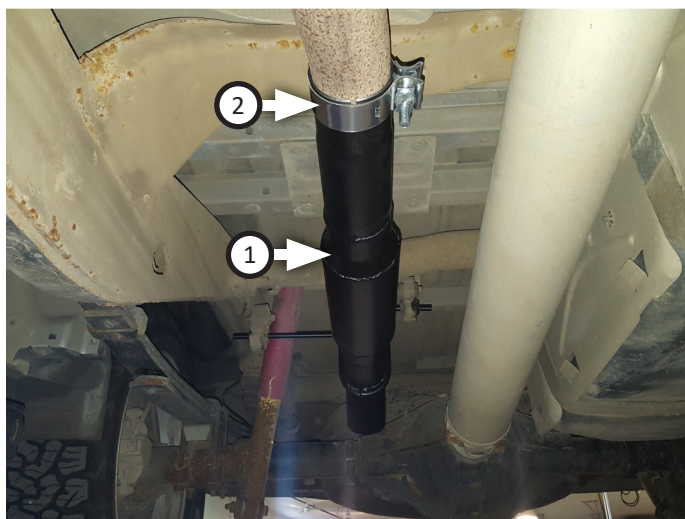
INSTALL FLOWMASTER EXHAUST SYSTEM

- Remove nuts from stock and Flowmaster clamps, apply anti-seize compound to bolts and re-install nuts.

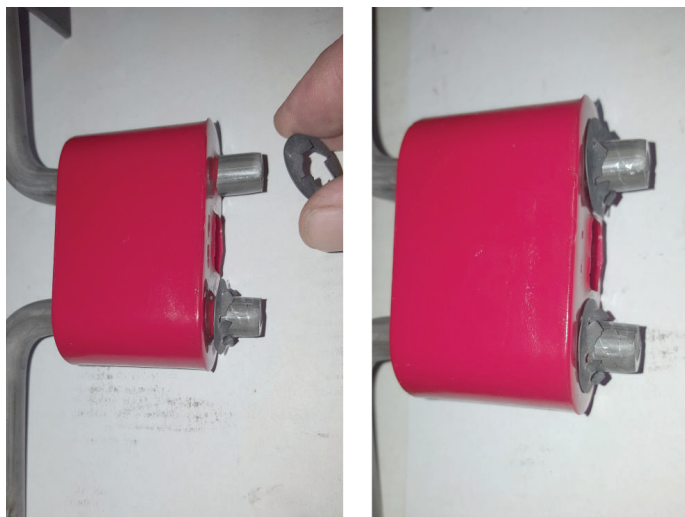
NOTE: The image in this step is intended for illustrative purposes only and may or may not accurately reflect components included in your kit.



6. Place **clamp (2)** onto **OTL muffler (1)** then hang it in isolators. Connect inlet to pipe and tighten clamp just enough to allow for adjustment.



7. Adjust muffler so wire hangers protrude approximately $\frac{3}{4}$ " through rubber hangers then tighten clamp securely.
8. Secure exhaust system by fitting (x2) **hanger keepers (3)** onto each wire hanger that runs perpendicular to your vehicles axle.
9. We recommend applying a one inch tack weld to all slip-fit connections for a more secure installation. You may also apply high temperature paint over welded areas to prevent rust and premature corrosion.



Congratulations, the installation of your FLOWMASTER performance exhaust system is now complete!





OUTLAW

S E R I E S

Installation Diagram

817916

2014-19* GM SILVERADO/SIERRA 1500

4.3L & 5.3L ENGINE

2/4 Wheel Drive, 143.5" & 153" Wheelbases

*Classic body only, does NOT fit 2019 new body trucks.

