



## QFT™ 230 & 260 FUEL PUMP REBUILD KITS P/N 30-7300

1. Remove (4) assembly fasteners, mounting bracket, lower wear plate, rotor, o-ring, eccentric bushing, upper wear plate, and bypass valve assembly.
2. Disassemble the bypass valve and examine for debris and smooth movement of the piston.
3. Replace the internal and external o-rings.
4. Place the new upper wear plate in the pump body positioned around the existing alignment pin.
5. Install the eccentric bushing to position on the same alignment pin and against the upper wear plate.
6. Install the rotor on the shaft with the counter bore facing out.
7. Install the vanes into each slot in the rotor.
8. Install the new o-ring.
9. Position the new lower wear plate and torque the (4) screws to 20 -30 in./lbs.

### 30-7305 (QFT™ 230 & 260 Body Kit) INSTALLATION:

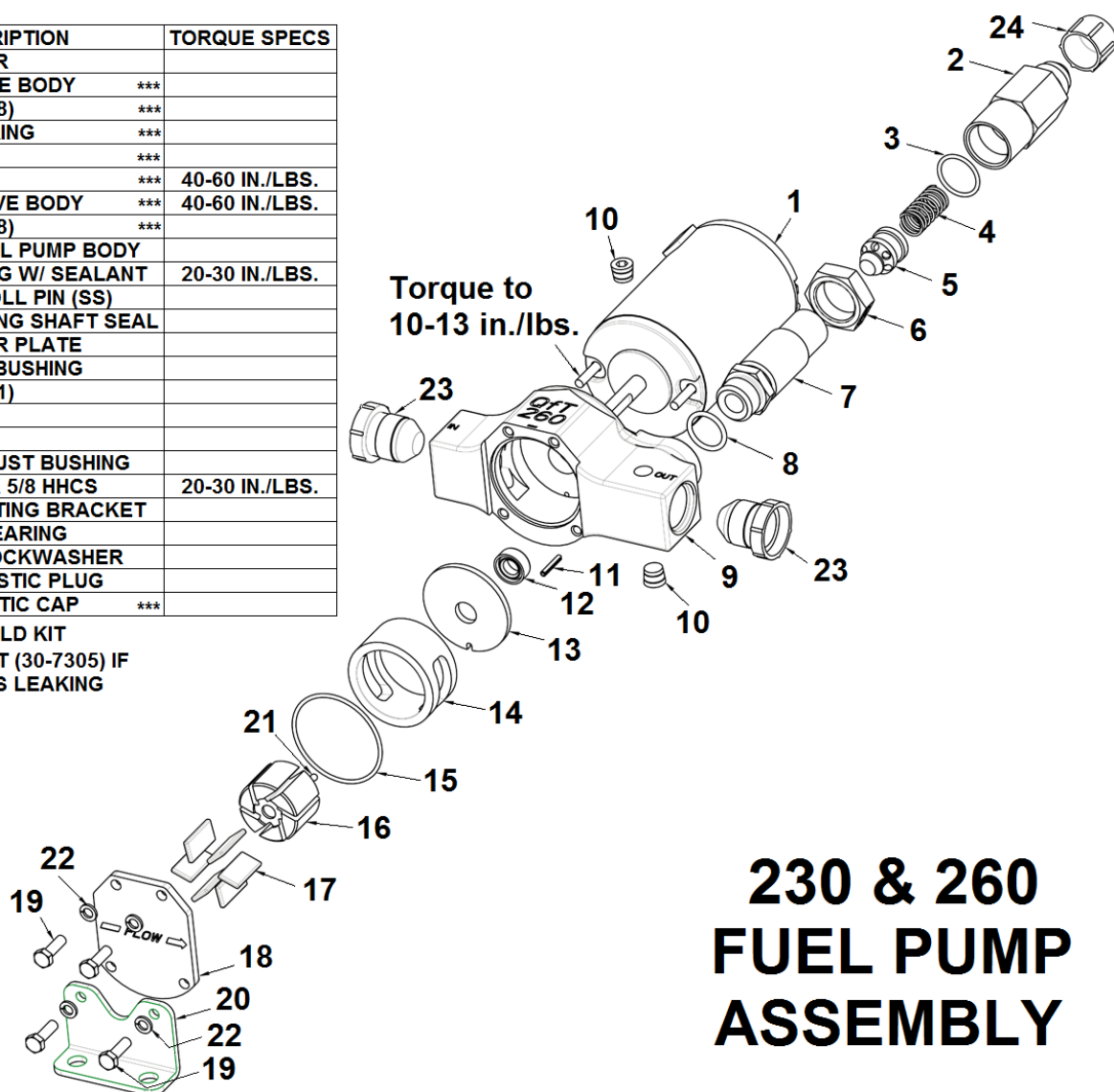
1. Remove (2) motor screws and slide motor out. **CAUTION! HOLD MOTOR END CAPS AGAINST MOTOR HOUSING DURING AND AFTER SEPARATION.**
2. Carefully insert motor shaft through new fuel pump body assembly.
3. Torque the (2) screws to 10-13 in./lbs.

ITEM	QTY	PART DESCRIPTION	TORQUE SPECS
1	1	PUMP MOTOR	
2	1	UPPER VALVE BODY ***	
3*	1	O-RING (2-018) ***	
4	1	POPPET SPRING ***	
5	1	POPPET ***	
6	1	HEX NUT ***	40-60 IN./LBS.
7	1	LOWER VALVE BODY ***	40-60 IN./LBS.
8*	1	O-RING (3-908) ***	
9**	1	260 GPH FUEL PUMP BODY	
10	2	1/8 PIPE PLUG W/ SEALANT	20-30 IN./LBS.
11	1	3/32 X 5/8 ROLL PIN (SS)	
12	1	PUMP HOUSING SHAFT SEAL	
13*	1	UPPER WEAR PLATE	
14*	1	ECCENTRIC BUSHING	
15*	1	O-RING (2-031)	
16*	1	ROTOR	
17*	6	VANE	
18*	1	LOWER THRUST BUSHING	
19	4	#10-32 UNF X 5/8 HHCS	20-30 IN./LBS.
20	1	PUMP MOUNTING BRACKET	
21	1	1/8" BALL BEARING	
22	4	#10 SPLIT LOCKWASHER	
23	2	-10 RED PLASTIC PLUG	
24	1	-8 RED PLASTIC CAP ***	

\* COMPONENTS IN REBUILD KIT

\*\* ORDER BODY ASSY KIT (30-7305) IF  
MOTOR SHAFT SEAL IS LEAKING

\*\*\* 260 PRO PUMP ONLY



## 230 & 260 FUEL PUMP ASSEMBLY

Figure 1

Quick Fuel Technical Support: 1-270-781-9741  
For warranty information, please see our website at [www.holley.com](http://www.holley.com).