



## QFT™ 230 & 260 FUEL PUMP REBUILD KITS P/N 30-7313QFT

### To rebuild pumping assembly without motor shaft seal replacement:

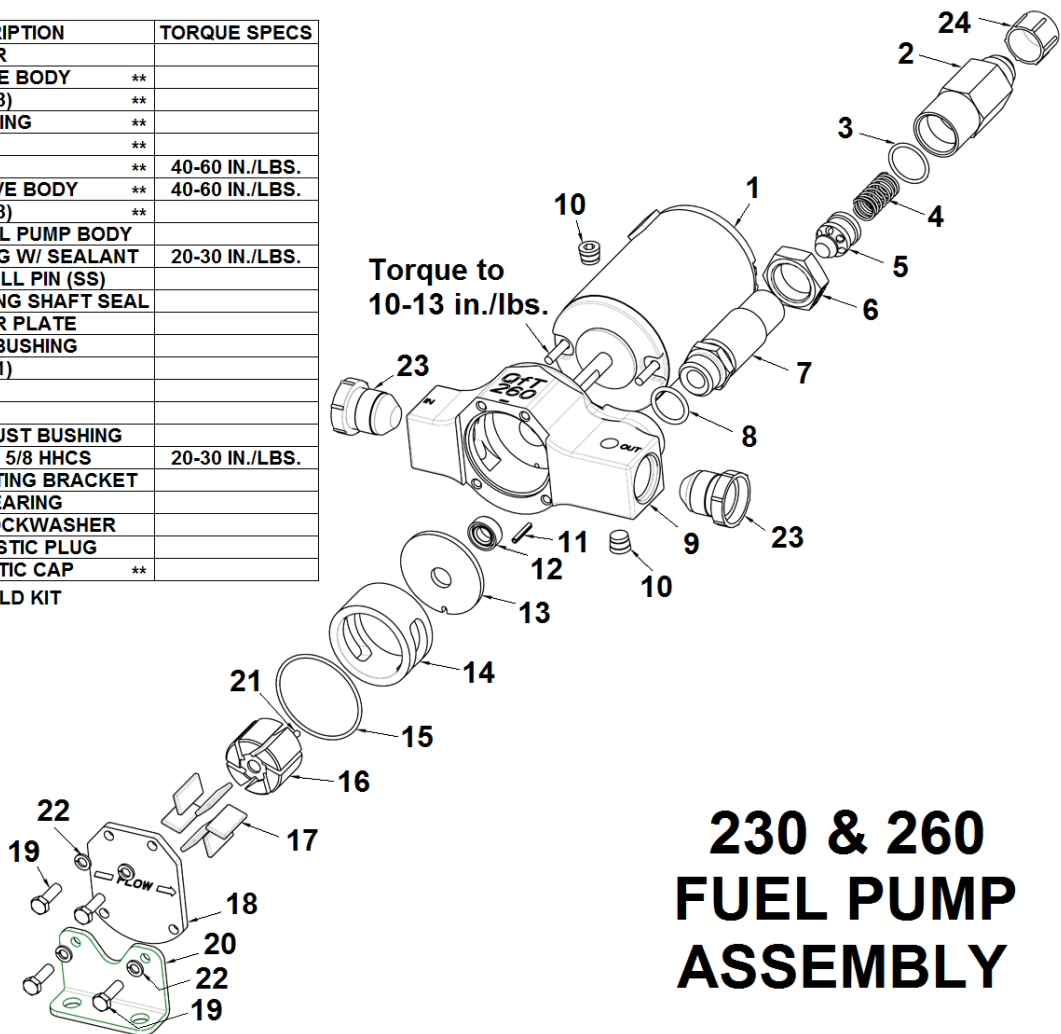
1. Remove (4) assembly fasteners, mounting bracket, lower wear plate, rotor, o-ring, eccentric bushing, upper wear plate, and bypass valve assembly.
2. Disassemble the bypass valve and examine for debris and smooth movement of the piston.
3. Replace the internal and external O-rings.
4. Place the new upper wear plate in the pump body positioned around the existing alignment pin.
5. Install the eccentric bushing to position on the same alignment pin and against the upper wear plate.
6. Install the rotor on the shaft with the counter bore facing out.
7. Install the vanes into each slot in the rotor.
8. Install the new O-ring.
9. Position the new lower wear plate and torque the (4) screws to 20 -30 in./lbs.

### To replace motor shaft seal:

1. Remove the pumping assembly by removing (x4) 10-32 screws on bottom of pump (#19). Slide components out
2. Remove (x2) motor screws and slide motor out. **CAUTION! HOLD MOTOR END CAPS AGAINST MOTOR HOUSING DURING AND AFTER SEPARATION.**
3. Remove old shaft seal with new replacement.
4. Reinstall motor, torque the (x2) screws to 10-13 in./lbs. Reinstall pumping assembly torque the (x4) screws to 20 -30 in./lbs.

ITEM	QTY	PART DESCRIPTION	TORQUE SPECS
1	1	PUMP MOTOR	
2	1	UPPER VALVE BODY **	
3*	1	O-RING (2-018)	**
4	1	POPPET SPRING **	
5	1	POPPET **	
6	1	HEX NUT **	40-60 IN./LBS.
7	1	LOWER VALVE BODY **	40-60 IN./LBS.
8*	1	O-RING (3-908)	**
9	1	260 GPH FUEL PUMP BODY	
10	2	1/8 PIPE PLUG W/ SEALANT	20-30 IN./LBS.
11	1	3/32 X 5/8 ROLL PIN (SS)	
12*	1	PUMP HOUSING SHAFT SEAL	
13*	1	UPPER WEAR PLATE	
14*	1	ECCENTRIC BUSHING	
15*	1	O-RING (2-031)	
16*	1	ROTOR	
17*	6	VANE	
18*	1	LOWER THRUST BUSHING	
19	4	#10-32 UNF X 5/8 HHCS	20-30 IN./LBS.
20	1	PUMP MOUNTING BRACKET	
21	1	1/8" BALL BEARING	
22	4	#10 SPLIT LOCKWASHER	
23	2	-10 RED PLASTIC PLUG	
24	1	-8 RED PLASTIC CAP **	**

\* COMPONENTS IN REBUILD KIT  
\*\* 260 PRO PUMP ONLY



# 230 & 260 FUEL PUMP ASSEMBLY

Figure 1

Quick Fuel Technical Support: 866-464-6553

For warranty information, please see our website at [www.quickfueltechnology.com](http://www.quickfueltechnology.com).

99-30-7300

Revision Date: 5-18-20