



QFT™ 300 FUEL PUMP REBUILD KIT P/N 30-7301

1. Remove (3) assembly fasteners, lower wear plate, rotor, o-ring, eccentric bushing, upper wear plate, bypass plug, valve spring, and piston.
2. Place the new upper wear plate in the pump body positioned around the existing alignment pin.
3. Install the eccentric bushing to position on the same alignment pin.
4. Install the rotor on the shaft with the counter bore facing out.
5. Install the vanes into each slot in the rotor.
6. Install the new o-ring.
7. Position the new lower wear plate and torque the (3) screws to 40 -60 in./lbs.
8. Install the new piston, new spring, and o-ring on the bypass plug.
9. Torque the bypass plug to 40-60 in./lbs.

30-7306 (QFT 300 Body Kit) INSTALLATION:

1. Remove (2) motor screws and slide motor out. **CAUTION! HOLD MOTOR END CAPS AGAINST MOTOR HOUSING DURING AND AFTER SEPARATION.**
2. Carefully insert motor shaft through new fuel pump body assembly.
3. Torque the (2) screws to 15-20 in./lbs.

ITEM	QTY	PART DESCRIPTION	TORQUE SPECS
1	1	PUMP MOTOR	
2	1	BYPASS PISTON	
3	1	BYPASS PISTON SPRING	
4	1	O-RING (3-906)	
5	1	BYPASS PLUG	40-60 IN./LBS.
6	1	300 GPH FUEL PUMP BODY	
7	1	PLUG	PRESS FLUSH
8*	1	1/8 PIPE PLUG W/ SEALANT	20-30 IN./LBS.
9*	1	3/32 X 5/8 ROLL PIN (SS)	
10*	1	PUMP HOUSING SHAFT SEAL	
11*	1	UPPER WEAR PLATE	
12*	1	ECCENTRIC BUSHING	
13*	1	O-RING (-031)	
14*	1	ROTOR	
15	6	VANE	
16	1	LOWER WEAR PLATE	
17	3	1/4-20 X .75 HHCS	40-60 IN./LBS.
18	1	PUMP MOUNTING BRACKET	
19	1	1/8" BALL BEARING	
20	3	1/4" SPLIT LOCKWASHER	
21	2	#10 RED PLASTIC PLUG	

* COMPONENTS IN REBUILD KIT

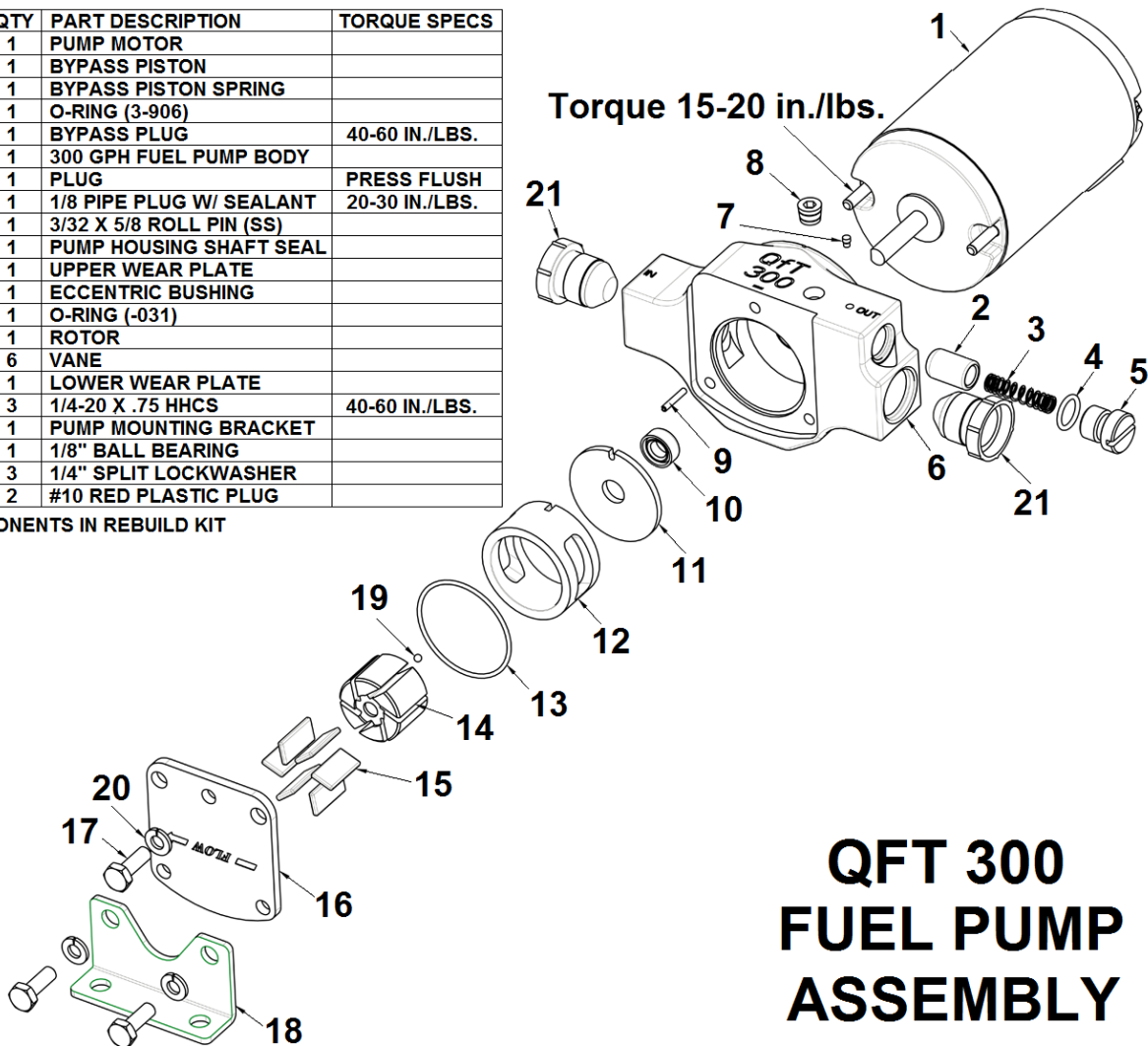


Figure 1

Quick Fuel Technical Support: 1-270-793-0900

For warranty information, please see our website at www.quickfueltechnology.com.