



**Detroit Speed**  
**Adjustable Rear Lower Control Arms**  
**2010-15 Camaro**  
**P/N: 042304DS**

Improve the handling and performance of your 2010-15 Camaro with Detroit Speed's adjustable rear lower control arms. These lower control arms are boxed and constructed from HSLA steel making them significantly stronger than the stock stamped steel arms. They are equipped with high durometer polyurethane bushings instead of the stock, soft rubber bushings to reduce suspension deflection resulting in improved handling, traction, and performance from the rear suspension system. Adjustability allows the factory eccentric adjuster (which is prone to slipping and causing unwanted changes to alignment settings) to be eliminated using the provided eccentric eliminator washers. These arms are a direct replacement for FE4/FE5 (2012-15 SS & ZL1) equipped vehicles or can be used in conjunction with our FE4/FE5 style rear sway bar (P/N: 042221DS) to upgrade vehicles originally equipped with other suspension packages.



Figure 1

Item #	Description	Quantity
1	Adjustable Rear Lower Control Arm	2
2	Toe Link Eccentric Eliminator Washer	4
3	Ride Height Sensor Bracket	2
4	1/4"-28 x 1/2" L Hex Head Bolt	4
5	Instructions	1

## Installation Instructions:

1. Safely raise and support the vehicle.
2. Remove the rear tire and wheel assemblies.
3. Support the rear knuckles with a jack.
4. Remove the rear sway bar end link assemblies from the lower control arms.
5. Remove the rear lower shock absorber bolts from the lower control arms.
6. Remove the inboard and outboard lower control arm nuts, washers and bolts. Remove the lower control arms from the vehicle.
7. Knock the eccentric washers off of the inboard adjuster bolts using a socket or a piece of tubing and a hammer (Figure 2). None of the eccentric washers will be reused including the ones that were under the inboard mounting nuts.

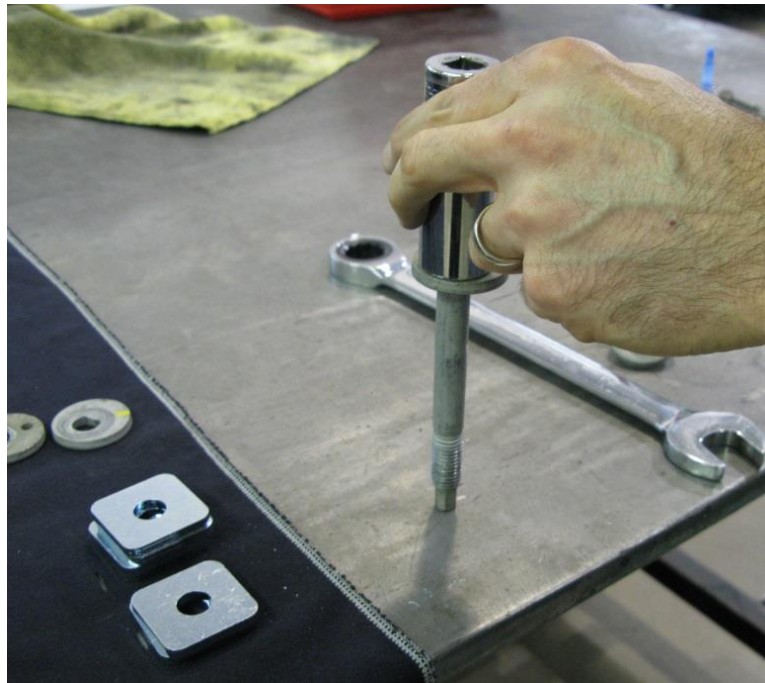


Figure 2

8. Using a hammer and socket or a piece of tubing tap the provided eccentric eliminator washers onto the original inboard adjuster bolts. They can also be installed using a press. Seat the bolt head fully in the washer face.
9. Install the new DSE rear lower control arms into the vehicle; the arms come pre-adjusted to the stock control arm length. **NOTE:** If your vehicle came equipped with ride height sensors, install the provided ride height sensor brackets and the 1/4"-28 x 1/2" L hex head bolts onto the DSE lower control arms. Install the ride height sensor to the bracket once the lower control arms are installed.
10. Install the original inboard adjuster bolts with the newly installed eccentric eliminator washers through the rear crossmember and lower control arm crush sleeve. Place the remaining eccentric eliminator washers on the inboard bolts, and then install the original inboard nuts. Install the original outboard bolts and nuts through the rear suspension knuckles.

11. Tighten the inboard rear lower control arm bolts to 85 ft-lb (115 N-m).
12. Tighten the outboard rear lower control arm bolts to 30 ft-lb (40 N-m), and then rotate the bolts an additional 120°.
13. Install the lower shock absorber bolts into the control arms and torque the bolts to 59 ft-lb (80 N-m), and then rotate the bolts an additional 120°.
14. Reinstall the sway bar end link assemblies to the lower control arm and torque to 19 ft-lb (26 N-m). **NOTE:** If you have a 2010-11 Camaro, use the endlink assemblies provided in the Detroit Speed sway bar kit (P/N: 042221DS).
15. Reinstall the rear wheel and tire assemblies. Refer to the factory service manual for proper wheel torque.
16. Lower the vehicle.
17. It will be necessary to check and adjust the rear wheel alignment. Camber alignment adjustments are now made by loosening the two jam nuts on the control arm and turning the adjuster. Retorque the smaller jam nut to a minimum of 200 ft-lb (271 N-m) and the larger jam nut to 250 ft-lb (339 N-m) once the desired alignment settings have been achieved. **NOTE:** The smaller jam nut is a right hand thread however the large jam nut is a left hand thread.

If you have any questions before or during the installation of this product, please contact Detroit Speed at [tech@detroitsspeed.com](mailto:tech@detroitsspeed.com) or 704.662.3272

**Legal Disclaimer:** *Detroit Speed is not liable for personal, property, legal, or financial damages from the use or misuse of any product we sell. The purchaser is solely responsible for the safety and performance of these products. No warranty is expressed or implied.*