

**Detroit Speed
Selecta-Speed Wiper Kit
1964-66 C10 Trucks
P/N: 121631**

A downpour of rain will no longer hinder your ability to clearly see the road. The Detroit Speed Selecta-Speed Wiper Kit provides you with the performance and convenience of a late model wiper system in a package that easily and cleanly mounts in your 1964-66 C10 Truck.



Item	Part Description	Quantity
1	Wiper Motor Assembly w/Adapter Plate	1
2	Wiper Control Module w/Mounting Plate	1
3	Wiper Harness	1
4	Wiper Switch Assembly	1
5	Billet Aluminum Wiper Switch Knob	1
6	Threaded Adapter	1
8	Wiper Switch Spacer	1
9	10-24 x 5/8" L Button Head Cap Screw	3
10	1/4"-28 Serrated Flange Nut	1
11	Instructions	1

This kit features a seven-speed wiper system with five delays, low speed, and high speed. A CNC aluminum adapter plate mounts the new wiper motor to the stock firewall bolt pattern under the dash. The new pitman arm, included in the kit, connects directly to your existing wiper linkage. A rotary switch is also included, along with a complete wiring harness.

This kit does feature a washer pump option as the wiper switch does have a push button function. The wiring harness/control module is equipped with a power and ground wire to install an inline electric washer pump. DSE does offer a washer pump kit available as part number 121102.

Installation Instructions:

1. Before beginning, please ensure that the parts included with your kit match the parts list above. Ensure that the factory wiper system is in its "Parked" position. Disconnect the battery power by removing the negative battery lead from the battery. Mark the position of the wiper arms by placing masking tape on the windshield. This will assure the arms are accurately replaced.
2. Remove the wiper arms, washer hoses and cowl panel from the vehicle [Figure 1].



Figure 1 - Remove Cowl Panel

3. Remove of the factory 1/4"-28 flange nut from the wiper motor pitman arm pin that is holding the linkage to the pitman arm. Remove the wiper linkage off the pitman arm pin [Figure 2]. **NOTE:** The flange nut holding the pitman arm to the wiper motor can stay on.

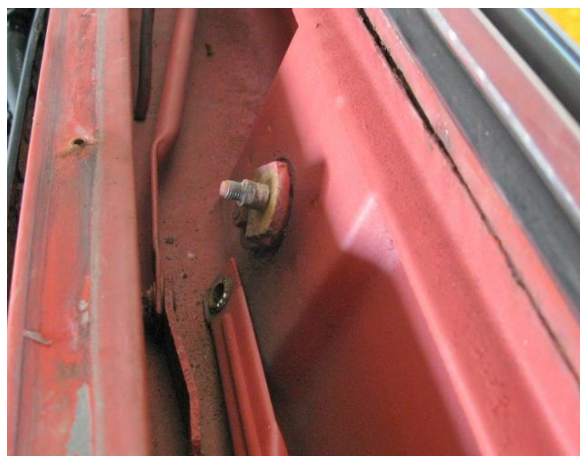


Figure 2 - Remove Wiper Linkage

4. Underneath the dash, disconnect the electrical connectors and washer hoses from the factory wiper motor (Figure 3).

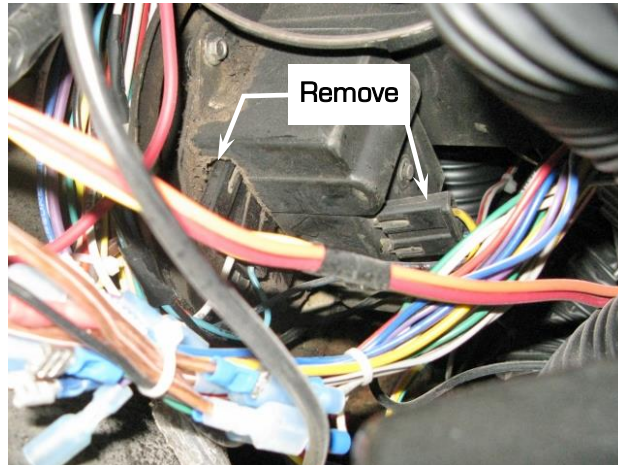


Figure 3 - Remove Electrical Connectors

5. Remove three screws holding the wiper motor to the firewall bracket and remove it from the vehicle (Figure 4). Remove any remaining gasket material from the stock mounting bracket. **NOTE:** If you have a Vintage Air unit installed, you will need to drop it down off the mounting brackets to gain access to the factory wiper motor (Figure 5).



Figure 4 - Remove Factory Wiper Motor



Figure 5 - Drop Vintage Air Unit

6. The original wiring will not be used with the new Selecta-Speed Wiper Kit. A custom harness is provided to replace the original. **NOTE: If you decide to cut the old wires please pay special attention to properly terminate the wire ends to avoid possible shorting.**
7. Mount the new wiper motor assembly to the firewall with the three provided 10-24 x 5/8" L button head cap screws. The adapter plate will mount to the firewall using the original wiper motor weld nuts in the firewall mounting bracket (Figure 5).



Figure 5 - Attach Wiper Motor to Firewall

8. Attach the new pitman arm to the original wiper linkage using the new provided 1/4"-28 serrated flange nut (Figure 6). Make sure the wiper linkage locks into the flats on the pitman arm stud. **NOTE: The Selecta-Speed kit is shipped with the pitman arm in the "parked" position.** Do not move the pitman arm by hand to attach the wiper linkage. If the pitman arm is moved from the original "parked" position from DSE, it may result in the wiper blades stopping in the wrong spot on the windshield.

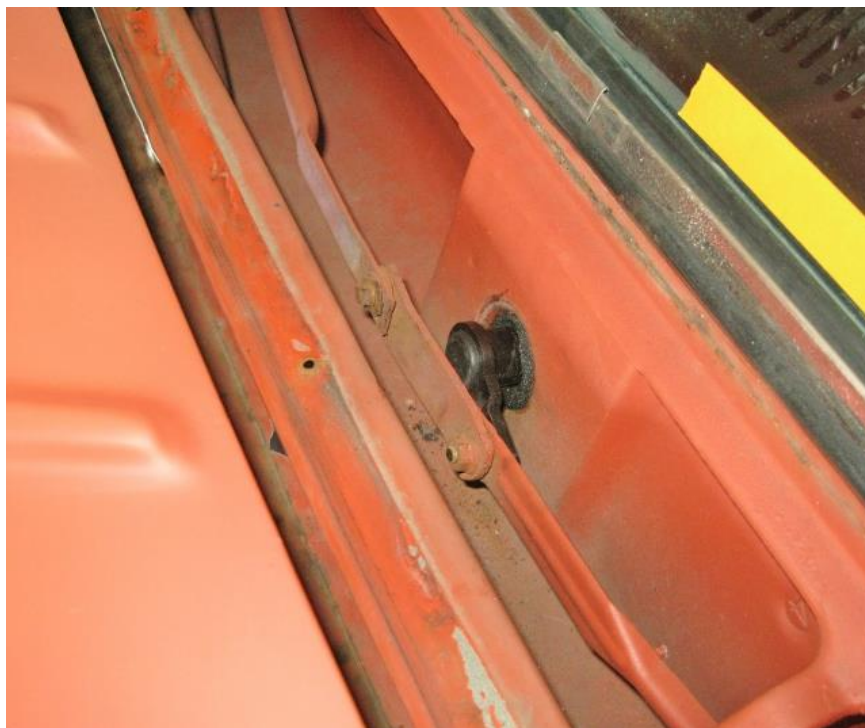


Figure 6 - Attach Pitman Arm to Wiper Linkage

9. The Selecta-Speed switch will replace the stock switch. Remove the factory wiper switch from the dash. First, remove the wiper knob from the switch using a flat blade screwdriver to remove the set screw (Figure 7). Then remove the switch bezel by threading it off the wiper switch. You will re-use the factory bezel with the DSE wiper switch.

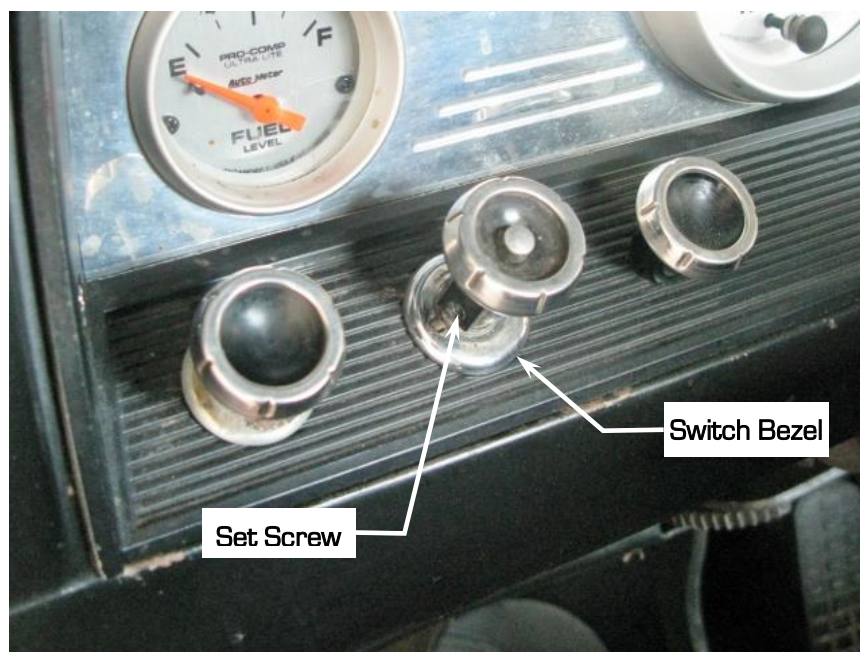


Figure 7 - Remove Factory Wiper Knob

10. Pull the switch out from underneath the dash and remove the electrical connector (Figure 8). Tie up the original wiring under the dash, if desired.

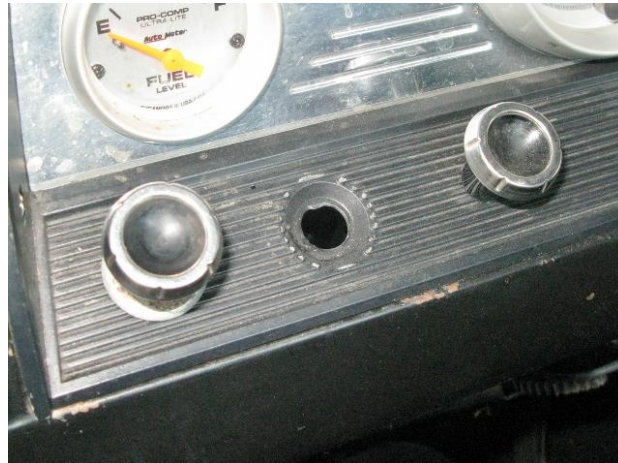


Figure 8 – Remove Factory Wiper Switch

11. Remove the hardware from the DSE wiper switch. Install the provided threaded adapter onto the wiper switch. Install the wiper switch spacer over the threaded adapter onto the wiper switch (Figure 9).



Figure 9 – Install Threaded Adapter & Spacer

12. Install the DSE wiper switch from underneath the dash. Line up the flat on the threaded adapter with the flat side of the wiper switch hole in the dash. Thread the factory switch bezel over the switch and onto the threaded adapter to hold it in place.
13. Install the DSE wiper knob onto the switch shaft. Align the set screw with the flat on the switch shaft and tighten. **NOTE:** Make sure the set screw locks onto the flat on the switch shaft.
14. Install the wiper motor connector side of the DSE wiring harness into the wiper motor (Figure 10).



Figure 10 – Install Wiper Motor Connector

15. The DSE Selecta-Speed harness does include a weatherpack connector to install an optional electric inline washer pump into your vehicle (Figure 11). DSE does offer a washer pump kit you can purchase separately as part number 121102.



Figure 11 - Washer Pump Connection

16. If you have purchased the Detroit Speed washer pump kit, use the instructions from that kit to complete the washer pump kit installation. If you do not want to use the washer pump feature, you can tie wrap this connector/loom up under the dash.
17. Install the wiper control module onto the module mounting plate using the provided 8-32 hardware if not already assembled from DSE. Do not overtighten.
18. Remove the lower left hand bolt from the bracket underneath the steering column. Loosen the other three bolts so that the bracket is loose enough to slide the module and mounting plate in between the steering column support and the bracket (Figure 12).



Figure 12 - Install Module & Mounting Plate

19. Re-install the bolt that was removed in the previous step into the bracket to hold the module in place. **NOTE:** The module connectors should be pointing away from the firewall however it can be changed to point towards the firewall if desired. Tighten the other three bolts that were loosened in the previous step.

20. With the wiper control module in place, plug in the wiper switch and wiring harness connectors into the control module (Figure 13).



Figure 13 – Connect Wiper Switch & Harness to Module

21. Connect the yellow wire under the dash to a 12V ignition or accessory switched source (Circuit is active when the key is in the run position). This lead is supplied with an inline 30 amp ATO fuse.
22. Connect the black wire with the round eyelet to a ground located under the dash. Make sure a proper ground is obtained by removing any rust or paint from the metal.
23. Connect the negative battery lead and test the wiper system. Upon a successful test, the wiper conversion is now complete. Secure the new wiring harness under the dash and in the engine compartment. Re-install the cowl panel and wiper arms along with any other component that had been removed. **NOTE:** If you have a Vintage Air unit, you can now bolt it back up to your brackets.

NOTE: In some cases, high energy ignition systems have caused interference with the correct operation of the Selecta-Speed Wiper Kit due to spark plug wires routed closely to the wiper motor. If this occurs, re-routing your spark plug wires may be necessary.

If you have any questions before or during the installation of this product, please contact Detroit Speed at tech@detroitsspeed.com or 704.662.3272

Legal Disclaimer: Detroit Speed is not liable for personal, property, legal, or financial damages from the use or misuse of any product we sell. The purchaser is solely responsible for the safety and performance of these products. No warranty is expressed or implied.