

Detroit Speed
Mustang Mini-Tub Kit/Stock Fuel Tank
1964.5-70 Mustang
P/N: 080126DS

The Detroit Speed Mini-Tub Fuel Tank is a stainless steel fuel tank designed for use with our Mustang Mini-Tub Kit as well as a stock application replacement fuel tank. It is a direct bolt-in using the original mounting location, it is pressure tested and TIG welded with a stainless steel construction. The fuel tank contains in-tank baffling and is available for fuel injected or carbureted engines and has a 16 gallon capacity. The top of the fuel tank has a provision for an in-tank fuel pump and sending unit (both sold separately).



Item	Part Description	Quantity
1	Stainless Steel Fuel Tank	1
2	Mini-Tub Fuel Tank Cut Template	1
3	Instructions	1

NOTES:

Below is a list of in-tank fuel pump, regulator and sending unit options offered from Detroit Speed:

- HOL 12-130 - 255 LPH In-Tank Fuel Module w/Hydramat (Up to 550 EFI or 700 Carb HP)
- HOL 12-880 - Adjustable Billet By-Pass Regulator -6AN
- HOL 12-888 - Holley EFI Diecast Filter Regulator 3/8" NPT
- 080201DS - 0-90 ohm Fuel Sending Unit
- 080206DS - 75-10 ohm Fuel Sending Unit (Ford Pre-1987)

1. To begin installation, raise the vehicle a few feet off the ground so the underside of the vehicle is accessible. Disconnect the battery cables.
2. If you have not already removed the factory gas tank during the Detroit Speed Mini-Tub Kit installation, remove the factory gas tank and fuel lines. **NOTE:** Make sure to eliminate all of the fuel vapors from the work area before continuing.
3. If you are using this fuel tank as a stock replacement tank, skip to **Step 5**. If this fuel tank is being installed with the Detroit Speed Mini-Tub Kit, you will need to use the provided template to notch the top plate of the fuel tank. Cut out the two shapes and follow the directions on the template.
4. Position the fuel tank with the backside down so it goes in underneath the Mini-Tub Kit Rear Support Tube and fits evenly around the trunk closeouts (Figure 1).

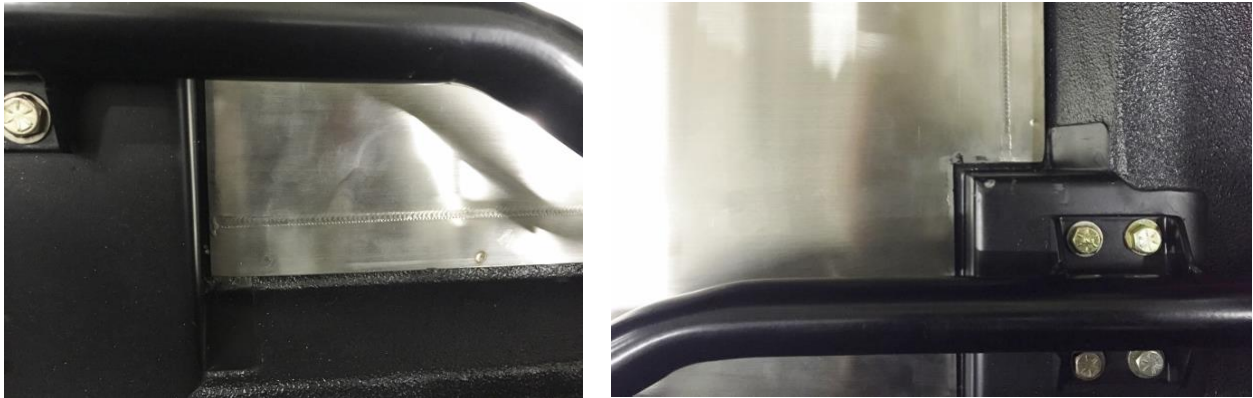


Figure 1 - Mini-Tub Kit Cut Out

5. Position the fuel tank in place, using the factory mounting holes from the original fuel tank, mark and center punch the Detroit Speed fuel tank from the bottom side of the vehicle (Figure 2). Remove the fuel tank and verify that the hole locations are evenly spaced on the fuel tank flange (Figure 3).



Figure 2 - Mark Mounting Holes



Figure 3 - Verify Hole Location

6. There will be twelve marked hole locations on the flange of the fuel tank that can now be drilled. **NOTE:** If you are using the hardware used for the factory fuel tank, drill the Detroit Speed fuel tank flange using a 3/16" drill size. Detroit Speed recommends using 1/4" hardware in which a final drill size of 17/64" will be used.
7. Before re-installing the fuel tank, now is a good time to install the sending unit (Figure4). Detroit Speed does offer different fuel sending units depending on your application. Refer to those instructions to install the sending unit. Use the provided O-ring screws to fasten the sending unit to the tank. **NOTE:** Detroit Speed recommends using a fuel resistant red silicone on the O-ring screws before they are installed. The bolts are tight when the O-rings on the bolts start to compress, do not overtighten.



Figure 4 – Sending Unit and Fuel Pump Opening

8. Install the in-tank fuel pump per the installation instructions provided with the fuel pump.
9. Re-install the Detroit Speed fuel tank and verify that the holes you have drilled from step 6 will line up with the holes in the trunk floor (Figure 5).



Figure 5 – Drilled Holes in Fuel Tank

10. Install the fuel tank to the trunk floor using hardware (Figure 6). **NOTE:** Detroit Speed does not provide hardware so you can choose the style bolt you want to use in your Mustang.



Figure 6 - Install Hardware

11. Once all the hardware is tight, install your fuel lines as well as any wiring you need for the sending unit and fuel pump if needed. Install the factory fuel neck to the tank. (Figure 7).



Figure 7 - Filler Neck

12. The installation is complete at this time (Figure 8).



Figure 8 - Finished Installation with Mini-Tub Kit

If you have any questions before or during the installation of this product, please contact Detroit Speed at sales@detroitsspeed.com or 704.662.3272

Legal Disclaimer: Detroit Speed is not liable for personal, property, legal, or financial damages from the use or misuse of any product we sell. The purchaser is solely responsible for the safety and performance of these products. No warranty is expressed or implied.