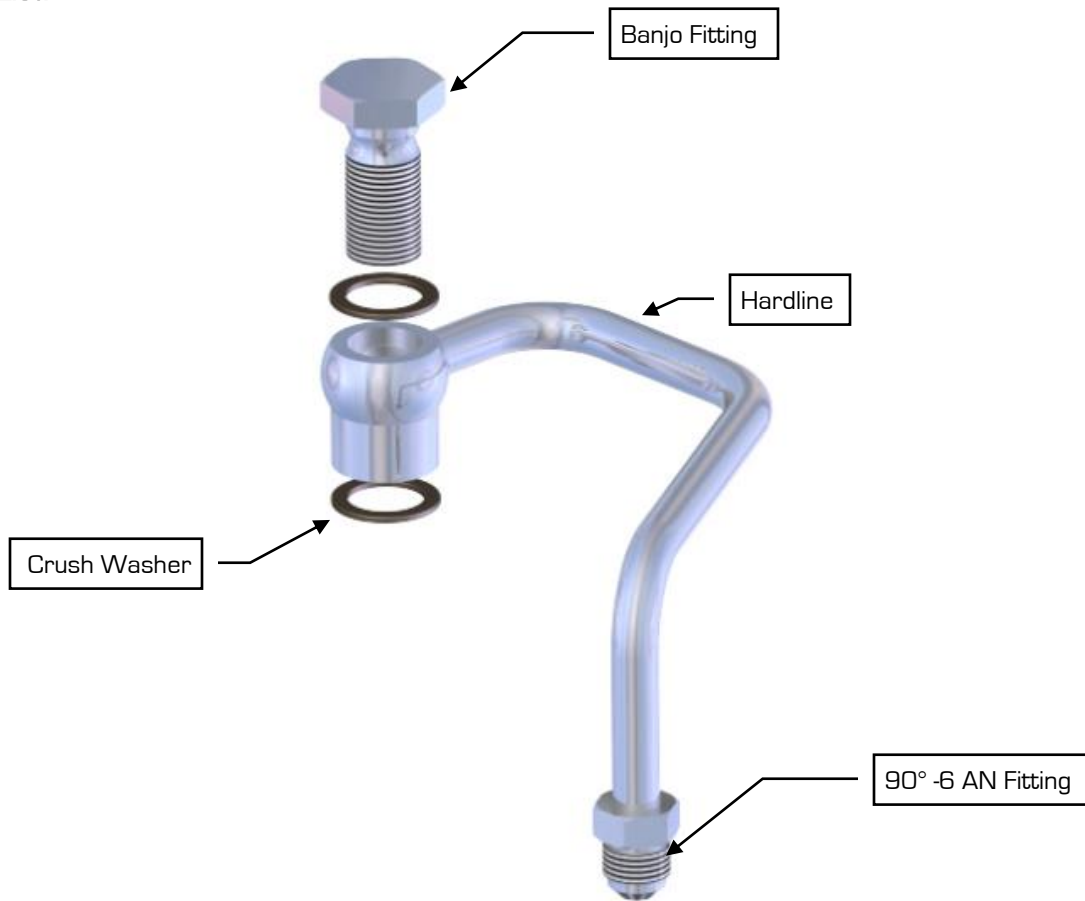


Detroit Speed
-6 AN "Hardline Pressure Tube" with Banjo Bolt Connector
P/N: 091702DS

Detroit Speed's Hardline Pressure Tube is specifically designed to route neatly around the DSE power steering pump with integral reservoir. It features a banjo fitting attachment to the pressure port of the pump and hard tubing that routes around the reservoir with a -6 AN fitting.

Parts List:



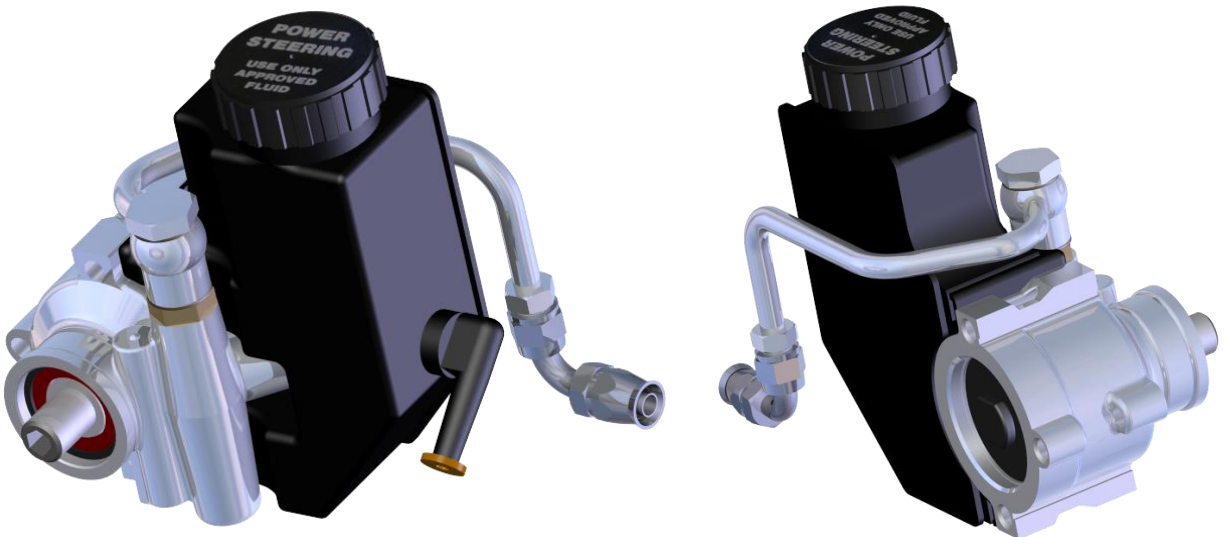
Supplementary Part:

A 90° -6 AN fitting with a compression attachment for the power steering hose can be used to connect the Hardline to the braided power steering hose.



Installation Instructions:

1. Screw the Banjo fitting into the pressure port of the pump (refer to figure below).
2. Position the Hardline to route behind the reservoir.
3. Torque the banjo fitting to 25-30 ft/lbs.



If you have any questions before or during the installation of this product, please contact Detroit Speed at tech@detroitsspeed.com or 704.662.3272

Legal Disclaimer: Detroit Speed is not liable for personal, property, legal, or financial damages from the use or misuse of any product we sell. The purchaser is solely responsible for the safety and performance of these products. No warranty is expressed or implied.