

Thank you for choosing this Drake Muscle Cars product for your vehicle. Please read these instructions carefully. Make sure you have the correct parts and proper tools before attempting installation.

KIT COMPONENTS		
Item	Description	Qty
A	Center Pin - Stainless	2
B	1/2-20 Nut - Stainless	4
C	Washer - AN 13.2 ID x 22 OD - Stainless	2
D	Billet Aluminum Hood Pin Plate	2
E	Hood Pin Plate Pad	2
F	Snap Ring Pin - Stainless w/ Lanyard Cable	2
G	Hood Pin Slide Bushing	2
H	M3.9 x 13 Stainless Screw	10

WARNING!

READ THESE INSTRUCTIONS COMPLETELY BEFORE BEGINNING INSTALLATION. Make sure you have all of the parts and required tools. If any part of this installation seems beyond your level of installation experience, please seek the help of a professional. Always wear gloves and protective eye-wear when working on your vehicle.

TOOLS REQUIRED FOR INSTALLATION

- Small Slotted Screwdriver
- Small Phillips Head Screwdriver
- Rotary tool and/or Diagonal cutters
- 1/2" Drill Bit
- 3/4" Wrench
- Ratchet Extension
- Stepped Drill Bit
- Large Slotted Screwdriver
- Drill
- 1/8" Drill Bit
- Ratchet
- 3/4" socket
- 10mm socket
- Blue painters tape

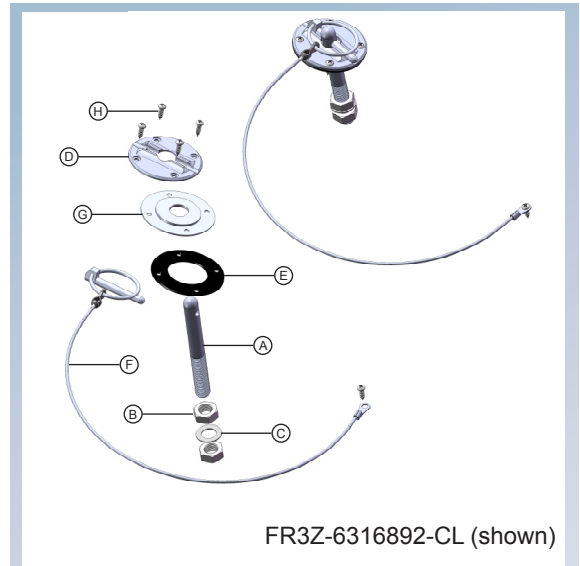
NOTE: Installation in the location shown in these instructions will require the relocation or removal of the factory hood prop on the passenger side. We recommend installing a hood lift system like the Drake Muscle Cars AlumaLift P/N FR3Z-16796/7-BL.

Installation

1. Open the hood. Using a small slotted screwdriver unfasten the (6) plastic pins securing the plastic radiator cover panel. (PIC 1) Then remove the panel and set it aside.

2. Using a large slotted screw driver loosen the clamp securing the air intake housing to the air intake tube. (PIC 2) Then disconnect the wiring harness from the MAF sensor. (PIC 3)

4. Then using a ratchet and 10mm socket unbolt the air filter housing from the fender. Remove the air filter housing and set it aside.



PIC 1



PIC 2



PIC 3

5. Cover the open intake tube with a clean rag or tape it closed to prevent debris from entering the engine.

6. Using a drill and 1/2" drill bit, enlarge the existing holes in locations (A) and (B) of the upper radiator support. (PIC 4 and PIC 5) Then temporarily reinstall the radiator cover panel and secure with the remaining push pins. Using the drill and 1/2" drill bit enlarge the holes in location (A) and (B) in the radiator cover panel.

7. Remove the radiator cover panel. Using a rotary tool or diagonal cutters clean up the newly drilled holes in the radiator support and radiator cover panel. (PIC 6) There is plastic material underneath the hood pin mounting locations of the metal radiator support that needs to be trimmed away. Make sure there is no excess material left that will interfere with the hood pins seating properly.

Upper Nut Starting Position

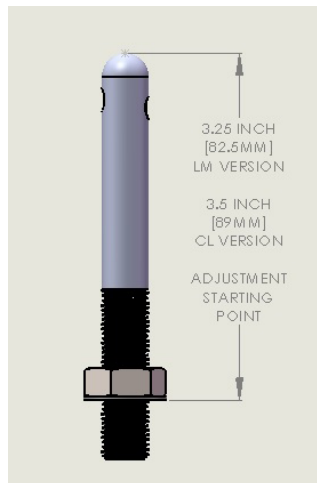


Illustration not to scale.

8. Temporarily install the radiator cover panel. Then thread the upper 1/2-20 nut (B) onto the new hood pins (A). (see illustration)

FR3Z-6316892-LM - Position the nut so that the bottom of the nut is **3.25"** from the top of the hood pin.

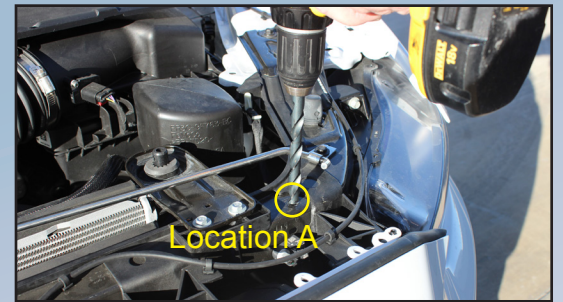
FR3Z-6316892-CL - Position the nut so that the bottom of the nut is **3.50"** from the top of the hood pin.

9. Install the included washers (C) below the 1/2-20 nut on to the hood pins and then insert the hood pins into the newly drilled holes in positions (A) and (B). (PIC 7) Then from underneath the radiator support, thread on the lower nut (B) to make sure there is enough clearance to securely tighten it. If the lower nut does not seat properly it will be necessary to remove more plastic material from under the radiator support.

10. Using a 3/4" wrench and socket securely tighten the hood pins in place making sure that the nuts are seated flush.

11. Using a marker, coat the tip of the hood pins (A) then slowly lower the hood till it makes contact with the pins. This will mark the location where the center of the holes should be in the hood. You can also put some modeling clay on the underside of the hood in the area where the pins will meet. Then lower the hood so the pins make an impression in the clay.

12. Using a drill and 1/8" drill bit, carefully drill a pilot hole on the underside of the hood where the hood pin marks or impressions are. (PIC 8) Drill through both layers of the hood.



PIC 4



PIC 5



PIC 6



PIC 7



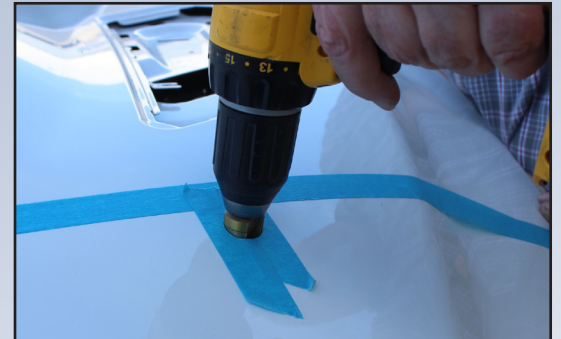
PIC 8

13. Place a wooden block on the radiator cover panel for the hood to rest on. (PIC 9) Make sure the block is stable and thick enough so there is plenty of clearance for the drill to penetrate without making contact with the hood pins. Lower the hood onto the block and lay blue painters tape on the painted hood surface where you will be drilling. This will help prevent the paint from chipping.



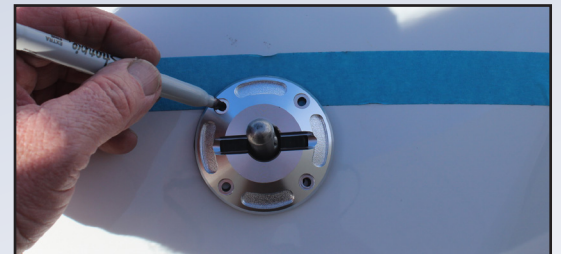
PIC 9

14. Using a drill and a step drill bit, carefully enlarge the pilot hole on the top side of the hood. (PIC 10) **Do not rush - go up one size at a time.** Raise the hood and enlarge to pilot hole from the bottom side of the hood as needed. Check the hole location often by lowering the hood to see where the hood pin is located in relation to the drilled holes. The hole location can be altered by angling the step drill bit if needed. Make sure the hood pin stays centered in the hole. The final size of the hole should be 7/8" (22mm). The hood pin plate will allow the hole to be oversized to approximately 1" if needed to allow the hood pin to project through the hood surface. After the holes have been drilled, remove the wood block and close the hood.



PIC 10

15. Starting on one side, position the hood pin plate pad (E), slide bushing (G) and billet aluminum plate (D) over the installed hood pin and newly drilled hole. Lay down blue painters tape, across the hood so it intersects the middle of the desired mounting screw location. Use a tape measure to make sure both sides are in identical positions.



PIC 11

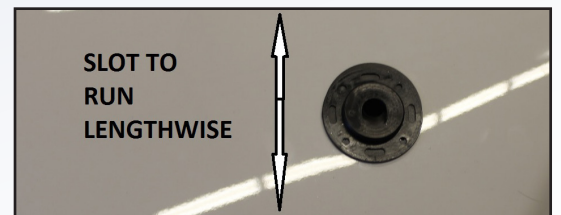
16. Line up the hood pin plate to the painters tape and mark the desired locations for the billet aluminum plate mounting holes with a marker. (PIC 11) Repeat on the other side then remove the billet aluminum plates, slide bushings and plate pads.



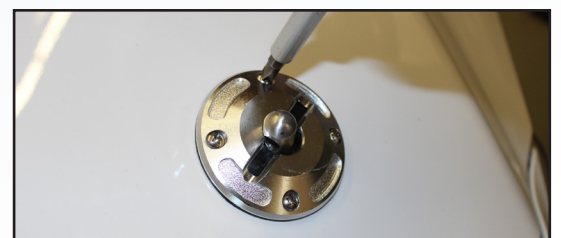
PIC 12

17. Using a drill and a #31 (.120 or 3mm) drill bit, drill the marked mounting holes. (PIC 12)

18. With the mounting holes drilled, position the hood pin plate pad (E), slide bushing (G) and billet aluminum plate (D). The slide bushing (G) has an oval hole the should be positioned lengthwise on the hood (PIC 13). Position the billet aluminum plate (D) so that narrow channel runs side to side on the hood. Fasten (E), (G) and (D) in place on the hood using the supplied sheet metal screws (H). (PIC 14)



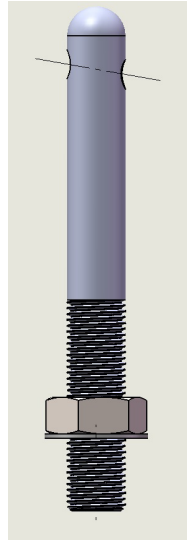
PIC 13



PIC 14

19. Carefully close the hood to pin height. The hole through the hood pins are drilled at a 10 degree angle to match the curve of the hood. The holes should be angled up toward the center of the hood. Adjust the height of the pins to properly align with the aluminum plates so there is slight pressure applied to the hood. Use the snap rings or a small diameter screw driver to hold the pins in position while tightening the nuts.

Hood Pin Hole Angle



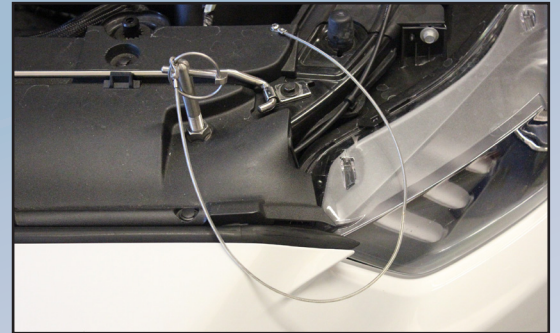
20. Secure the lanyards attached to the snap ring pin to the radiator cover panel using the supplied sheet metal screws (H). (PIC 15)

21. Reinstall the air filter housing and secure it in place with a 10 mm socket.

22. Re-attach the air inlet tube and tighten with a slotted screw driver. Reconnect the wiring harness to the MAF sensor.

21. Double check everything. Make sure you have properly reinstalled the radiator cover panel and that the hood pin nuts are tight. Close the hood and install the snap ring pins into the hood pins.

22. Congratulations! You've finished the installation. Enjoy your new Drake Muscle Car hood pins.



PIC 15



PIC 16



Also available from Drake Muscle Cars
Speed Mesh Hood Vents for 2015+ Mustang GT



FR3Z-16C630-M



FR3Z-16A052-BL

550R Aluminum Strut Tower Brace

Drake Muscle Cars

130 Cassia Way, Henderson, NV 89014
Tel: (702) 853-2060 www.DrakeMuscleCars.com