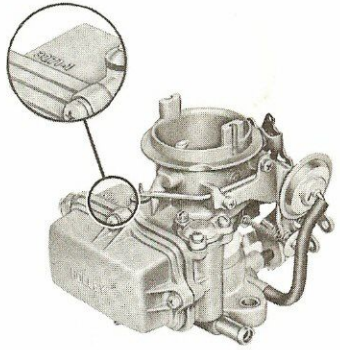
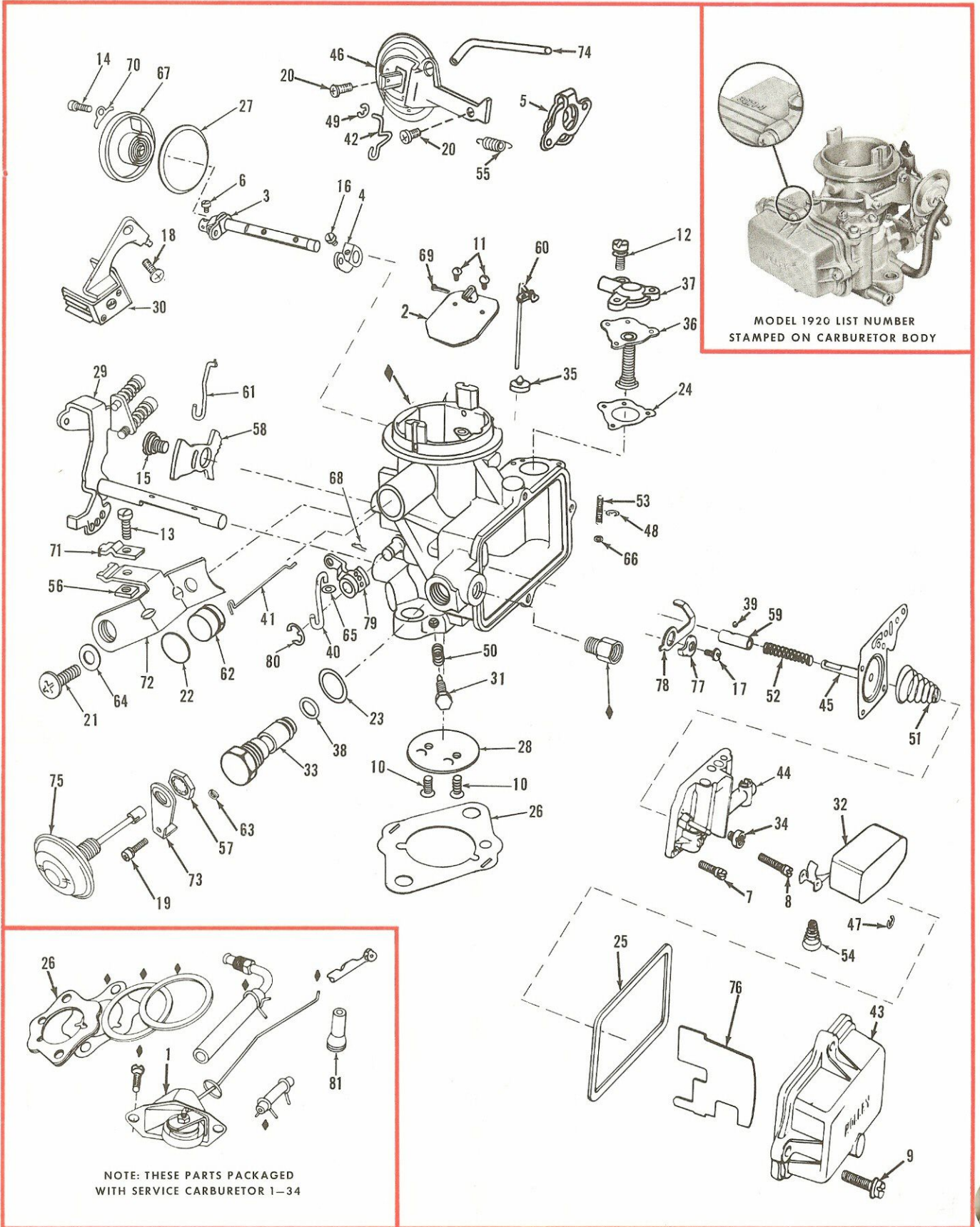


# TYPICAL VIEW ILLUSTRATION NO. 29-2



NOTE: THESE PARTS PACKAGED WITH SERVICE CARBURETOR 1-34

See Service Parts List for items not illustrated here.

Parts having ♦ designation are not available for service.



Refer to Numerical Listing Section for Variable Parts

Index Number	Letter	Part Name	Part Number or Reference Section	Index Number	Letter	Part Name	Part Number or Reference Section
1	L	Automatic Choke Assembly	X	41	L	Choke Piston Link	33R-444
2	L	Choke Plate Assembly	X	42	L	Choke Diaphragm Link	X
3	L	Choke Shaft & Lever Assy.	X	43	L	Float Bowl	34R-3382
4	L	Choke Lever	4R-801	44	L	Main Well & Econ. Body & Plugs Assy.	X
5	L	Choke Control Lever	X	45	L-M-P	Pump Diaphragm & Rod Assy.	X
6	L	Choke Control Lev. Swivel Scr.	5R-167	46	L	Choke Diaphragm Assy.-Complete	X
7	L	Main Well & Economizer Body Scr. & L. W. (Short)	5R-420	47	L-M	Float Spring Retainer	36R-169
8	L	Main Well & Economizer Body Scr. & L. W. (Long)	5R-421	48	L-M	Mechanical Vent Spring Retainer	36R-169
9	L	Fuel Bowl Scr & L. W.	5R-425	49	L-M	Choke Diaphragm Link Retainer	36R-456
10	L-M	Throt. Plate Scr. & L. W.	X	50	L	Idle Adjusting Needle Spring	38R-108
11	L-M	Choke Plate Scr. & L. W.	5R-476	51	L	Pump Return Spring	X
12	L	Econ. Body Scr. & L. W.	5R-641	52	L	Pump Operating Spring	X
13	L	Wire Clamp Scr. & L. W.	5R-641	53	L	Mechanical Vent Spring	X
14	L	Therm. Cover Clamp Scr. & L. W.	5R-641	54	L	Float Spring	X
15	L	Fast Idle Cam Screw	5R-797	55	L	Choke Lever Spring	X
16	L	Choke Lever Screw	5R-849	56	L	Wire Clamp Screw Nut	39R-1
17	L	Mechanical Vent Scr. & L. W.	5R-850	57	L	Dashpot Nut	39R-193
18	L	Throt. Adapter Scr. & L. W.	5R-892	58	L	Fast Idle Cam	X
19	L	Dashpot Bracket Screw	5R-893	59	L	Pump Push Rod Sleeve	42R-200
20	L	Choke Brkt. Retainer Screw	5R-943	60	L	Mechanical Vent Rod	X
21	L	Wire Bracket Screw	5R-1037	61	L	Fast Idle Rod	X
22	L	Choke Piston Plug	7R-218	62	L	Choke Piston Assy.	X
23	G-M-P	Fuel Inlet Seat Gasket	A & X	63	L	Dashpot Bracket Lock Washer	46R-2
24	G-M-P	Economizer Body Gasket	A & X	64	L	Wire Brkt. Scr. L. W.	46R-3
25	G-M-P	Float Bowl Gasket	A & X	65	L	Pump Operating Link Washer	X
26	G-L-M-P	Flange Gasket	8R-952	66	L	Mechanical Vent Spring Washer	X
27	G-M-P	Therm. Housing Gasket	X	67	L	Choke Therm. & Cap Assy.	47R-221A
28	L	Throttle Plate	X	68	L-M	Pump Operating Link Retainer	48R-31
29	L	Throt. Lever & Shaft Assy.	X	69	L-M	Choke Piston Link Retainer Pin	48R-183
30	L	Throt. Lever Drive Assy.	11R-1029A	70	L	Choke Therm. Cover Clamp	49R-128
31	L-M	Idle Adjusting Needle	X	71	L	Wire Clamp	49R-149
32	L	Float & Lever Assy.	X	72	L	Wire Bracket	49R-626
33	L-M-P	Fuel Inlet Needle & Seat Assy.	X	73	L	Dashpot Bracket	49R-750
34	L	Main Jet	X	74	L	Choke Vacuum Hose	52R-88
35	G-L-M-P	Mechanical Vent Valve	X	75	L	Dashpot Assembly	11-50
36	L-M-P	Economizer Stem Assembly	X	76	L	Fuel Inlet Baffle Assy.	59R-65A
37	L	Economizer Body Cover Assy.	25R-167A	77	L	Mechanical Vent Control Lever	63R-518
38	G-L-M	Fuel Inlet Seat "O" Ring Seal	27R-229	78	L	Mechanical Vent Operating Lever	63R-537
39	L-M	Diaphragm Push Rod Sleeve Ball	28R-94	79	L	Pump Operating Lever	X
40	L-M	Pump Operating Link	X	80	L-M	Pump Operating Lever Retainer	75R-37
				81	L	Throttle Lever Bushing	13R-762

NOTE: "X" Symbol Indicates "Refer to Numerical Listing Section for Specific Part Required"  
 G = Gasket Kit; L = Loose Parts; M = Master Kit; P = Pep Kit