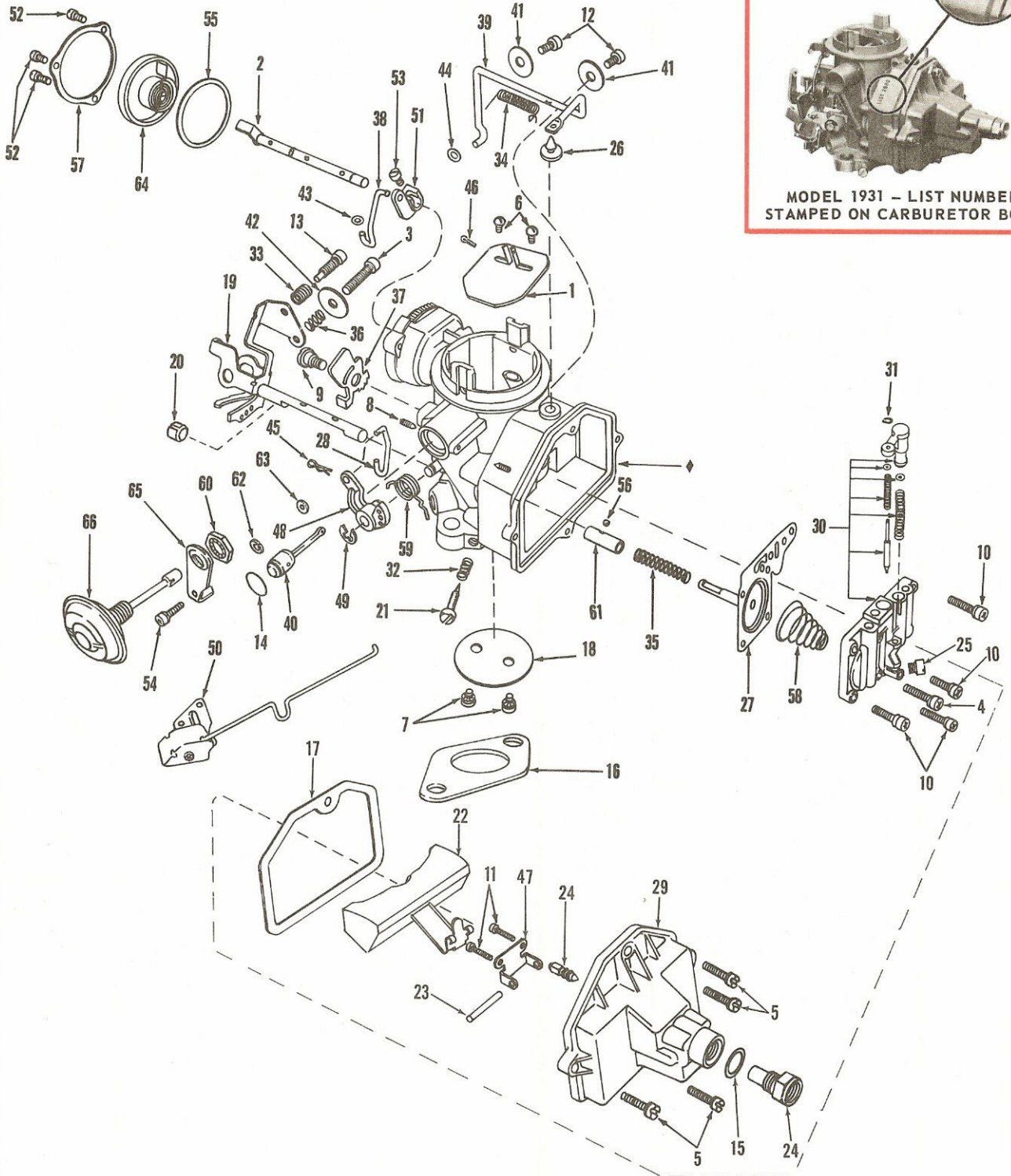


TYPICAL VIEW ILLUSTRATION NO. 19-2



MODEL 1931 - LIST NUMBER
STAMPED ON CARBURETOR BODY

See Service Parts List for items not illustrated here.

Parts having ♦ designation are not available for service.



Refer to Numerical Listing Section for Variable Parts

Index Number	Letter	Part Name	Part Number or Reference Section	Index Number	Letter	Part Name	Part Number or Reference Section
1	L	Choke Plate Assembly	X	34	L	Mechanical Vent Spring	X
2	L	Choke Shaft Assembly	X	35	L	Pump Drive Spring	X
3	L	Throttle Stop Screw	X	36	L	Throttle Stop Screw Spring	X
4	L	Metering Block Scr. & L. W.	5R-421	37	L	Fast Idle Cam	X
5	L	Float Bowl Scr. & L. W.	5R-425	38	M-L	Fast Idle Rod	43R-357
6	L-M	Choke Plate Screw & L. W.	5R-476	39	L	Mechanical Vent Rod	X
7	L-M	Throttle Plate Scr. & L. W.	5R-476	40	L	Choke Piston & Link Assembly	X
8	L	Choke Piston Adjusting Screw	5R-775	41	L	Mechanical Vent Rod Ret. Washer	46R-692
9	L	Fast Idle Cam Screw	5R-797	42	L	Vent Rod Operating Washer	46R-839
10	L	Metering Block Scr. & L. W.	5R-1004	43	L	Fast Idle Rod Washer	46R-763
11	L	Float Shaft Brkt. Scr. & L. W.	5R-1016	44	L	Mechanical Vent Spring Washer	X
12	L	Vent Rod Retainer Screw	5R-1035	45	L-M	Pump Link Retainer	48R-31
13	L	Throttle Adjusting Screw	X	46	L-M	Choke Piston Link Cotter Pin	48R-183
14	L-M	Choke Piston Plug	7R-218	47	L	Float Shaft Retaining Bracket	59R-70
15	G-M-P	Fuel Inlet Seat Gasket	X	48	L	Pump Operating Lever	X
16	G-L-M-P	Flange Gasket	8R-1344	49	L-M	Pump Operating Lever Retainer	75R-37
17	G-M-P	Fuel Bowl Gasket	X	50	L	Choke Thermostat Hsg. Assy.	X
18	L	Throttle Plate	*9R-184	51	L	Choke Lever	4R-801
19	L	Throttle Lever & Shaft Assembly	X	52	L	Choke Therm. Cov. Retainer Scr.	5R-641
20	L	Throttle Shaft Bearing	13R-885	53	L	Choke Lever Screw	5R-849
21	L-M	Idle Adjusting Needle	15R-72	54	L	Dashpot Bracket Screw	5R-1037
22	L	Float & Hinge Assembly	16R-393A	55	G-M-P	Thermostat Housing Gasket	X
23	L	Float Shaft	17R-41	56	L	Pump Push Rod Sleeve Ball	28R-94
24	L-M-P	Fuel Inlet Needle & Seat Assy.	6-21	57	L	Thermostat Cover Retainer	36R-515
25	L	Main Jet	X	58	L	Pump Operating Spring	38R-946
26	G-M-P-L	Mechanical Vent Valve	23R-453	59	L	Throttle Return Spring	38R-1225
27	L-M-P	Pump Diaphragm Assy.-Complete	X	60	L	Dashpot Nut	39R-193
28	L	Pump Operating Link	X	61	L	Pump Push Rod Sleeve	42R-200
29	L	Float Bowl	34R-4115	62	L	Dashpot Bracket Lock Washer	46R-3
30	L	Metering Block & Plugs Assy.	X	63	L	Pump Operating Link Washer	46R-445
31	L	Power Valve Retainer	36R-225	64	L	Thermostat & Cover Assy.	X
32	L	Idle Adjusting Needle Spring	38R-108	65	L	Dashpot Bracket	49R-754
33	L	Fast Idle Screw Spring	X	66	L	Dashpot Assembly	11-4

NOTE: "X" Symbol Indicates "Refer to Numerical Listing Section for Specific Part Required"

G = Gasket Kit; L = Loose Parts; M = Master Kit; P = Pep Kit

*For R3706A & R-3709A refer to the numerical listing for the correct part