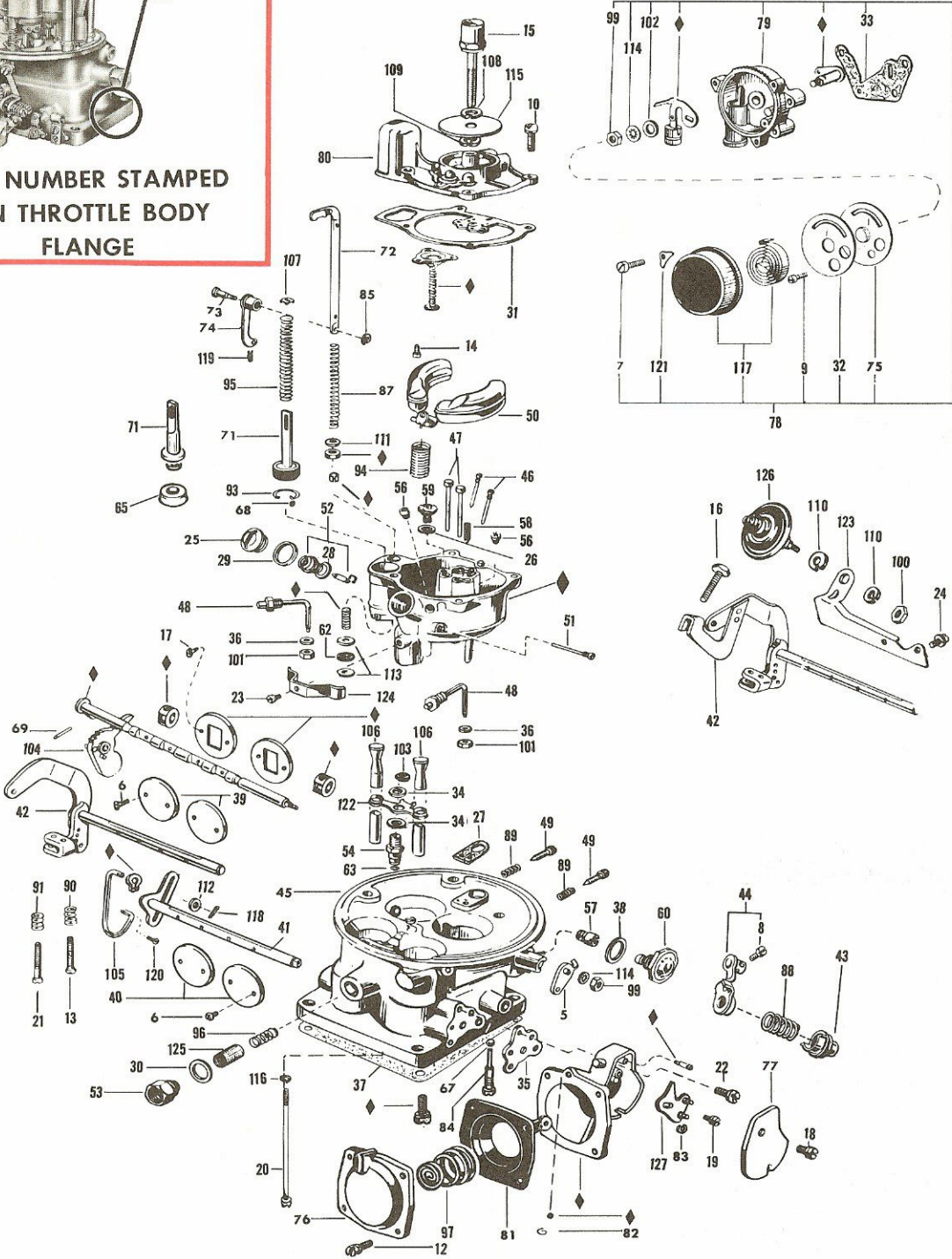


LIST NUMBER STAMPED
ON THROTTLE BODY
FLANGE



Parts having ♦ designation are not available for service

Refer to Numerical Listing Section for Variable Parts

Index Number	Letter	Part Name	Part Number or Reference Section	Index Number	Letter	Part Name	Part Number or Reference Section
5	L	Choke Lever	4R-384	67	L-M	Distributor Check Ball	28R-31
6	L-M	Throt.Plate Screw -Primary & Sec.	5R-4	68	L-M	Pump Check Ball	28R-94
7	L	Thermostat Housing Screw	5R-16	69	L	Fast Idle Cam Retainer	29R-285
8	L	Hand Throttle Lever Screw	5R-167	71	L-M-P	Accelerating Pump Piston Assy.	X
9	L	Choke Housing Plate Screw	5R-167	72	L	Pump Operating Rod Assy.	X
10	L	Main Body Cover Screw & L.W.	5R-333	73	L	Pump Link Pin or Stud	X
12	L	Diaphragm Cover Screw & L.W.	5R-641	74	L-M	Pump Link Assy.	33R-242A
13	L	Choke Stop Screw	5R-372	75	L	Choke Housing Plate	34R-722
14	L	Economizer Diaph. Screw & L.W.	5R-375	76	L	Diaphragm Cover	34R-1011
15	L	Air Cleaner Anchor Screw	5R-427	77	L	Diaphragm Housing Cover	34R-1012
16	L	Dashpot Adjusting Screw	5R-447	78	L	Choke Housing Assy. (Comp.)	34R-1078A
17	L	Choke Plate Screw & L.W.	5R-474	79	L	Choke Housing & Plugs Assy.	34R-1079A
18	L	Diaph. Housing Cover Scr. & L.W.	5R-476	80	L	Main Body Cover & Plugs Assy.	X
19	L	Diaph. Lever Assy.Scr. & L.W.	5R-476	81	L-M	Diaphragm Assy.	35R-136A
20	L	Throttle Body Screw (Long)	5R-480	82	L	Diaphragm Ball Retainer	36R-162
21	L	Throttle Stop Screw	5R-496	83	L-M	Diaphragm Link Retainer	36R-164
22	L	Diaph.Housing Assy.Scr. & L.W.	5R-508	84	L	Distributor Check Ball Retainer	36R-165
23	L	Secondary Tube Bracket Screw	5R-1033	85	L-M	Pump Link Pin Retainer	36R-169
24	L	Dashpot Bracket Screw & L.W.	5R-523	87	L	Accelerating Pump Spring	38R-1
25	L	Fuel Valve Seat Plug	7R-113	88	L	Hand Throttle Lever Spring	38R-9
26	G-M-P	Power Jet Valve Gasket	X	89	L	Idle Adjusting Needle Spring	38R-108
27	G-M-P	Main Body to Throt. Body Gasket	X	90	L	Choke Stop Screw Spring	38R-110
28	G-M	Fuel Inlet Valve Seat Gasket	X	91	L	Throttle Stop Screw Spring	38R-110
29	G-M-P	Fuel Valve Seat Plug Gasket	X	93	L-M	Pump Check Ball Retainer Sprg.	38R-236
30	G-M-P	Fuel Inlet Fitting Gasket	X	94	L-M	Float Spring	38R-332
31	G-M-P	Main Body Cover Gasket	X	95	L	Accelerating Pump Return Sprg.	38R-339
32	G-M-P	Thermostat Housing Gasket	X	96	L	Filter Screen Retainer Spring	38R-342
33	G-M-P	Choke Housing Gasket	X	97	L	Diaphragm Spring	38R-464
34	G-M-P	Fuel Inlet Conn. Fitting Gskt.	X	99	L	Choke Shaft Nut	39R-5
35	G-M-P	Diaphragm Housing Gasket	X	100	L	Dashpot Lock Nut	39R-106
36	G-M-P	Secondary Jet Gasket	X	101	L	Secondary Jet Head Tube Nut	39R-123
37	G-L-M-P	Flange Gasket	8R-634	102	L	Choke Thermostat Lever Spacer	40R-108
38	G-M-P	Spark Valve Body Gasket	X	103	L	Main Body to Throt. Body Spacer	40R-293
39	L	Throttle Plate - Primary	9R-49	104	L	Fast Idle Cam Assy.	41R-98A
40	L	Throttle Plate - Secondary	9R-80	105	L	Sec.Throt. Connecting Rod	X
41	L	Throttle Shaft Assy. - Secondary	10R-584A	106	L	Secondary Venturi	45R-94
42	L	Throttle Lever & Shaft Assy.	X	107	L	Accelerating Pump Spg.Washer	46R-1
43	L	Hand Throttle Lever Collar	11R-19	108	L	Air Cleaner Anchor Scr. L.W.	46R-3
44	L	Hand Throttle Lever Assy.	11R-438A	109	L	Bleeder Screen Washer L.W.	46R-3
45	L	Throttle Body & Shaft Assy.	X	110	L	Dashpot Nut Lock Washer	46R-10
46	L-M	Idle Tube Assy.	X	111	L	Pump Operating Rod Lubricator W.	46R-11
47	L-M	Main Well Tube Assy.	14R-201A-31	112	L	Sec. Throt. Connecting Rod Washer	46R-25
48	L	Secondary Jet Assy.	14R-258A-55	113	L	Pump Operating Rod Seal Washer	46R-131
49	L-M	Idle Adjusting Needle	15R-36	114	L	Choke Shaft Nut L.W.	46R-248
50	L	Float & Hinge Assy.	16R-227A	115	L	Bleeder Screen Washer	46R-335
51	L-M	Float Shaft	17R-21	116	L	Throt. Body Screw L.W.	46R-367
52	L-M-P	Fuel Inlet Valve & Seat Assy.	6-12	118	L-M	Sec. Throt. Connecting Rod Retainer	48R-31
53	L	Fuel Inlet Fitting	19R-92	119	L-M	Pump Link Retainer	48R-117
54	L	Fuel Inlet Connection Fitting	19R-124	120	L-M	Sec. Throt.Cont. Rod Cotter Pin	48R-183
56	L	Main Jet	X	121	L	Thermostat Housing Clamp	49R-128
57	L	Spark Valve Restriction	X	122	L	Secondary Tube Bracket	49R-242
58	L-M	Pump Discharge Valve	23R-115	123	L	Dashpot Bracket	49R-283
59	L-M	Power Jet Valve Assy.	X	124	L	Secondary Venturi Clamp	49R-287
60	L-M	Spark Valve Assy.	25R-177A-25	125	L-M	Filter Screen & Retainer Assy.	57R-19A
62	G-L-M-P	Pump Rod Seal - Felt	27R-70	126	L	Dashpot Assembly	11-3
63	G-L-M-P	Fuel Inlet Connection Fitting Seal	27R-109	127	L	Diaphragm Lever Assembly	63R-249A
65	L-M-P	Accelerating Pump Piston Cup	X				

NOTE: "X" Symbol Indicates "Refer to Numerical Listing Section for Specific Part Required"

G = Gasket Kit; L = Loose Parts; M = Master Kit; P = Pep Kit