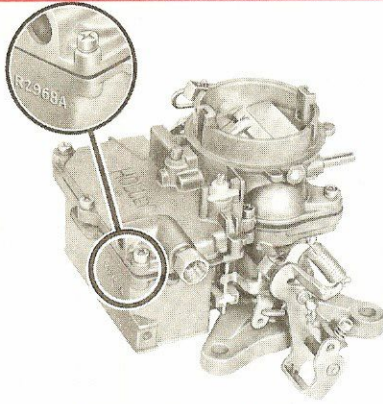
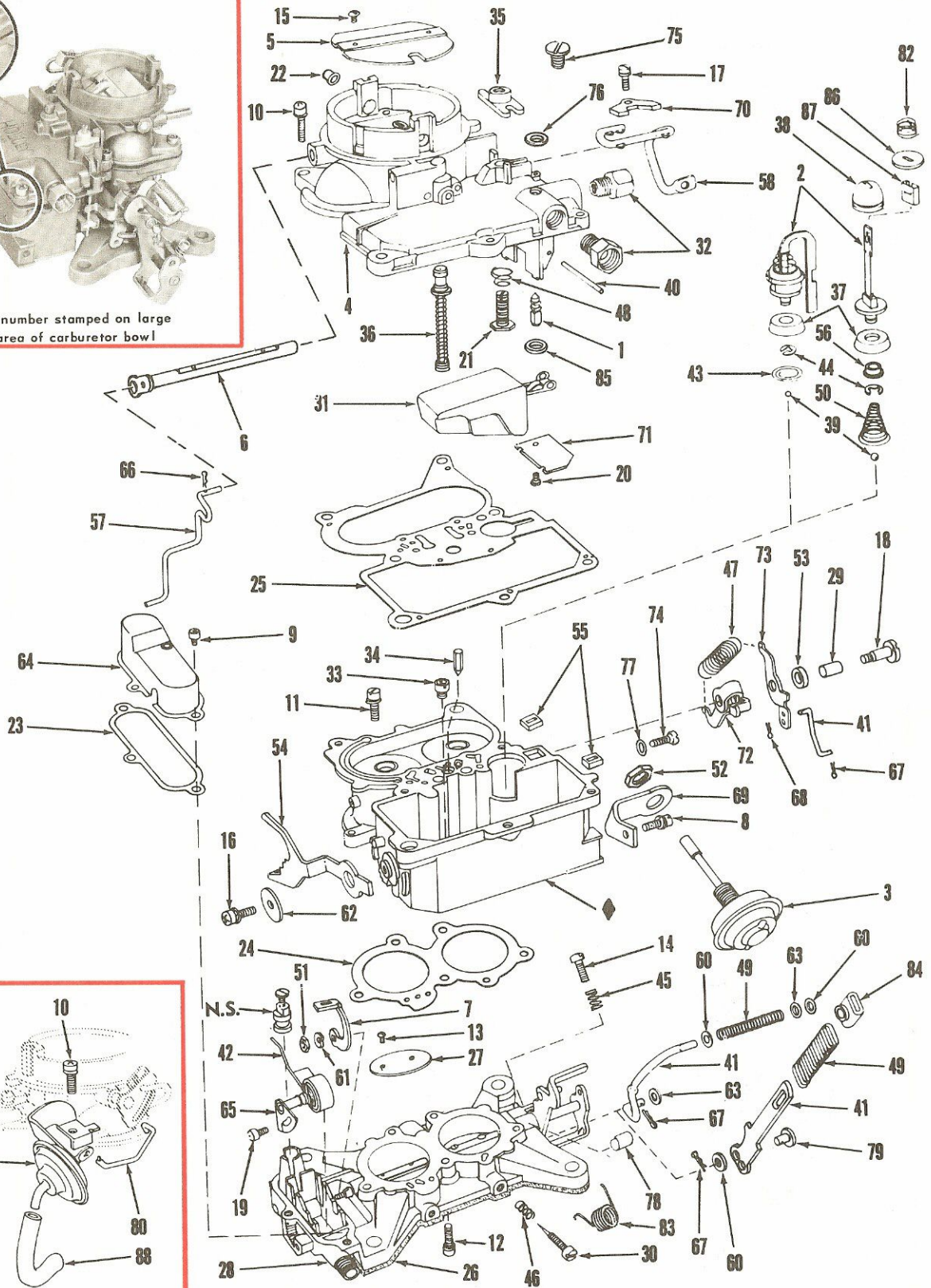


TYPICAL VIEW ILLUSTRATION NO. 23-2



Part number stamped on large flat area of carburetor bowl



See Service Parts List for items not illustrated here.

Parts having ♦ designation are not available for service.



Refer to Numerical Listing Section for Variable Parts

Index Number	Letter	Part Name	Part Number or Reference Section	Index Number	Letter	Part Name	Part Number or Reference Section
1	L-M-P	Fuel Inlet Needle	X	45	L	Throt. Stop Scr. Sprg.	38R-108
2	L	Accel. Pump	X	46	L	Idle Adj. Needle Sprg.	38R-108
3	L	Dashpot	X	47	L	Pump Oper. Sprg.	38R-1151
4	L	Airhorn & Plugs	X	48	L	Vent Valve Sprg.	38R-1199
5	L	Choke Plate	2R-399	49	L	Pump Drive Sprg.	X
6	L	Choke Shaft & Lev.	X	50	L	Pump Return Sprg.	X
7	L	Fast Idle & Dechoke Lev.	X	51	L	Fast Idle & Dechoke Lev. Nut	39R-11
8	L	Dashpot Brkt. Scr. & L.W.	5R-367				
9	L	Therm. Hsg. Cov. Scr.	5R-375	52	L	Dashpot Brkt. Scr. Nut	39R-193
10	L	Airhorn to Main Body Scr. & L.W.	5R-1231	53	L	Pump Oper. Spacer	40R-450
				54	L	Fast Idle Cam	X
11	L	Main Body to Throt. Body Scr. & L.W.	5R-425	55	L	Pump Rod Guide	42R-351
				56	L	Pump Cup Liner	42R-366
12	L	Throt. Body to Main Body & L.W.	5R-520	57	L	Choke Rod	43R-365
				58	L	Pump Rod	X
13	L-M	Throt. Plate Scr.	5R-808	59		Not Used	-----
14	L	Throt. Stop Scr.	5R-835	60	L	Pump Drive Sprg. Ret.	46R-283
15	L-M	Choke Plate Scr.	5R-837	61	L	Fast Idle & Dechoke Lev. Nut L.W.	46R-636
16	L	Fast Idle Cam Scr.	5R-872				
17	L	Pump Rod Clamp Scr.	5R-998	62	L	Fast Idle Cam Washer	46R-692
18	L	Pump Drive Lev. Scr.	5R-1024	63	L	Pump Link Washer	46R-937
19	L	Therm. Assy. Lock Scr.	5R-1035	64	L	Therm. Cover & Guide	47B-223A
20	L	Fuel Bowl Vaffle Scr.	5R-1067	65	L-M	Therm. & Choke Piston Link	X
21	L	Vent Valve Adj. Scr.	5R-1086				
22	L	Cap Plug	7R-456	66	L-M	Choke Rod Ret.	48R-31
23	G-M-P	Therm. Hsg. Gskt.	X	67	L-M	Pump Oper. Link Ret.	48R-31
24	G-M-P	Throt. Body Gskt.	X	68	L-M	Pump Oper. Link Cotter Pin	48R-183
25	G-M-P	Main Body Gskt.	X	69	L	Dashpot Brkt.	X
26	G-M-P-L	Flange Gasket	X	70	L	Pump Rod Clamp	49R-749
27	L	Throt. Plate	X	71	L	Fuel Bowl Baffle	59R-75
28	L	Throt. Body & Shaft	X	72	L	Pump Oper. Lev.	63R-694
29	L	Pump Drive Lev. Bush.	13R-892	73	L	Pump Drive Lev.	63R-695
30	L-M	Idle Adj. Needle	X	74	L	Scr.	5R-659
31	L	Float & Hinge	16R-346A-4	75	L	Fuel Level Check Plug	7R-225
32	L	Fuel Inlet Fitting	19R-295A	76	G-M-P	Fuel Level Check Plug Gskt.	X
33	L	Main Metering Jet	X	77	G-M-P	Gskt.	X
34	L-M	Pump Discharge Valve	23R-406	78	L	Throt. Shaft Bearing	X
35	L	Vent Valve	23R-470	79	L	Pump Link Pin	29R-1025
36	L	Power Valve Piston	25R-374A	80	L	Choke Diaph. Link	33R-494
37	L-M-P	Pump Cup	X	81	L	Choke Diaph.	35R-9-26
38	G-M-P	Pump Stem Seal	X	82	L	Vent Ret. Sprg.	38R-1290
39	L-M	Pump Inlet Valve	28R-94	83	L	Throt. Ret. Sprg.	38R-1298
40	L-M	Float Hinge Shaft	29R-814	84	L	Pump Link Guide	42R-385
41	L-M	Pump Oper. Link	X	85	L	Fuel Inlet Valve Ret.	46R-653
42	L	Choke Piston Link	33R-477	86	L	Vent Valve	46R-833
43	L	Pump Inlet Valve Ret.	36R-466	87	L	Vent Valve Locator	48R-72
44	L	Pump Piston Cup Ret.	36R-477	88	L	Choke Vac. Hose	X

NOTE: "X" Symbol Indicates "Refer to Numerical Listing Section for Specific Part Required"
G = Gasket Kit; L = Loose Parts; M = Master Kit; P = Pep Kit